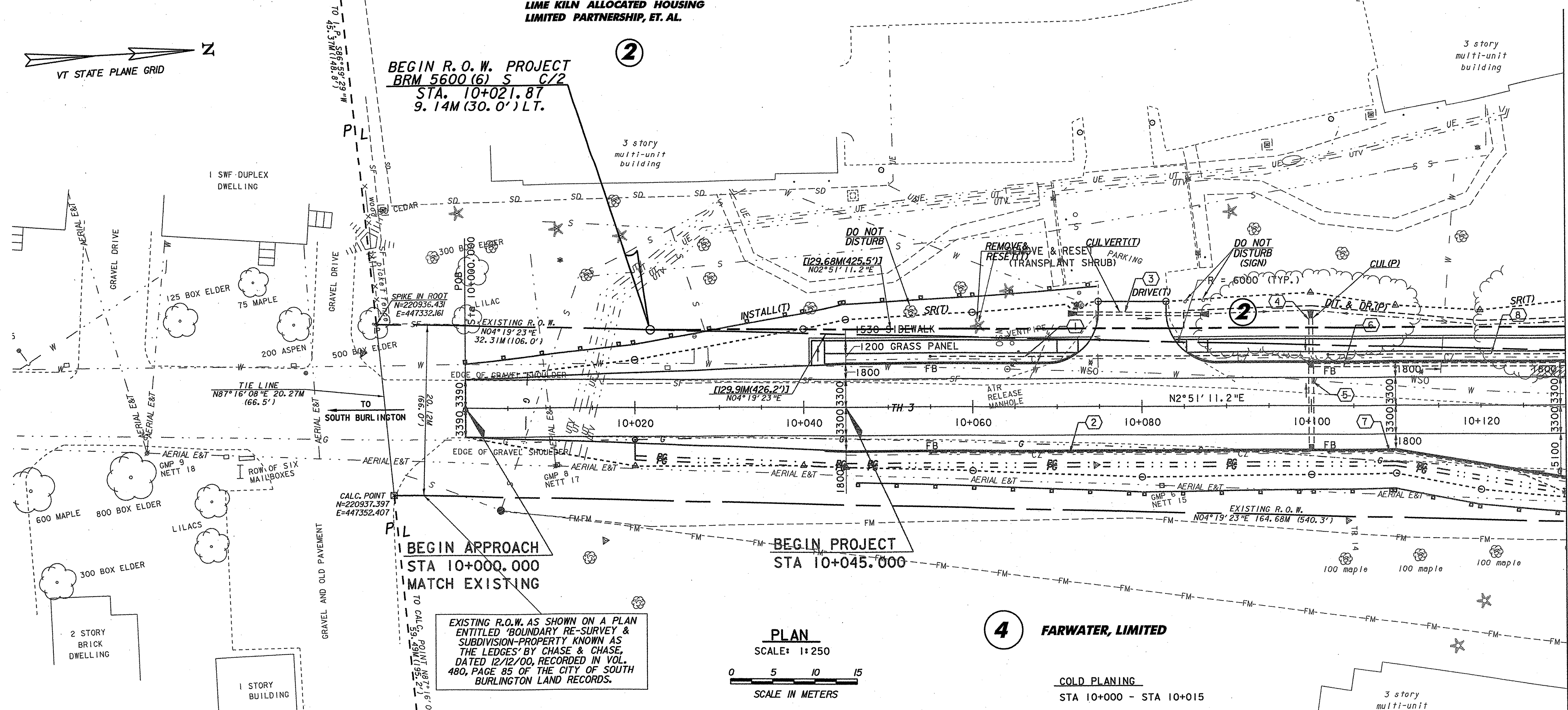


LIME KILN ALLOCATED HOUSING LIMITED PARTNERSHIP, ET. AL.

**BEGIN R.O.W. PROJECT
BRM 5600 (6) S C/2
STA. 10+021.87
9.14M (30.0') LT.**

2



**BEGIN APPROACH
STA 10+000.000
MATCH EXISTING**

**BEGIN PROJECT
STA 10+045.000**

EXISTING R.O.W. AS SHOWN ON A PLAN ENTITLED 'BOUNDARY RE-SURVEY & SUBDIVISION-PROPERTY KNOWN AS THE LEDGES' BY CHASE & CHASE, DATED 12/12/00, RECORDED IN VOL. 480, PAGE 85 OF THE CITY OF SOUTH BURLINGTON LAND RECORDS.

PLAN
SCALE: 1:250



4 FARWATER, LIMITED

**FOR R.O.W.
USE ONLY**

SEE DRAINAGE AND SEWER NOTES & DETAILS ON SHEETS 13 & 14 (R.O.W. SHEETS 5 & 6)

- COLD PLANING**
STA 10+000 - STA 10+015
- TRAVEL LANE TAPER**
STA 10+000, LT & RT 3390 TO STA 10+045, LT & RT 3300
- PAVED SHOULDER TAPER**
STA 10+000, LT & RT 0 TO STA 10+045, LT & RT 1800
- CONSTRUCT SIDEWALK**
STA 10+041.0 - STA 10+073.2, LT
STA 10+084.6 - STA 10+130.0, LT
- CONSTRUCT SIDEWALK RAMP, TYPE 1**
(SEE STD. C-3M)
STA 10+070.0 - STA 10+073.2, LT
STA 10+084.6 - STA 10+087.8, LT
- CONSTRUCT SIDEWALK RAMP, TYPE 6**
(SEE STD. C-3M)
STA 10+041.0 - STA 10+045.0, LT
- CONSTRUCT DRIVE**
STA 10+079, LT
50 BCP TYPE III, 7200 WIDE
- REMOVE EXISTING CURB**
STA 10+123 - 10+130, RT
- REMOVE AND RESET SHRUB**
STA 10+061, LT

- CONSTRUCTION NOTES**
- CONSTRUCT CONCRETE CURB**
STA 10+042.5 - STA 10+130.0, RT
STA 10+042.5 - STA 10+072.5, LT
STA 10+085.3 - STA 10+130.0, LT
- DURABLE 100 mm WHITE LINE**
STA 10+000 - STA 10+130, LT & RT
- DURABLE 100 mm YELLOW LINE (DOUBLE CENTER LINE)**
STA 10+000 - STA 10+130
- CONSTRUCT BUS PULLOUT**
STA 10+110, RT 5.1 m - STA 10+130, RT 8.4 m

- UT** --- EXISTING UNDERGROUND TELEPHONE LINE
- W** --- EXISTING UNDERGROUND WATER LINE
- G** --- EXISTING UNDERGROUND GAS LINE
- S** --- EXISTING UNDERGROUND SEWER LINE
- AERIAL E&T** --- EXISTING OVERHEAD ELECTRIC & TELEPHONE LINE
- FM** --- EXISTING FORCED MAIN SEWER LINE
- SD** --- EXISTING STORM DRAIN
- LEDDGE**
- HYD** ○ HYDRANT
- VALVE
- MANHOLE
- ⊕ MAILBOX
- ⊕ SIGNS
- ← UTILITY POLE GUY WIRE
- GAS SHUTOFF
- ⊕ LIGHT POLE
- P E&T** --- PROPOSED OVERHEAD ELECTRIC & TELEPHONE BY OTHERS
- PS** --- PROPOSED SEWER LINE
- PG** --- PROPOSED GAS LINE BY OTHERS
- PW** --- PROPOSED WATER LINE BY OTHERS
- PB PROPOSED PULL BOX BY OTHERS
- FB PROPOSED FLUSHING BASIN
- ▲---▲--- TOP OF CUT TO MATCH EXISTING
- TOE OF SLOPE TO MATCH EXISTING

- SIGN LEGEND**
- N = NEW
 - R = REMOVE
 - B-B = BACK-TO-BACK
 - RET = RETAIN
 - R & S = REMOVE AND RESET
 - R & N = REMOVE AND NEW
 - ⓪ RETURN TO CITY OF SO. BURLINGTON

LINES SHOWN ON THIS PLAN AS EXISTING PROPERTY LINES P/L ARE BELIEVED TO BE ACCURATE BUT SHOULD NOT BE RELIED UPON FOR PURPOSES UNRELATED TO THE CITY OF S. BURLINGTON'S ACQUISITION OF LAND AND RIGHTS FOR THIS PROJECT.

28-FEB-2005

**STATE OF VERMONT
AGENCY OF TRANSPORTATION**

Town Of COLCHESTER-SOUTH BURLINGTON	Bridge No. 6
Highway No. TH 4/3	Log Sta. Surv. Sta.
TH 4/3 OVER WINOOSKI RIVER & N.E.C.R.	

PLAN (1 OF 5)	
Designed By A.J. CRAWFORD	Drawn By C.S. MERCER
Checked By J.A. MERCER	Date 6/03
Bridge Design Supervisor S.M. GUNN	Date 6/03
PROJECT COLCHESTER-SOUTH BURLINGTON	PROJECT NO. BRM 5600 (6) S C/2
I.G.C. Info.	
R.O.W. SHEET 17 OF 21	SHEET 10 OF 124

DATUM
VERTICAL NAVD 88
HORIZONTAL NAD 83 (92)

VANASSE HANGEN BRUSTLIN, INC.