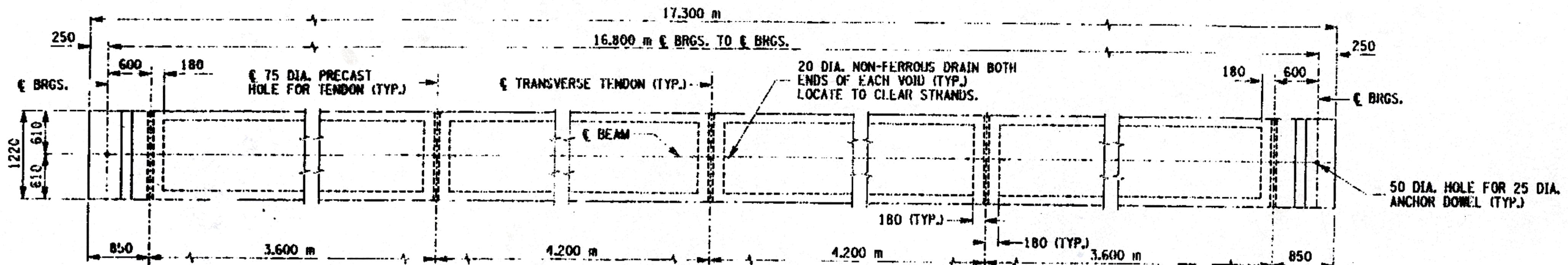
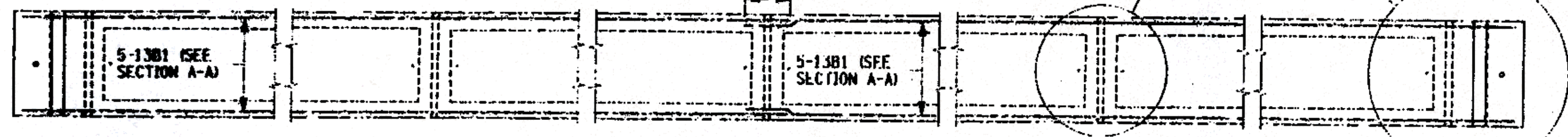


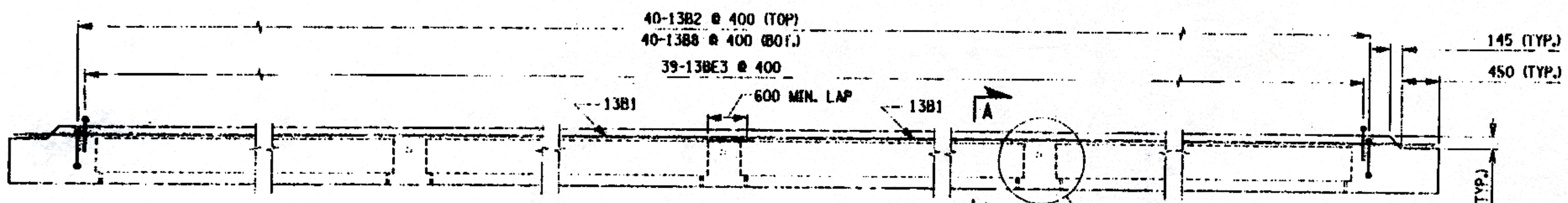
FED ROAD REG. NO.	STATE	CONTRACT NO.	SHEET NO.	TOTAL SHEETS
1	N.Y.		32	43
COUNTY ROAD 18 OVER POULTNEY RIVER				
WASHINGTON COUNTY, NY / RUTLAND COUNTY, VT				
TOWN OF HAMPTON, NY / POULTNEY, VT				
CAPITAL PROJECT IDENTIFICATION NO. 1753.76				



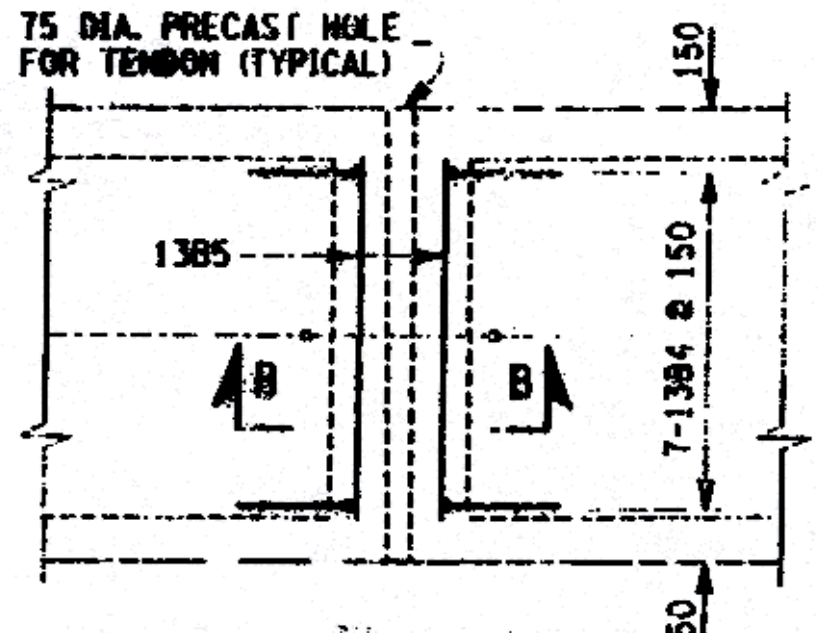
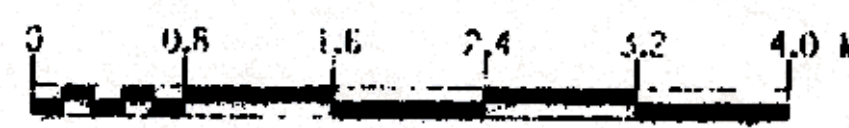
BOX BEAM PLAN



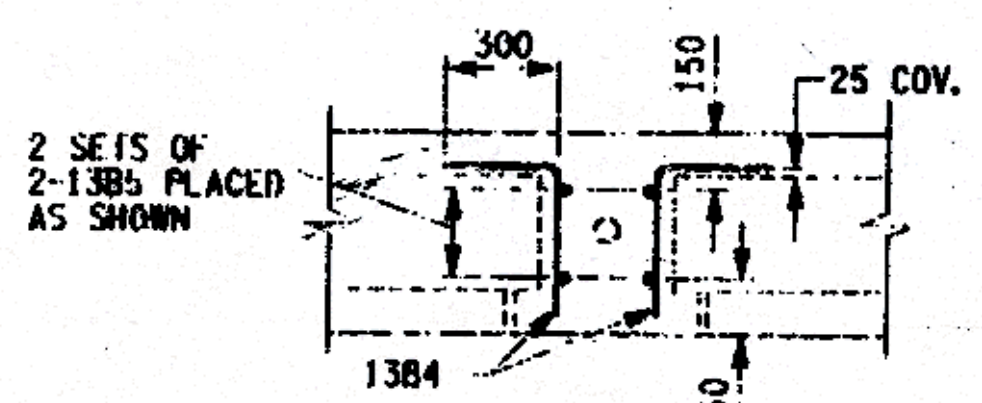
BOX BEAM REINFORCEMENT PLAN



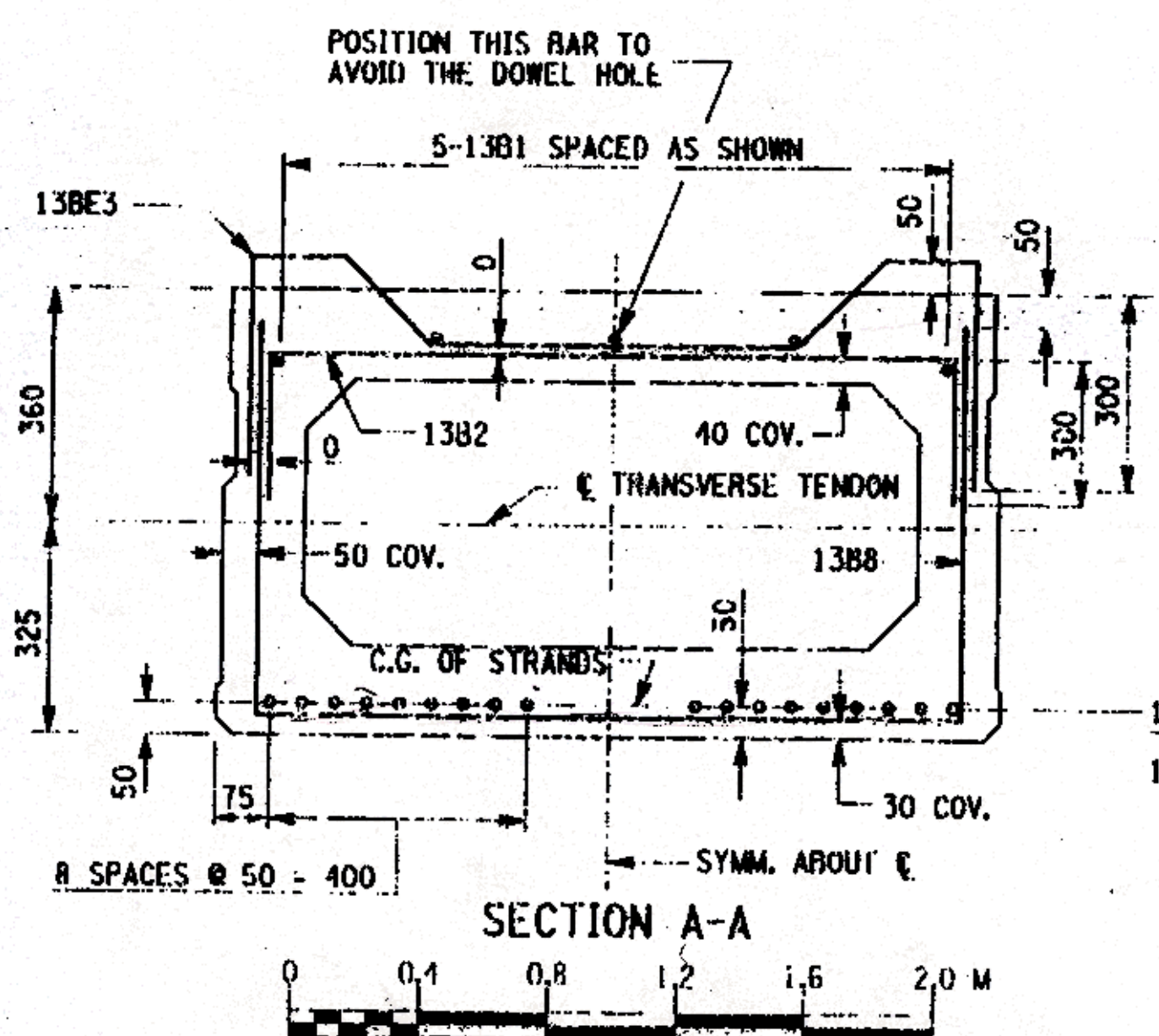
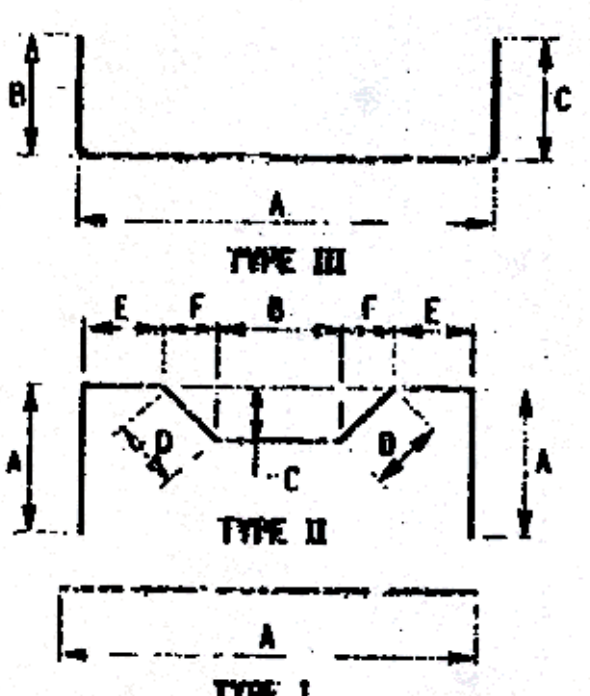
REINFORCEMENT ELEVATION



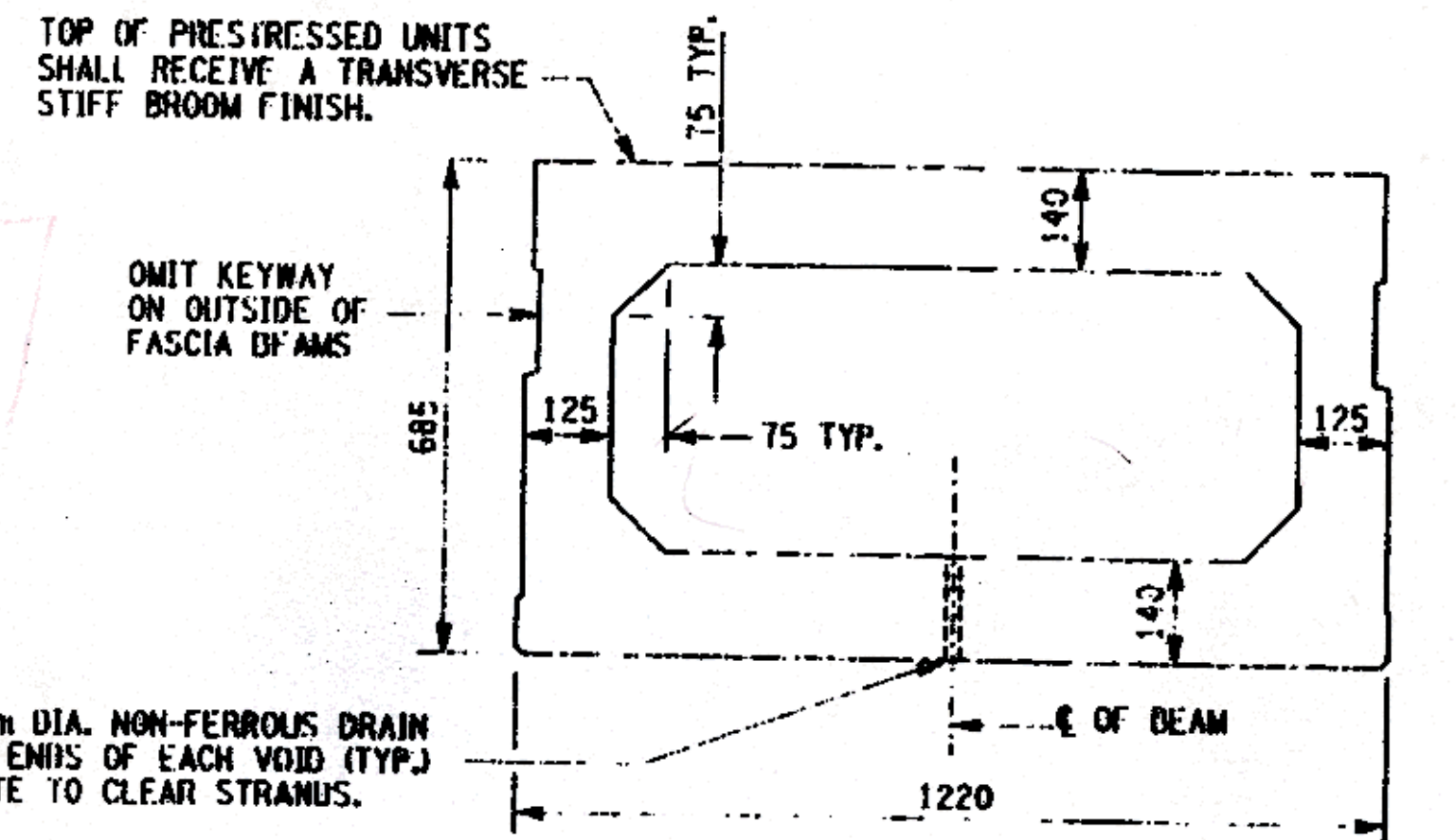
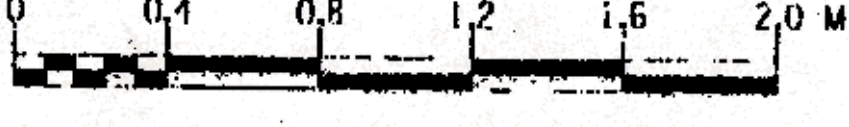
DIAPHRAGM REINFORCEMENT PLAN
NOT TO SCALE



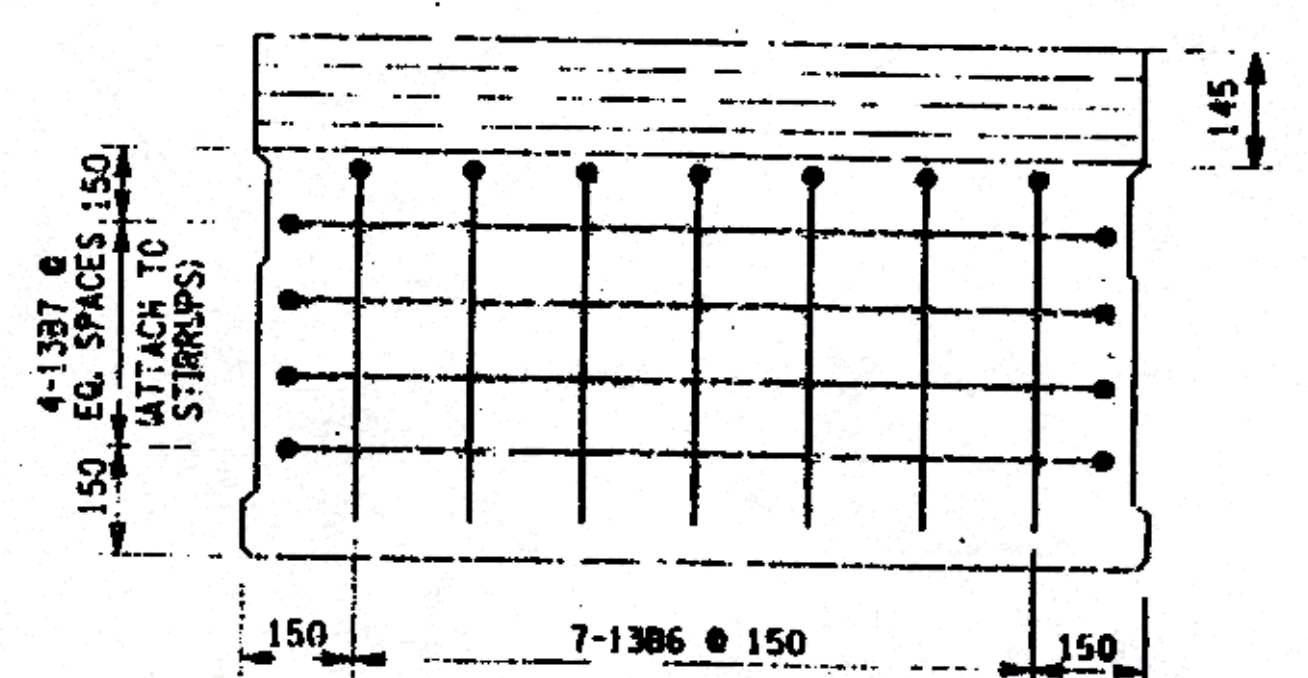
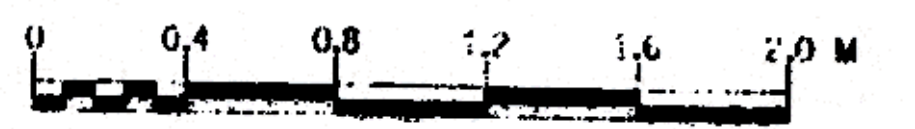
SECTION B-B
NOT TO SCALE



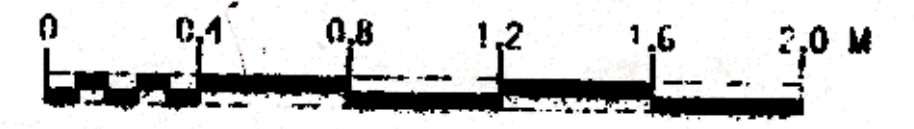
SECTION A-A



TYPICAL SECTION



END BLOCK REINFORCEMENT



PRESTRESSED CONCRETE BOX BEAM REINFORCEMENT
(PAID FOR UNDER ITEM 563.02M)

MARK	TOTAL NO.	LENGTH	TYPE	NO. PER BEAM	A	B	C	D	E	F	G
1381	130	8500	I	10	8500						
1382	520	1780	III	52	1100	380	300				
1383	350	1895	II	35	350	535	150	210	120	150	
1384	280	620	IB	28	520	300					
1385	160	1100	I	16	1100						
1386	140	1190	III	14	490	715					
1387	80	9910	III	8	1070	1430	1430				
1388	520	2310	IB	52	1100	605	605				

AS BUILT: NO REVISIONS 9/2003

ALL DIMENSIONS ARE IN mm UNLESS OTHERWISE NOTED
AS BUILT REVISIONS

Signature 9/2003
SIGNATURE DATE

COUNTY ROAD 18 OVER POULTNEY RIVER
PRESTRESSED CONCRETE BEAM DETAILS
(SHEET 1 OF 2)

WASHINGTON COUNTY
DEPARTMENT OF PUBLIC WORKS

FILENAME REGION DATE DRAWING NO.

FILE NAME: I:\Work\12287\CAD\Drawings\175376.dwg
DATE/TIME: 11/04/2003 10:00:40 AM
USER: BJR

DESIGNED BY: LMK
CHECKED BY: LMK
DESIGNED BY: BJR
CHECKED BY: BJR
DESIGNED BY: LMK
CHECKED BY: LMK
DESIGNED BY: LMK
CHECKED BY: LMK