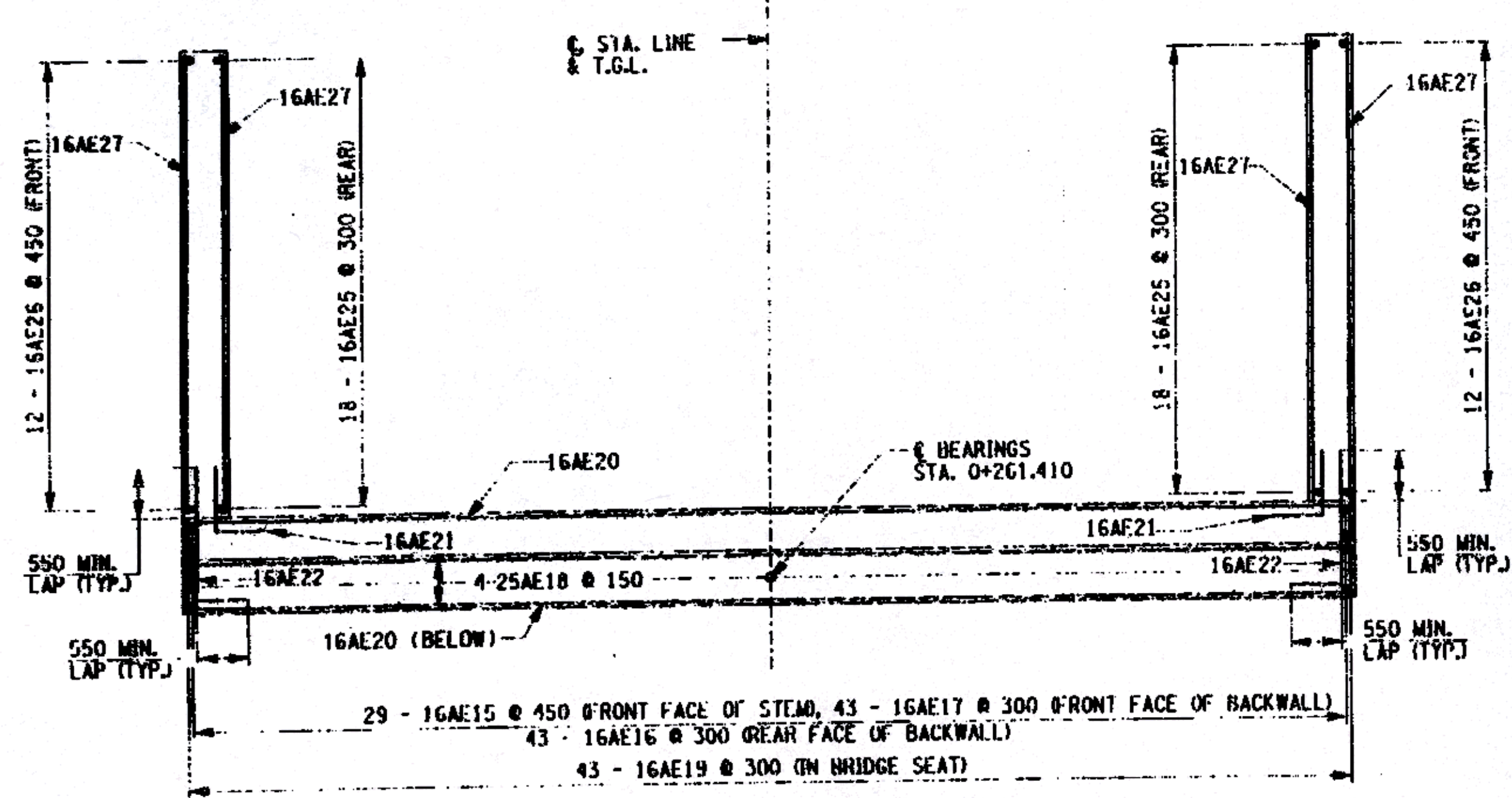
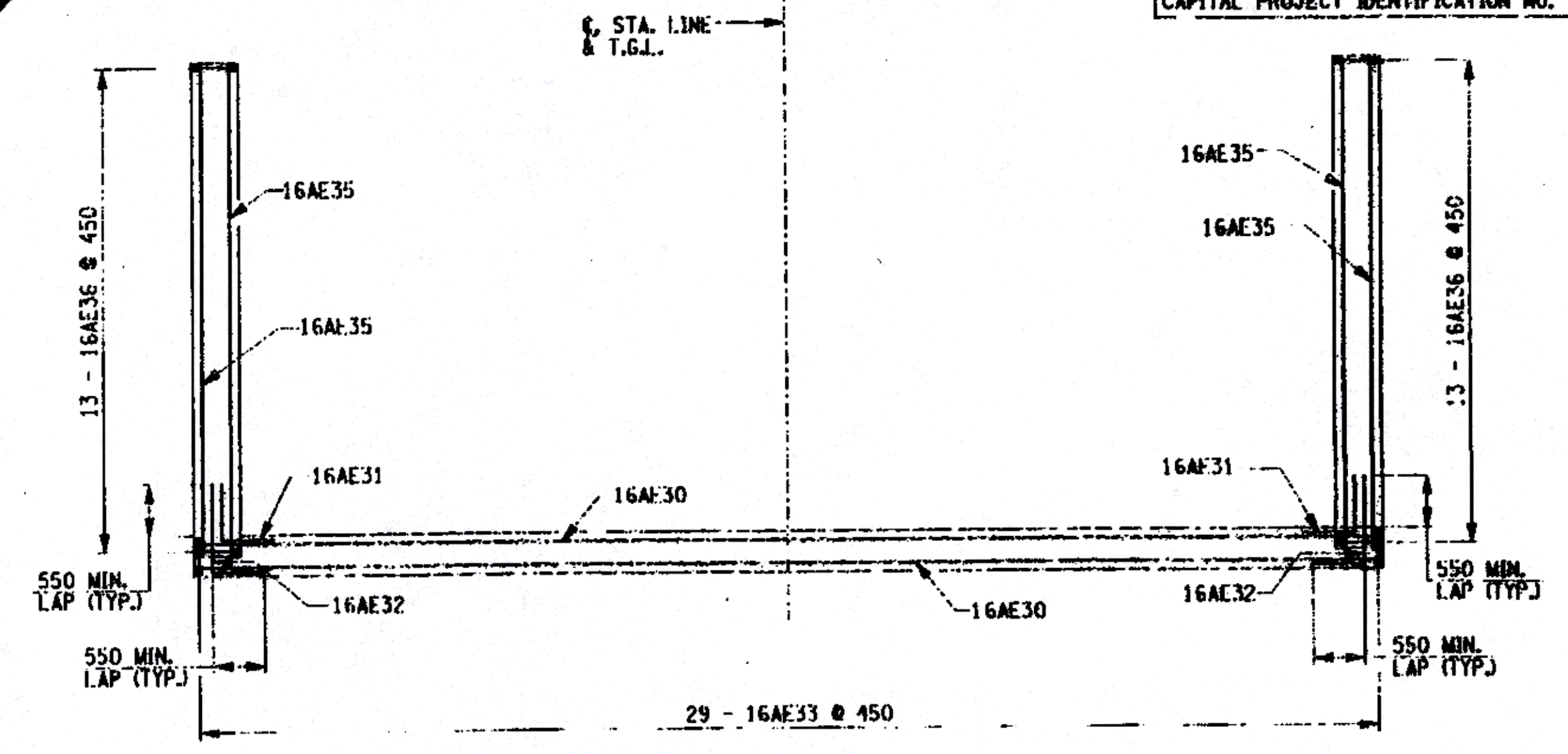


FED. ROAD RFG. NO.	STATE	CONTRACT NO.	SHEET	TOTAL
	1		N.Y.	28
COUNTY ROAD 18 OVER POULTNEY RIVER				
WASHINGTON COUNTY, NY / RUTLAND COUNTY, VT				
TOWN OF HAMPTON, NY / POULTNEY, VT				
CAPITAL PROJECT IDENTIFICATION NO. 1753.76				



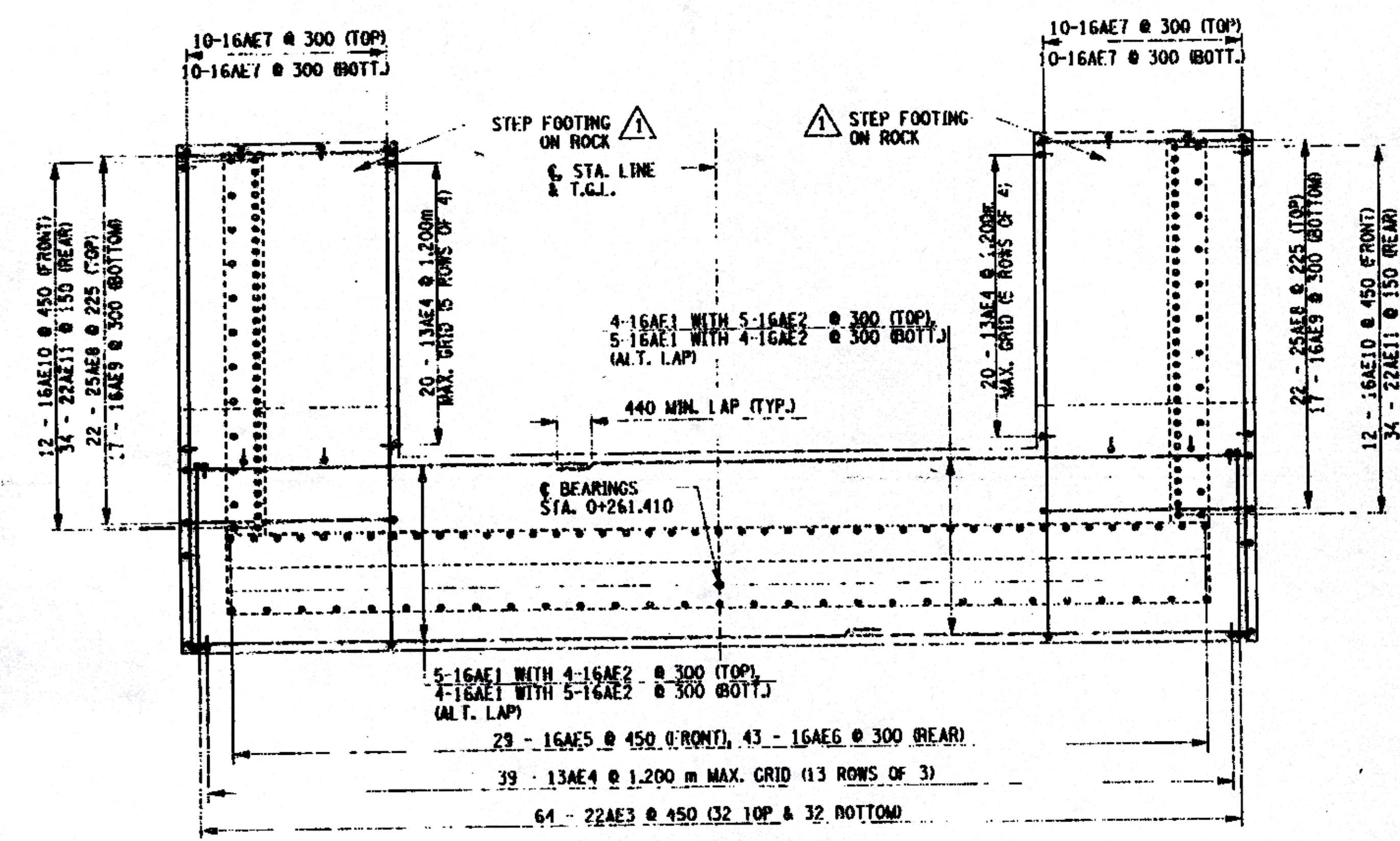
STEM AND LOWER WINGWALL
REINFORCEMENT PLAN

SCALE



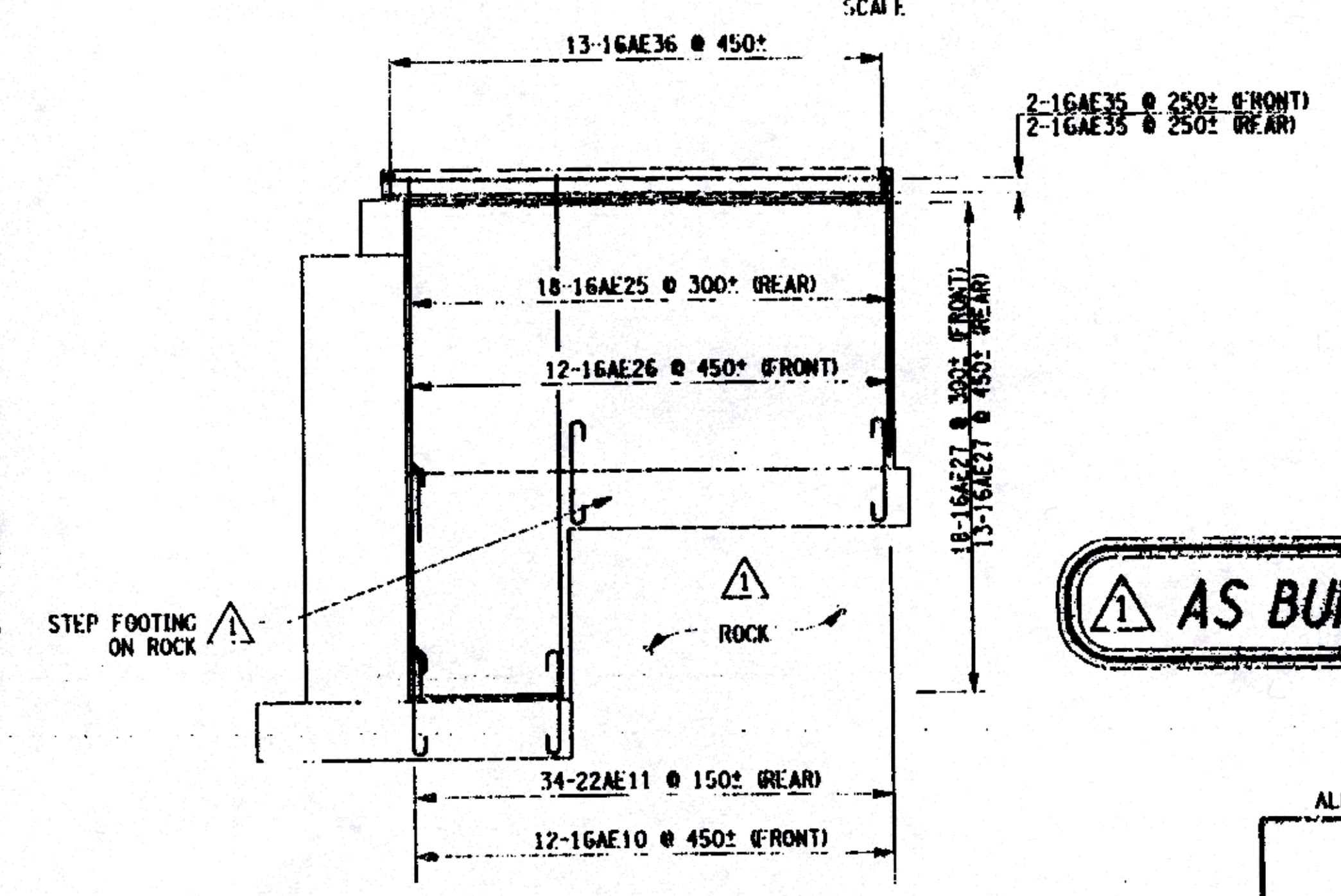
BACKWALL AND UPPER WINGWALL REINFORCING

SCALE



FOOTING REINFORCEMENT PLAN

SCALE



U-WALL REINFORCEMENT PLAN

SCALE

AS BUILT: REVISIONS 9/2003

NOTES:
 FOR EAST ABUTMENT PLAN AND ELEVATION, SEE DWG. NO. ST-11.
 FOR ADDITIONAL EAST ABUTMENT REINFORCEMENT DETAILS, SEE DWG. NO. ST-13.
 ALL COVER SHALL BE 75 mm IN THE FOOTING AND 50 mm ELSEWHERE, UNLESS OTHERWISE NOTED.

ALL DIMENSIONS ARE IN mm UNLESS OTHERWISE NOTED				
AS BUILT REVISIONS				
<i>James E. Stinson</i>		9/2003		
SIGNATURE		DATE		
COUNTY ROAD 18 OVER POULTNEY RIVER				
EAST ABUTMENT PLAN AND U-WALL ELEVATION REINFORCEMENT				
WASHINGTON COUNTY DEPARTMENT OF PUBLIC WORKS				
FILENAME	REGION	DATE	DRAWING NO.	
175376AA.A1F	ONE	3/2002	ST-12	

FILE NAME = J:\work\175376\CD\DWG\ST-12.dwg
 DATE/TIME = 11/04/2003 10:06:22 AM
 USER = RJK

DESIGN SUPERVISOR: JIC
 JOB MANAGER: JIC
 CHECKED BY: LAK
 ESTIMATED BY: EKT
 DESIGNED BY: EKT
 CHECKED BY: EKT