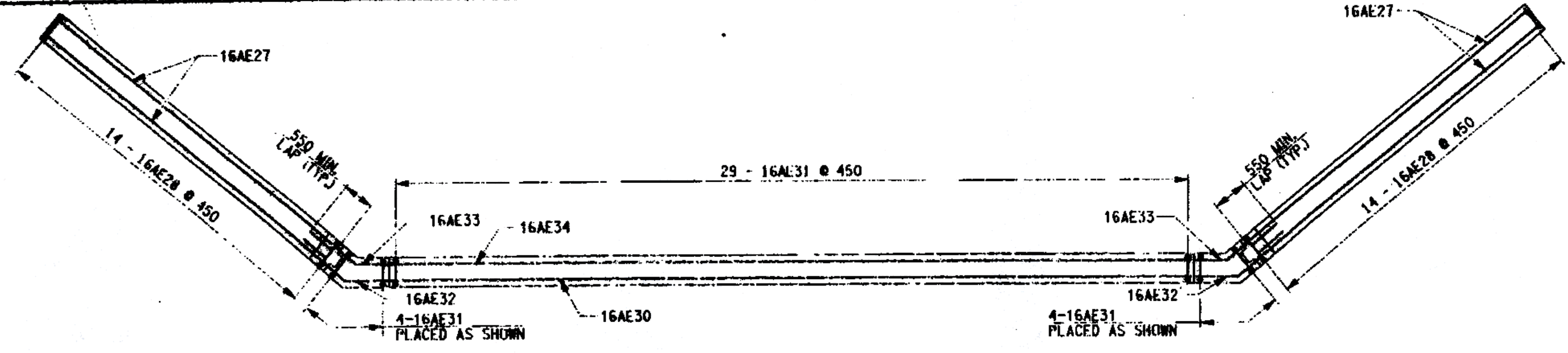
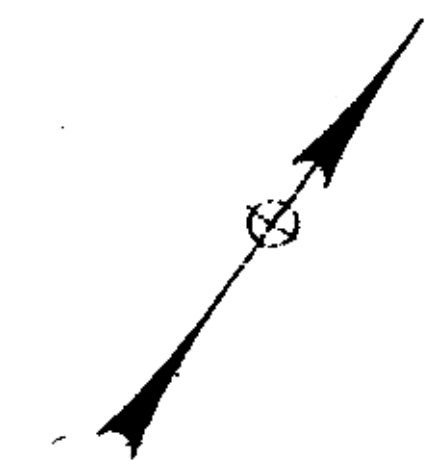
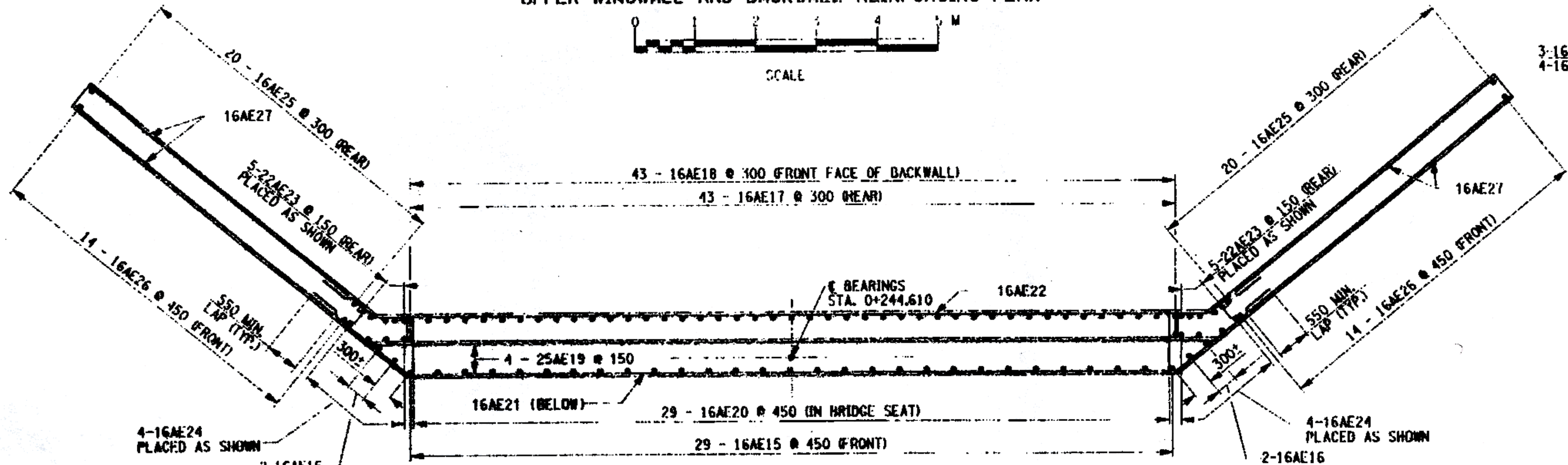
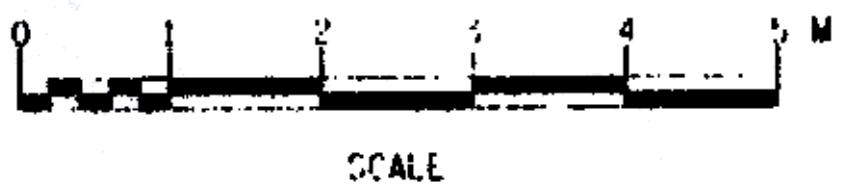


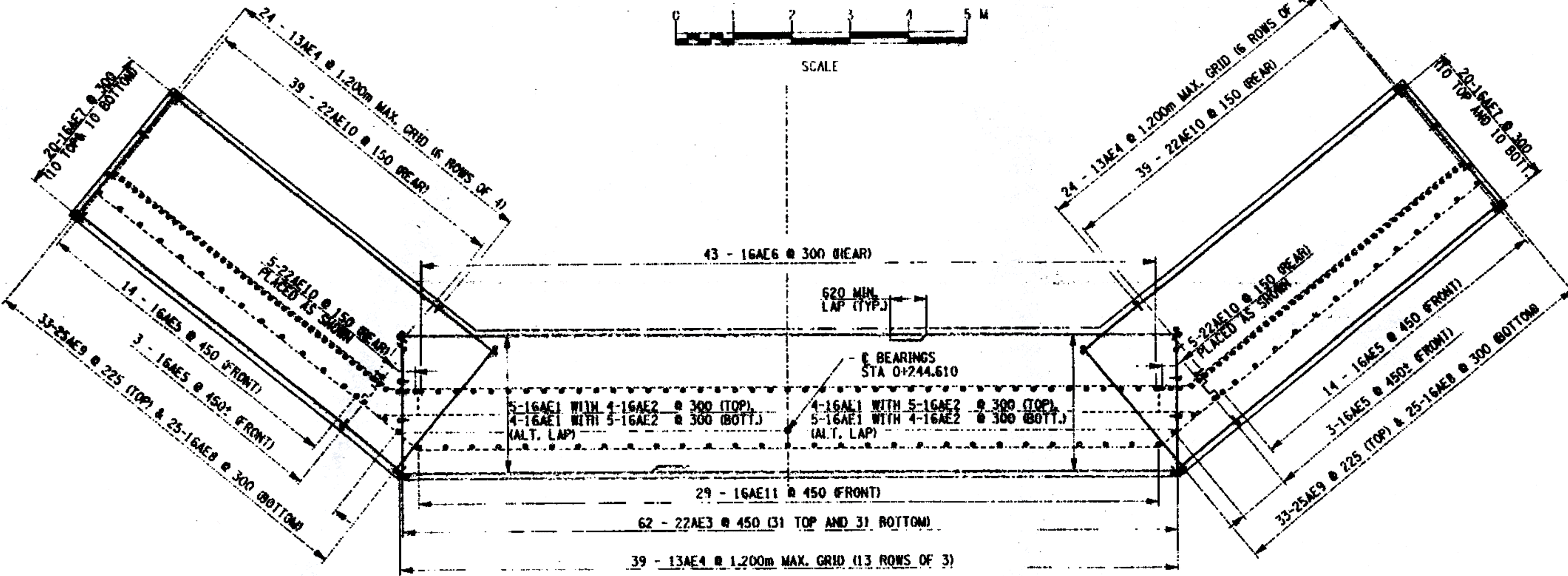
FLD ROAD HLG. NO.	STATE	CONTRACT NO.	SHEET NO.	TOTAL SHEETS
1	N.Y.		25	43
COUNTY ROAD 18 OVER POLTNEY RIVER				
WASHINGTON COUNTY, NY / RUTLAND COUNTY, VT				
TOWN OF HAMPTON, NY / POLTNEY, VT				
CAPITAL PROJECT IDENTIFICATION NO. 1753.76				



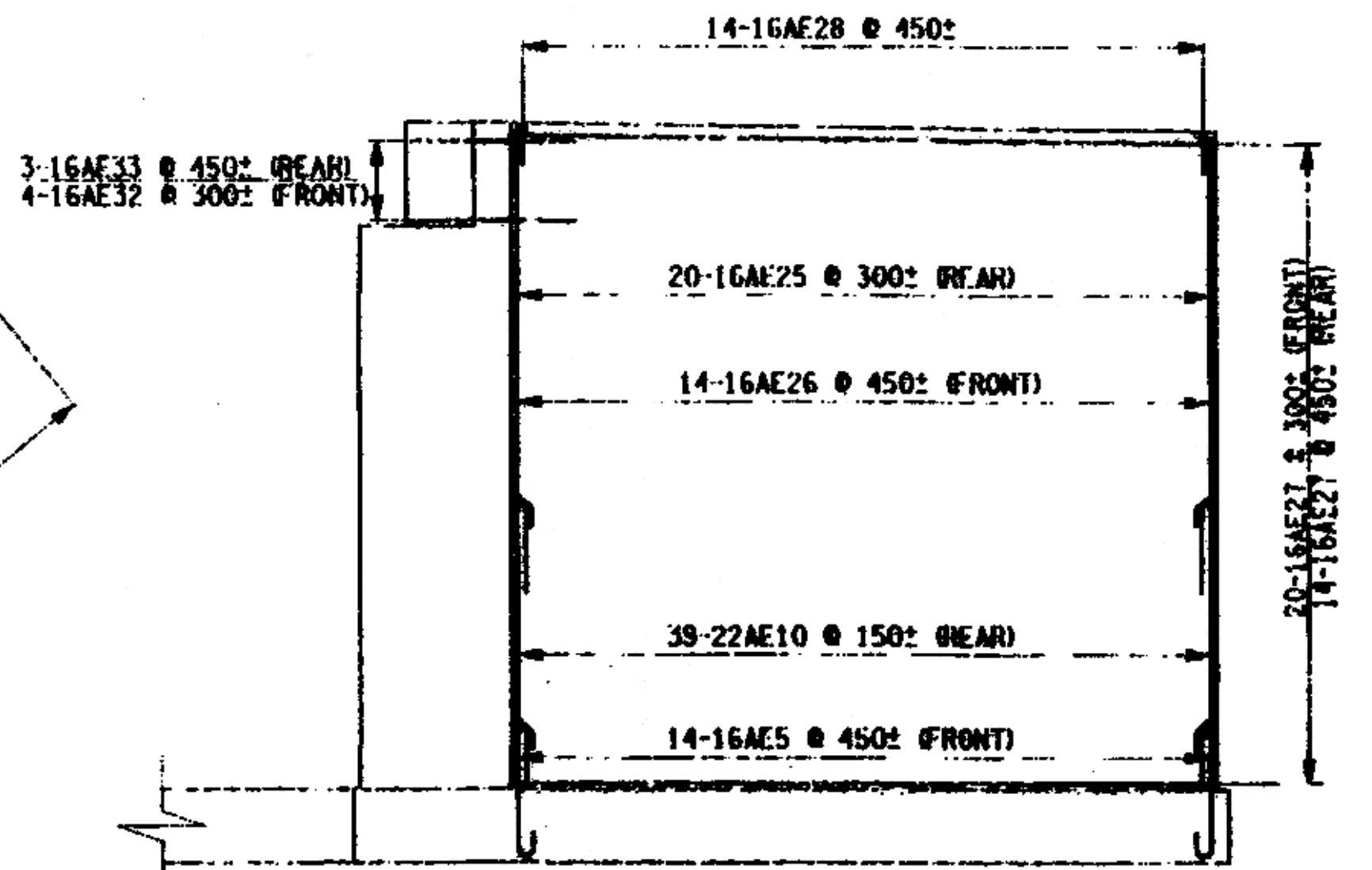
UPPER WINGWALL AND BACKWALL REINFORCING PLAN



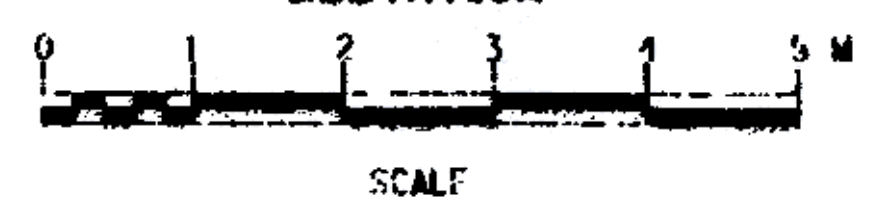
STEM REINFORCEMENT PLAN



FOOTING REINFORCEMENT PLAN



TYPICAL WINGWALL REINFORCEMENT ELEVATION



**AS BUILT: NO REVISIONS 9/2003**

NOTES:  
 FOR WEST ABUTMENT PLAN AND ELEVATION, SEE DWG. NO. ST-8  
 FOR ADDITIONAL WEST ABUTMENT REINFORCEMENT DETAILS, SEE DWG. NO. ST-10  
 ALL COVER SHALL BE 75mm IN THE FOOTING AND 50mm ELSEWHERE, UNLESS OTHERWISE NOTED.

ALL DIMENSIONS ARE IN mm UNLESS OTHERWISE NOTED  
 AS BUILT REVISIONS

*James E. Stinson* 9/2003  
 SIGNATURE DATE

COUNTY ROAD 18 OVER POLTNEY RIVER  
 WEST ABUTMENT PLAN AND  
 WINGWALL ELEVATION REINFORCEMENT

WASHINGTON COUNTY  
 DEPARTMENT OF PUBLIC WORKS

FILENAME	REGION	DATE	DRAWING NO.
175376AA-A1C	ONE	3/2002	ST-9

FILE NAME = J:\work\175376\175376AA-A1C.dwg  
 DATE/TIME = 11/04/2003 10:03:44 AM  
 USER = JLN

DESIGN SUPERVISOR JAC JOB MANAGER JAC CHECKED BY EKT ESTIMATED BY EKT CHECKED BY EKT DRAWN BY EKT