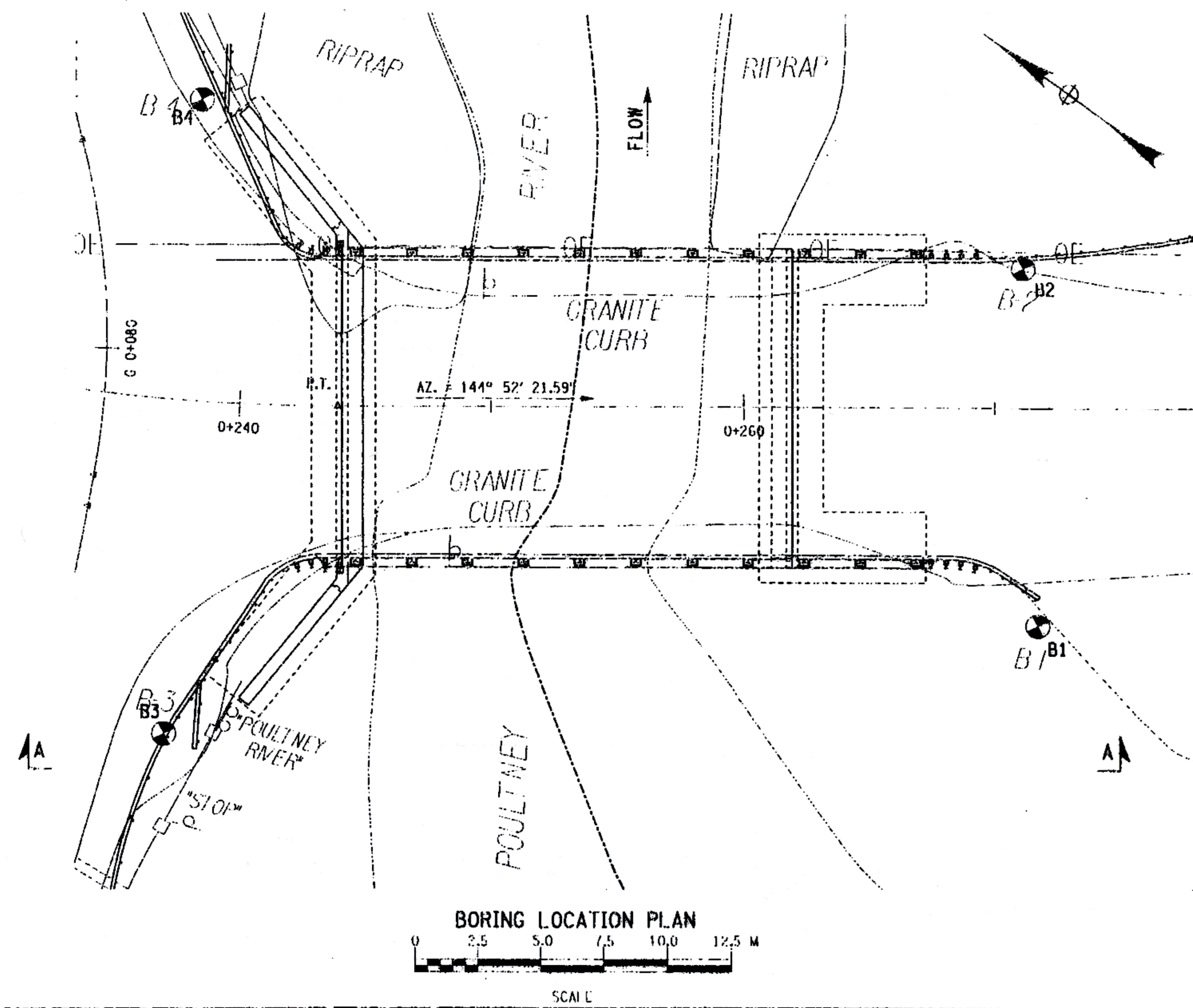
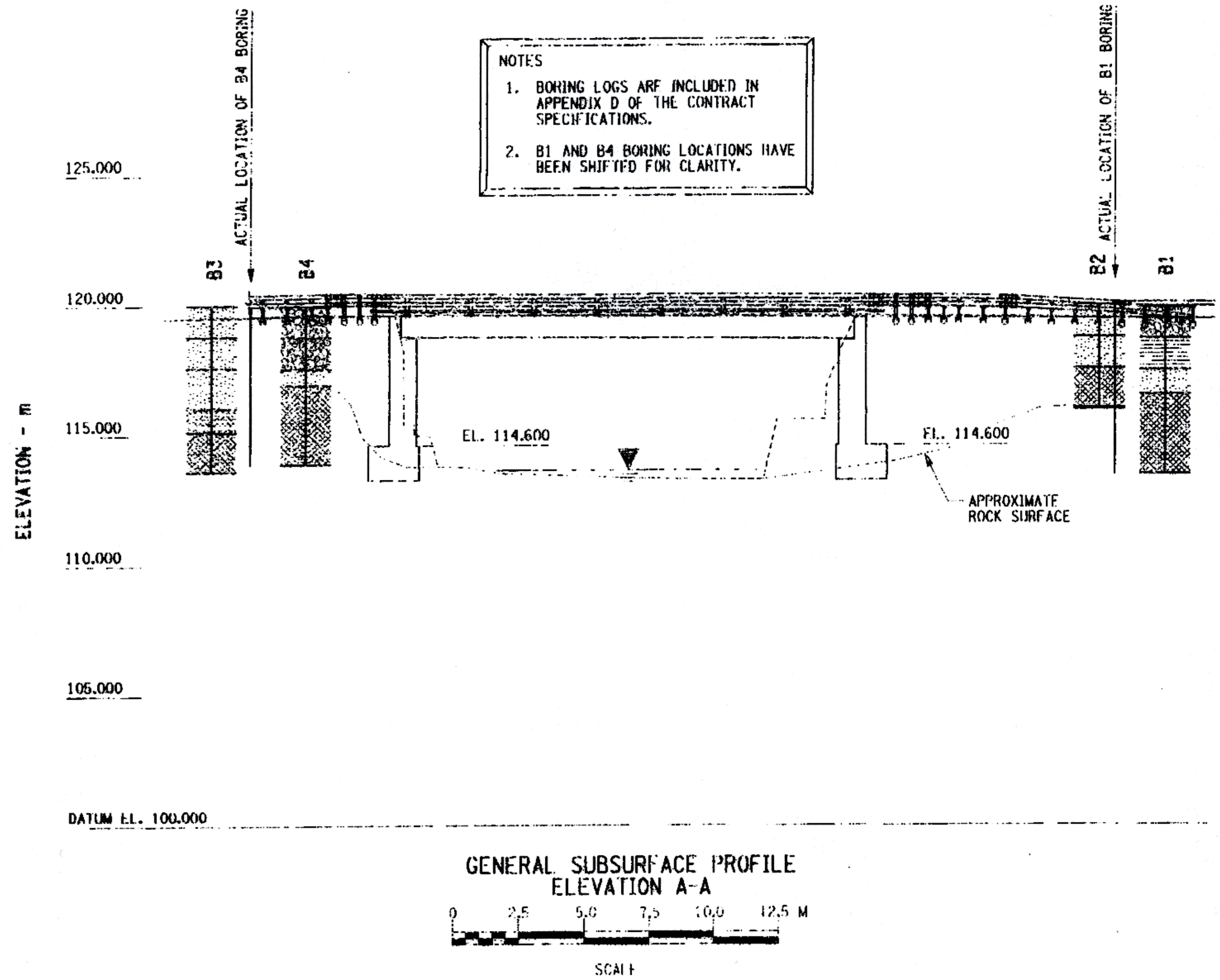


AS BUILT: NO REVISIONS 9/2003

FED. ROAD REG. NO.	STAFF	CONTRACT NO.	SHEET NO.	TOTAL SHEETS
1	N.Y.		20	43
COUNTY ROAD 18 OVER POULTNEY RIVER				
WASHINGTON COUNTY, NY / RUTLAND COUNTY, VT				
TOWN OF HAMPTON, NY / POULTNEY, VT				
CAPITAL PROJECT IDENTIFICATION NO. 1753.76				



FILE NAME = S:\work\175376\175376\175376.dwg
 DATE/TIME = 11/04/2003 10:28:43 AM
 USER = RJN

DESIGNED BY LAK CHECKED BY LAK ESTIMATED BY EXT DRAFTED BY RJN CHECKED BY EXT

REFERENCE PLANS

PRELIMINARY STRUCTURE PLANS USED FOR ANALYSIS WERE:

PREPARED BY: EARTH TECH

GENERAL NOTES

1.) SOUND ENGINEERING JUDGMENT WAS EXERCISED IN PREPARING THE SUBSURFACE INFORMATION PRESENTED HEREON. THIS INFORMATION WAS PREPARED AND IS INTENDED FOR STATE DESIGN AND ESTIMATE PURPOSES ONLY. ITS PRESENTATION ON THE PLANS OR ELSEWHERE IS FOR THE PURPOSE OF PROVIDING INTENDED USERS WITH ACCESS TO THE SAME INFORMATION AVAILABLE TO THE STATE. THIS IS NOT INTENDED AS A SUBSTITUTE FOR PERSONAL INVESTIGATION, INDEPENDENT INTERPRETATIONS OR JUDGEMENT OF THE CONTRACTOR.

2.) GENERAL SOIL AND ROCK (WHERE ENCOUNTERED) STRATUM DESCRIPTIONS AND INDICATED BOUNDARIES ARE BASED ON AN ENGINEERING INTERPRETATION OF ALL AVAILABLE SUBSURFACE INFORMATION BY THE GEOTECHNICAL ENGINEERING BUREAU AND MAY NOT NECESSARILY REFLECT THE ACTUAL VARIATION IN SUBSURFACE CONDITIONS BETWEEN BORINGS AND SAMPLES. DETAILED DATA AND FIELD INTERPRETATIONS OF CONDITIONS ENCOUNTERED IN INDIVIDUAL BORINGS ARE SHOWN ON THE SUBSURFACE EXPLORATION LOGS.

3.) THE OBSERVED WATER LEVELS AND/OR CONDITIONS INDICATED ON THE SUBSURFACE PROFILES ARE AS RECORDED AT THE TIME OF EXPLORATION. ACTUAL WATER LEVELS MAY DIFFER FROM THE OBSERVED WATER LEVEL BECAUSE OF LIMITATIONS IN THE NUMBER AND DURATION OF OBSERVATIONS AND WILL VARY WITH CHANGES IN CLIMATE AND RAINFALL.

4.) ALL STRUCTURE DETAILS AND FOOTING ELEVATIONS SHOWN HEREON ARE FOR ILLUSTRATIVE PURPOSES ONLY AND MAY NOT BE INDICATIVE OF THE FINAL DESIGN CONDITIONS SHOWN ON THE CONTRACT PLANS.

LEGEND

THE FOLLOWING TABLES SUMMARIZE THE DESCRIPTIVE INFORMATION USED ON THIS PROFILE.

DENSITY (NON-PLASTIC SOILS)	NO. OF BLOWS PER 0.3 m OF PENETRATION OF A 50.8 mm O.D. (34.9 mm I.D.) SAMPLER USING A 136 kg DROP HAMMER, 457 mm FALL.
Very Loose	0-3
Loose	4-8
Medium Compact	9-20
Compact	21-35
Very Compact	over 35

CONSISTENCY (PLASTIC SOILS)	
Very Soft	0-2
Soft	3-6
Firm	7-12
Stiff	13-20
Hard	over 20

SYMBOLS

DRILL HOLE

VERY LOOSE TO MEDIUM COMPACT BROWN BROWN-BLACK GRAVEL

VERY LOOSE TO MEDIUM COMPACT BROWN OLIVE-BROWN BROWN GREY SAND

WOOD FRAGMENTS

GRAY SLATE FRAGMENTS

BLUE-GRAY SLATE WITH CALCITE SEAMS

ALL DIMENSIONS ARE IN mm UNLESS OTHERWISE NOTED

AS BUILT REVISIONS

James E. Estima 9/2003
SIGNATURE DATE

COUNTY ROAD 18 OVER POULTNEY RIVER

BORING LOCATION PLAN AND GENERAL SUBSURFACE PROFILE

WASHINGTON COUNTY
DEPARTMENT OF PUBLIC WORKS

FILE NAME	REGION	DATE	DRAWING NO.
175376AA.GP1	ONE	3/2002	ST-4

