

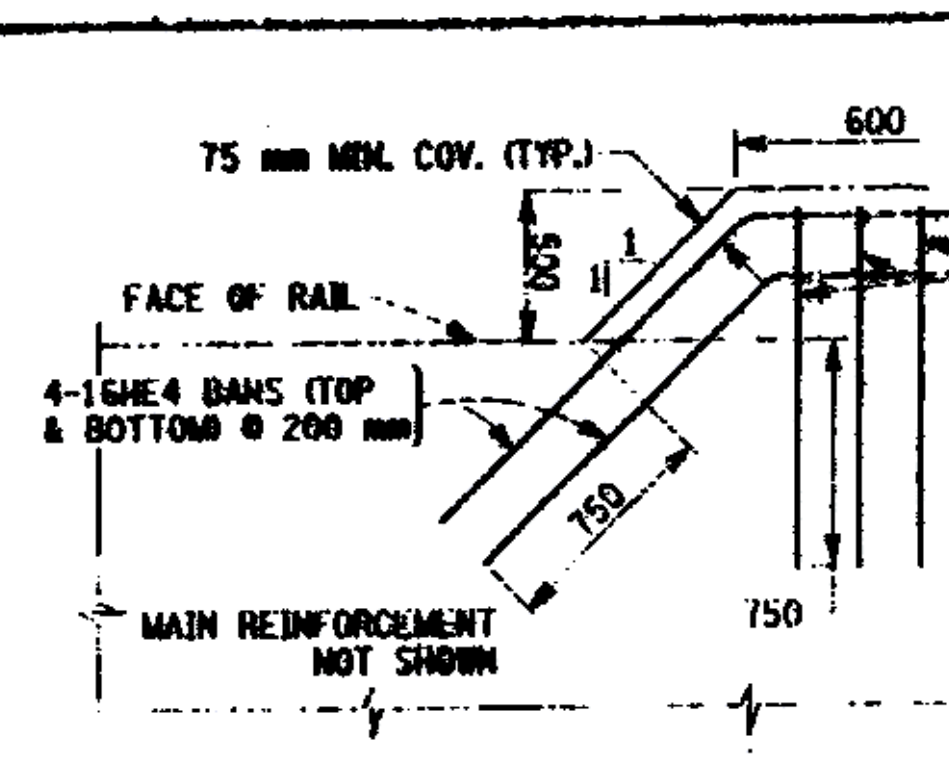
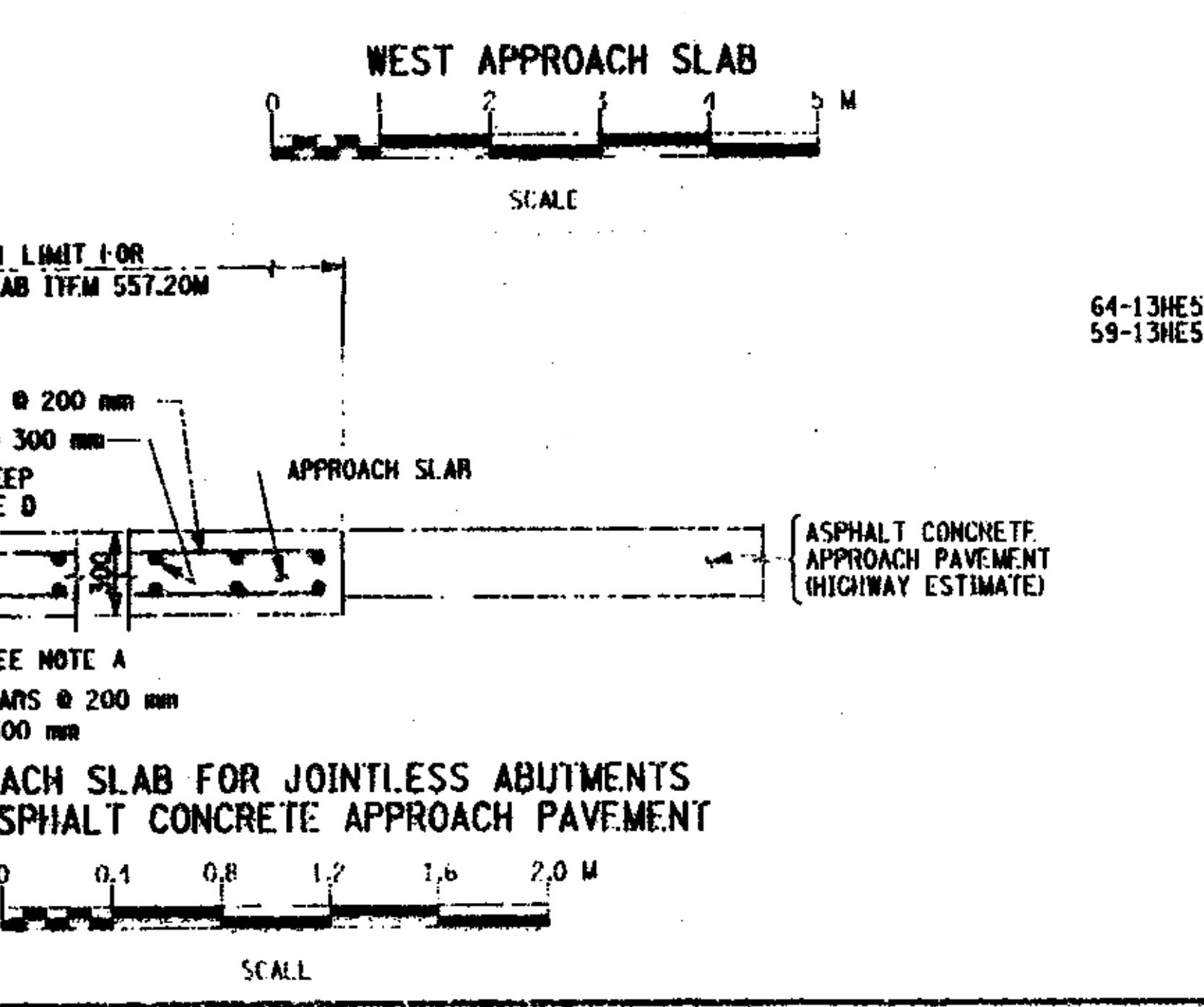
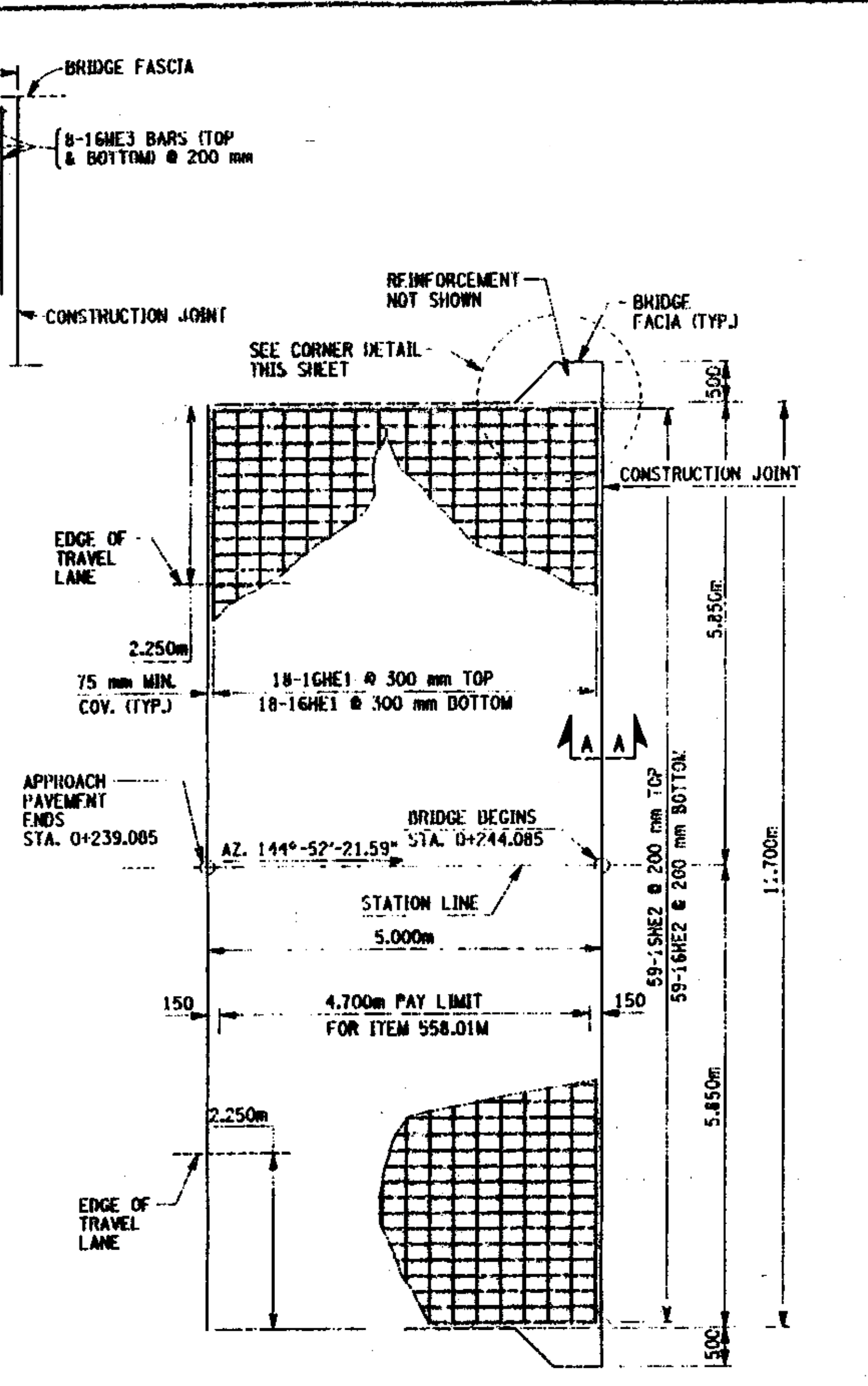
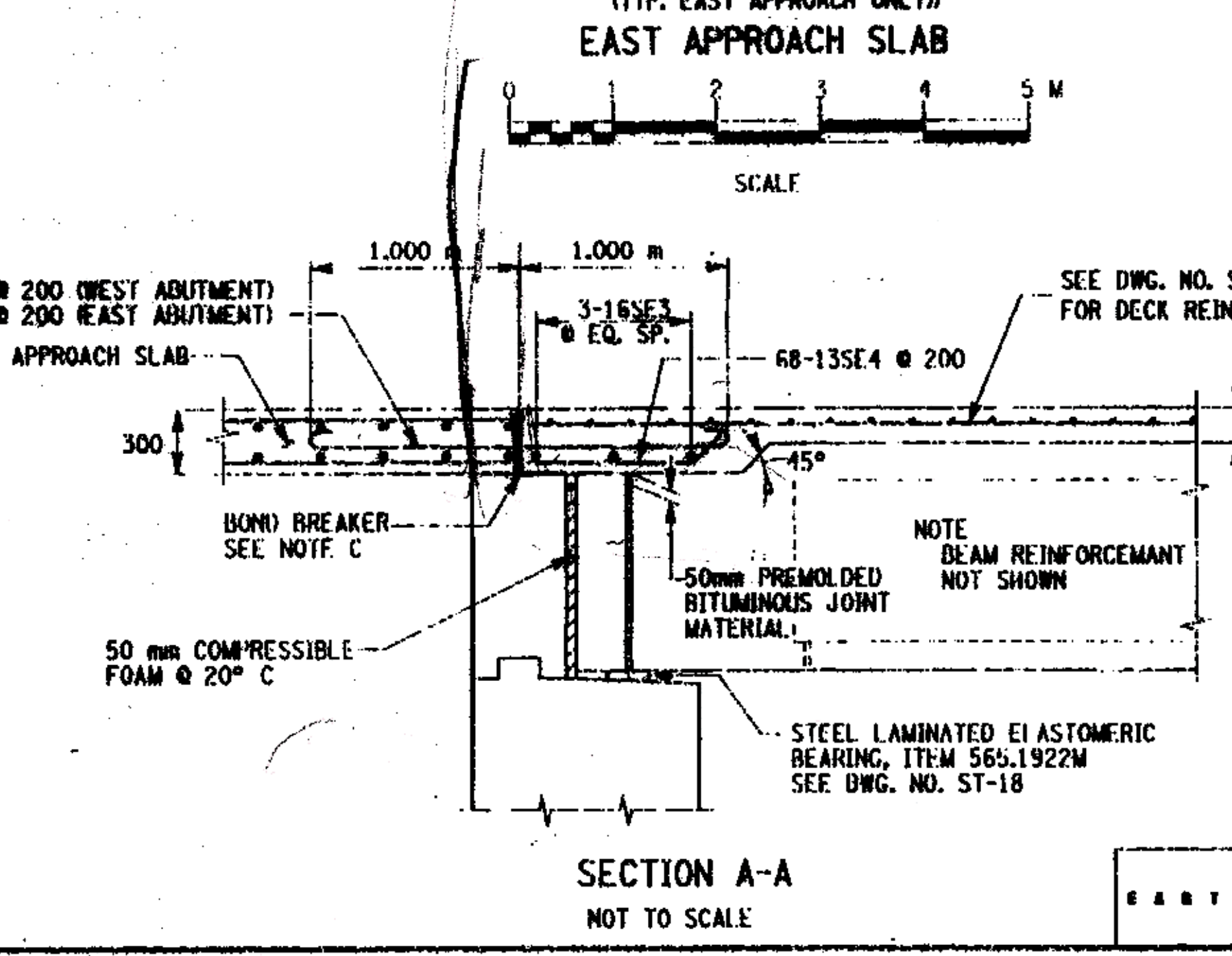
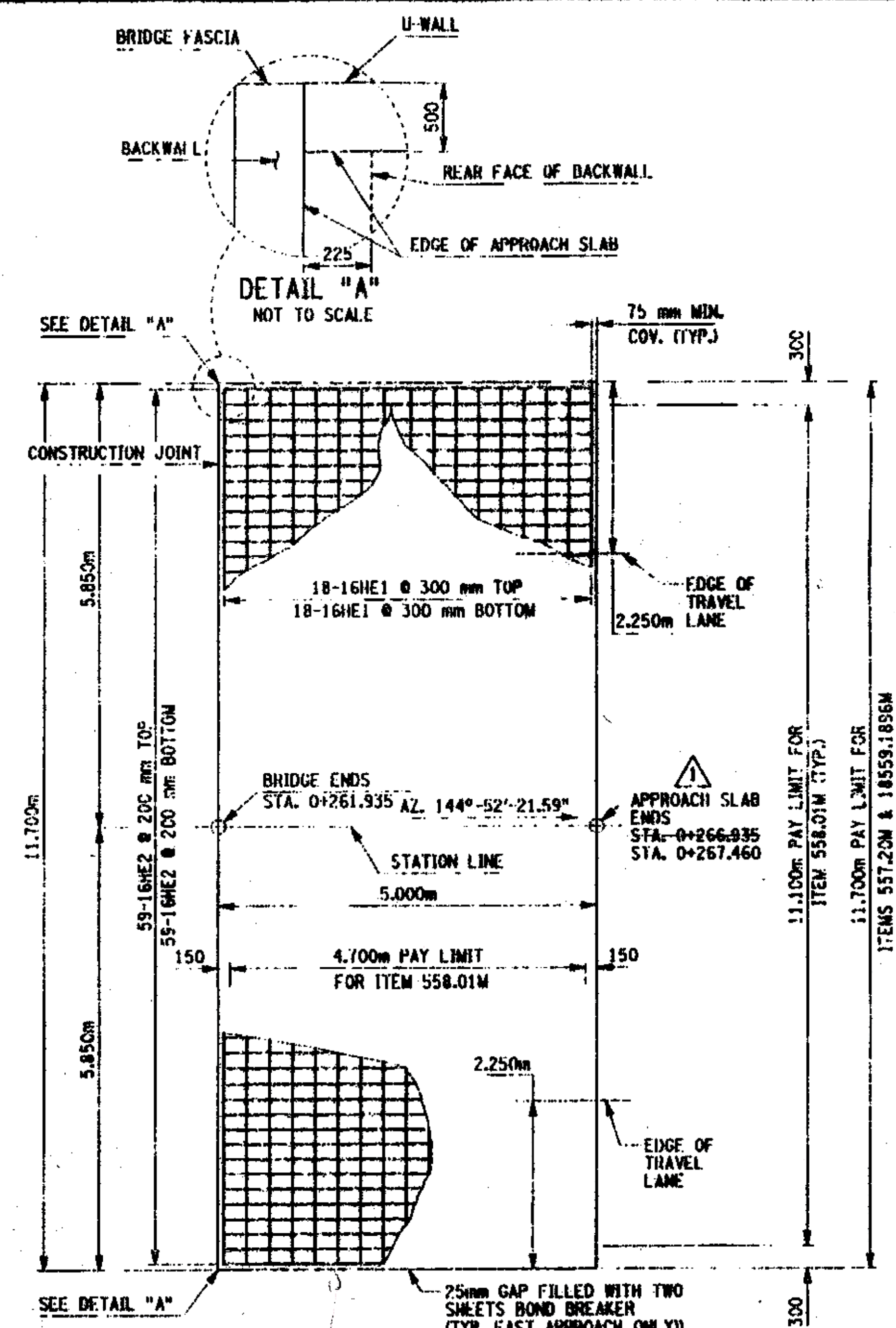
LEO ROAD R.C. NO.	STATE	CONTRACT NO.	SHEET NO.	TOTAL SHEETS
1	N.Y.		35	43
COUNTY ROAD 18 OVER POULTNEY RIVER				
WASHINGTON COUNTY, NY / RUTLAND COUNTY, VT				
TOWN OF HAMPTON, NY / POULTNEY, VT				
CAPITAL PROJECT IDENTIFICATION NO. 1753.76				

- NOTES:
- TO PERMIT UNHINDERED LONGITUDINAL MOVEMENT OF SLAB, THE SURFACE OF THE SUBBASE COURSE MUST BE ACCURATELY CONTROLLED TO FOLLOW AND BE PARALLEL TO THE ROADWAY GRADE AND CROSS SLOPE. POLYETHYLENE CURING COVERS (WHITE OPAQUE) IN ACCORDANCE WITH MATERIAL SPECIFICATION SUBSECTION 711-04 SHALL BE PLACED ON THE FINISHED SUBBASE COURSE THE FULL WIDTH OF THE APPROACH SLAB PRIOR TO PLACEMENT OF THE REINFORCEMENT. THE CURING COVERS SHALL BE 0.1 mm THICK, AND LAPS SHALL BE 600 mm MINIMUM.
 - FILL THE RECESS WITH A STRUCTURAL JOINT MATERIAL, LIQUID SEALANT, FROM THE DEPARTMENT'S APPROVED LIST. THE MANUFACTURER'S RECOMMENDATIONS SHALL BE FOLLOWED FOR THOSE SEALANTS THAT REQUIRE A PRIMER. THE CONCRETE SHALL CURE FOR MINIMUM OF 7 DAYS BEFORE JOINT IS SEALED. SEALING SHALL ONLY BE PERFORMED WHEN THE CONCRETE TEMPERATURE IS 5°C OR ABOVE. BOTH JOINT FACES SHALL BE SAND BLASTED TO ROUGHEN THE SURFACE AND TO REMOVE ALL SURFACE MOISTURE AND ANY OTHER MATERIAL THAT MAY INTERFERE WITH BOND.
 - TOP OF BACKWALL SHALL BE STEEL TROWEL FINISHED. SHEET GASKET (TREATED BOTH SIDES) MATERIAL SPECIFICATION 728-06, SHALL BE PLACED ON THE TOP OF BACKWALLS. TWO 1.6 mm THICK SHEETS SHALL BE USED, AND PAYMENT SHALL BE INCLUDED IN THE UNIT PRICE BID FOR THE APPROACH ITEM.
 - FILL THE RECESS WITH A STRUCTURAL JOINT MATERIAL, LIQUID SEALANT, FROM THE DEPARTMENT'S APPROVED LIST. IF THE RECESS IS SAW CUT, WATER BLAST IMMEDIATELY FOLLOWING CUTTING TO REMOVE ANY RESIDUAL SLURRY BEFORE IT DRIES. CLEAN THE VERTICAL FACES OF THE RECESS BY ABRASIVE BLAST, AND AIR BLOW THE RESIDUE FROM THE RECESS. PRIME THE VERTICAL FACES WITH THE MANUFACTURER'S RECOMMENDED PRIMER, AND ALLOW TO DRY. PLACE A 15 mm DIA. SOFT CELL BACKER ROD IN THE BOTTOM OF THE RECESS. POUR THE SILICONE TO A DEPTH OF APPROXIMATELY 9 mm. PAYMENT TO BE INCLUDED IN THE UNIT PRICE BID FOR THE APPROACH SLAB.
 - TOP SURFACES OF STRUCTURAL SLABS, APPROACH SLABS SHALL BE GROOVED UNDER THE TRANSVERSE SAWCUT GROOVING OF STRUCTURAL SLAB SURFACE ITEM 558.01M.
 - THE FULL DEPTH JOINT SHOWN IS MANDATORY. A PARTIAL DEPTH SAWCUT IS NOT PERMITTED.

CONCRETE TABLE			
	ITEM 557.20M	ITEM 558.01M	ITEM 10559.1096M
WEST	59.35 m ²	52.17 m ²	59.35 m ²
EAST	58.50 m ²	52.17 m ²	58.50 m ²

AS BUILT: REVISIONS 9/2003

ALL DIMENSIONS ARE IN mm UNLESS OTHERWISE NOTED			
AS BUILT REVISIONS			
<i>Signature</i>		9/2003	
SIGNATURE		DATE	
COUNTY ROAD 18 OVER POULTNEY RIVER			
APPROACH SLAB			
WASHINGTON COUNTY			
DEPARTMENT OF PUBLIC WORKS			
FILENAME	REGION	DATE	DRAWING NO.
1/5376AAJ11A	ONE	3/2002	ST-19



DESIGNED BY LAK
 CHECKED BY EXT
 ESTIMATED BY EXT
 DRAFTED BY RJN
 CHECKED BY EXT
 FILE NAME: I:\VIA\162007\CADD\Drawings\175376AA.HIA
 DATE/TIME: 11/24/2003 10:16:21 AM
 USER: RJK
 DESIGN SUPERVISOR JJC
 JCB MANAGER JJC