

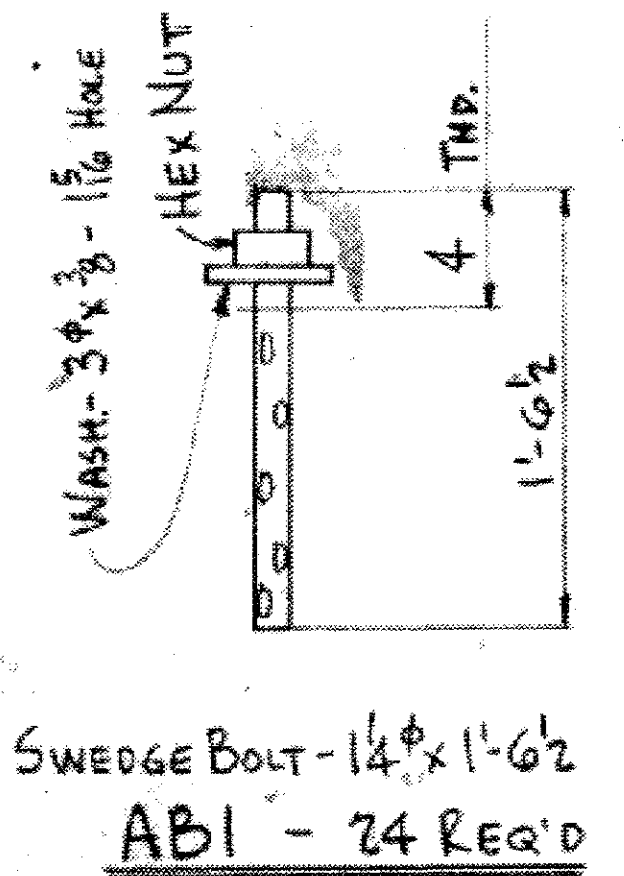
STRINGERS - G1 - ONE REQ'D
 - G2 - 2
 - G3 - ONE

STRINGERS - G4 - ONE REQ'D
 - G5 - 2
 - G6 - ONE

NOTE:
 ALL MAT'L. IS ASTM-A36.

UNLESS OTHERWISE NOTED
 RIVETS ✓
 BOLTS 15
 HOLES 16
 WELDS AS SHOWN
 PAINT VERMONT SPEC.
 RED LEAD

DETAIL of pa



REQUIRED										ASTM-A36	
SHOP BILL										MILL ORDER	
LINE	ASSEMBLY MARK	NO.	SHAPE	SECTION	LENGTH	REMARKS	WEIGHT	NO.	SHAPE & SECTION	LENGTH	ITEM
1											
2						ONE STRINGER G1					
3						2 STRINGERS G2					
4						ONE STRINGER G3					
5											
6						4 30 WF108 71 8 7/8					CAMBER 1/8
7	ph	8	R	9 x 1/2	10 0						
8	pc	8	R	10 x 5/8	3 6 1/2						
9	pb	16	R	4 x 5/8	3 6 1/2						
10	pd	8	R	13 1/2 x 3/8	1 6						
11	ph	4	R	7 x 1	11 1/2						
12	pk	4	R	7 x 1	1 1						
13	pa	24	R	7 x 2	2 0						4-G1, G3 18-G2
14						72 STUD - 1/2 x 3" - THREADED					
15						72 HEX NUTS - 1/2" TAP					
16						72 WASH - 9/16" HOLE					
17						40 SHIPPING BOLTS - 7/8"					
18											
19											
20											
21											
22											
23											
24						ONE STRINGER G4					
25						2 STRINGERS G5					
26						ONE STRINGER G6					
27											
28						4 30 WF108 43 8 7/8					CAMBER 1/8
29	ph	4	R								
30	pa	18	R								13-44, G6 16-G5
31						44 STUD - 1/2 x 3" - THREADED					
32						44 HEX NUTS - 1/2" TAP					
33						44 WASH - 9/16" HOLE					
34											
35											
36											
37	FS1	4	R	9 x 1/2	1 1	MACH					
38											
39											
40	ESI	8	R	9 x 1/2	10	MACH					
41											
42											
43											
44						24 SWEDGE BOLTS - ABI					
45						24 1/4" 11/4"					1 G2
46						24 WASH 3/8 x 3/8 - 1 1/8" HOLE					
47						24 HEX NUTS - 1/4" TAP					
48											
49											
50											
51											
52											
53											
54											
55											
56											
57											
58											
59											
60											
61											
62											

A. LEO NASH STEEL CORP.
 ALNASCO
 Fabricating, Warehousing
 PHONE: HILLCREST & BOST. CENTRAL VERMONT BLVD. PITTSFIELD, MASS.

OWNER: STATE OF VERMONT
 STRUCTURE: COVERED BRIDGE OVER OMPOMPANOOSUC RIVER
 LOCATION: TOWN OF THETFORD, VERMONT

ARCHITECT: VT. DEPT. OF HIGHWAYS
 CONTRACTOR: OLSON CONST.

DWN BY: JB *
 CHKD BY: []
 DATE: 8/1
 I.O. NO.: 63-371
 DWG. NO.: 371-1

63-371-13M