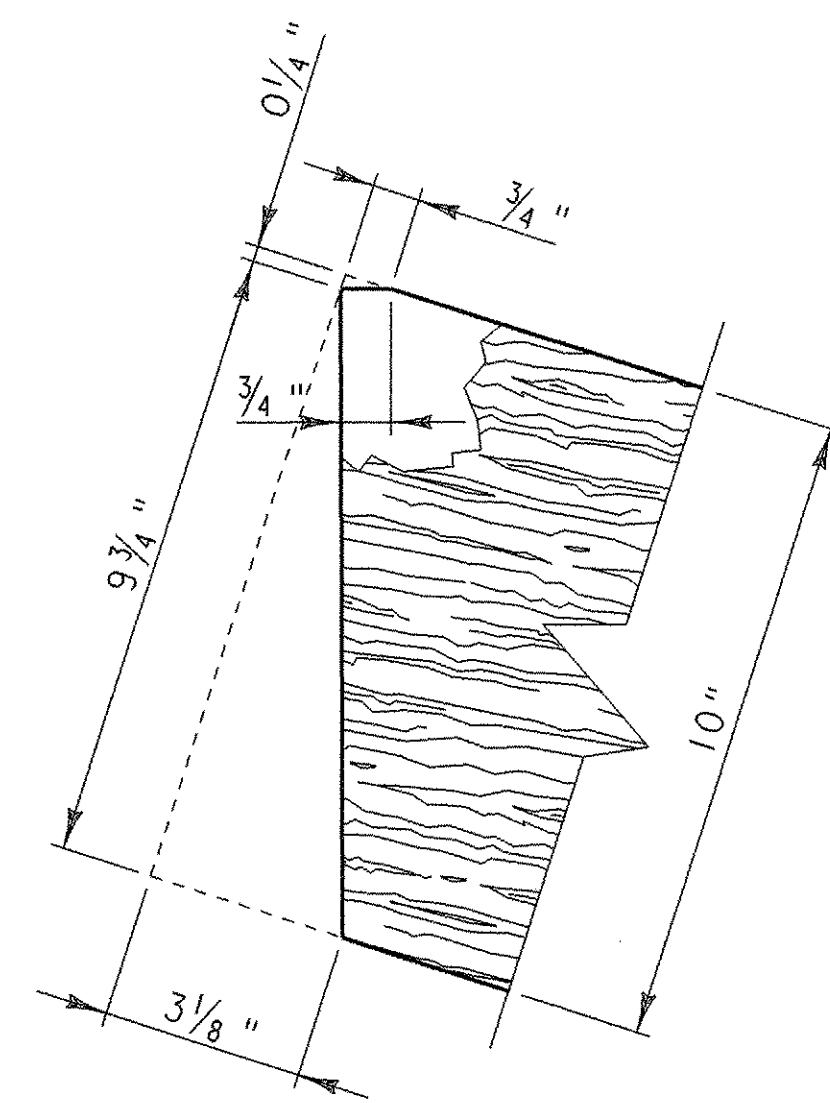
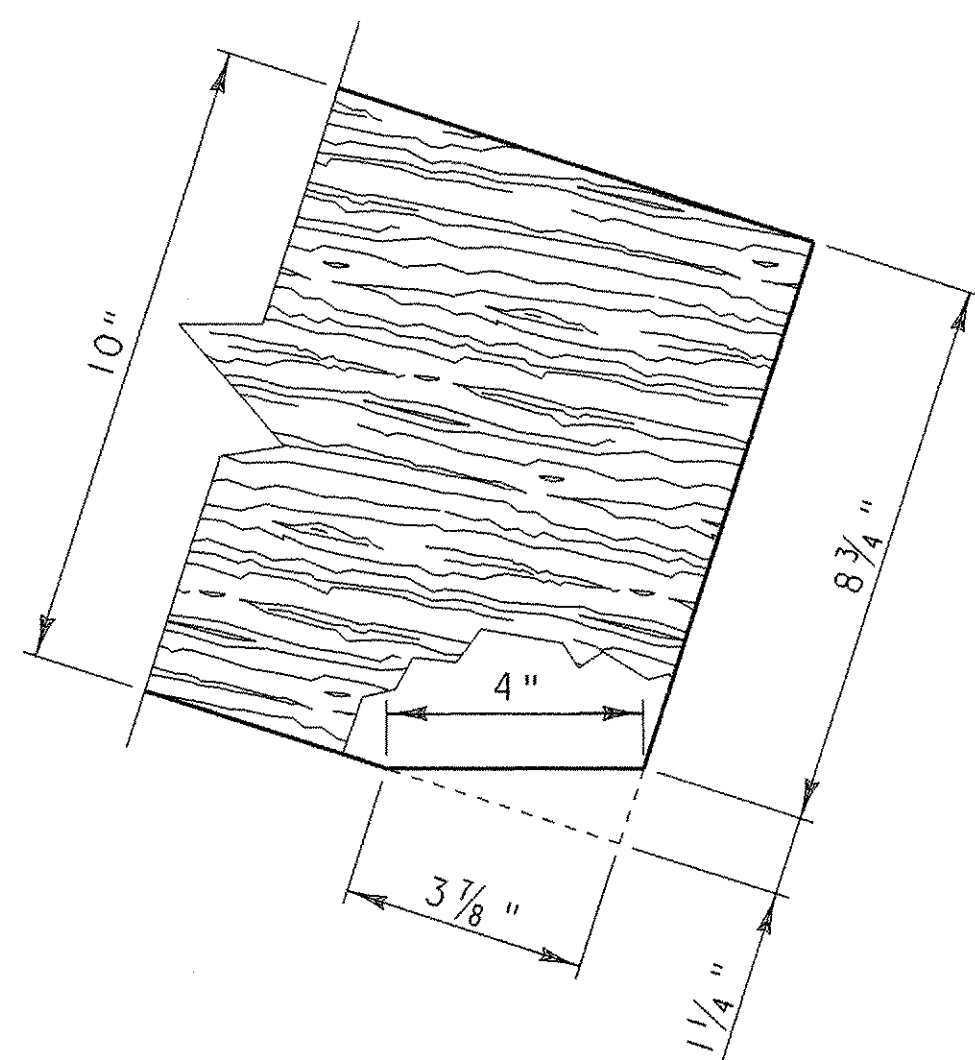


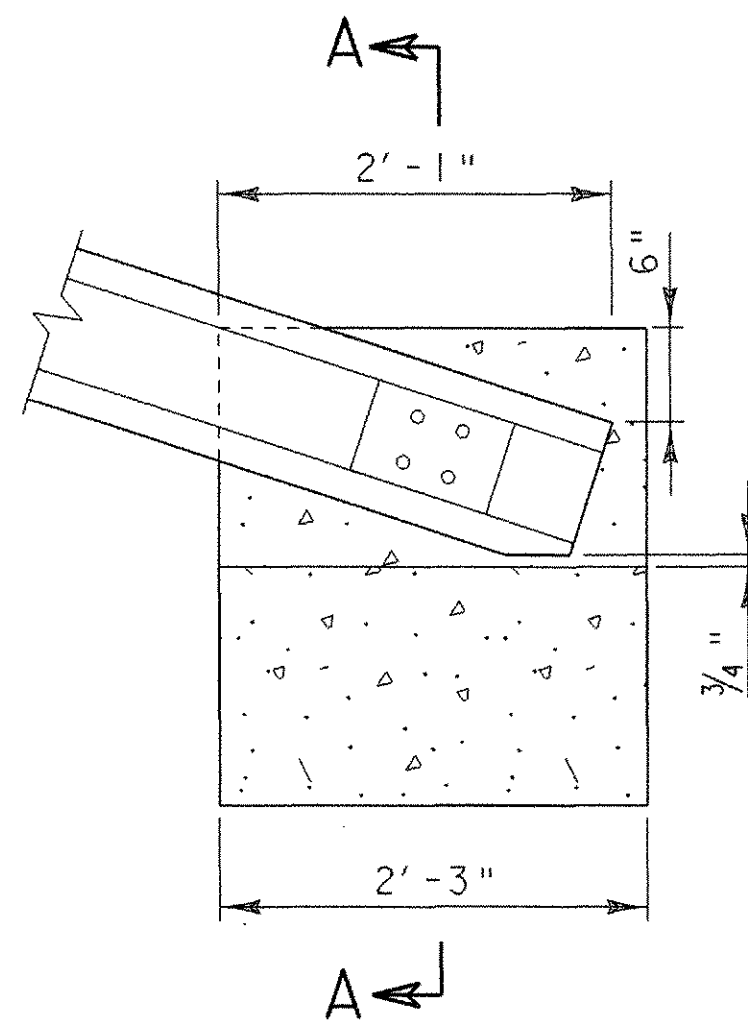
ELEVATION



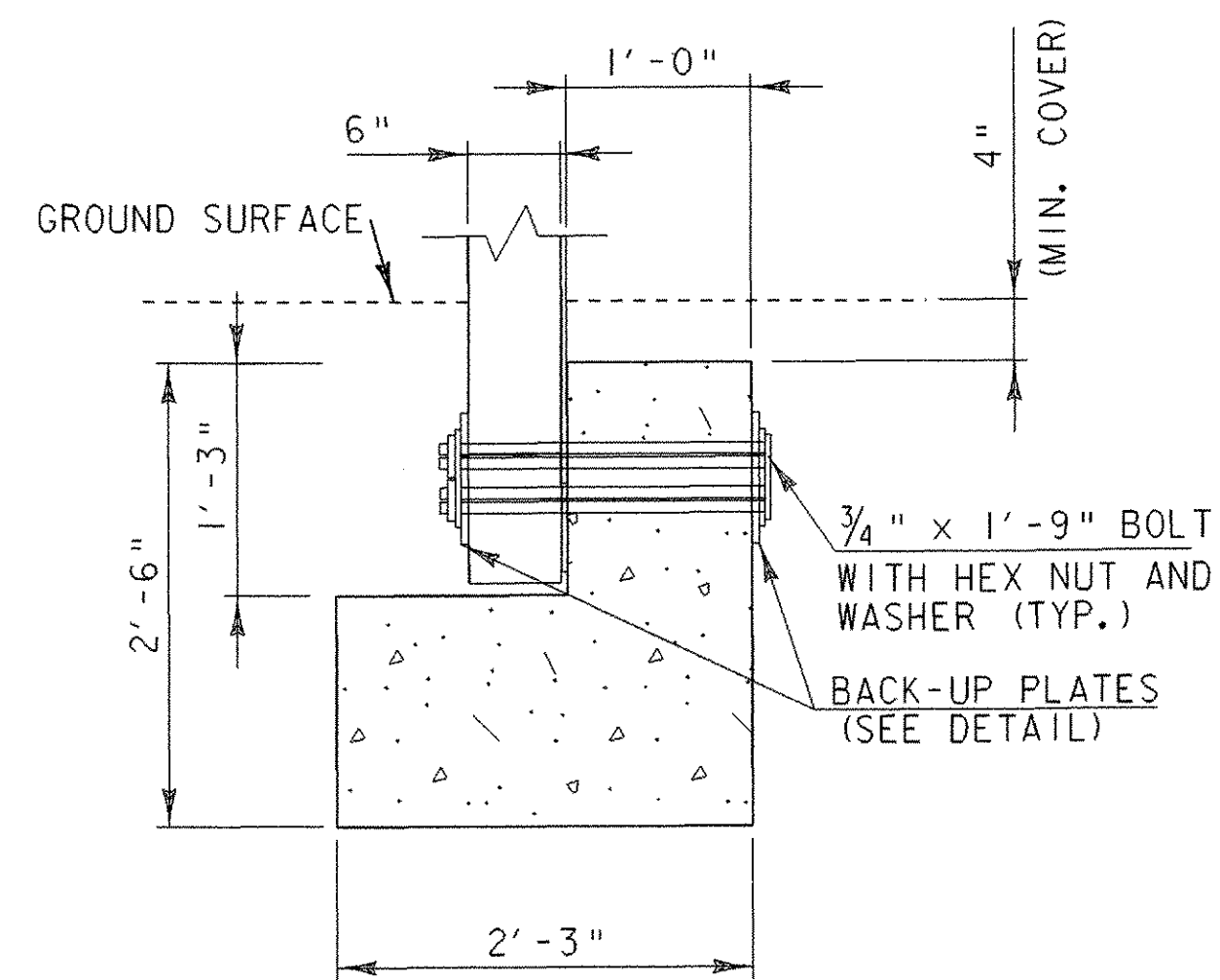
TIMBER GUARD RAIL DETAIL A



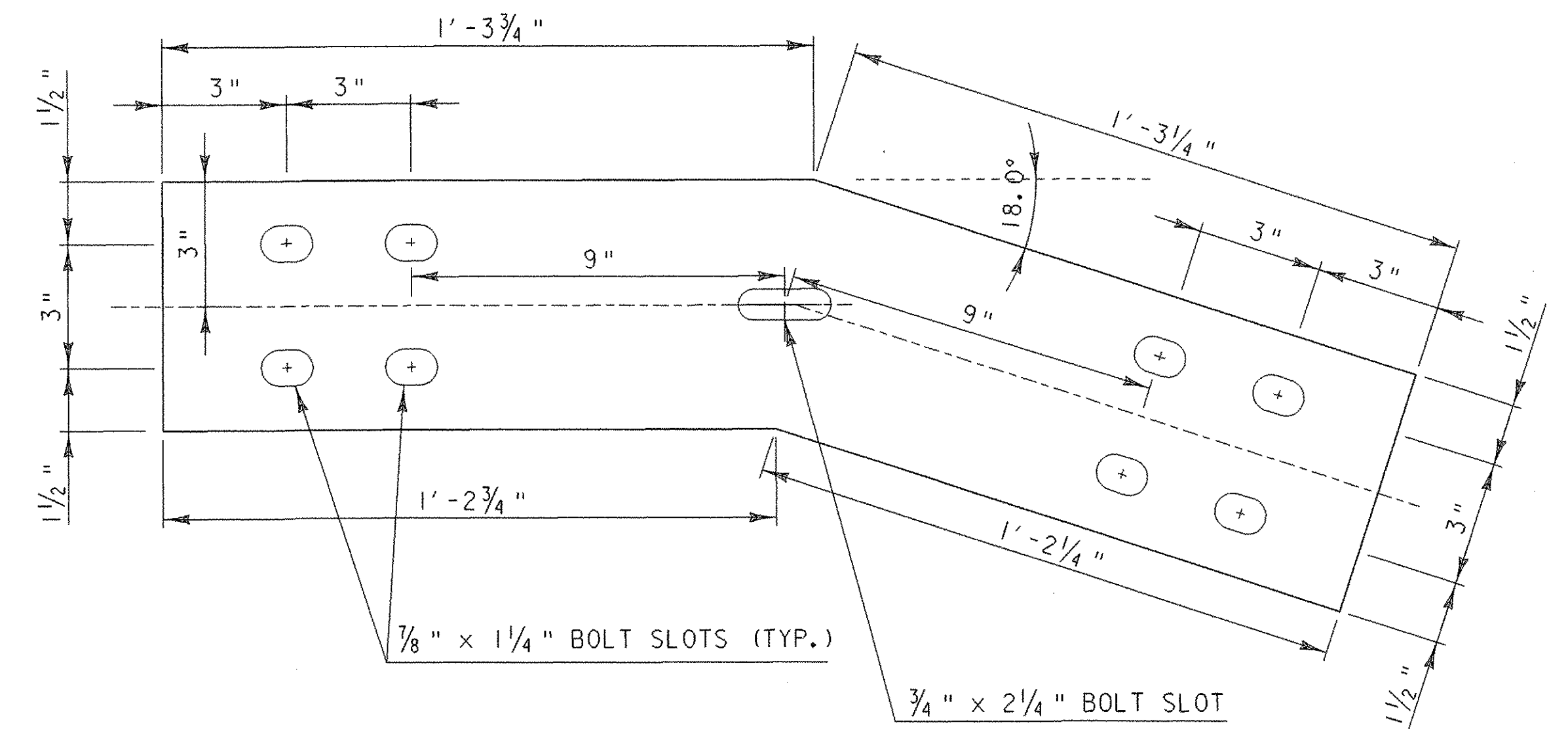
TIMBER GUARD RAIL DETAIL B



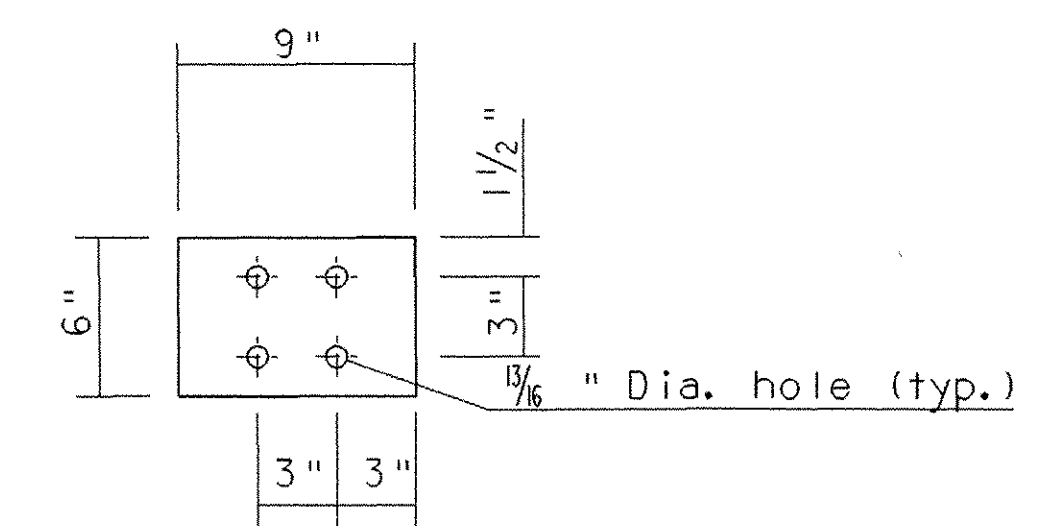
ANCHOR VIEW A



ANCHOR SECTION A-A



STEEL SPLICE PLATE DETAIL A



BACK-UP PLATE DETAIL  
6" x 1/2" x 9"

Notes:

1. See sheet 39, Steel-Backed Timber Guardrail Details For 10' Post Spacing, for timber, structural steel, and hardware details.
2. On the Type A, blocked-out guardrail, include the blocks in the terminal section, except on the concrete anchor. For the Type B, non-blocked-out guardrail, no blocks are included.
3. Begin the cut flares at the nearest post to a transition point between fill and cut as directed by the Resident Engineer.
4. Extend the flare into the cut until a minimum 1-foot cover is obtained over the guardrail end.

STEEL BACKED TIMBER RAIL ANCHOR DETAILS

PROJECT NAME: THETFORD	PLOT DATE: 27-SEP-2006
PROJECT NUMBER: BHO 1444 (43)	DRAWN BY: G. ROKES
FILE NAME: Structures\s03j036abt.dgn	DESIGNED BY: M. EVANS-MONGEON
PROJECT LEADER: M. EVANS-MONGEON	CHECKED BY: S. SCRIBNER
IPARM: s03j036tr2.l	SHEET 44 OF 60

ALL DETAILS ON THIS SHEET ARE NTS