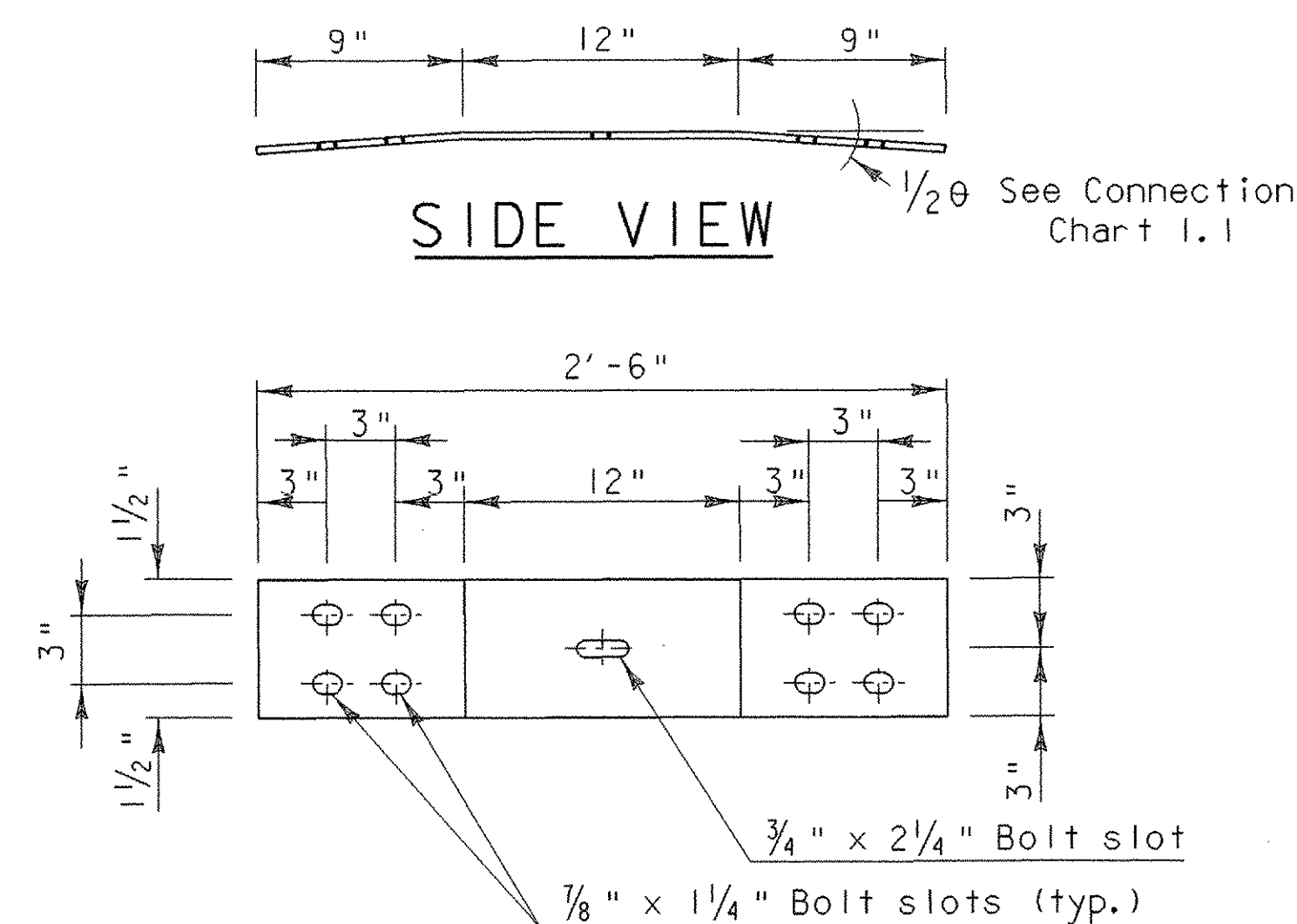
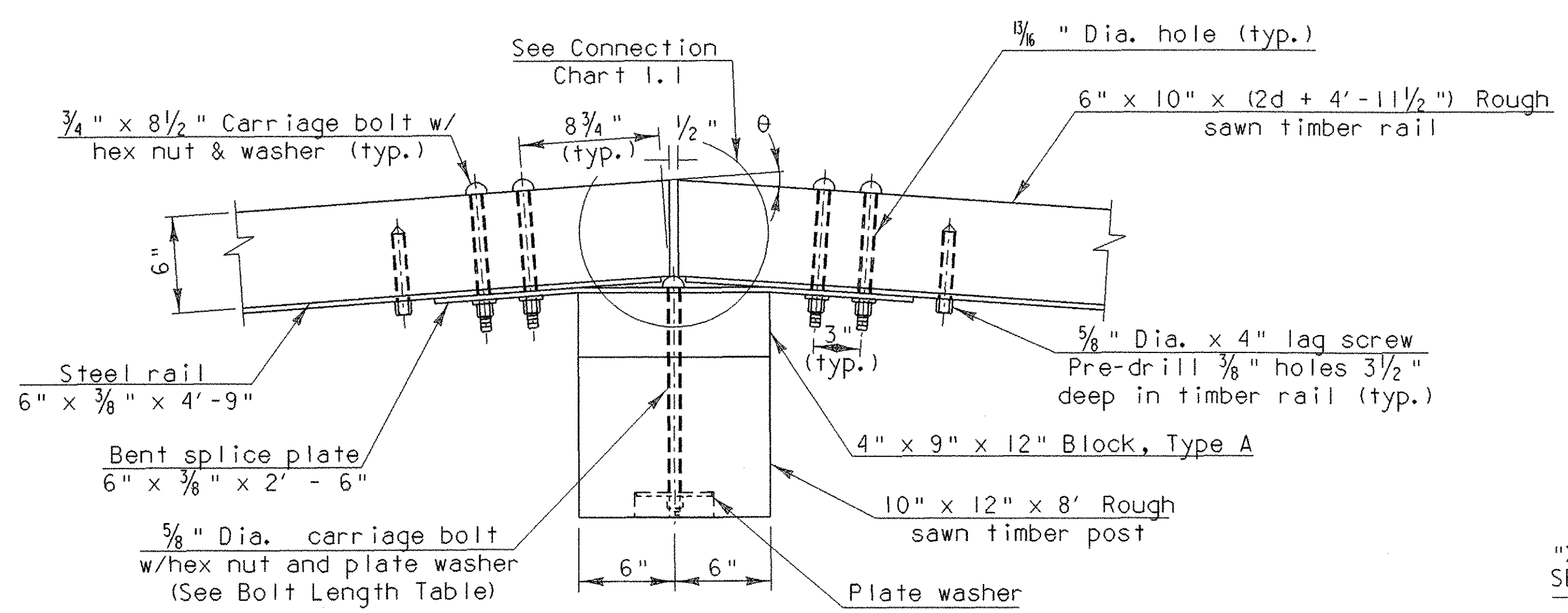


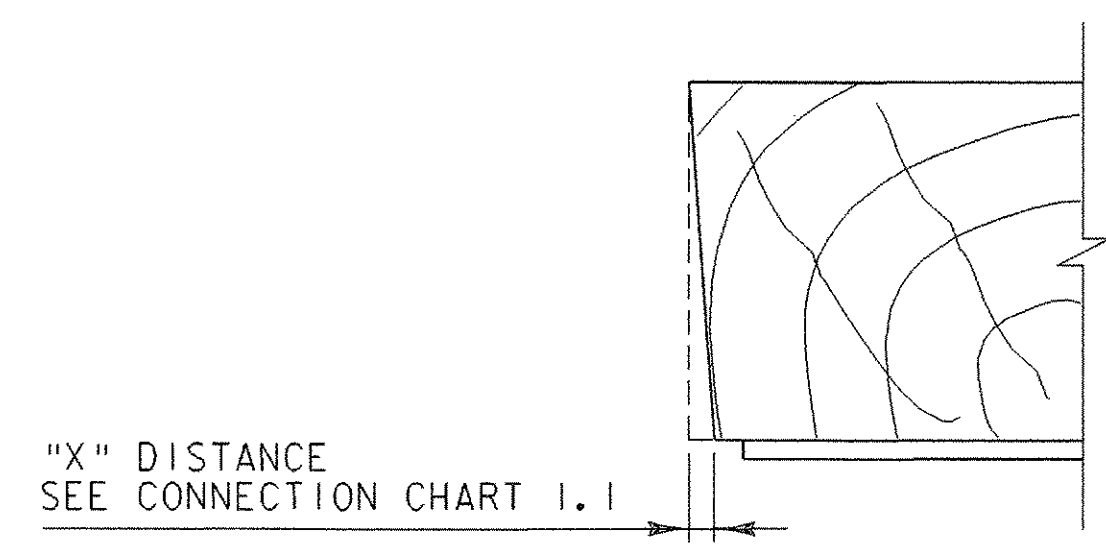
STEEL RAIL DETAIL
6" x 3/8" x 4'-9"



BENT SPLICE PLATE DETAIL
6" x 3/8" x 2'-6"



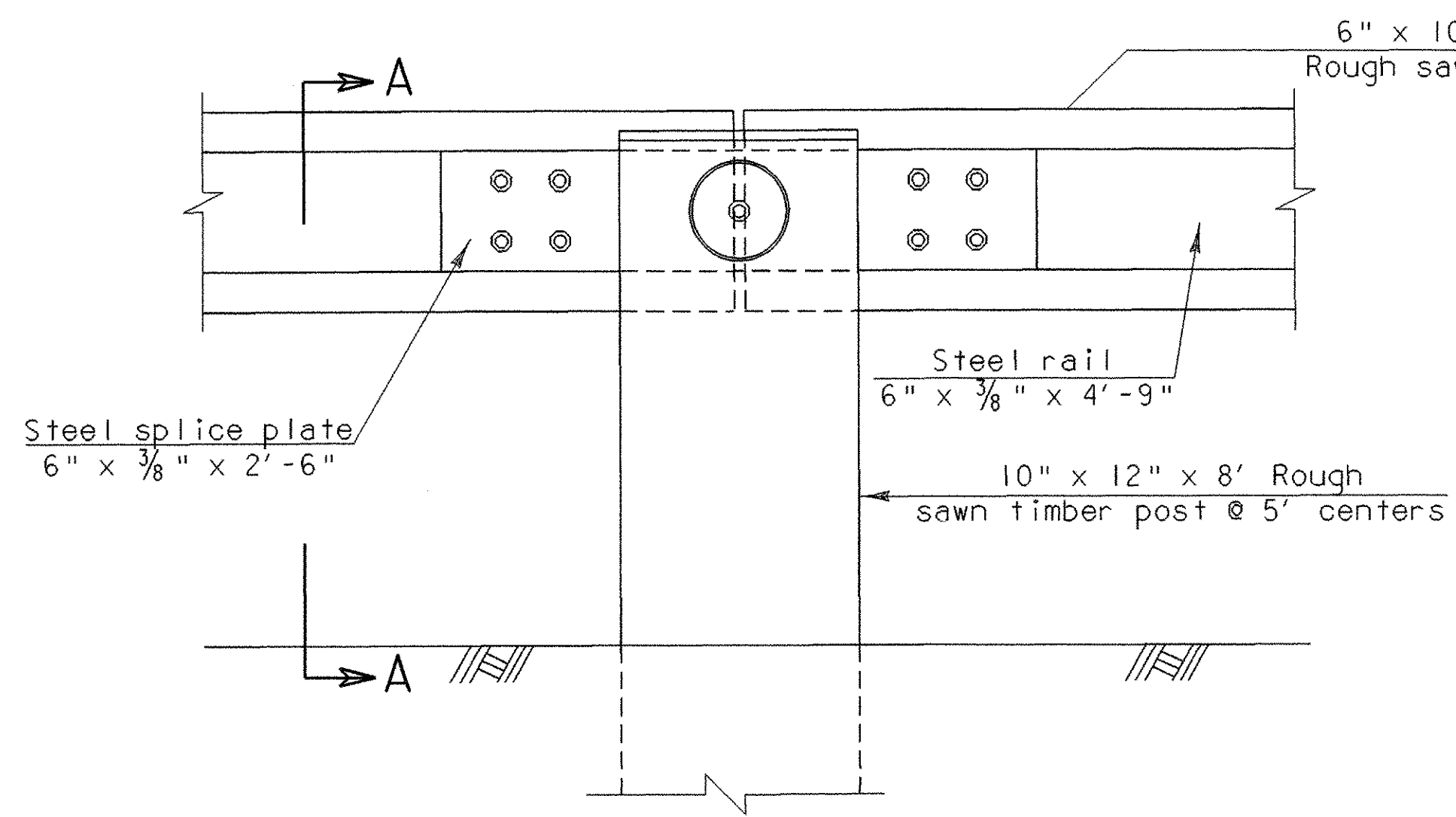
POST CONNECTION PLAN A-G



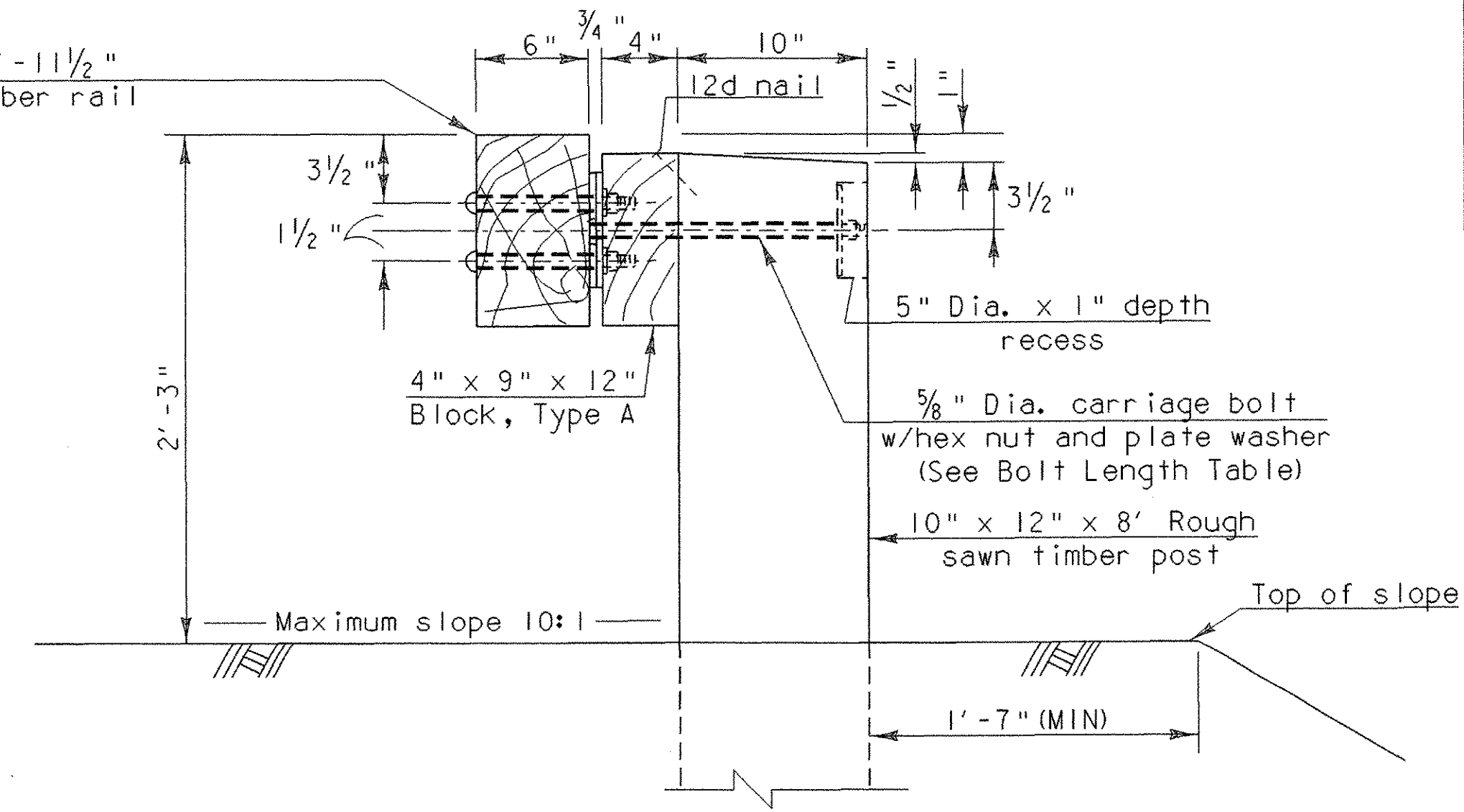
CUTS ON TIMBER RAIL ENDS AT ANGLED CONNECTIONS

CONNECTION LOCATION / TYPE	∅	1/2 ∅	"X" DISTANCE
A	8.7°	4.35°	1/2"
B	11.0°	5.5°	5/8"
C	9.0°	4.50°	1/2"
D	9.0°	4.5°	1/2"
E	8.0°	4.0°	3/8"
F	10.6°	5.3°	5/8"
G	5.0°	2.5°	1/4"

CONNECTION CHART 1.1



POST CONNECTION ELEVATION



SECTION A-A

ALL DETAILS ON THIS SHEET ARE NTS

STEEL BACKED TIMBER RAIL ANGLED SPLICE PLATE DETAILS

PROJECT NAME: THETFORD	PLOT DATE: 27-SEP-2006
PROJECT NUMBER: BHO 1444 (43)	DRAWN BY: G. ROKES
FILE NAME: Structures\s03j036abt.dgn	CHECKED BY: S. SCRIBNER
PROJECT LEADER: M. EVANS-MONGEON	SHEET 43 OF 60
DESIGNED BY: M. EVANS-MONGEON	
IPARM: s03j036tr1.1	