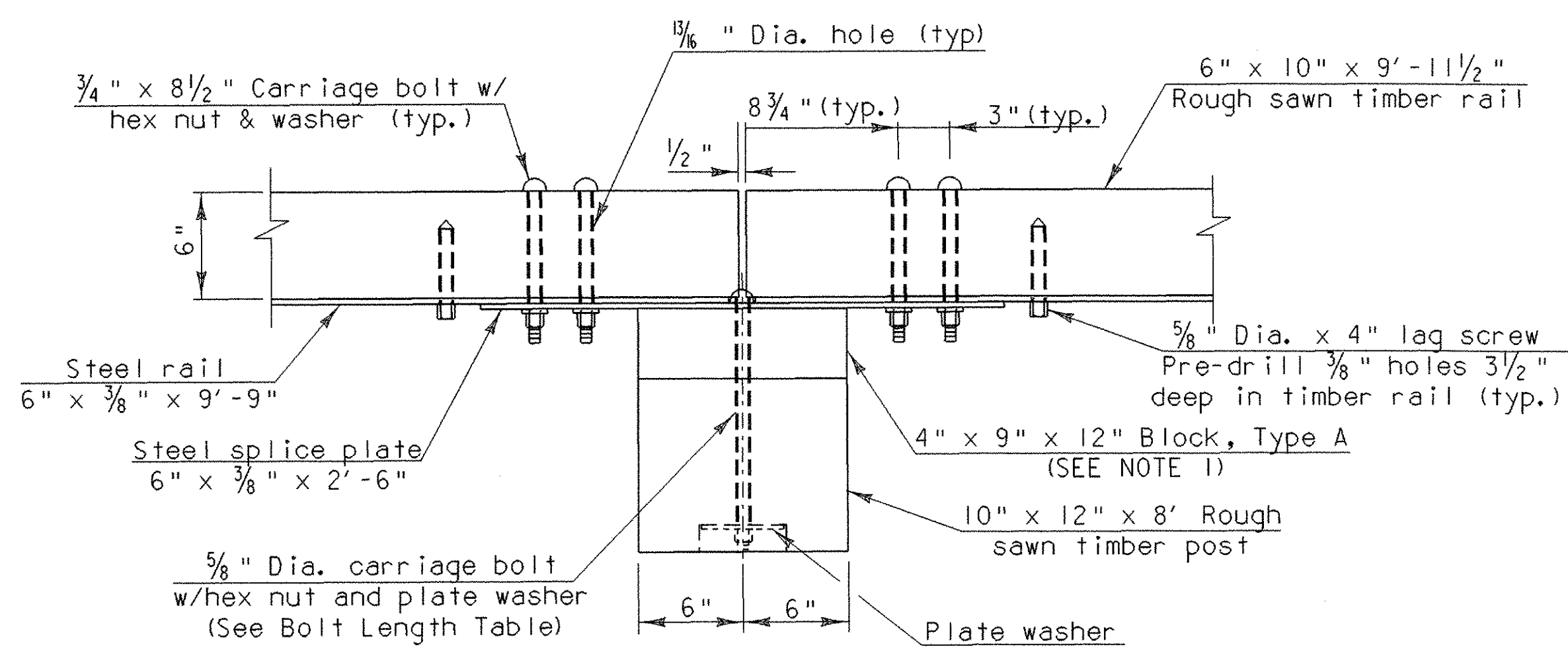
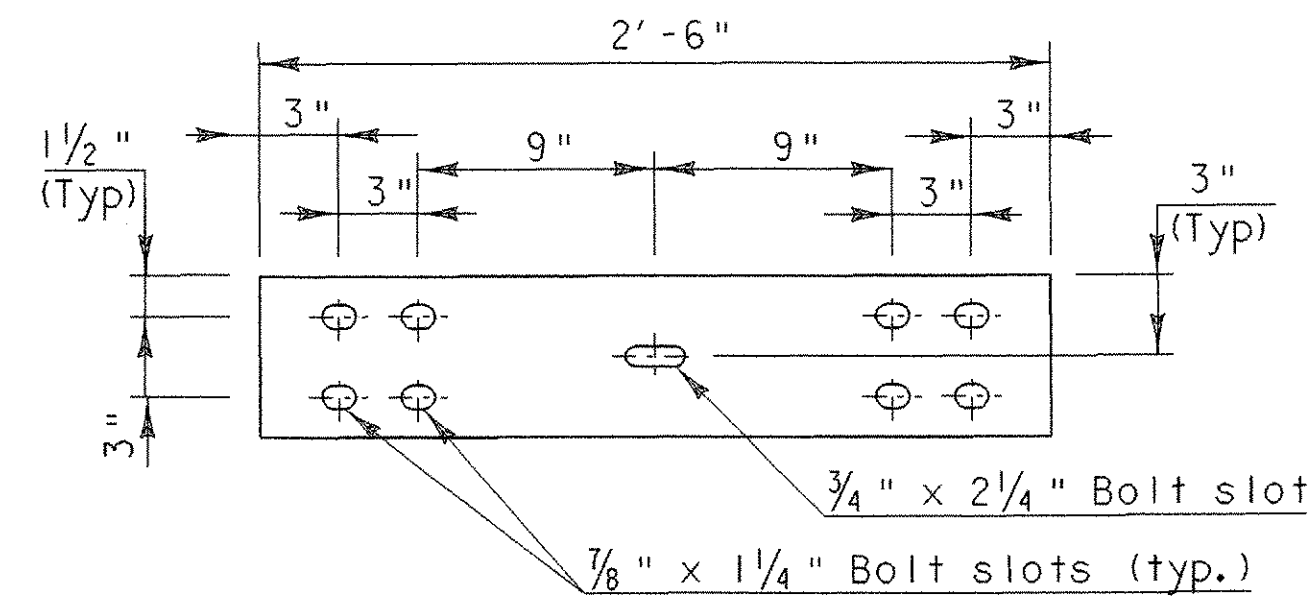


STEEL RAIL DETAIL
6" x 3/8" x 9'-9"



POST CONNECTION PLAN 180°



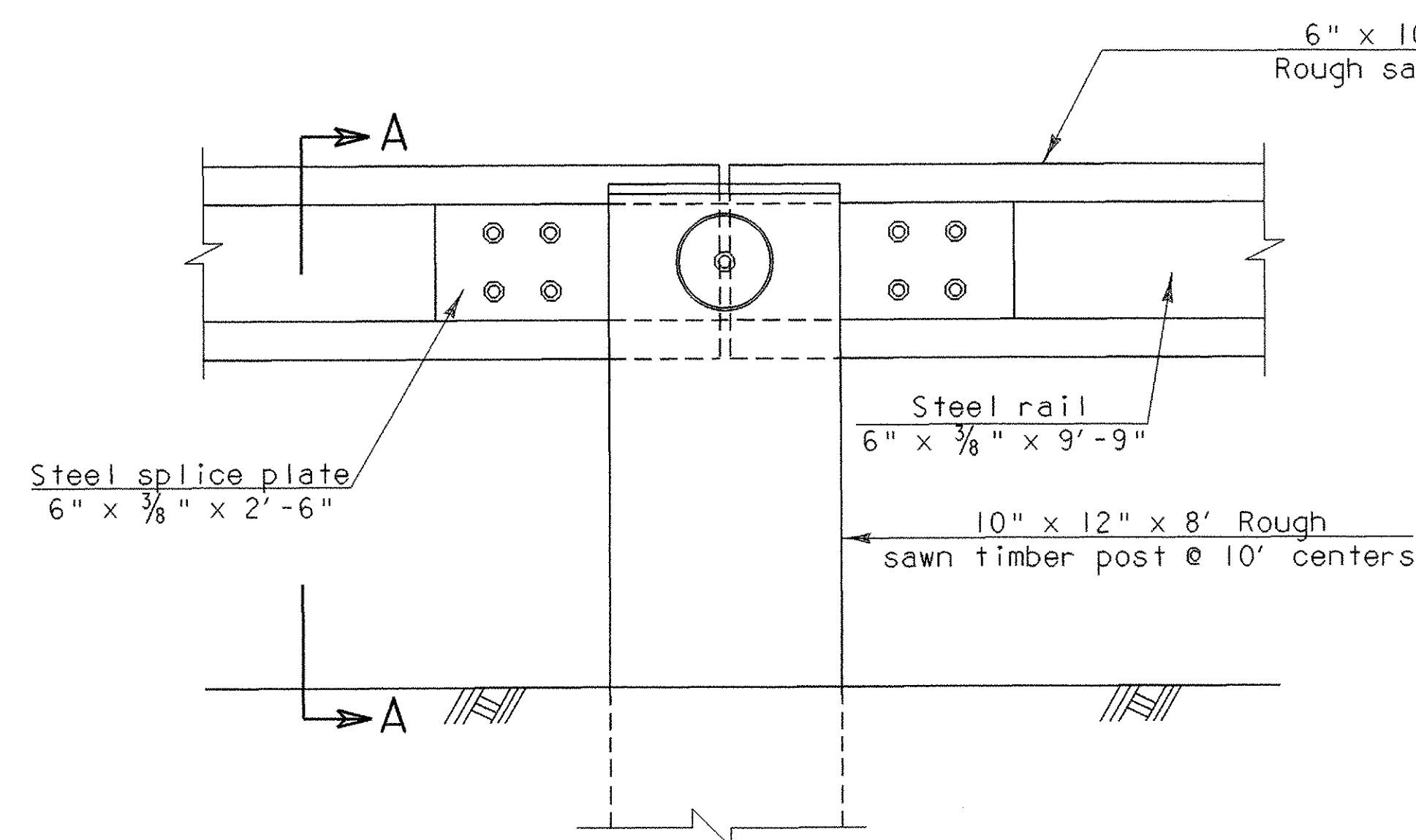
STEEL SPLICE PLATE DETAIL
6" x 3/8" x 2'-6"

STEEL BACKED TIMBER GUARDRAIL NOTES:

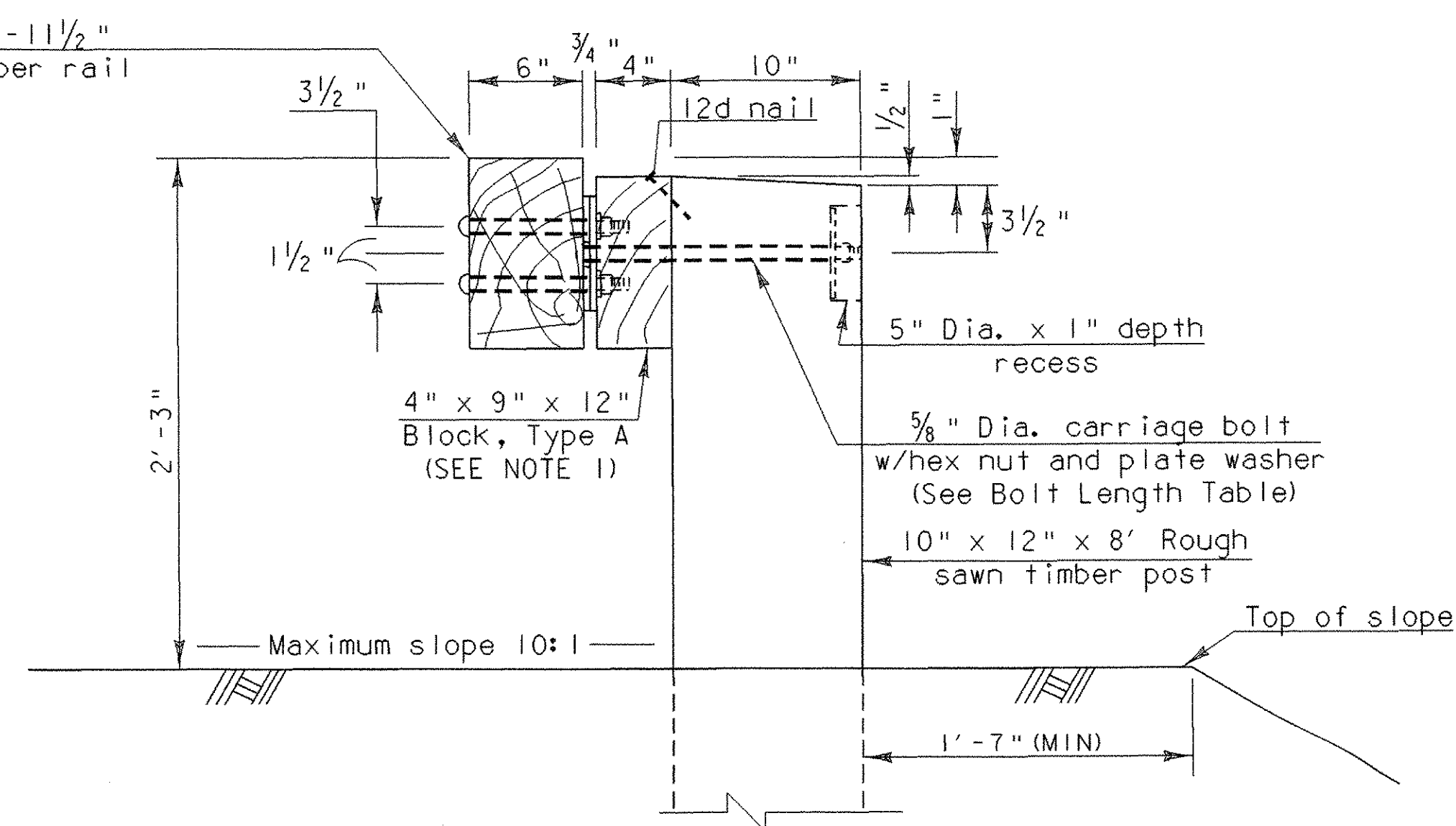
1. RAILING SHALL BE THE TYPE A BLOCK-OUT SYSTEM
2. THE STEEL BACKED TIMBER GUARDRAIL SHALL BE PAID FOR UNDER THE ITEM 621.15 "PLANK RAIL" (MOD. - STEEL BACKED TIMBER RAIL). THE QUANTITY MEASURED FOR PAYMENT SHALL BE ALONG THE FACE OF THE RAIL INCLUDING TERMINAL SECTIONS. THE POST SPACING SHALL BE AS SHOWN ON SHEET 39.
3. THE POSTS AND THE TIMBER RAIL ELEMENTS SHALL CONFORM TO VAOT STANDARD SPECIFICATIONS SECTION 728.01 AND 728.02. IN ADDITION ALL TIMBER USED IN THE RAIL SHALL HAVE A MINIMUM ALLOWABLE BENDING STRESS OF 1450 PSI.
4. THE STEEL RAILS AND SPLICE PLATES SHALL CONFORM TO AASHTO M 222M/M 222 (WEATHERING STEEL).
5. ALL BOLTS AND LAG SCREWS SHALL CONFORM TO ASTM A 307 GR. A. ALL WASHERS SHALL CONFORM TO ASTM F 844. ALL NUTS SHALL CONFORM TO ASTM A 563. ALL FASTENER HARDWARE SHALL BE GALVANIZED ACCORDING TO AASHTO M232.
6. IF AN IMPENETRABLE HOLE IS ENCOUNTERED WHILE PLACING POSTS, ENLARGE THE HOLE TO PROVIDE NOT LESS THAN 6 INCHES CLEARANCE ON ALL SIDES, AND TO A MINIMUM DEPTH OF 2'-6". SET THE POST IN CONCRETE TO WITHIN 6 INCHES OF THE TOP OF THE HOLE. BACKFILL AND COMPACT THE REMAINING 6 INCHES WITH AN ACCEPTABLE MATERIAL.
7. DRIVE POSTS INTO PILOT HOLES THAT ARE PUNCHED OR DRILLED. THE DIMENSIONS OF THE PILOT HOLE SHALL NOT EXCEED THE DIMENSIONS OF THE POST BY MORE THAN 1 INCH. SET THE POSTS PLUMB, BACKFILL AND COMPACT.
8. FIELD CUT TIMBER RAILS TO PRODUCE A CLOSE FIT AT ALL JOINTS. TREAT FIELD CUTS WITH 2 COATS OF CHROMATED COPPER ARSENATE.
9. WHERE CONCRETE ANCHORS ARE INSTALLED IN THE TERMINAL SECTIONS, DO NOT CONNECT THE GUARDRAIL TO THE CAST IN PLACE ANCHORS UNTIL THE CONCRETE HAS CURED 7 DAYS.

Type A (Block-out)	Type B (No Block-out)
1'-3"	11"

**BOLT LENGTHS
FOR RAIL/POST CONNECTION**



POST CONNECTION ELEVATION



SECTION A-A

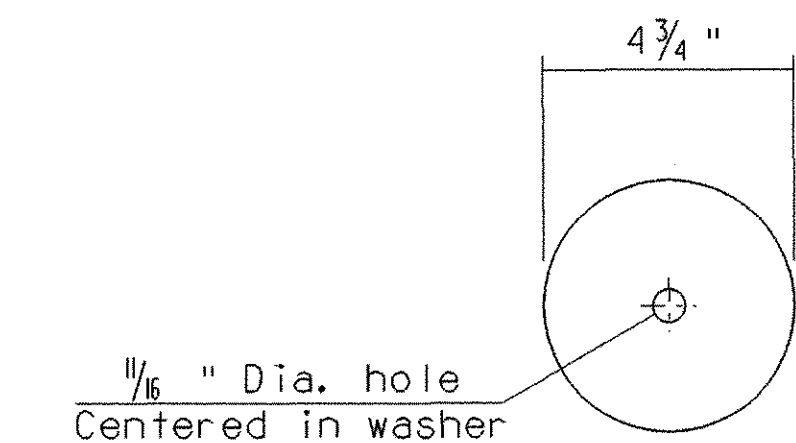


PLATE WASHER DETAIL
4 3/4" Dia. x 1/4"

**STEEL BACKED TIMBER RAIL
STRAIGHT SPLICE PLATE DETAILS**

PROJECT NAME: THETFORD	PLOT DATE: 27-SEP-2006
PROJECT NUMBER: BHO 1444 (43)	DRAWN BY: G. ROKES
FILE NAME: Structures\s03j036abt.dgn	DESIGNED BY: M. EVANS-MONGEON
PROJECT LEADER: M. EVANS-MONGEON	CHECKED BY: S. SCRIBNER
IPARM: s03j036tr.i	SHEET 42 OF 60

ALL DETAILS ON THIS SHEET ARE NTS