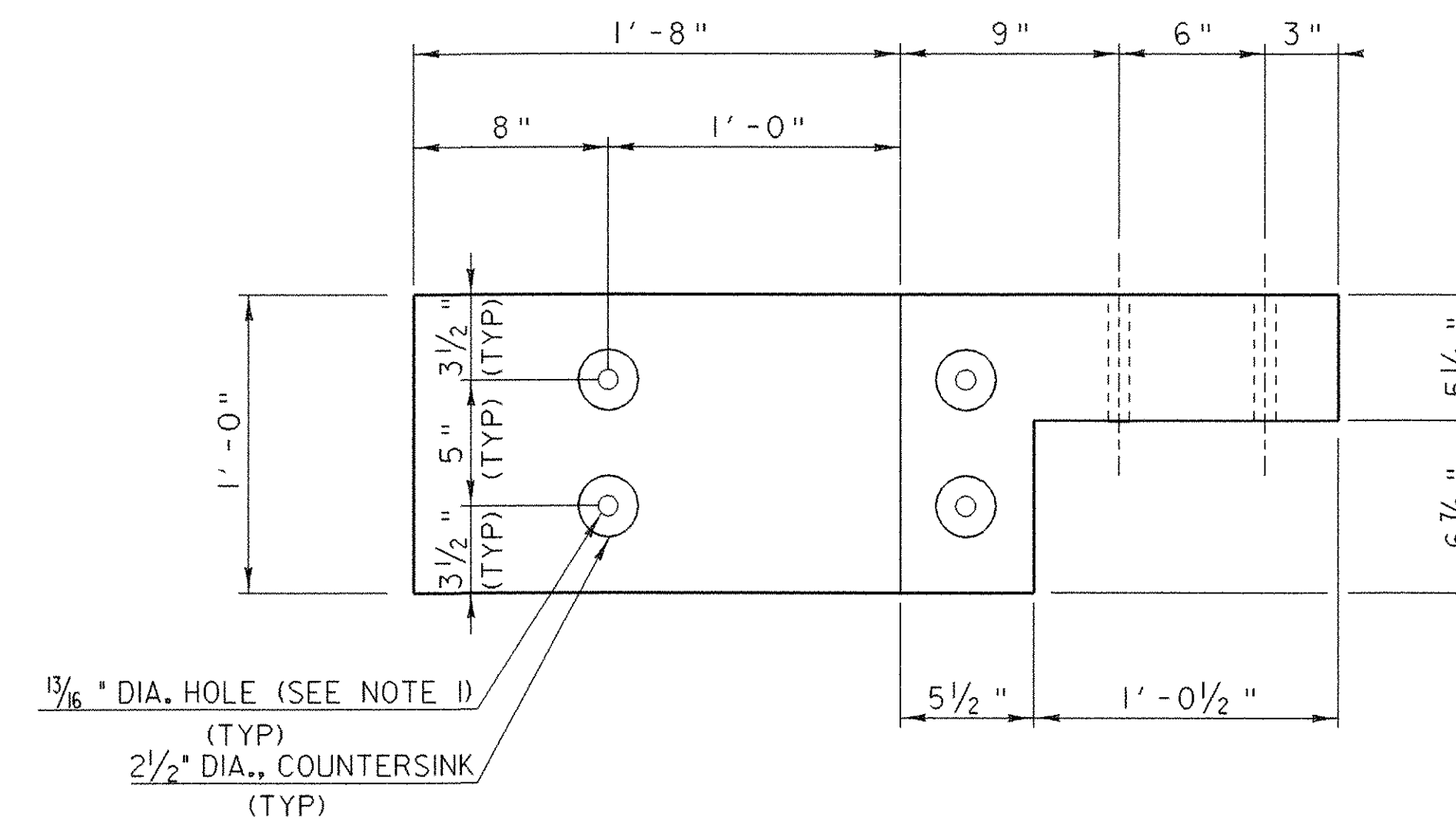


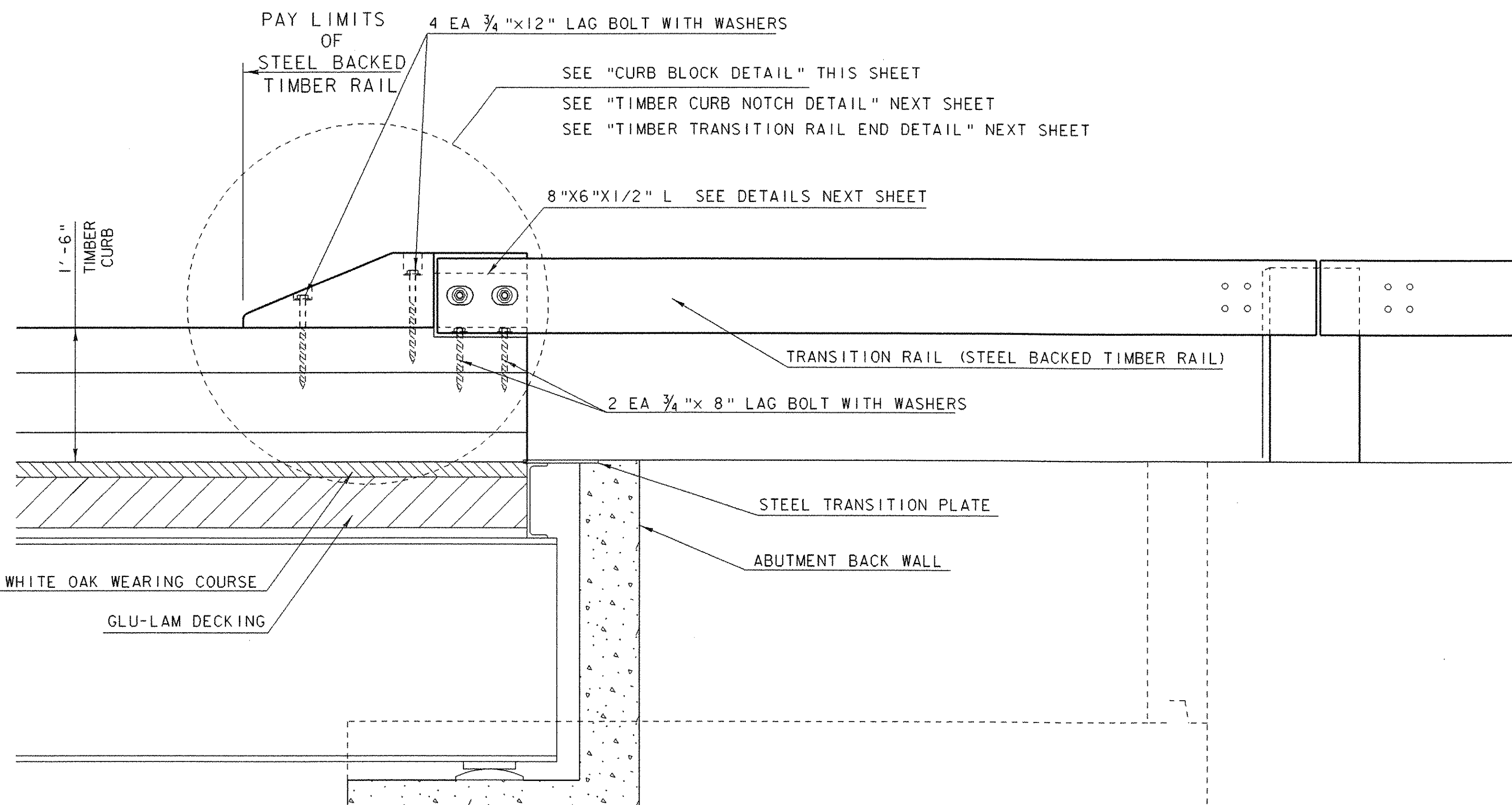
TRANSITION RAIL TO DECK CURB PLAN VIEW

SCALE 1"=1'



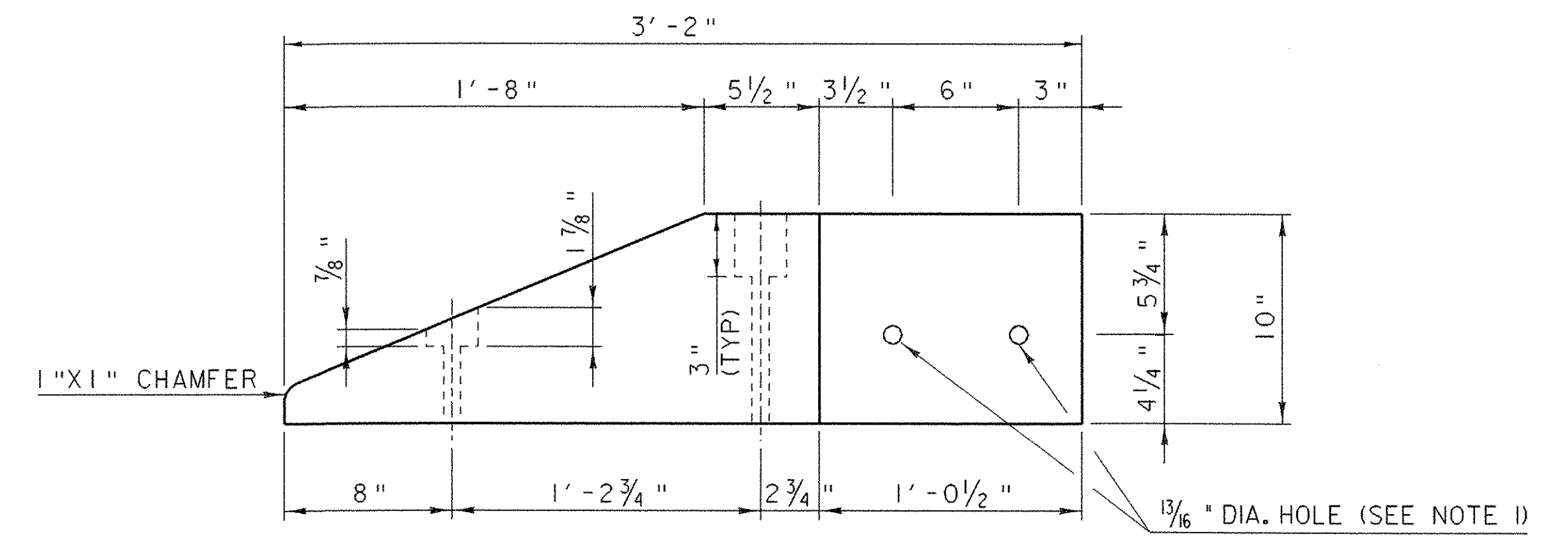
CURB BLOCK PLAN DETAIL

SCALE 2"= 1'-0"



TRANSITION RAIL TO DECK CURB ELEVATION VIEW

SCALE 1"=1'



CURB BLOCK ELEVATION DETAIL

SCALE 2"=1'-0"

CURB BLOCK DETAILS

NOTE:
PILOT HOLES ARE TO BE DRILLED INTO THE TIMBER CURB FOR ATTACHMENT OF THE CURB BLOCK AND 8"X6"X1/2" L SHAPE. THESE PILOT HOLES WILL BE 1/2" DIAMETER HOLES.

NOTE 1:
ALL INDICATED DRILLED HOLE DIAMETERS OF 3/4" WILL BE 13/16", UNLESS OTHERWISE NOTED.

STEEL BACKED TIMBER TRANSITION RAIL TO TIMBER BRIDGE CURB

PROJECT NAME: THETFORD	PLOT DATE: 24-OCT-2006
PROJECT NUMBER: BHO 1444 (43)	DRAWN BY: G. ROKES
FILE NAME: Structures\s03j036abt.dgn	CHECKED BY: S. SCRIBNER
PROJECT LEADER: M. EVANS-MONGEON	SHEET 40 OF 60
DESIGNED BY: G. ROKES	
IPARM: s03j036gbkl1	

REVISED OCT. 24, 2006