

GPS CONTROL POINTS

HVCTRL # 1

STANDARD DISK STAMPED  
 J. Tucker  
 N = 504695.26  
 E = 1641423.66  
 ELEV. =

TO REACH FROM THE JUNCTION OF VT ROUTE 110 AND VT ROUTE 14 IN SOUTH ROYALTON GO NORTHERLY ALONG VT ROUTE 110 FOR 4.8 MI (7.7 KM) TO A FIELD DRIVE AND THE MARK ON THE LEFT. THE STATION IS LOCATED 41 FT (12.5 M) N 20 W FROM THE CENTER LINE OF VT ROUTE 110, 32 FT (9.8 M) N 80 W OF POLE 40/39, AND 15 FT (4.6 M) N 80 W FROM THE CENTER OF A FIELD DRIVE.

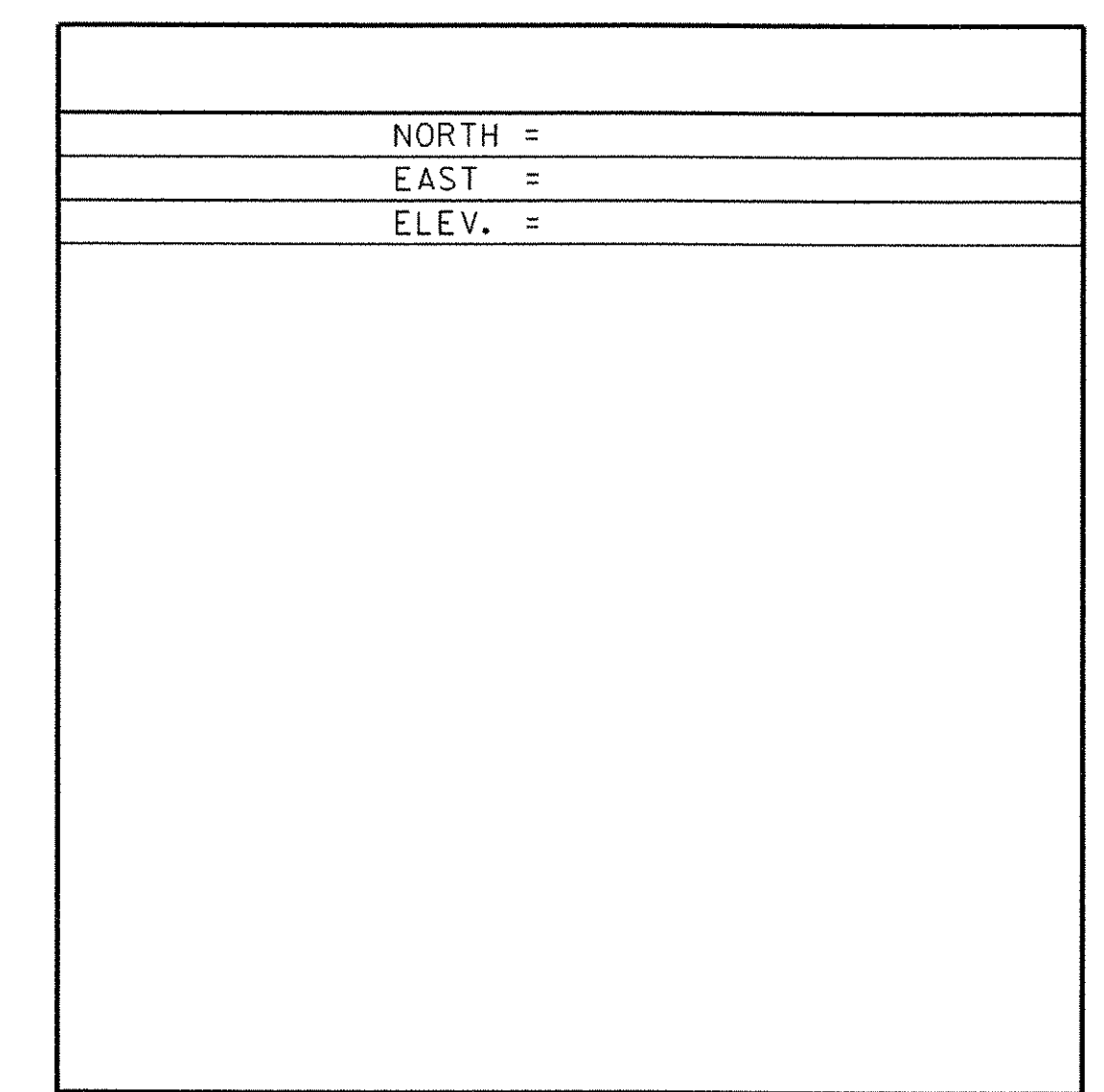
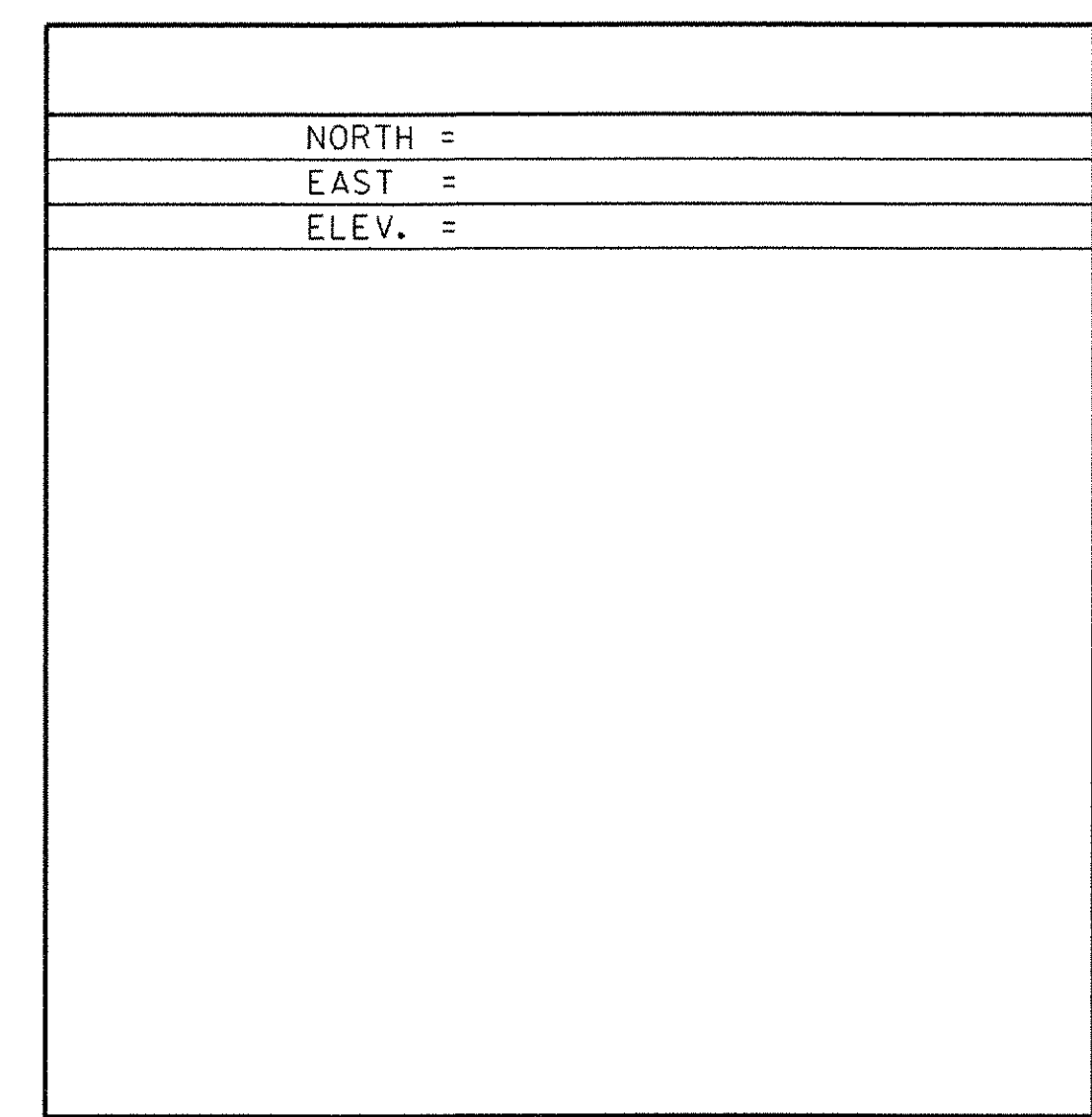
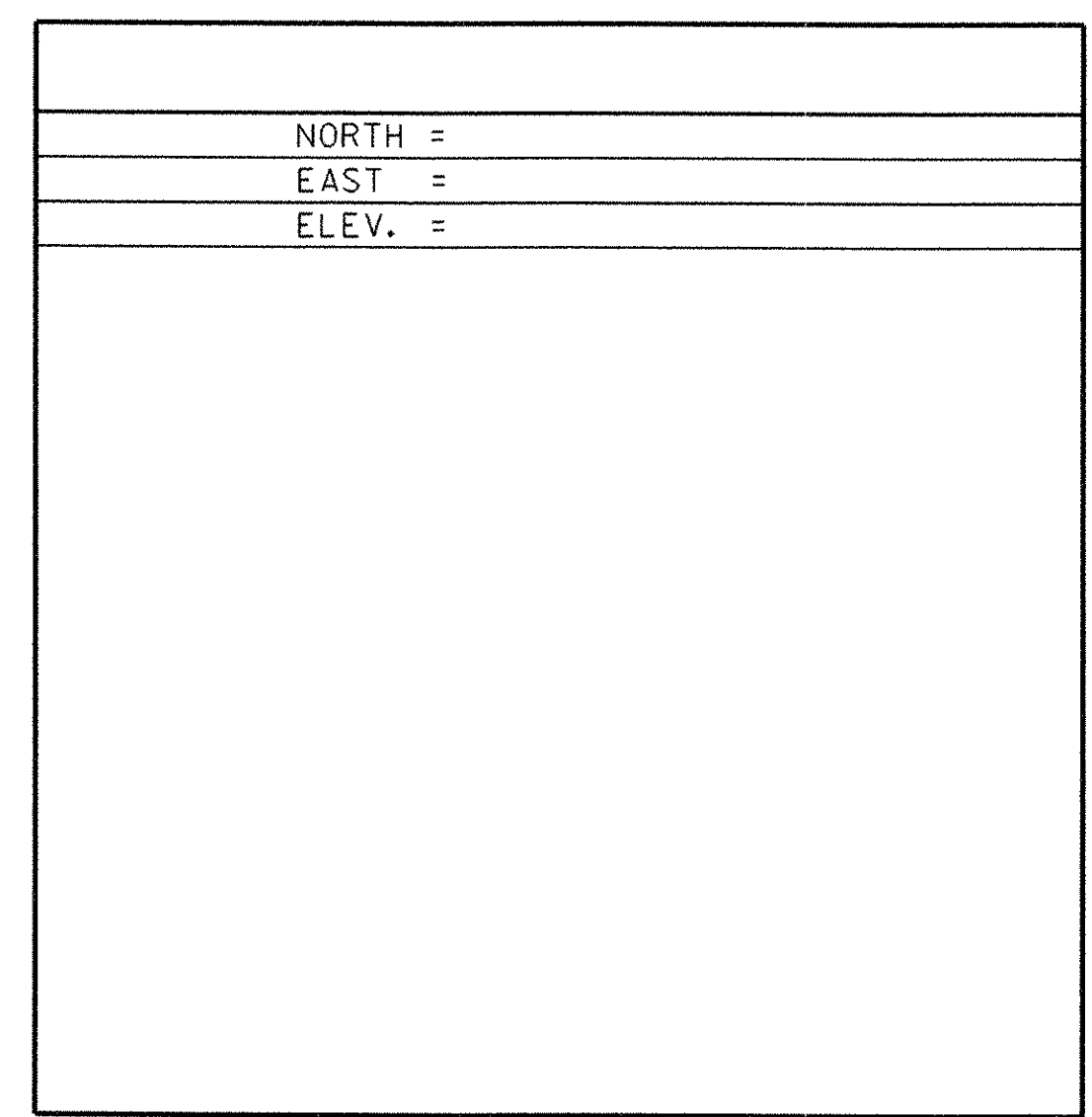
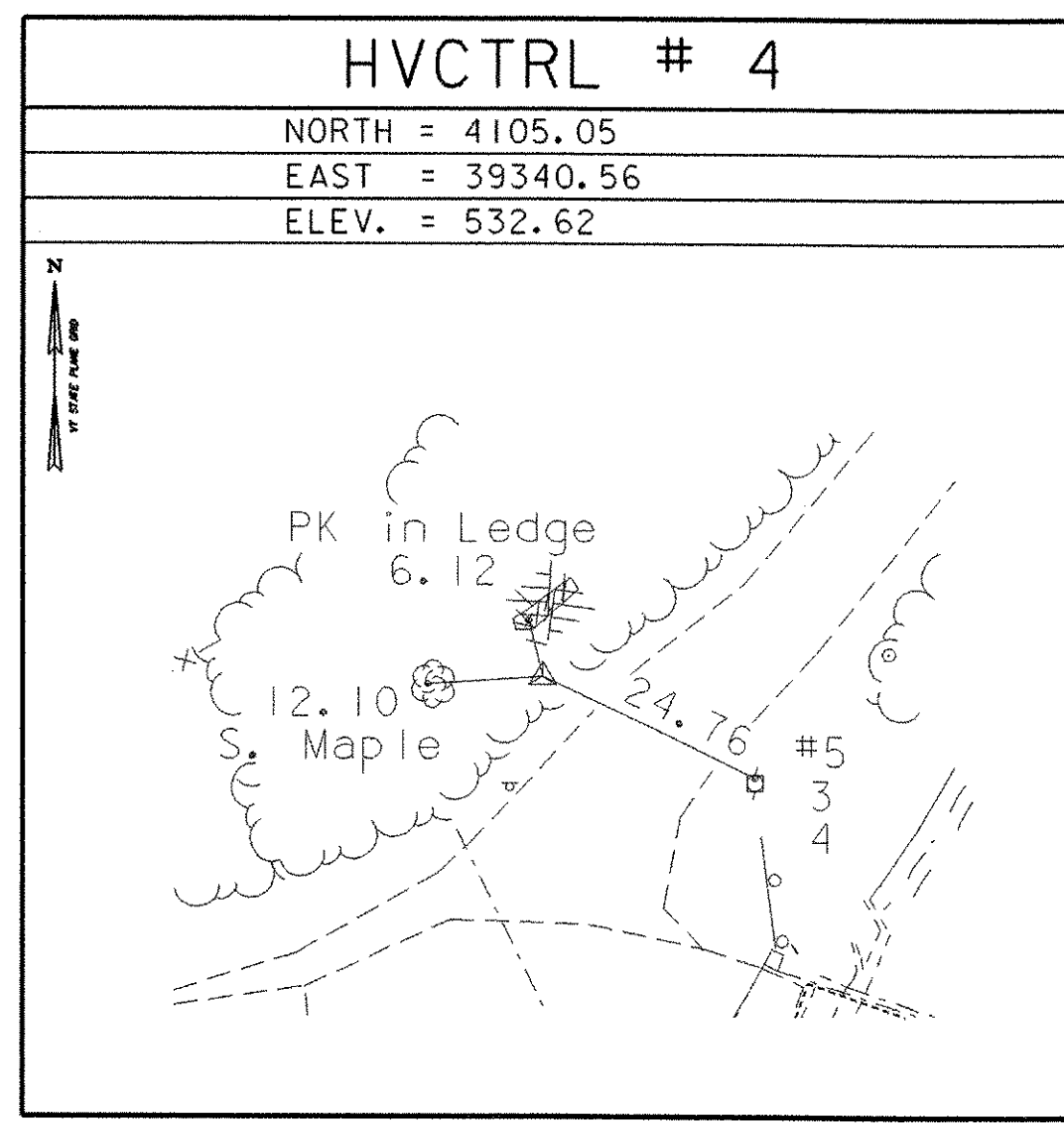
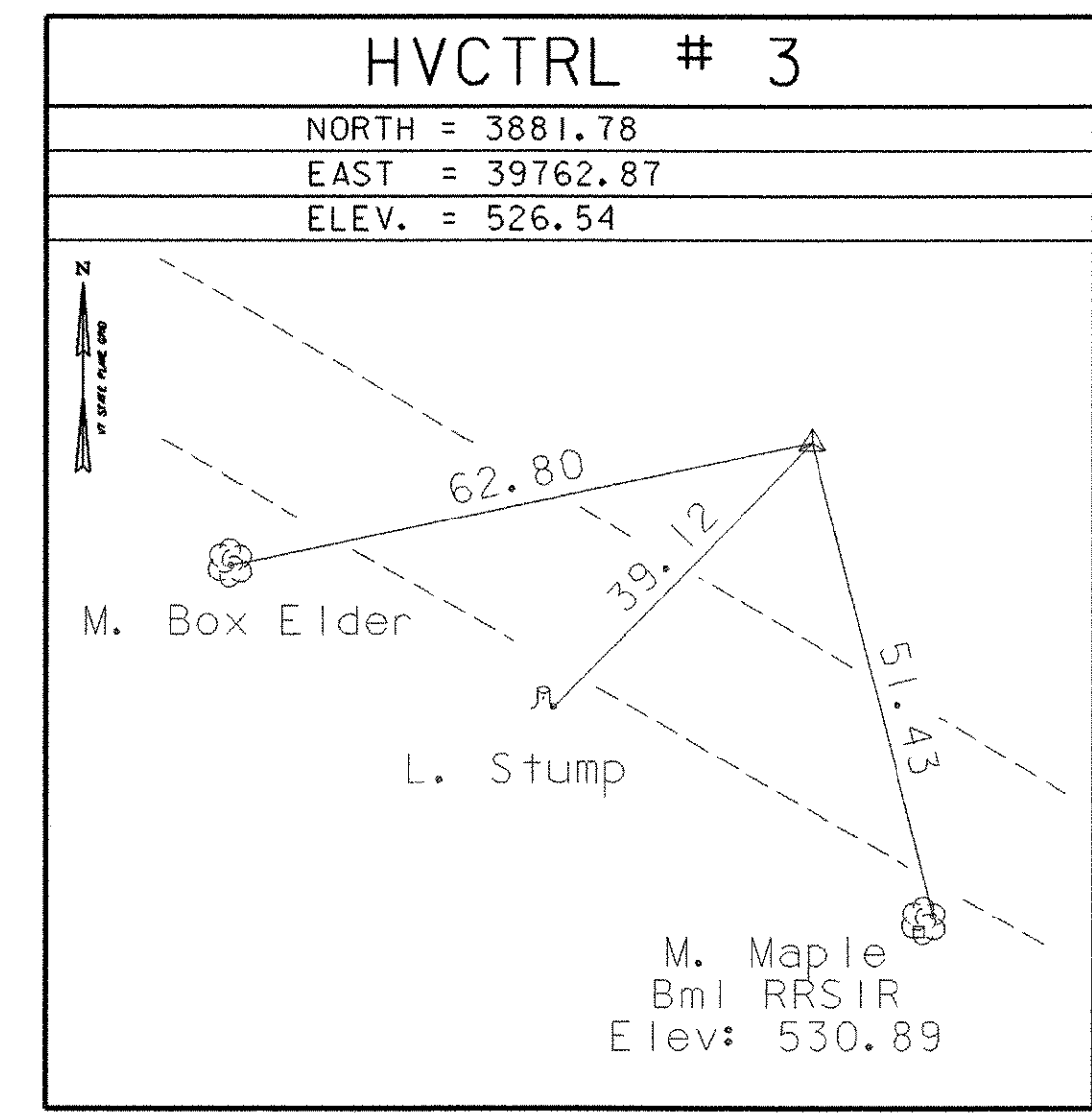
HVCTRL # 2

STANDARD DISK STAMPED  
 USGS M44  
 N = 503771.84  
 E = 1639978.28  
 ELEV. = 543.83

GENERAL LOCATION, TUNBRIDGE, VT. 0.5 MI (0.8 KM) SOUTHWEST OF, 30 FT (9.1 M) SOUTH OF JUNCTION OF ROAD WEST AND TURN IN MAIN ROAD SOUTHWEST, ACROSS ROAD FROM CEMETERY, IN LEDGE.

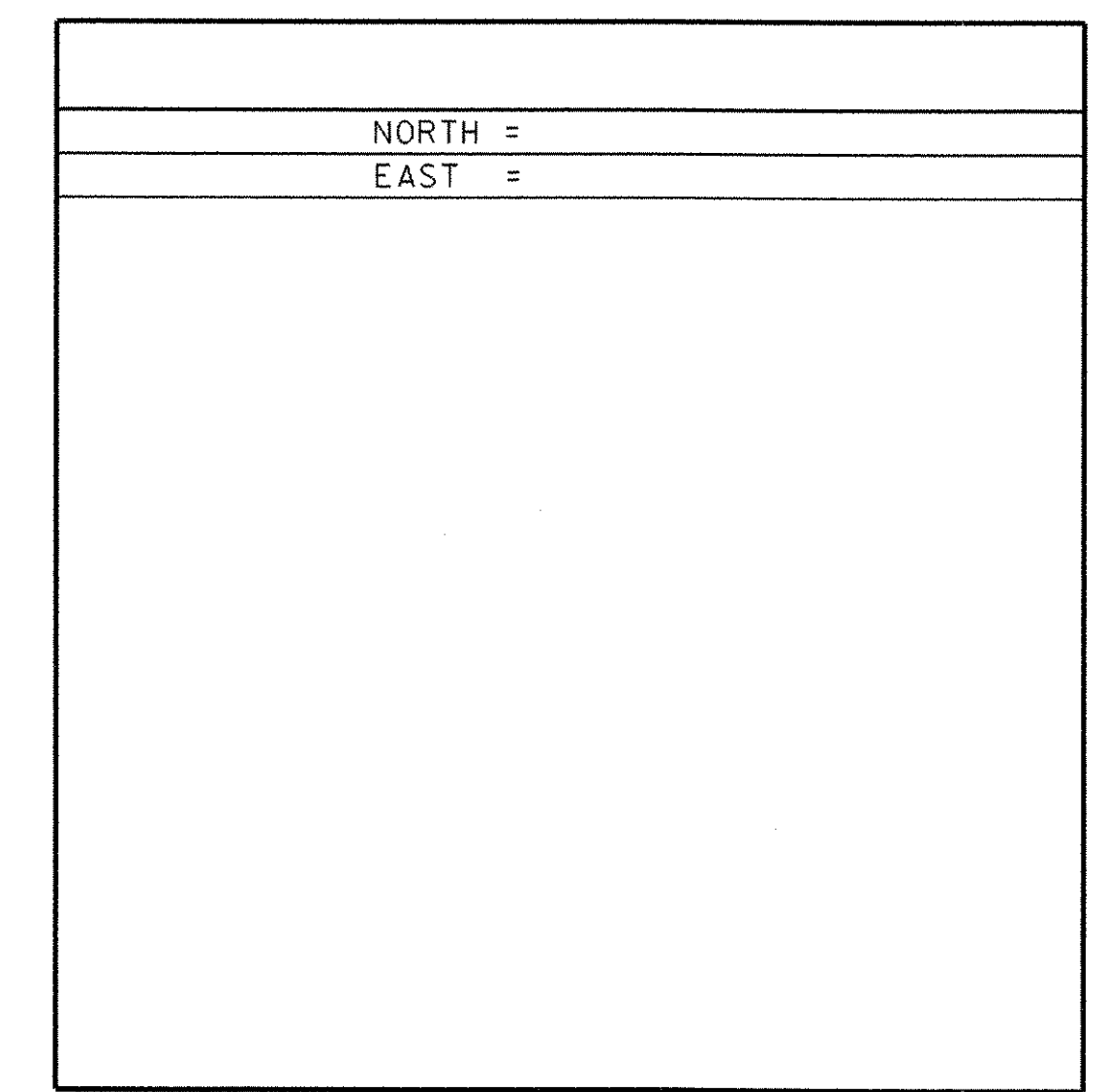
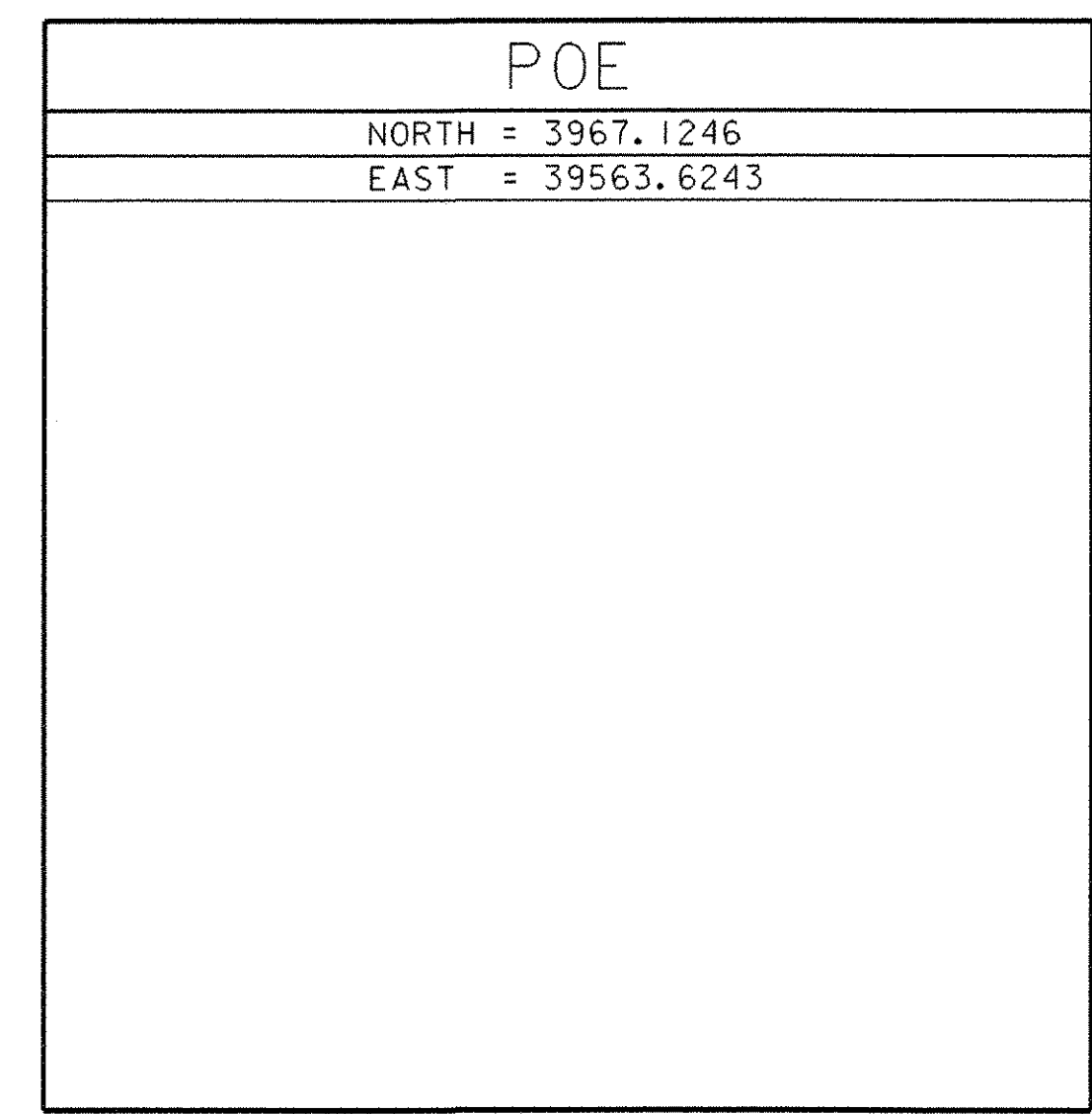
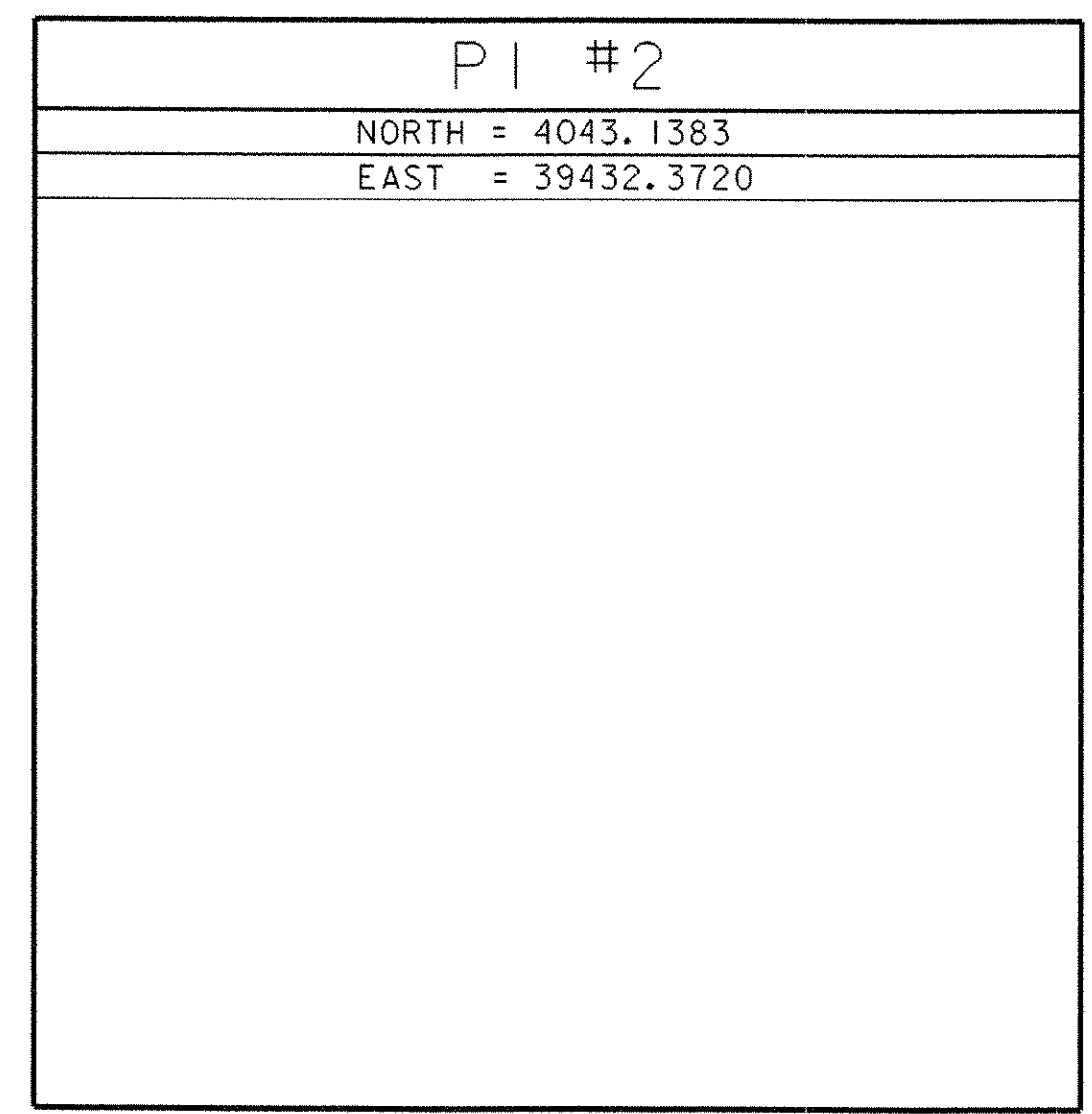
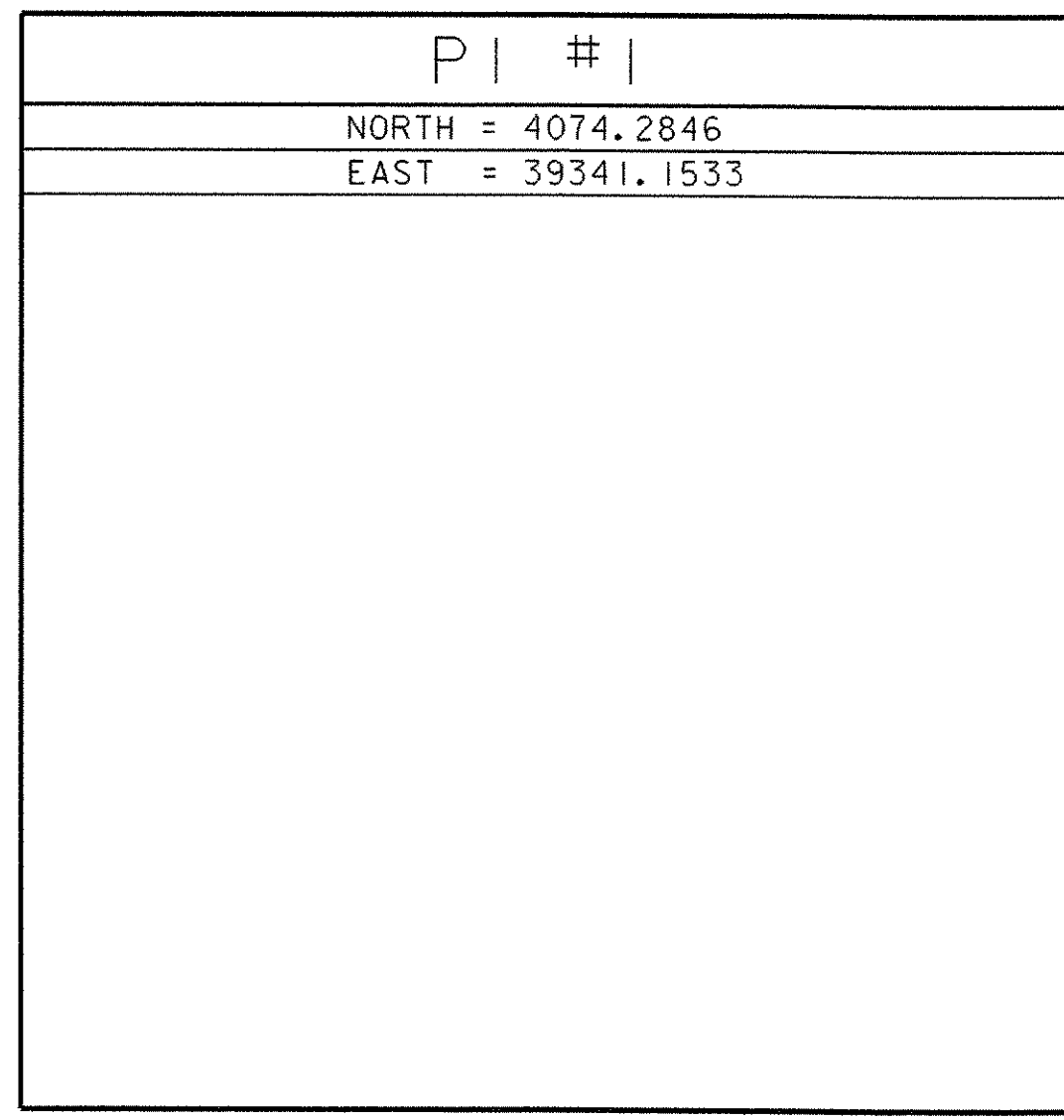
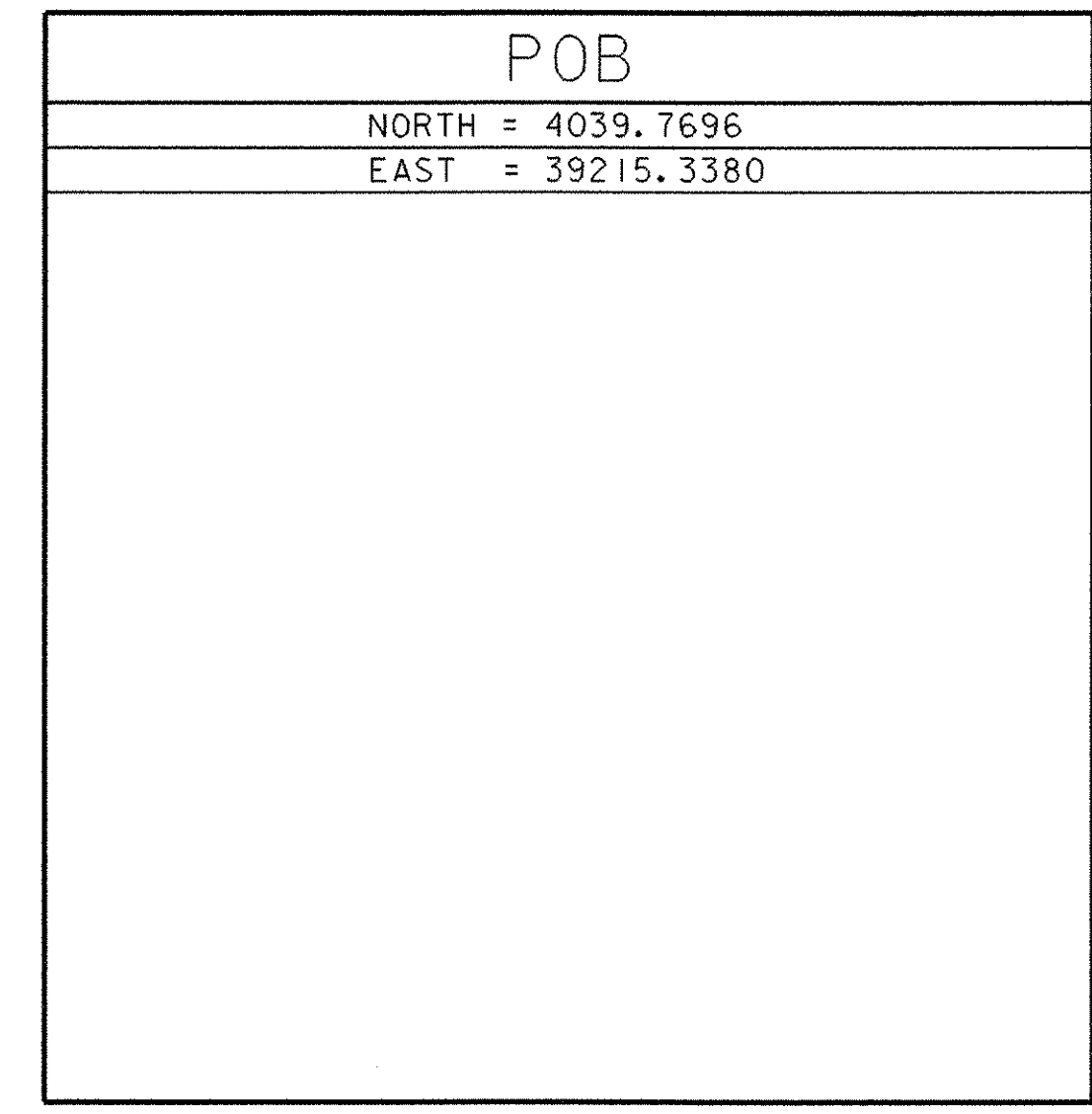
- DESCRIPTION PROVIDED BY VERMONT AGENCY OF TRANSPORTATION GEODETIC SURVEY UNIT
- TO ALLOW THE STATE PLANE COORDINATES TO FIT THE AGENCY DESIGN PLANE, SUBTRACT 500,000 FROM THE NORTHING AND SUBTRACT 1,600,000 FROM THE EASTING

TRAVERSE TIES



• MAIN TRAVERSE COMPLETED 06/08/03 by R. Gilman P.C. & P. Winters

ALIGNMENT TIES



• ALIGNMENT STAKED

DATUM

VERTICAL	NAVD 88
HORIZONTAL	NAD 83/96
ADJUSTMENT	Compass

PROJECT: TUNBRIDGE	PROJECT NO.: BHO 1444 (42)
DESIGN FILE NAME: s03j032/structures/s03j032+1.dgn	PLOT DATE: 25-AUG-2005
IPARM FILE NAME: s03j032+1.i	SURVEY DATE: 06/03
SURVEYED BY: R. GILMAN	DRAWN BY: R. BULLOCK
SQUAD LEADER: C.P. WILLIAMS	SHEET: 5 OF 40
TRAVERSE & GEODETIC CONTROL INFORMATION	