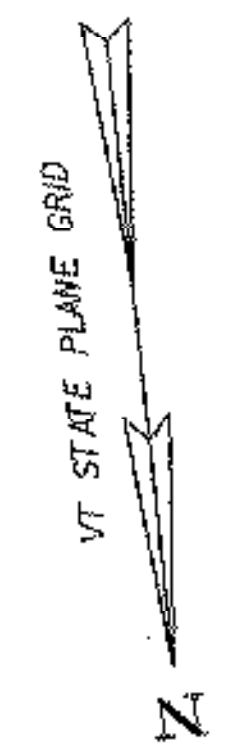
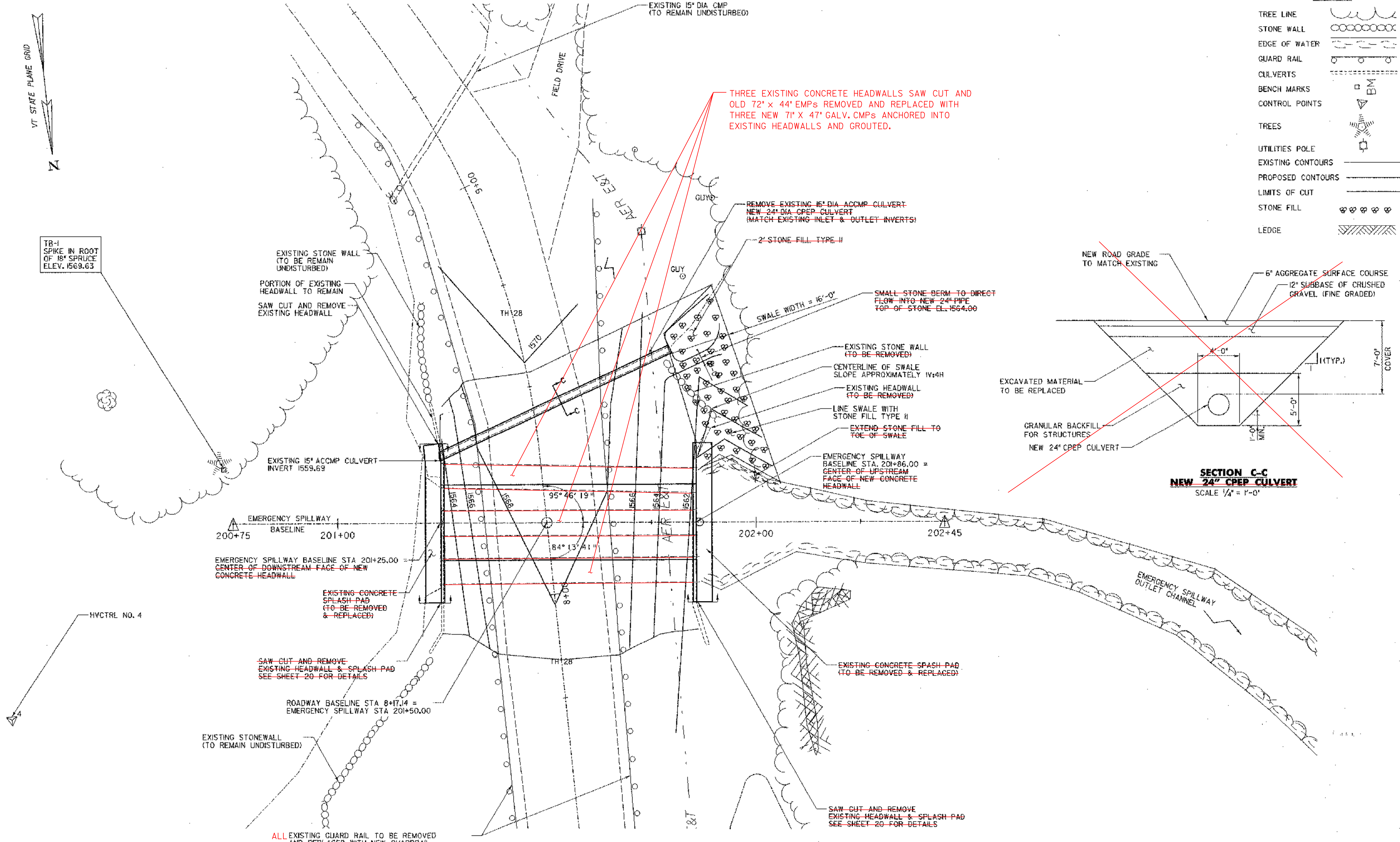


LEGEND

- TREE LINE
- STONE WALL
- EDGE OF WATER
- GUARD RAIL
- CULVERTS
- BENCH MARKS
- CONTROL POINTS
- TREES
- UTILITIES POLE
- EXISTING CONTOURS
- PROPOSED CONTOURS
- LIMITS OF CUT
- STONE FILL
- LEDGE



TB-1 SPIKE IN ROOT OF 18" SPRUCE ELEV. 1569.63



THREE EXISTING CONCRETE HEADWALLS SAW CUT AND OLD 72" x 44" EMPs REMOVED AND REPLACED WITH THREE NEW 71" x 47" GALV. CMPs ANCHORED INTO EXISTING HEADWALLS AND GROUTED.

REMOVE EXISTING 15" DIA. ACCMP CULVERT
NEW 24" DIA. CPEP CULVERT
(MATCH EXISTING INLET & OUTLET INVERTS)

2' STONE FILL TYPE II

SMALL STONE BERM TO DIRECT FLOW INTO NEW 24" PIPE
TOP OF STONE EL. 1564.00

EXISTING STONE WALL (TO BE REMOVED)

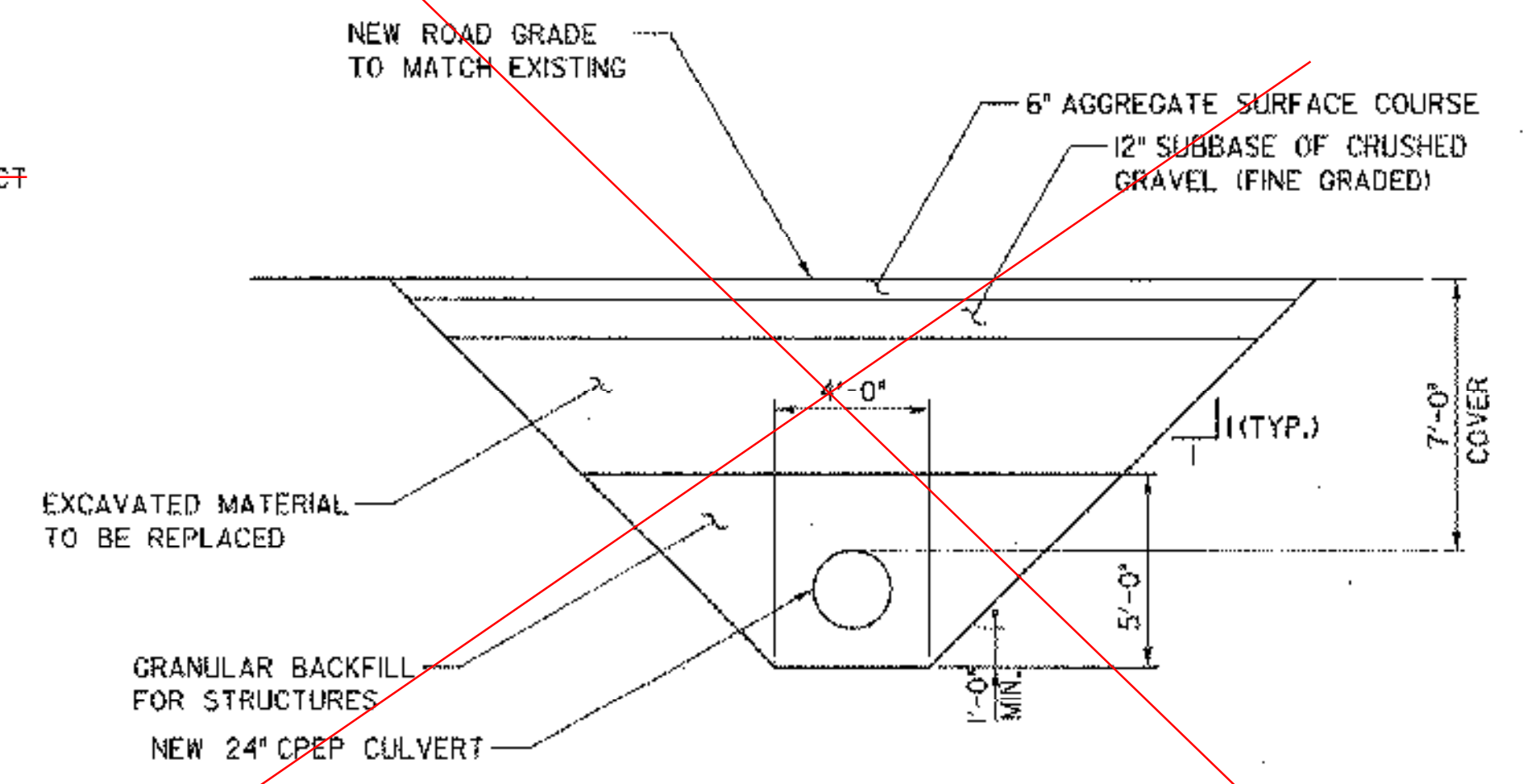
CENTERLINE OF SWALE SLOPE APPROXIMATELY 1V:4H

EXISTING HEADWALL (TO BE REMOVED)

LINE SWALE WITH STONE FILL TYPE II

EXTEND STONE FILL TO TOE OF SWALE

EMERGENCY SPILLWAY BASELINE STA. 201+86.00 = CENTER OF UPSTREAM FACE OF NEW CONCRETE HEADWALL



SECTION C-C
NEW 24" CPEP CULVERT
SCALE 1/4" = 1'-0"

EMERGENCY SPILLWAY BASELINE
200+75 201+00

EMERGENCY SPILLWAY BASELINE STA 201+25.00
CENTER OF DOWNSTREAM FACE OF NEW CONCRETE HEADWALL

EXISTING CONCRETE SPLASH PAD (TO BE REMOVED & REPLACED)

SAW CUT AND REMOVE EXISTING HEADWALL & SPLASH PAD SEE SHEET 20 FOR DETAILS

ROADWAY BASELINE STA 8+17.14 = EMERGENCY SPILLWAY STA 201+50.00

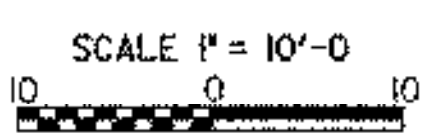
EXISTING STONEMALL (TO REMAIN UNDISTURBED)

EXISTING CONCRETE SPLASH PAD (TO BE REMOVED & REPLACED)

SAW CUT AND REMOVE EXISTING HEADWALL & SPLASH PAD SEE SHEET 20 FOR DETAILS

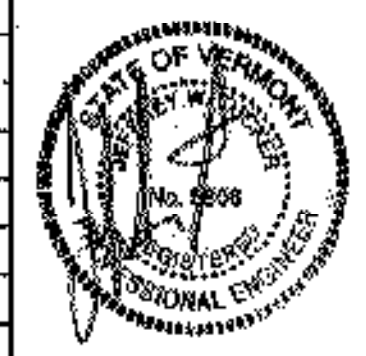
ALL EXISTING GUARD RAIL TO BE REMOVED AND REPLACED WITH NEW GUARDRAIL BETWEEN STA. 7+50 TO STA. 8+75 RT AND LT

DATUM	ASSUMED
VERTICAL	NAD 83
HORIZONTAL	



PLOTTED 05/21/2003

NO.	DATE	REVISIONS	BY	CHK'D



DuBois & King INC.
engineering planning management development

TOWN OF WARREN
WARREN, VERMONT
BLUEBERRY LAKE DAM REHABILITATION PROJECT
EMERGENCY SPILLWAY LAYOUT SHEET

DRAWN BY	DATE
SSB	MAY 2003
CHECKED BY	PROJ. NO.
JWT	R16663
PROJ. ENG.	DRAW. NO.
SRP	11308
SHEET	19 OF 24