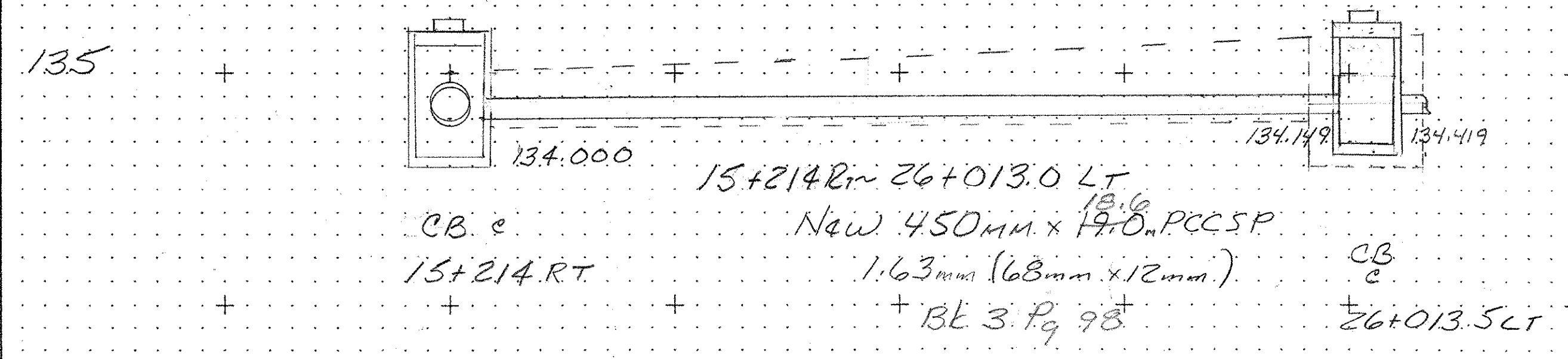
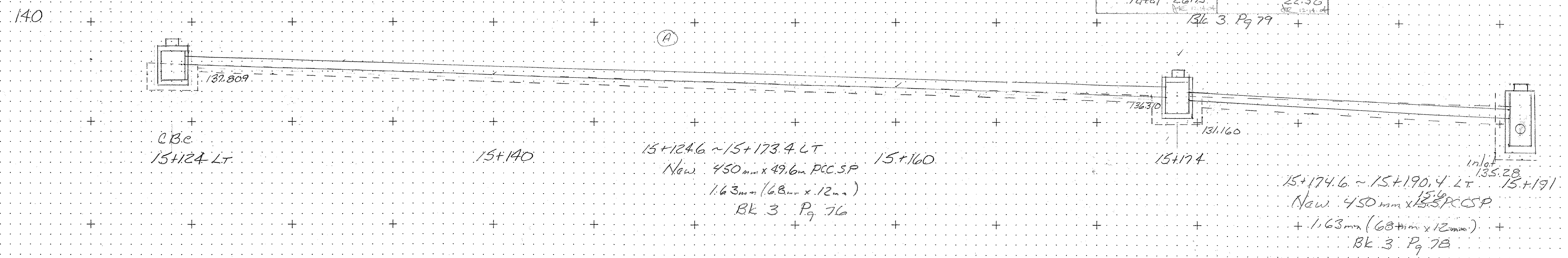


Item 204.20 Trench Exc
 CB @ 15+191
 0-1.5
 1.5 x 2.48 x 2.18 = 7.7
 CB
 0-1.5
 1.5 x 2.48 x 2.18 = 7.7
 x 1.5 = 11.55
 Ppa
 0-1.5
 1.5 x 1.75 x 4.45 = 11.9
 0.3 x 1.75 x 4.45 = 3.5
 x 1.5 = 5.25
 31.5 m³
 12-14-94

Item 204.30
 GB @ 15+191
 2.48 x 2.48 x 2.65 = 11.7
 - (1.74 x 1.74 x 2.65) = 11.7
 Ppa
 1.8 x 1.75 x 4.45 = 14.0
 25.7 m³
 12-14-94

ITEM 204.20 TRENCH EXC CATCH BASIN @ 15+191 LT DEPTH 0-1.5 1.5 x 2.48 x 2.18 = 7.7 m ³ DEPTH OVER 1.5 NONE PIPE 15+191.6 - 15+173.4 LT DEPTH 0-1.5 1.5 x 1.75 x 4.45 = 11.9 m ³ DEPTH OVER 1.5 NONE Total 29.63	ITEM 204.30 GRAN. BACKFILL CATCH BASIN DEPTH 0-1.5 2.48 x 2.48 x 2.65 = 6.81 m ³ DEPTH OVER 1.5 NONE PIPE 15+174.6 - 15+190.4 LT DEPTH 0-1.5 1.8 x 1.75 x 4.45 = 14.0 m ³ DEPTH OVER 1.5 NONE Total 22.58
--	--

ITEM 204.20 TRENCH EXC CATCH BASIN @ 15+174 LT DEPTH 0-1.5 1.5 x 2.48 x 2.18 = 7.7 m ³ DEPTH OVER 1.5 NONE PIPE 15+174.6 - 15+190.4 LT DEPTH 0-1.5 1.8 x 1.75 x 4.45 = 14.0 m ³ DEPTH OVER 1.5 NONE Total 21.7	ITEM 204.30 GRAN. BACKFILL CATCH BASIN DEPTH 0-1.5 2.48 x 2.48 x 2.65 = 6.81 m ³ DEPTH OVER 1.5 NONE PIPE 15+174.6 - 15+190.4 LT DEPTH 0-1.5 1.8 x 1.75 x 4.45 = 14.0 m ³ DEPTH OVER 1.5 NONE Total 22.58
---	--



ITEM 204.20 TRENCH EXC CATCH BASIN @ 26+013.5 LT DEPTH 0-1.5 1.5 x 2.55 x 2.55 = 9.53 m ³ DEPTH OVER 1.5 1.4 x 2.55 x 2.55 = 9.09 m ³ PIPE 15+214.6 - 26+013.5 LT DEPTH 0-1.5 1.5 x 1.75 x 9.8 = 21.32 m ³ 1.6 x 1.45 x 9.8 = 14.77 m ³ 36.09 m ³ DEPTH OVER 1.5 1.2 x 1.45 x 9.8 = 17.13 m ³ Total 57.24	ITEM 204.30 GRAN. BACKFILL CATCH BASIN DEPTH 0-1.5 1.5 x 2.55 x 2.55 = 9.53 m ³ DEPTH OVER 1.5 1.4 x 2.55 x 2.55 = 9.09 m ³ PIPE 15+214.6 - 26+013.5 LT DEPTH 0-1.5 1.8 x 1.75 x 9.8 = 31.86 m ³ 1.8 x 1.45 x 9.8 = 26.31 m ³ 58.17 m ³ DEPTH OVER 1.5 1.7 x 1.45 x 9.8 = 24.15 m ³ Total 82.04
--	--