

PAVMENT MARKING & TRAFFIC SIGNING LAYOUT

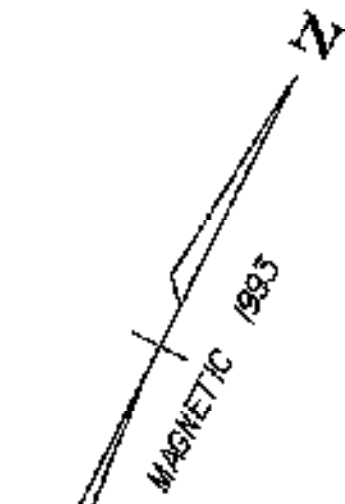


TEMPORARY 100mm WHITE LINE
 ah 15+000 ~ ah 15+120 RT. EDGE LINE-SOLID
 ah 15+000 ~ ah 15+120 LT. EDGE LINE-SOLID

DURABLE 100mm WHITE LINE
 ah 15+000 ~ ah 15+120 RT. EDGE LINE-SOLID
 ah 15+000 ~ ah 15+120 LT. EDGE LINE-SOLID

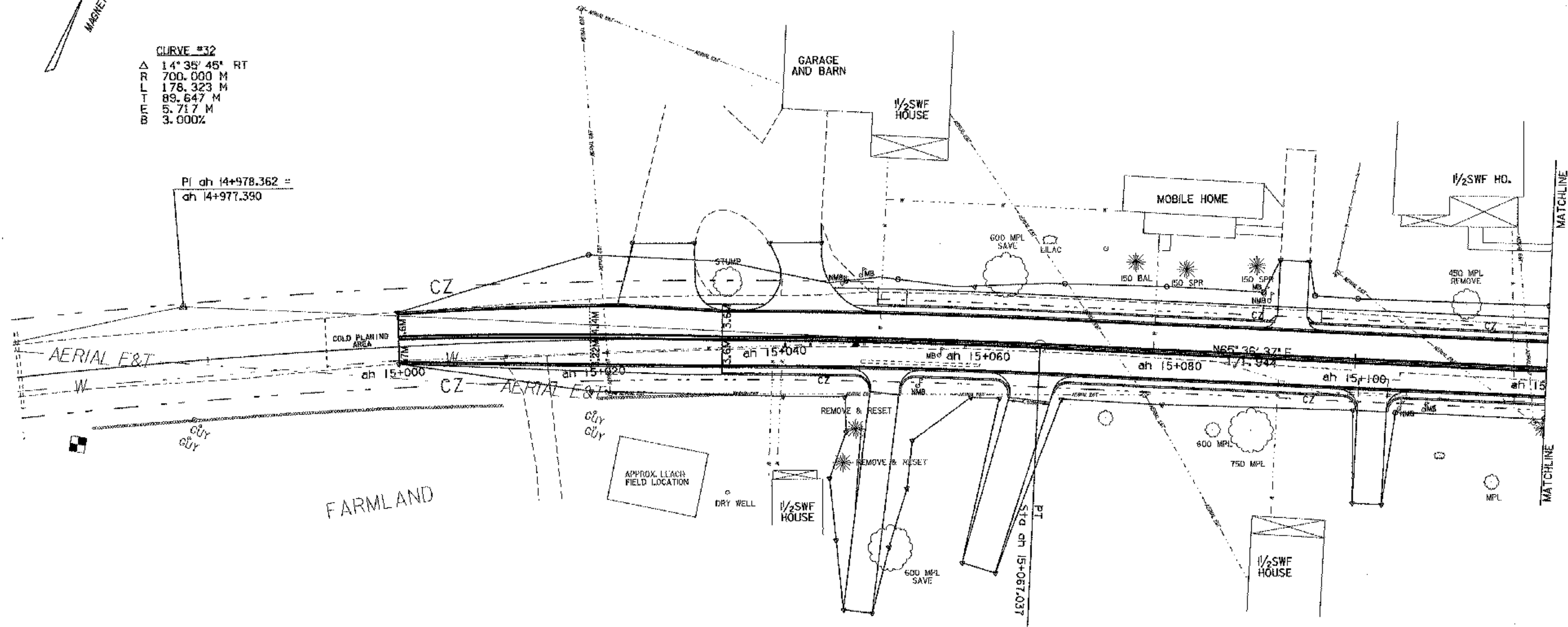
TEMPORARY 100mm YELLOW LINE
 ah 15+000 C/L ah 15+120 C/L DBL. LINE-SOLID

DURABLE 100mm YELLOW LINE
 ah 15+000 C/L ah 15+120 C/L DBL. LINE-SOLID



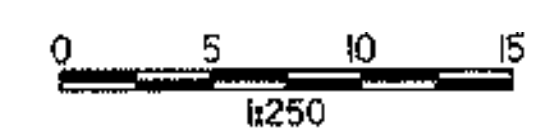
CURVE #32
 Δ 14° 35' 45" RT
 R 700.000 M
 L 176.323 M
 T 89.647 M
 E 5.717 M
 B 3.000%

PI ah 14+978.362 =
 ah 14+977.390



LEGEND
 R = REMOVE
 N = NEW
 R&S = REMOVE & SALVAGE
 RET = RETAIN

PAVEMENT MARKING & TRAFFIC SIGNING LAYOUT



○ DENOTES TREE OR STUMP REMOVAL

ALL DRIVE RADII SHALL BE 6M UNLESS OTHERWISE NOTED PER STD B-71M

PROJECT NAME:	FRANKLIN
PROJECT NUMBER:	STP 0301(18)
FILE NAME: ...85c060/design/dc060bdr.dgn	PLOT DATE: 24-MAR-2003
PROJECT LEADER: DELLASANTA	DRAWN BY: SQUAD B
DESIGNED BY: SQUAD B	CHECKED BY: SQUAD B
IPARM FILE NAME: dc060pml.l	SHEET 34 OF 60