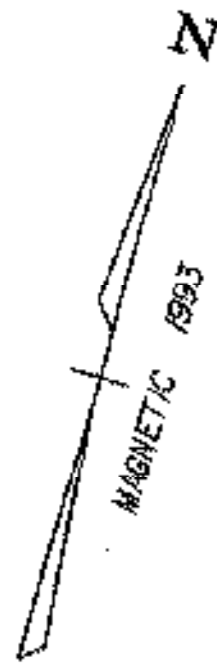


PAVMENT MARKING & TRAFFIC SIGNING LAYOUT



TEMPORARY 4" WHITE LINE
M/L ah 15+300 ~ ah 15+459 LT, EDGE LINE-SOLID
M/L ah 15+300 ~ ah 15+462 RT, EDGE LINE-SOLID

TEMPORARY 4" YELLOW LINE
M/L ah 15+300 C/L ~ ah 15+459 C/L DBL. LINE-SOLID

DURABLE 4" WHITE LINE
M/L ah 15+300 ~ ah 15+459 LT, EDGE LINE-SOLID
M/L ah 15+300 ~ ah 15+462 RT, EDGE LINE-SOLID

DURABLE 4" YELLOW LINE
M/L ah 15+300 C/L ~ ah 15+459 C/L DBL. LINE-SOLID

DURABLE 24" STOP BAR
M/L 15+458.8 C/L ~ ah 15+459.5 C/L RT (7M)

DURABLE LETTER OR SYMBOL
M/L 15+449.1 C/L ~ ah 15+451.5 C/L RT (STOP)

REMOVING SIGNS

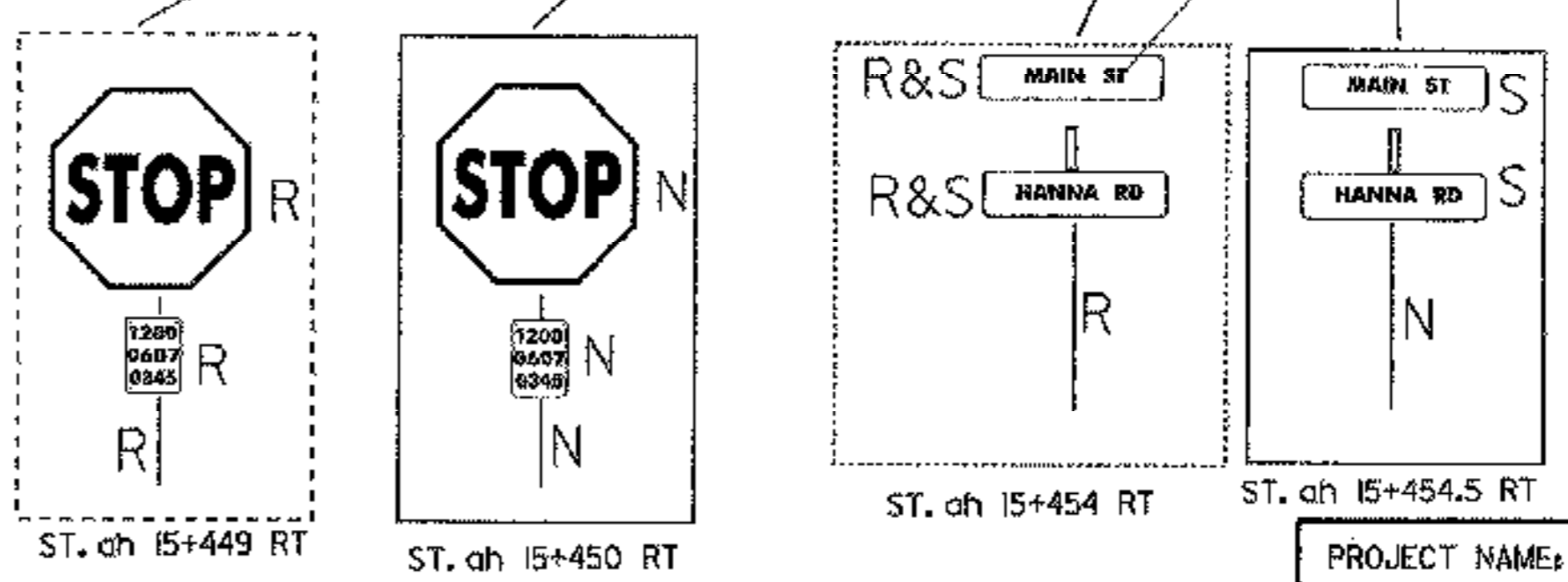
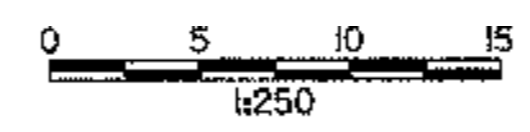
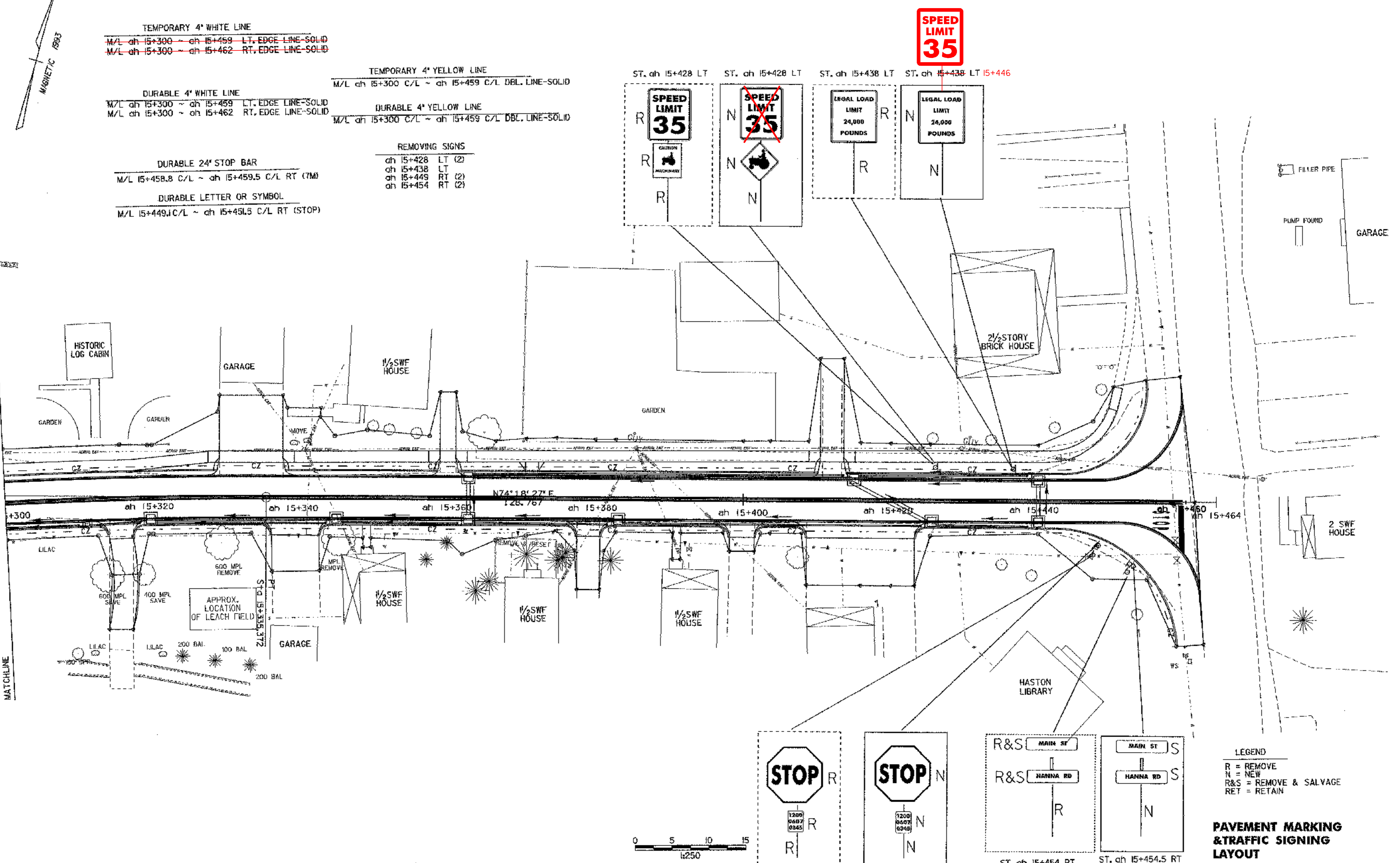
ah 15+428 LT (2)
ah 15+438 LT (2)
ah 15+449 RT (2)
ah 15+454 RT (2)

MATCHLINE

MATCHLINE

MATCHLINE

MATCHLINE



LEGEND
R = REMOVE
N = NEW
R&S = REMOVE & SALVAGE
RET = RETAIN

PAVEMENT MARKING & TRAFFIC SIGNING LAYOUT

PROJECT NAME:	FRANKLIN
PROJECT NUMBER:	STP 030(18)
FILE NAME: ...85c060/desigr/dc060bdr.dgn	PLOT DATE: 27-MAR-2003
PROJECT LEADER: DELASANTA	DRAWN BY: SQUAD B
DESIGNED BY: SQUAD B	CHECKED BY: SQUAD B
IPARM FILE NAME: dc060pms3	SHEET 36 OF 60

○ DENOTES TREE OR STUMP REMOVAL

ALL DRIVE RADII SHALL BE 6M UNLESS OTHERWISE NOTED PER STD B-7M