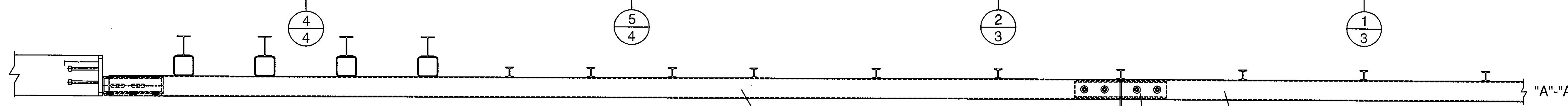
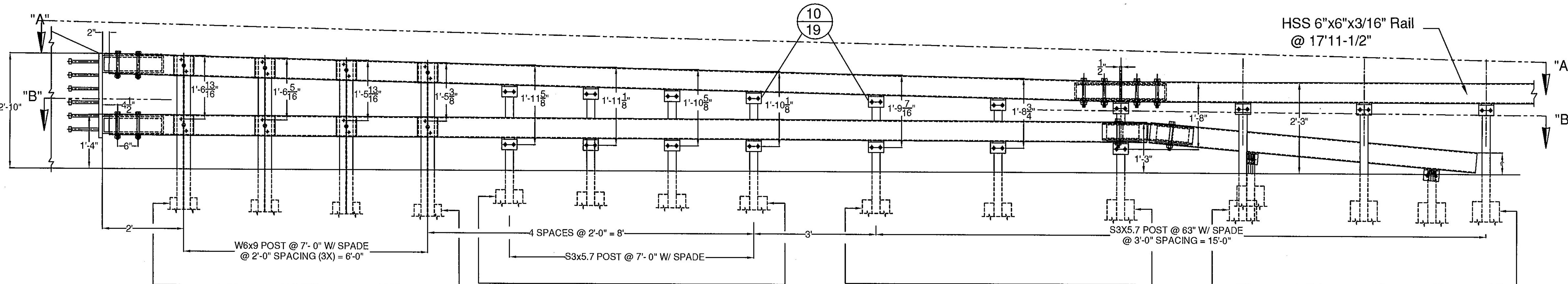
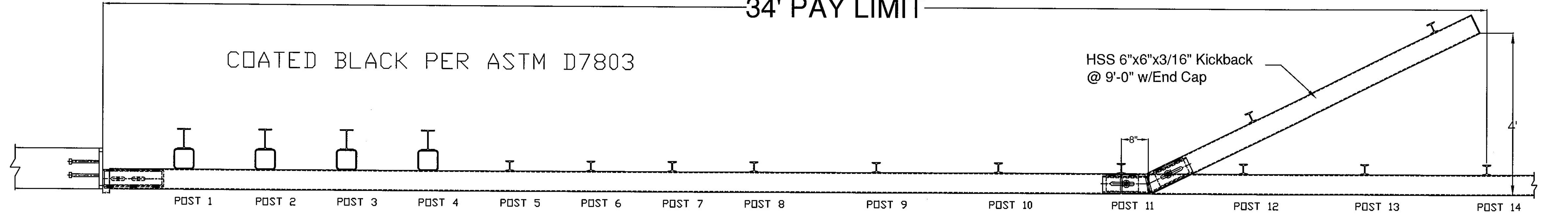


34' PAY LIMIT

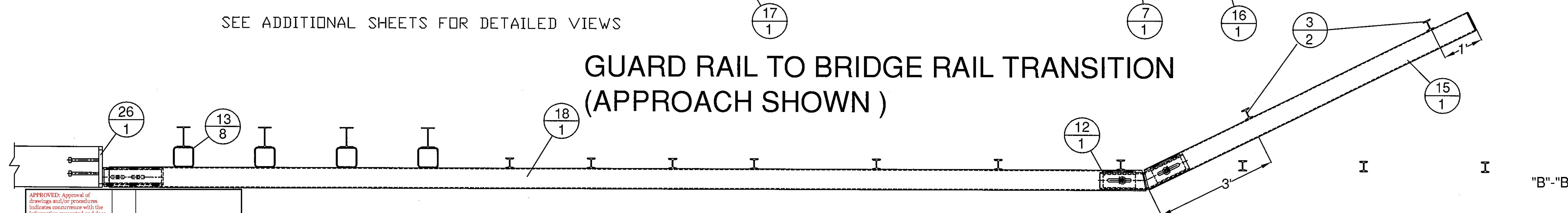
COATED BLACK PER ASTM D7803

HSS 6"x6"x3/16" Kickback @ 9'-0" w/End Cap



SEE ADDITIONAL SHEETS FOR DETAILED VIEWS

GUARD RAIL TO BRIDGE RAIL TRANSITION (APPROACH SHOWN)



APPROVED: Approval of drawings and/or procedures indicates concurrence with the information presented and does not relieve the Contractor or Fabricator of compliance with all specifications and code requirements.

APPROVED AS NOTED

REVISION AND RESUBMIT

NOT REVIEWED

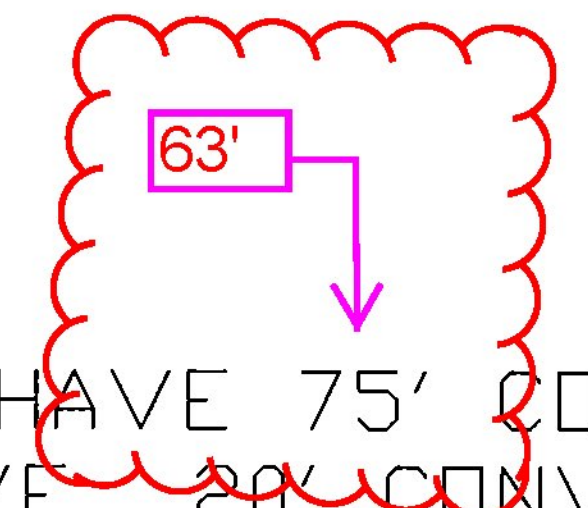
Date: 3/10/2015

By: Michael J. Chenette

This review by Stantec Consulting Services Inc. is for the sole purpose of ascertaining conformance with the general design concept. This review shall not mean that Stantec Consulting Services Inc. approves the detail design inherent in the shop drawings, responsibility for which shall remain with the Contractor. Submitting same, and such review shall not relieve the Contractor of his responsibility for errors or omissions in the shop drawing or of his responsibility for meeting all requirements of the Contract Documents. The contractor is responsible for dimensions to be confirmed and correlated at the job site, for information that pertains solely to the fabrication processes or to techniques of construction, and installation and for coordination of the work of all subcontractors.

Stantec

WW 3 & 4 - STRAIGHT
 WW 1 - ITEMS 16, 17, & 18 TO HAVE 75' CONVEX RADIUS
 WW 2 - ITEMS 17, & 18 TO HAVE 20' CONVEX RADIUS



ITEM #: 900.620

STRUCTURAL STEEL TO COMPLY W/ ASTM A6

TOLERANCE UNLESS OTHERWISE NOTED:
 FRACTIONS = ± 1/16"
 ANGLES = ± 1/2"
 DIAMETERS = ± 1/32"

Galvanized 2-Rail Box Beam Guardrail Approach Section
 EM14-202, CHICKEN FARM ROAD (T.H.18) CLASS 3 LOCAL ROAD, BRIDGE NO: 36
 PROJECT: 618 CORINTH BRO 1447(29), TOWN OF CORINTH, ORANGE COUNTY, VT

R NO.	DATE	DESCRIPTION	BY	R NO.	DATE	DESCRIPTION	BY
E 1	3/5/15	REVISED PER 3/4/15 MARK-UP	E.P.	E			

ELDERLEE, INC.
 OAKS CORNERS, NEW YORK 14578
 E-Mail: dlong@elderlee.com / epeek@elderlee.com
 Tel: 315-789-6670 Fax: 315-789-6615

DRAWN: E.P. 12/15/14
 CHECKED: D.L. 12/16/14
 APPROVED: M.V.
 SCALE: SCHEMATIC
 DRAWING NO. FRL - CORINTH-T

SHEET 1 OF 5