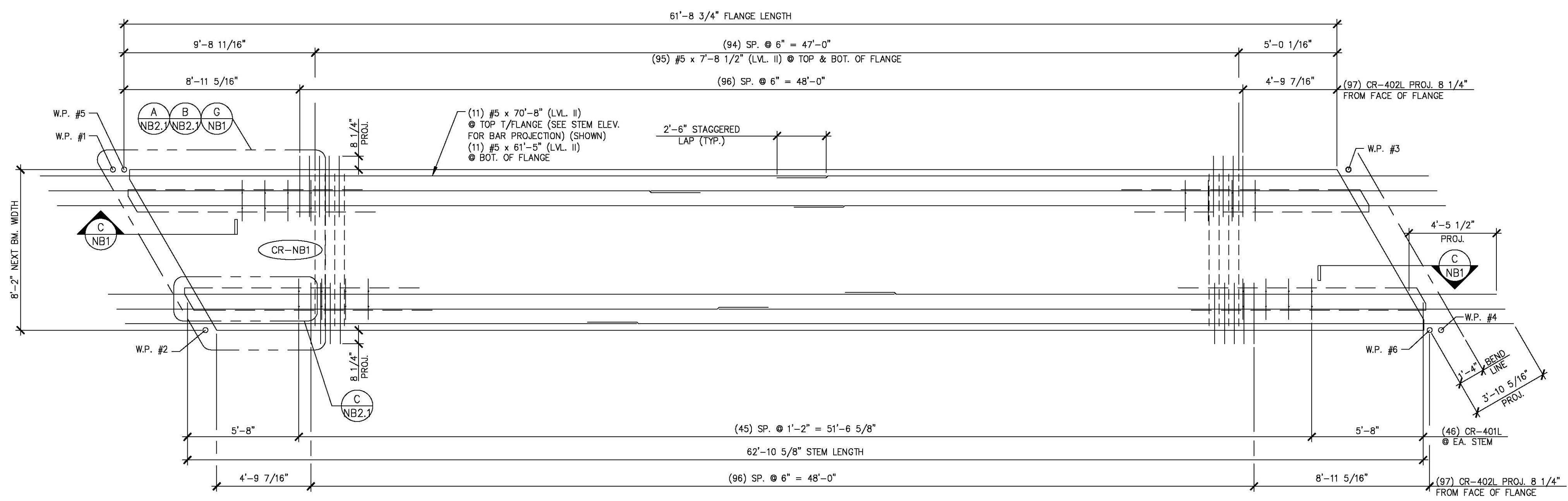
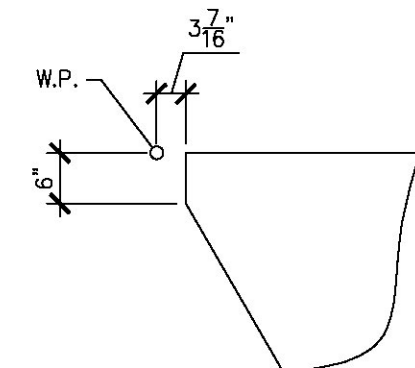


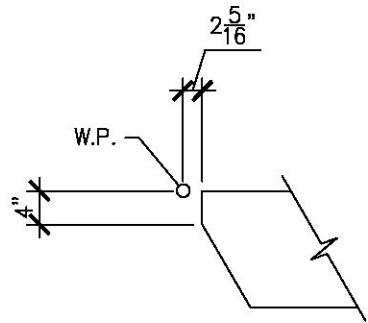
1 DIMENSIONAL PLAN VIEW IN FORM
 NB2 1/4" = 1'-0"



2 REINFORCING PLAN VIEW IN FORM
 NB2 1/4" = 1'-0"



A ACUTE CORNER BLOCKOUT DETAIL (FOR FLANGE) 1/2" = 1'-0"



B ACUTE CORNER BLOCKOUT DETAIL (FOR STEM) 1/2" = 1'-0"

APPROVED: Approval of drawings and/or procedures indicates concurrence with the information presented and does not relieve the Contractor or Fabricator of compliance with all specifications and code requirements.

APPROVED AS NOTED

REVISE AND RESUBMIT

NOT REVIEWED

Date: 3/27/2015

By: Michael J. Chenette

This review by Stantec Consulting Services Inc. is for the sole purpose of ascertaining conformance with the general design concept. This review shall not mean that Stantec Consulting Services Inc. approves the detail design inherent in the shop drawings, responsibility for which shall remain with the Contractor. Submitting same, and such review shall not relieve the Contractor of his responsibility for errors or omissions in the shop drawing or of his responsibility for meeting all requirements of the Contract Documents. The contractor is responsible for dimensions to be confirmed and correlated at the job site, for information that pertains solely to the fabrication processes or to techniques of construction and installation and for coordination of the work of all subtrades.

Stantec

03-13-15 REVISED PER EOR COMMENTS

APPROVAL STAMP:

J.P. CARRARA & SONS INC. AUSTIN CONSTRUCTION, INC.
 Precast & Prestress Manufacturer CONTRACTOR
 2464 OSE STR., MIDDLEBURY, VERMONT 05753 Phone:(802)388-6361 Fax:(802)388-9010 CONCORD, VERMONT

STATE OF VERMONT AGENCY OF TRANSPORTATION COUNTY OF ORANGE DATE: MAR. 13, 2015

TOWN OF CORINTH CHICKEN FARM ROAD T.H.16 CLASS 3 LOCAL ROAD CHKD: RM DFTM: PSS
 BRIDGE NO.: 36 PROJECT NO.: BRO 1447 (29) JOB NO: 23448-014

PRESTRESSED NEXT BEAM DETAILS DWG. NO: NB2

MARK: CR-NB1 QTY.: 1 WT.: 44.20 T VOL.: 21.82 cy			
MATERIAL LIST / NEXT BEAM			
ITEM	MARK	DESCRIPTION	QTY.
1	CR-401L	#4 BENT BAR (LEVEL II, DUAL COATED)	124
2	CR-402L	#4 BENT BAR (LEVEL II, DUAL COATED)	194
3	CR-403L	#4 BENT BAR (LEVEL II, DUAL COATED)	16
4	CR-405L	#4 BENT BAR (LEVEL II, DUAL COATED)	16
5	CR-406L	#4 BENT BAR (LEVEL II, DUAL COATED)	8
6	CR-407L	#4 BENT BAR (LEVEL II, DUAL COATED)	4
7	CR-408L	#4 BENT BAR (LEVEL II, DUAL COATED)	4
8	CR-409L	#4 BENT BAR (LEVEL II, DUAL COATED)	4
9	CR-411L	#4 BENT BAR (LEVEL II, DUAL COATED)	12
10	CR-412L	#4 BENT BAR (LEVEL II, DUAL COATED)	12
11	CR-413L	#4 BENT BAR (LEVEL II, DUAL COATED)	10
12	CR-414L	#4 BENT BAR (LEVEL II, DUAL COATED)	8
13	CR-415L	#4 BENT BAR (LEVEL II, DUAL COATED)	4
14	CR-416L	#4 BENT BAR (LEVEL II, DUAL COATED)	6
15	CR-501L	#5 BENT BAR (LEVEL II, DUAL COATED)	2
16	CR-502L	#5 BENT BAR (LEVEL II, DUAL COATED)	2
17	CR-503L	#5 BENT BAR (LEVEL II, DUAL COATED)	2
18	CR-504L	#5 BENT BAR (LEVEL II, DUAL COATED)	2
19	CR-505L	#5 BENT BAR (LEVEL II, DUAL COATED)	2
20	CR-506L	#5 BENT BAR (LEVEL II, DUAL COATED)	2
21	CR-507L	#5 BENT BAR (LEVEL II, DUAL COATED)	2
22	CR-510L	#5 BENT BAR (LEVEL II, DUAL COATED)	2
23	CR-511L	#5 BENT BAR (LEVEL II, DUAL COATED)	2
24	CR-512L	#5 BENT BAR (LEVEL II, DUAL COATED)	2
25	CR-513L	#5 BENT BAR (LEVEL II, DUAL COATED)	2
26	CR-514L	#5 BENT BAR (LEVEL II, DUAL COATED)	2
27	CR-515L	#5 BENT BAR (LEVEL II, DUAL COATED)	2
28	CR-516L	#5 BENT BAR (LEVEL II, DUAL COATED)	2
29	CR-517L	#5 BENT BAR (LEVEL II, DUAL COATED)	2
30	CR-518L	#5 BENT BAR (LEVEL II, DUAL COATED)	2
31	CR-519L	#5 BENT BAR (LEVEL II, DUAL COATED)	4
32	CR-520L	#5 BENT BAR (LEVEL II, DUAL COATED)	6
33		#4 x 8'-11" (LEVEL II, DUAL COATED)	18
34		#5 x 7'-8 1/2" (LEVEL II, DUAL COATED)	202
35		#5 x 7'-9" (LEVEL II, DUAL COATED)	8
36		#5 x 7'-10" (LEVEL II, DUAL COATED)	8
37		#5 x 7'-11" (LEVEL II, DUAL COATED)	8
38		#5 x 8'-0" (LEVEL II, DUAL COATED)	4
39		#5 x 8'-1" (LEVEL II, DUAL COATED)	4
40		#5 x 8'-2" (LEVEL II, DUAL COATED)	4
41		#5 x 8'-3" (LEVEL II, DUAL COATED)	4
42		#5 x 8'-4" (LEVEL II, DUAL COATED)	4
43		#5 x 8'-5" (LEVEL II, DUAL COATED)	4
44		#5 x 8'-7" (LEVEL II, DUAL COATED)	4
45		#5 x 8'-8" (LEVEL II, DUAL COATED)	8
46		#5 x 8'-9" (LEVEL II, DUAL COATED)	4
47		#5 x 70'-8" (W/ (1) 2'-6" STAGGERED LAP) (40' + 33'-2") (LVL. II, DUAL COATED)	11
48		#5 x 61'-5" (W/ (1) 2'-6" STAGGERED LAP) (40' + 23'-11") (LVL. II, DUAL COATED)	11
49			
50		2" I.D. PVC SLEEVE	4
51		SET OF (4) 0.60" x 270 KSI STRAND LIFTING LOOPS	4
52			