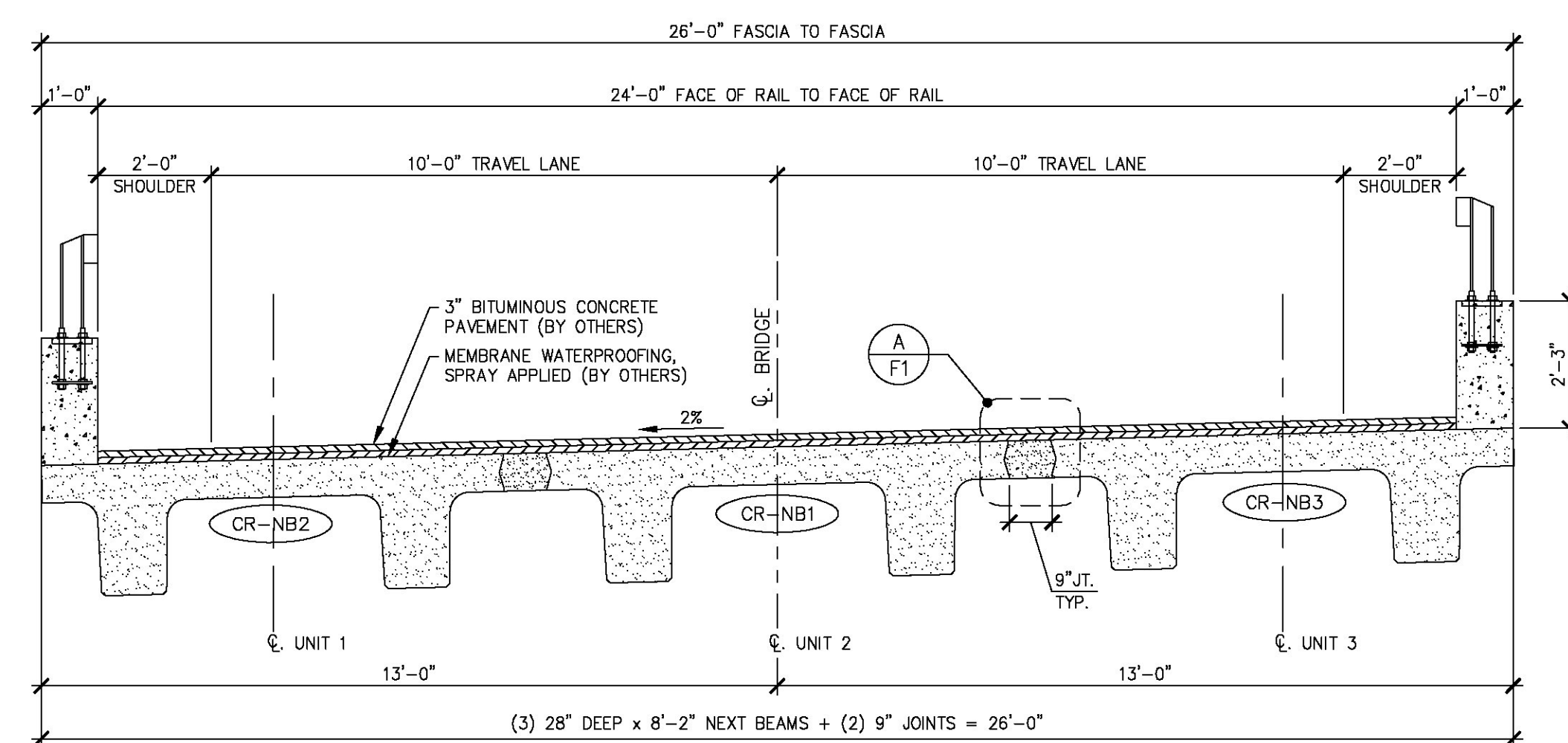
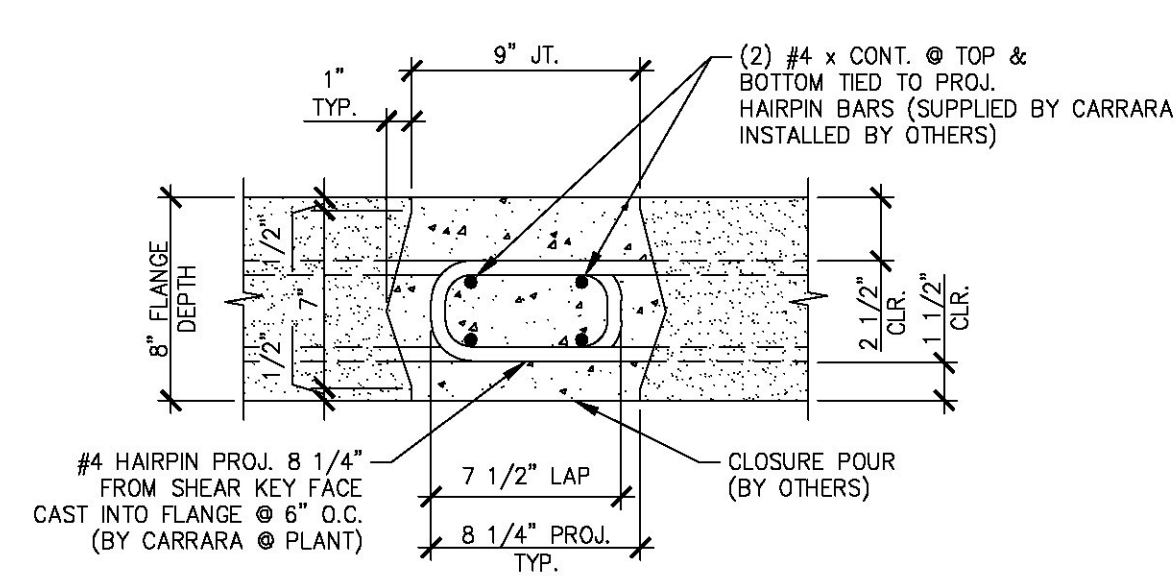


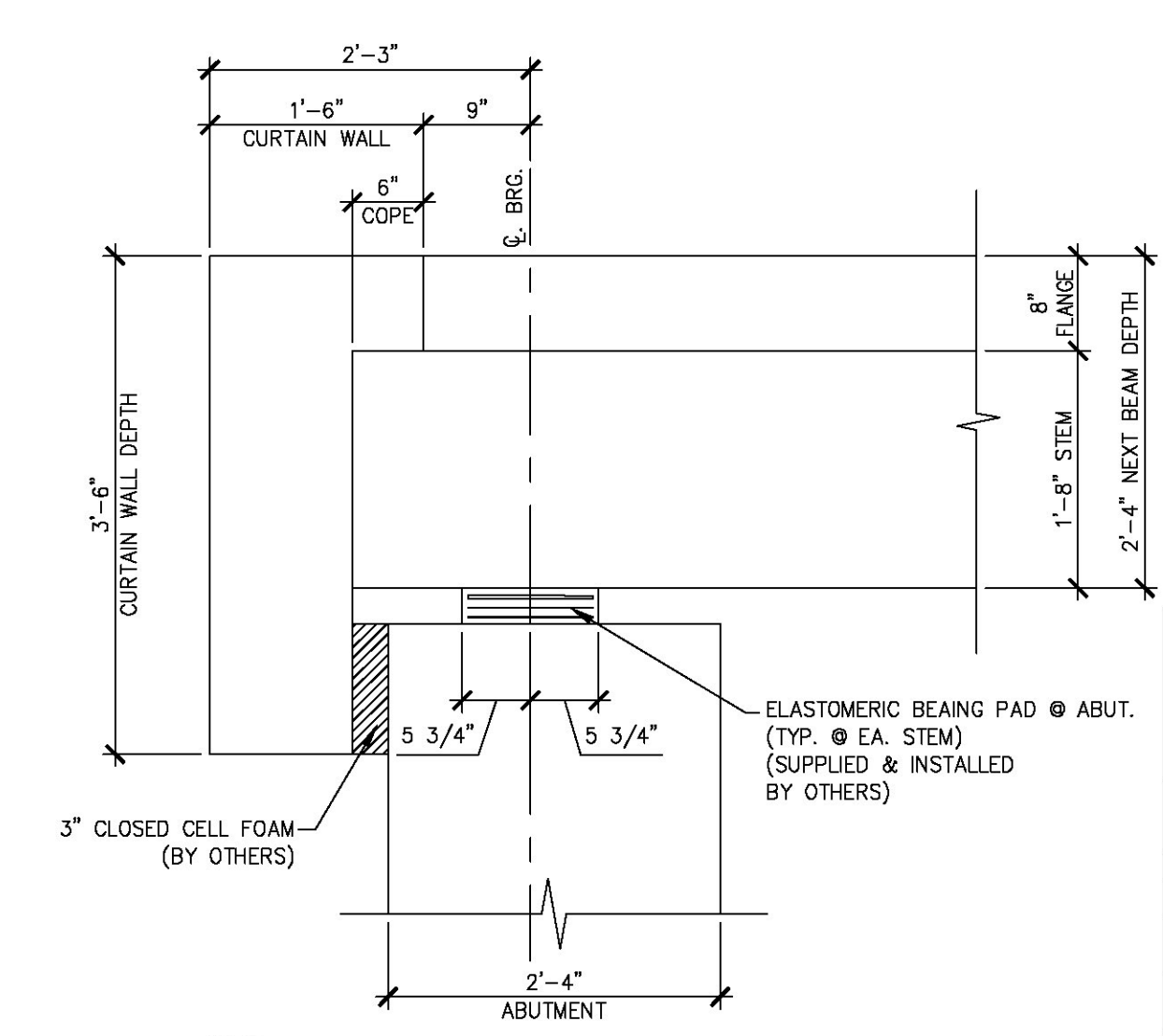
1 NEXT BEAM LAYOUT
1/4" = 1'-0"



2 TRANSVERSE NEXT BEAM SECTION
3/8" = 1'-0"



A NEXT BEAM CLOSURE POUR
1 1/2" = 1'-0"



B BEARING DETAIL
3/4" = 1'-0"

APPROVED: Approval of drawing and/or procedure indicates concurrence with the information presented and does not relieve the Contractor or fabricator of compliance with all specifications and code requirements.	X	Stantec
APPROVED AS NOTED		
REVISE AND RESUBMIT		
NOT REVIEWED		
Date: 3/27/2015		
By: Michael J. Chenette		
<p>This review by Stantec Consulting Services Inc. is for the sole purpose of ascertaining conformance with the general design concept. This review shall not constitute that Stantec Consulting Services Inc. approves the detail design inherent in the shop drawings, responsibility for which shall remain with the Contractor. Submitting same, and such review shall not relieve the Contractor of his responsibility for errors or omissions in the shop drawing or of his responsibility for meeting all requirements of the Contract Documents. The contractor is responsible for dimensions to be confirmed and coordinated at the job site, for information that pertains solely to the fabrication process or to techniques of construction and installation and for coordination of the work of all trades.</p>		

APPROVAL STAMP:	J.P. CARRARA & SONS INC. Precast & Prestress Manufacturer 2464 OISE STR., MIDDLEBURY, VERMONT 05753 Phone:(802)388-6361 Fax:(802)388-9010		AUSTIN CONSTRUCTION, INC. CONTRACTOR CONCORD, VERMONT	
	STATE OF VERMONT AGENCY OF TRANSPORTATION COUNTY OF ORANGE		DATE: MAR. 13, 2015 SCALE: NOTED	
	TOWN OF CORINTH CHICKEN FARM ROAD T.H.16 CLASS 3 LOCAL ROAD BRIDGE NO.: 36 PROJECT NO.: BRO 1447 (29)		CHKD: RM DFTM: PSS JOB NO: 23448-014	
	PRESTRESSED NEXT BEAM LAYOUT			DWG. NO: F1