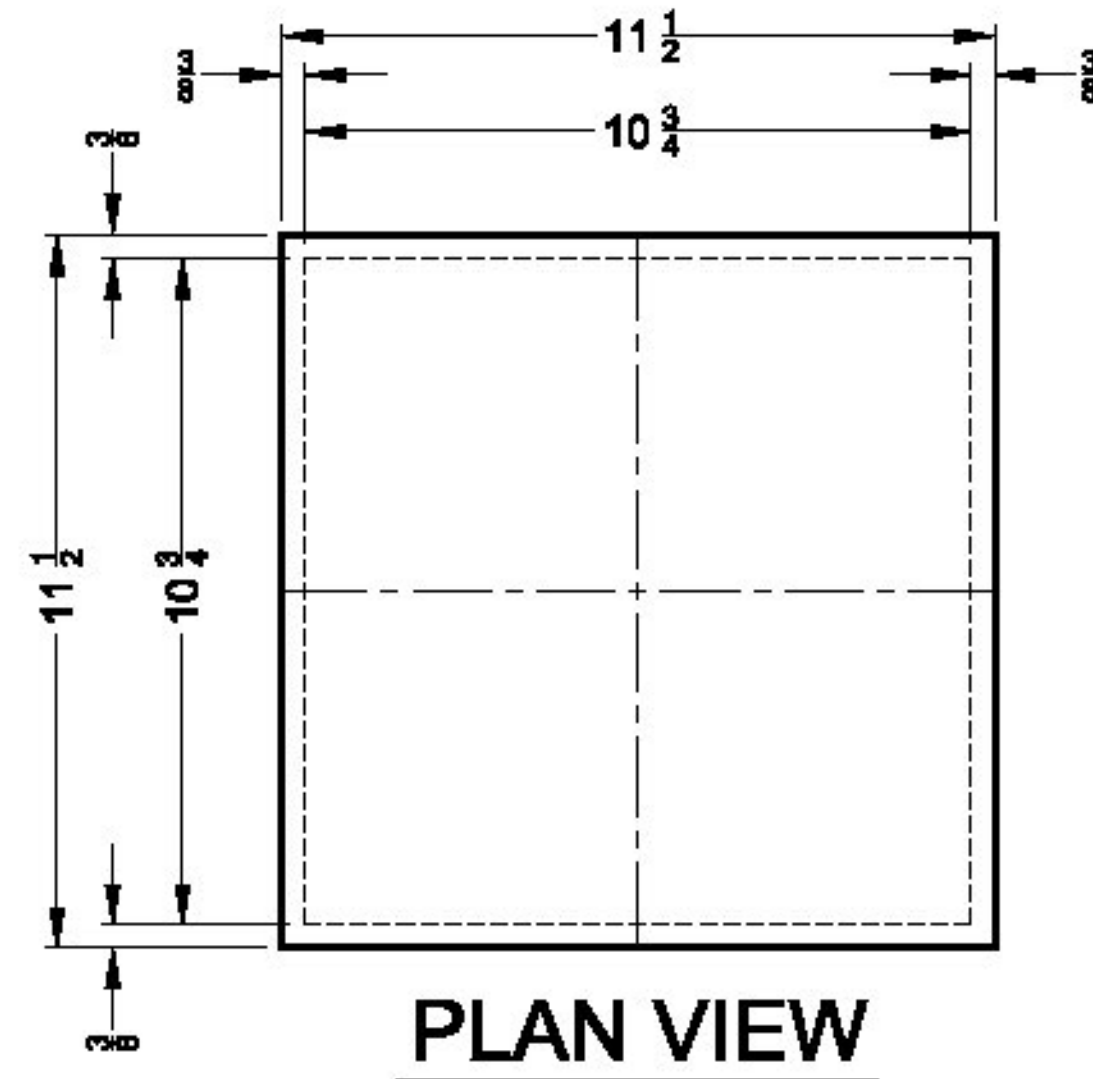
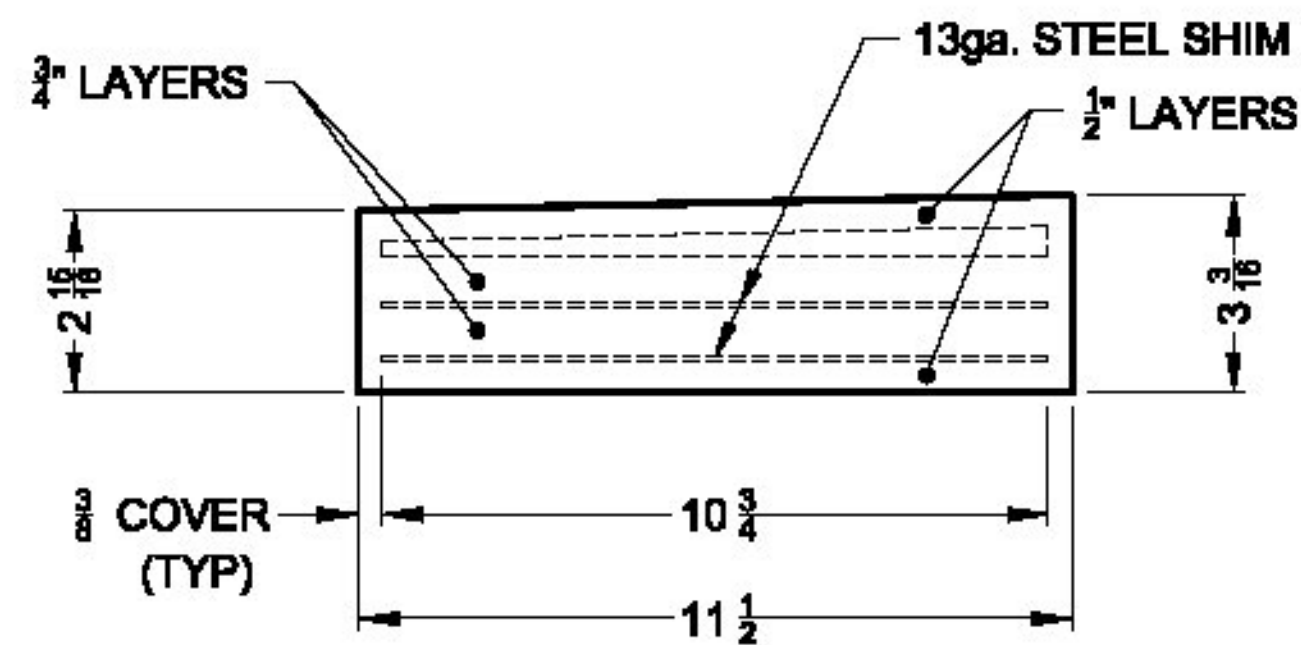


ABUTMENT 1 BEARINGS

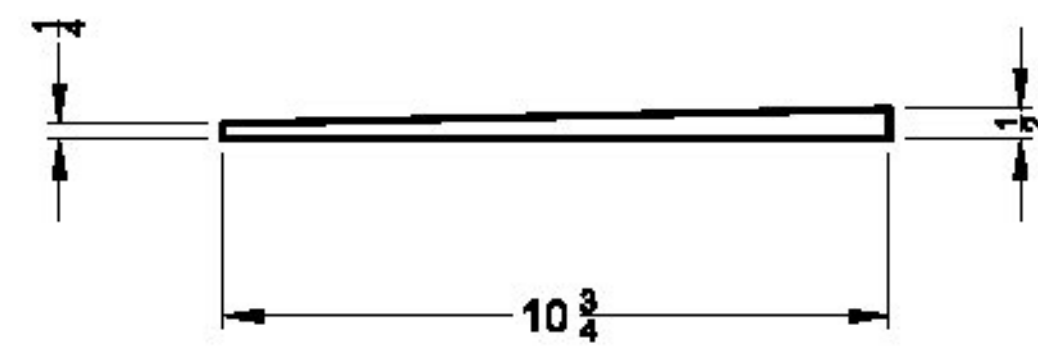


PLAN VIEW



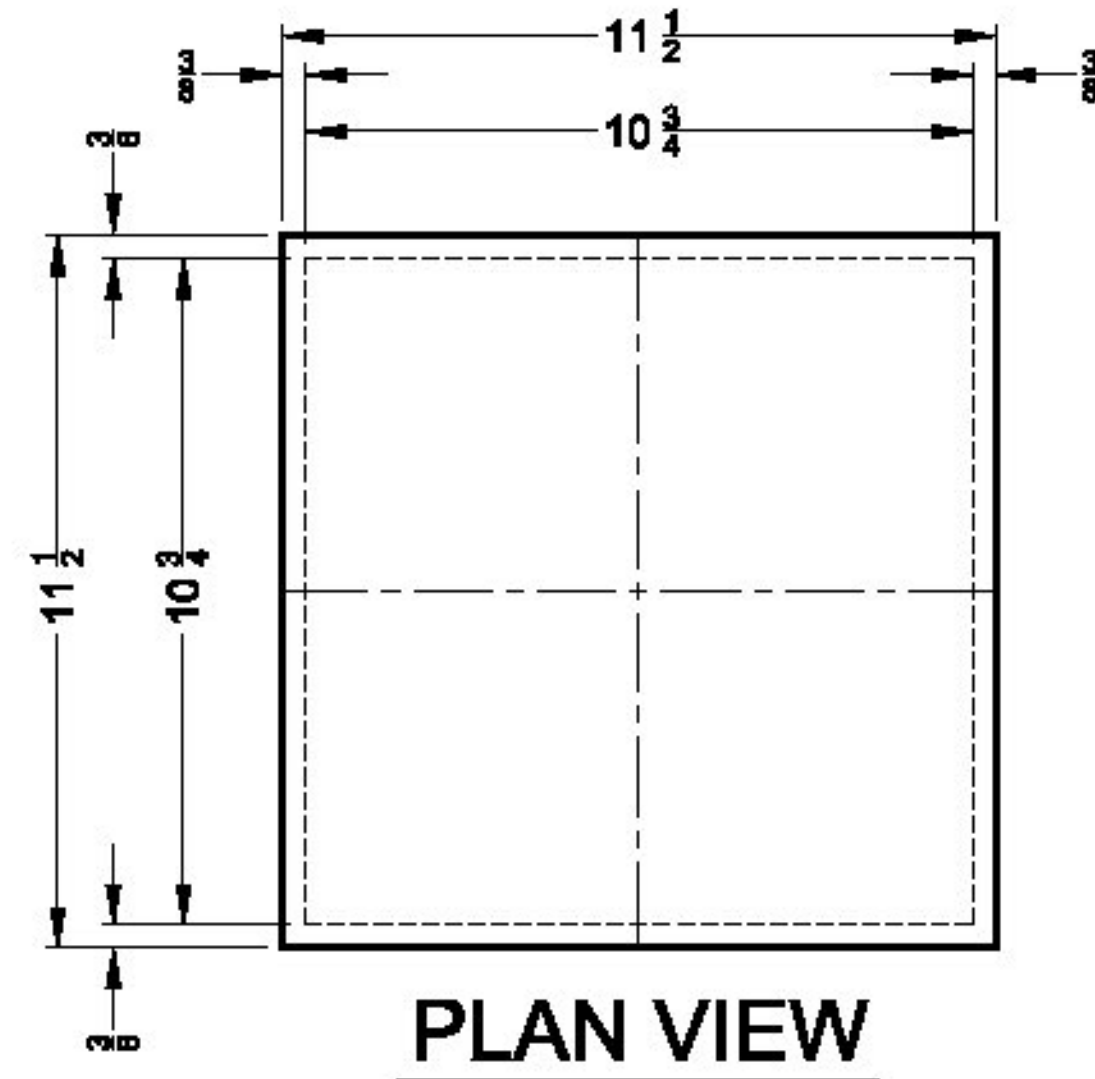
ELEVATION VIEW

QTY. REQ'D. = 6

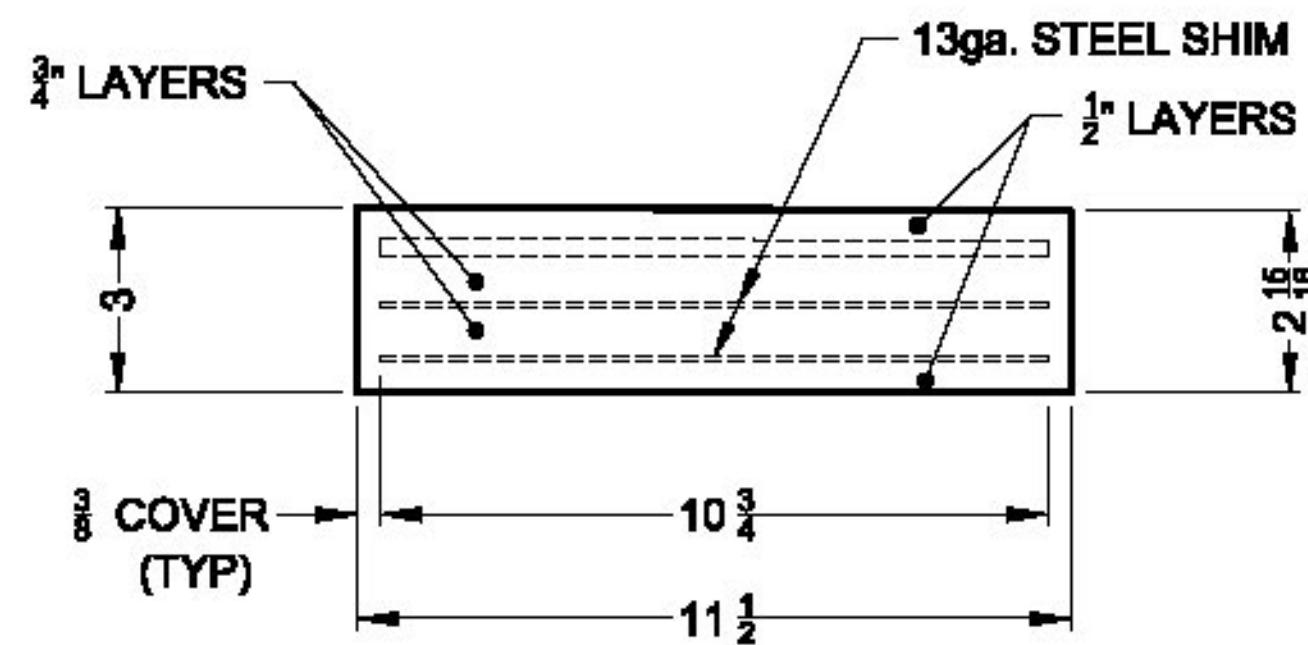


BEVELED SHIM DETAIL

ABUTMENT 2 BEARINGS

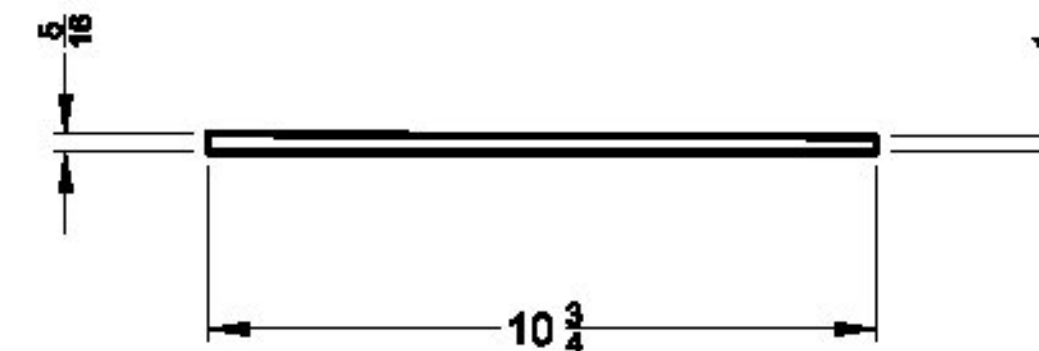


PLAN VIEW



ELEVATION VIEW

QTY. REQ'D. = 6



BEVELED SHIM DETAIL

REVISIONS					
ZONE	REV	DESCRIPTION	REVISED BY	DATE	APPROVED

NOTES:

- MANUFACTURING FACILITY LOCATION:
AMSCOT STRUCTURAL PRODUCTS CORP.
241 E. BLACKWELL STREET
DOVER, N.J. 07801
CONTACT- PETER SOMOGYI
PH: 973-989-8800
FAX: 973-989-5851
- ALL BEARING PADS TO BE MANUFACTURED IN ACCORDANCE WITH AASHTO SECTION 18. THE ELASTOMER SHALL BE GRADE 3 NEOPRENE WITH A DUROMETER HARDNESS OF 60 ± 5. THE STEEL REINFORCING PLATES SHALL CONFORM TO ASTM A36.
- THE BEARINGS ARE DESIGNED SO THE SUPERSTRUCTURE MAY BE ERECTED WHEN THE AMBIENT AIR TEMPERATURE IS WITHIN THE RANGE OF 20° F. TO 70° F. WITHOUT ADJUSTING THE BEARINGS FOR TEMPERATURE. IF THE BEAM TEMPERATURE IS OUTSIDE THIS RANGE, THE BEARINGS SHALL BE RESET AS DIRECTED BY THE RESIDENT ENGINEER.
- ALL STEEL TO BE FACTORY VULCANIZED TO THE ELASTOMER DURING THE PRIMARY MOLDING PROCESS.
- ALL DIMENSIONS ARE IN INCHES, UNLESS OTHERWISE NOTED.
- TOLERANCES: THICKNESS -0 +1/8
PLAN -0 +1/8

APPROVED: Approval of drawings and/or procedures indicates concurrence with the information presented and does not relieve the Contractor or Fabricator of compliance with all specifications and code requirements.	
APPROVED AS NOTED <input checked="" type="checkbox"/>	
REVISE AND RESUBMIT <input type="checkbox"/>	
NOT REVIEWED <input type="checkbox"/>	
Date: 2/13/2015	
By: <i>[Signature]</i>	
<small>This review by Stantec Consulting Services Inc. is for the sole purpose of ascertaining conformance with the general design concept. This review shall not mean that Stantec Consulting Services Inc approves the detail design inherent in the shop drawings, responsibility for which shall remain with the Contractor. Submitting same, and such review shall not relieve the Contractor of his responsibility for errors or omissions in the shop drawing or of his responsibility for meeting all requirements of the Contract Documents. The contractor is responsible for dimensions to be confirmed and correlated at the job site, for information that pertains solely to the fabrication processes or to techniques of construction and installation and for coordination of the work of all subtrades.</small>	

Inspection Block
Initial Dim. Check Sign: _____ Date: _____
In Process Dim. Chk. Sign: _____ Date: _____
100% Visual Weld Insp. Sign: _____ Date: _____
Paint Insp.(see form) Sign: _____ Date: _____
Final Inspection Sign: _____ Date: _____

CORINTH		
PROJECT NO. : BRO 1447(29)		
CONTRACT NO. :	PIN NO. :	
ELASTOMERIC BEARING ASSEMBLY DETAILS		
AMSCOT STRUCTURAL PRODUCTS CORP.		
SCALE: N.T.S.	APPR'D: BF	DRAWN BY: E.J.G.
DATE: 11/6/14	REVISION: 0	
FOR: AUSTIN CONSTRUCTION		
DWG NO: AC14A1R0	SHEET 1 OF 1	

Add direction of stationing for both bearings