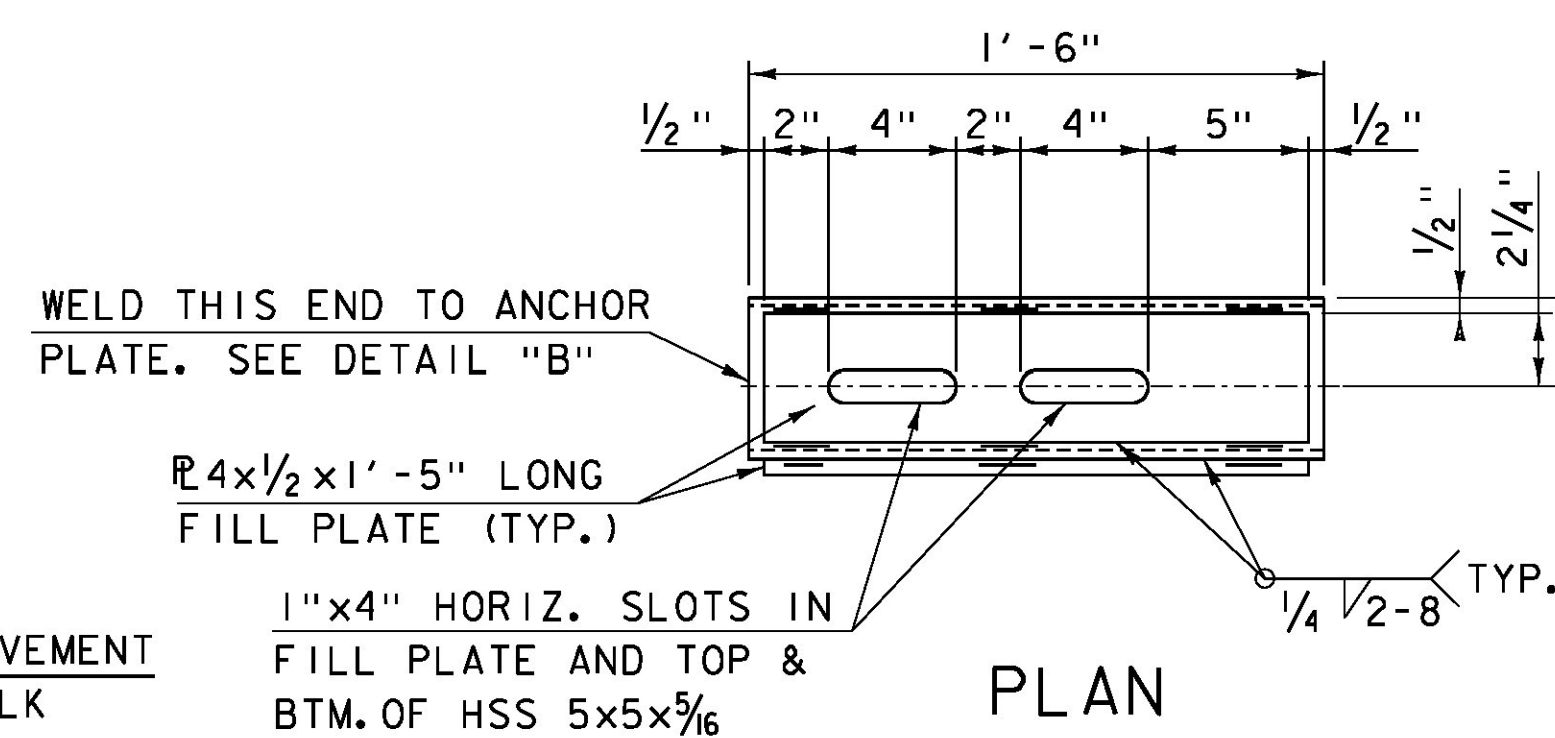
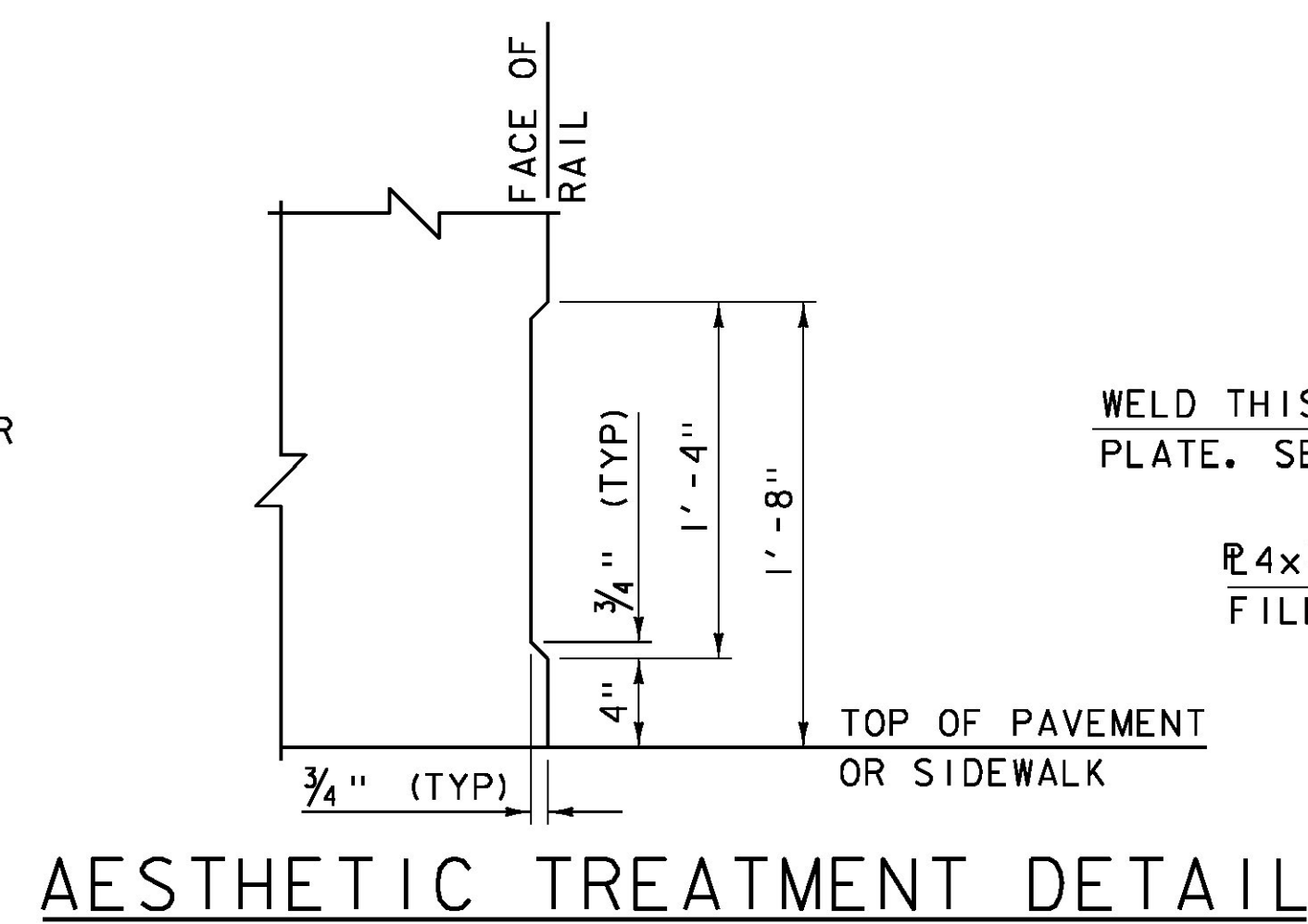


NOTES:

- BRIDGE RAIL SHALL HAVE A RUBBED FINISH IN ACCORDANCE WITH SECTION 501.
- HOLES AND RECESSES ARE TO BE FORMED OR CORED, PERCUSSION DRILLING IS NOT ALLOWED.
- ALL STEEL COMPONENTS SHALL BE COATED BLACK IN ACCORDANCE WITH ASTM D7803 FOLLOWING GALVANIZING.
- SEE STANDARD DRAWINGS S-352A, S-352B AND S-352C FOR ADDITIONAL INFORMATION AND REQUIREMENTS.
- AESTHETIC TREATMENT SHALL BE APPLIED TO BOTH SIDES OF THE RAIL.
- CONCRETE FOR BRIDGE RAIL SHALL BE CONCRETE, HIGH PERFORMANCE CLASS A AND WILL BE PAID FOR UNDER CONTRACT ITEM 525.45. REINFORCING STEEL SHALL MEET THE REQUIREMENTS OF SECTION 507 FOR LEVEL 1 REINFORCING AND WILL BE INCLUDED IN THE UNIT PRICE BID FOR CONTRACT ITEM 525.45.



NOTE:

- NF = NEAR FACE
- FF = FAR FACE
- EF = EACH FACE
- 2'-2" BAR LAP UNLESS OTHERWISE SPECIFIED ON PLANS.

PROJECT NAME: CORINTH
PROJECT NUMBER: BRO 1447(29)

FILE NAME: ...z01j292_br_app_ralldets.dgn PLOT DATE: 8/4/2014
PROJECT LEADER: G. BOGUE DRAWN BY: E. ALLING
DESIGNED BY: M. CHENETTE CHECKED BY: G. BOGUE
BRIDGE RAIL DETAILS 1 SHEET 40 OF 57

