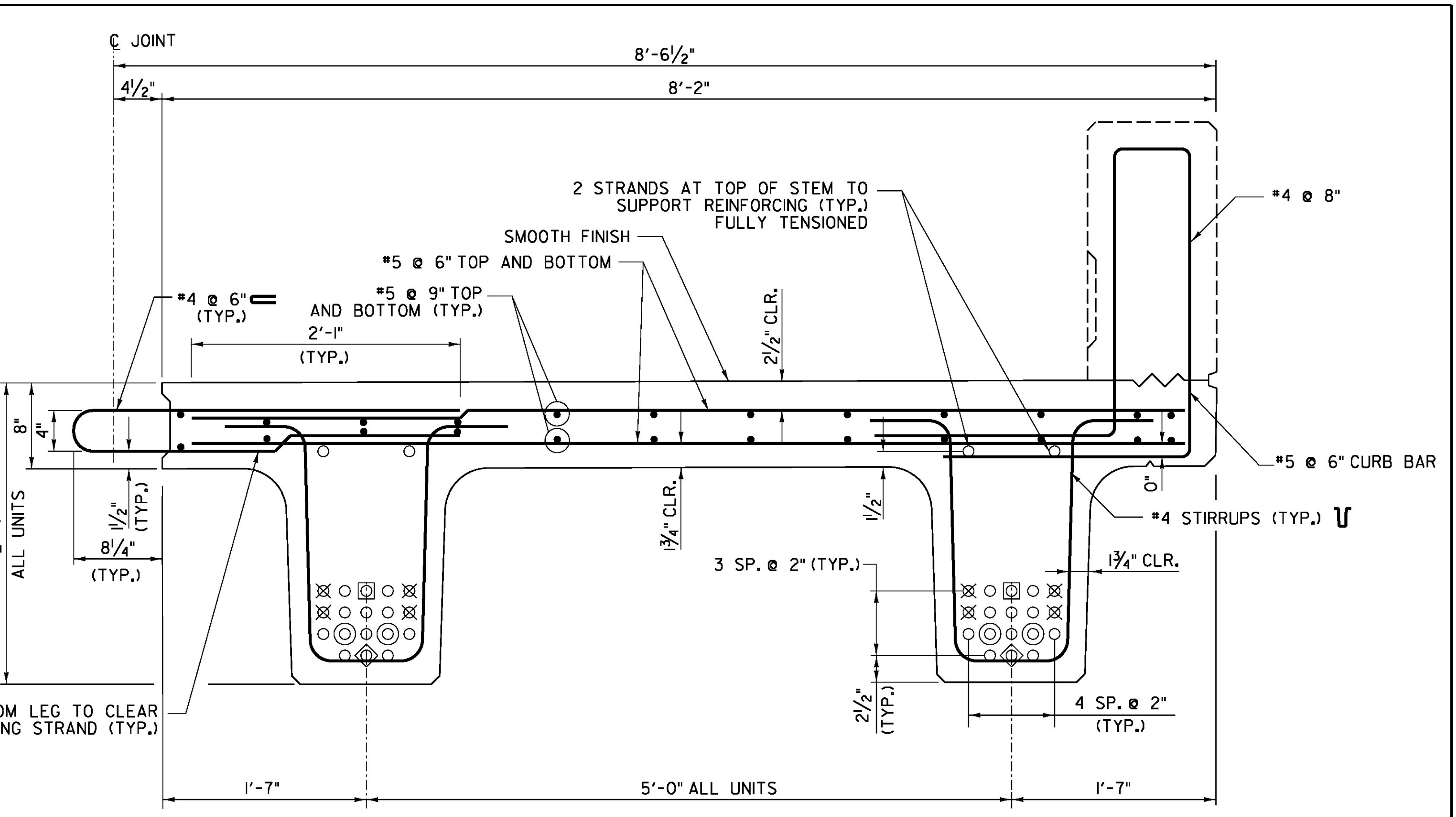
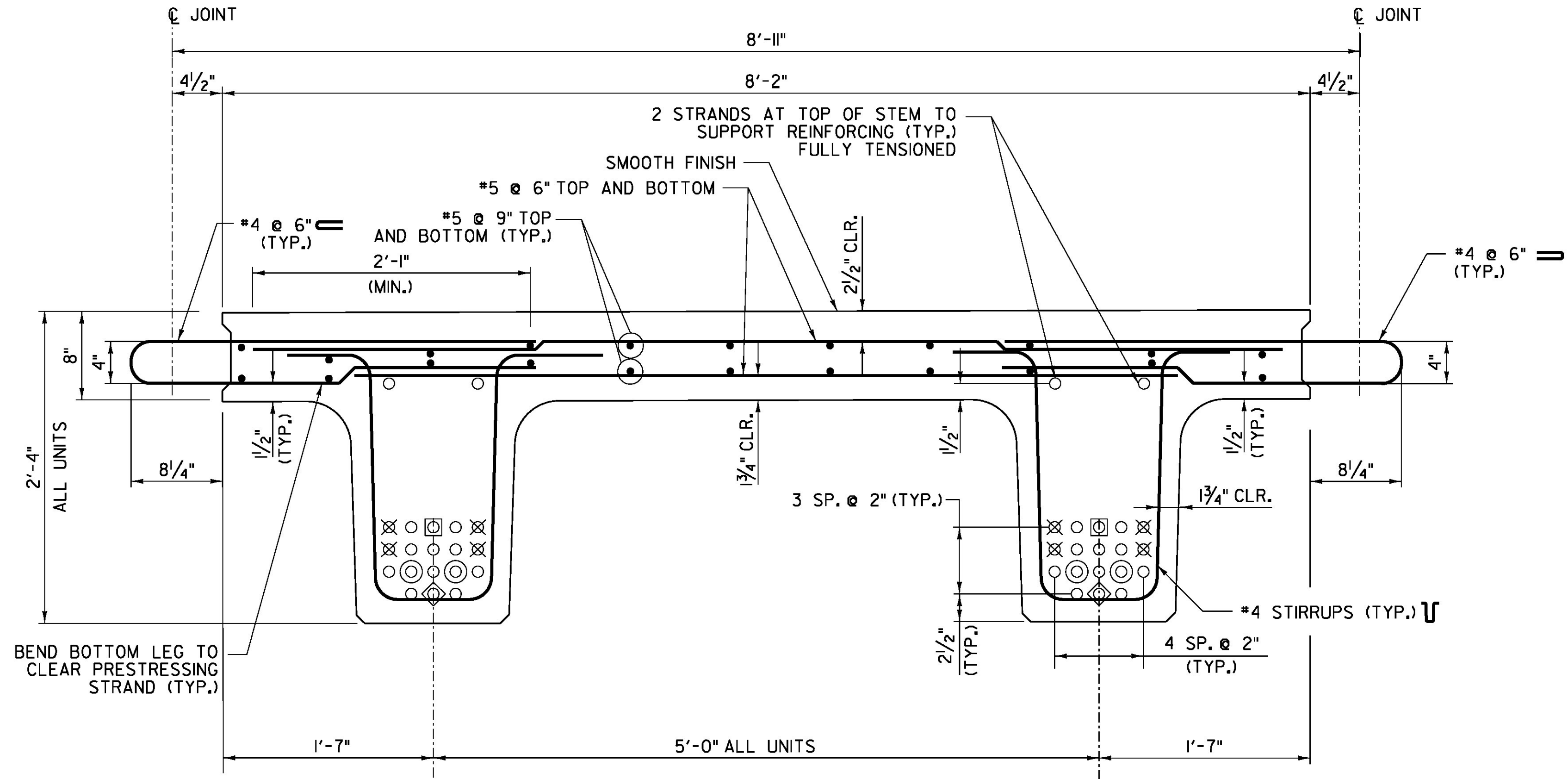


UNIT 1
TYPICAL BEAM REINFORCING
SCALE 1 1/2" = 1'-0"



UNIT 3
TYPICAL BEAM REINFORCING
SCALE 1 1/2" = 1'-0"



UNIT 2
TYPICAL BEAM REINFORCING
SCALE 1 1/2" = 1'-0"

- NOTES:
1. LEAVE SIX STRANDS 1'-6" LONG AT BOTH ENDS OF BEAM, SEE PRECAST CURTAIN WALL REINFORCING SECTION A-A ON SHEET 27.
 2. REINFORCING STEEL SHALL MEET THE REQUIREMENTS OF SECTION 507 FOR LEVEL II REINFORCING STEEL.

PROJECT NAME:	CORINTH
PROJECT NUMBER:	BRO 1447(29)
FILE NAME: ...z01j292_next_beam_dets.dgn	PLOT DATE: 8/4/2014
PROJECT LEADER: G. BOGUE	DRAWN BY: L. BUXTON
DESIGNED BY: G. BOGUE	CHECKED BY: T. KNIGHT
NEXT BEAM DETAILS 2	SHEET 26 OF 57



8/4/2014 12:33:50 PM V:\9533\cctive\95330795\transportation\drawing\z01j292_next_beam_dets.dgn