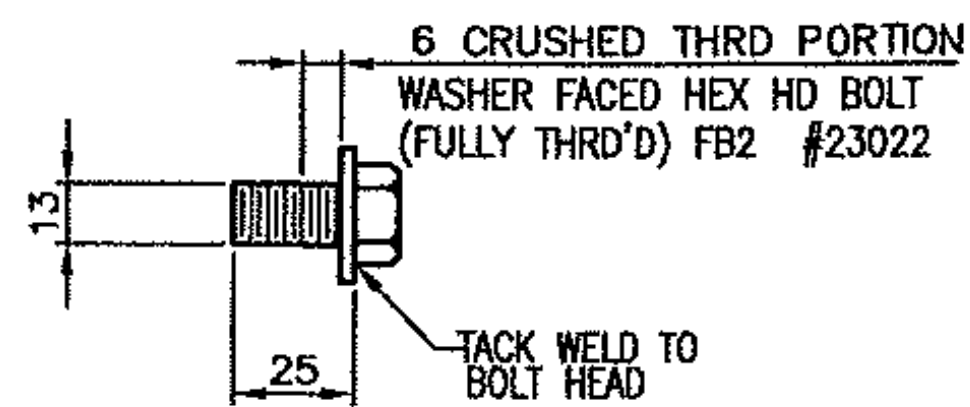
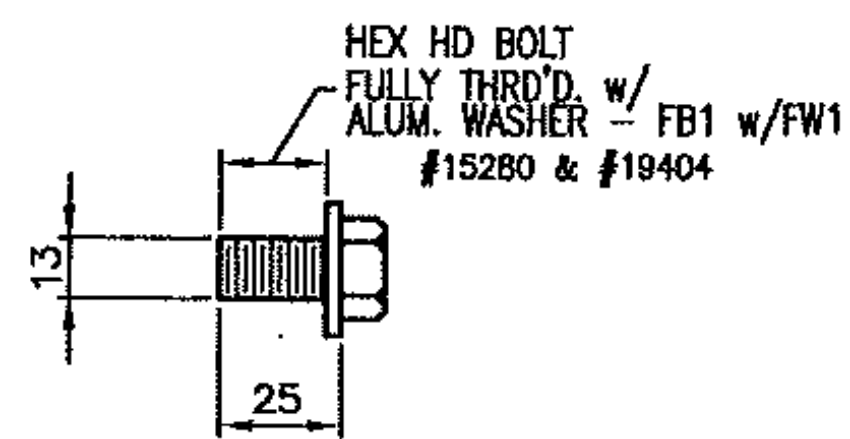


ONE REQ'D. ~ RAIL 'MR9'
(BACK ELEVATION VIEW)

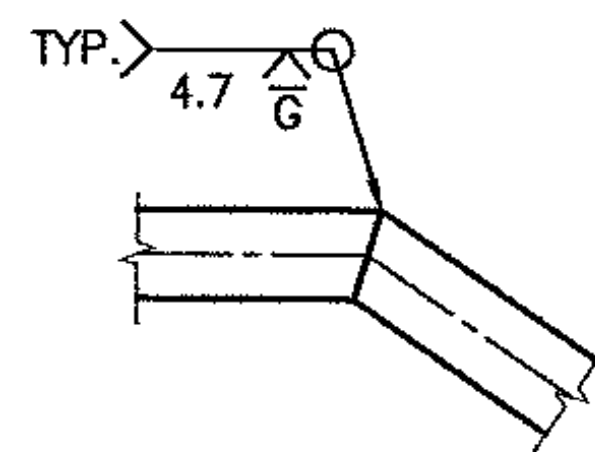
(OAL ALONG LONGEST EDGE = 4129 + 762 (FOR SHOP BENDING = 4891))

ONE REQ'D. ~ RAIL 'BR9'
(BACK ELEVATION VIEW)

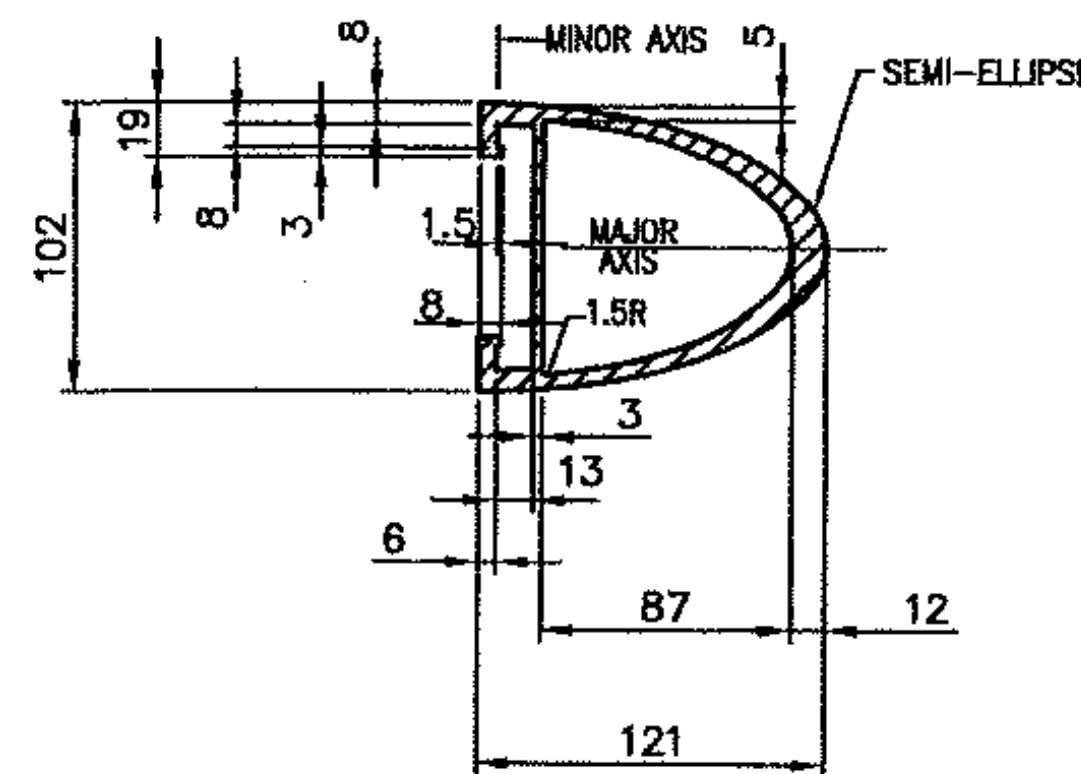
(OAL ALONG LONGEST EDGE = 4124 + 762 (FOR SHOP BENDING = 4886))



SPlice BOLT DETAILS



TYPICAL WELD DETAIL
(OPTIONAL IF REQ'D.)



TYPICAL SECTION
(BARRIER RAIL)

Vermont Agency of Transportation

RECEIVED

CK'D BY WDL OK'D BY GS

7:54 am, Jul 13, 2011

RESUBMIT APPROVED X
BY CWC, Proj. Mgr. DATE 07/13/11

ANODIZED
(SEE NOTES ON LB1)

PROJECT No. STP 0199 (2) ITEM No: 621.745

APPROVED: _____ REC'D APPROVAL _____
DRAWING

L.B. FOSTER COMPANY
1016 GREENTREE ROAD
PITTSBURGH, PENNSYLVANIA 15220

FOR: F. R. LAFAYETTE, INCORPORATED
VERMONT AGENCY OF TRANSPORTATION
TOWN OF HINESBURG, COUNTY OF CHITTENDEN, VT
APPROACH RAILING FOR BRIDGE #10, TOWN HIGHWAY 4 (MAJ. COLLECTOR) CLASS 2
3L ALUMINUM APPROACH RAIL - RAIL DETAILS

MADE CMS DATE 06/21/11 JOB No. AR0689 CUST. No. _____
CHECK Dd. DATE 06/28/11 DRAWING LB15 REV. No. _____

REV.	DESCRIPTION	BY	DATE