

**GENERAL NOTES**  
 ALL MATERIAL AND WORKMANSHIP SHALL BE IN ACCORDANCE WITH VERMONT AGENCY OF TRANSPORTATION STANDARD SPECIFICATIONS FOR CONSTRUCTION DATED 2006 AND ITS LATEST REVISIONS.

DESCRIPTION	ASTM	ALLOY/GR.	REMARKS
RAILS, POSTS, SPLICES, CLAMP BARS, FINIS, & BALUSTER FRAMES	B221	6061-T6 OR 6351-T5	MIN. YIELD STRENGTH $F_y = 240 \text{ MPa}$
BALUSTERS	B221	6061 OR 6063	T4 - USED FOR SUPERIOR EXPANDING QUALITIES
ANCHOR PLATE	A569		COMMERCIAL QUALITY (PLAIN)
SET SCREWS FOR BALUSTERS	F880	TYPE 303	
STAINLESS STEEL BOLTS	A193	GRADE B8	
STAINLESS HEX NUTS	A194	GRADE B8	
ANCHOR U-BOLTS	A449		GALV. A153
STEEL HEX. NUTS	A563	GRADE DH	GALV. A153
STEEL WASHERS	F436		GALV. A153
PLATE WASHERS	B209	2024-T3	ALCLAD
ALUMINUM WASHERS	B209	2024-T3	ALCLAD
END CAPS	B26		356-F
ELECTRODES FOR WELDING		AWS A5.10 ER5356	

POSTS TO BE NORMAL TO GRADE AND RAILS SHALL BE PARALLEL TO GRADE. RAILS TO BE ATTACHED TO A MINIMUM OF THREE POSTS WHEN POSSIBLE.

ALL RAILS AND WELDS TO BE FREE FROM ALL BURRS AND ROUGH EDGES. ENDS OF TUBE SECTIONS SHALL BE SAWED OR MILLED. GRIND ALL CUT EDGES SMOOTH.

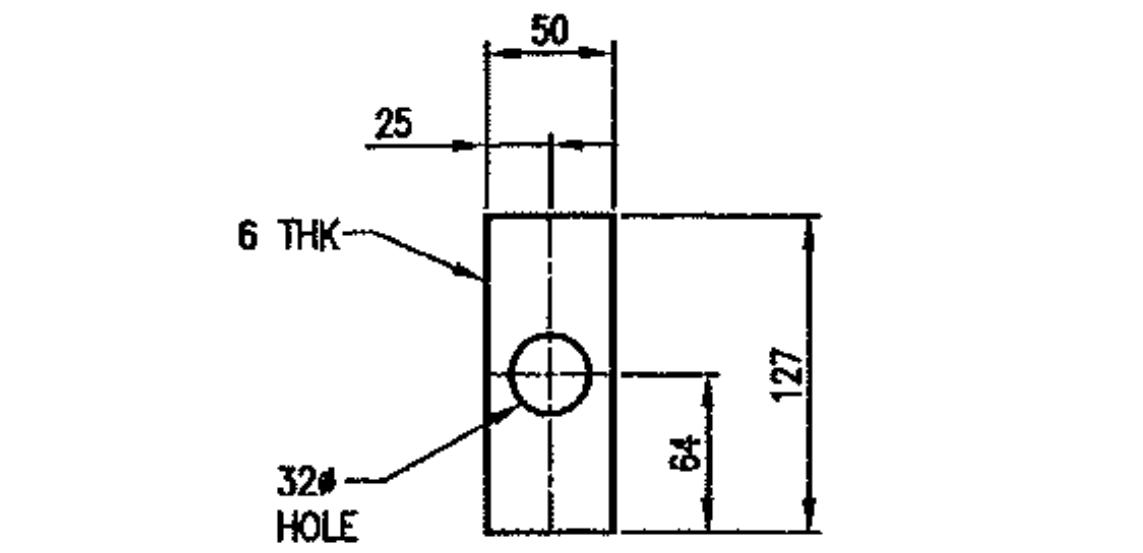
ALL THREADS TO BE UNC CLASS 2A/2B.

ALL EXTRUSION TOLERANCES NOT SHOWN SHALL BE IN ACCORDANCE WITH ASTM B221.

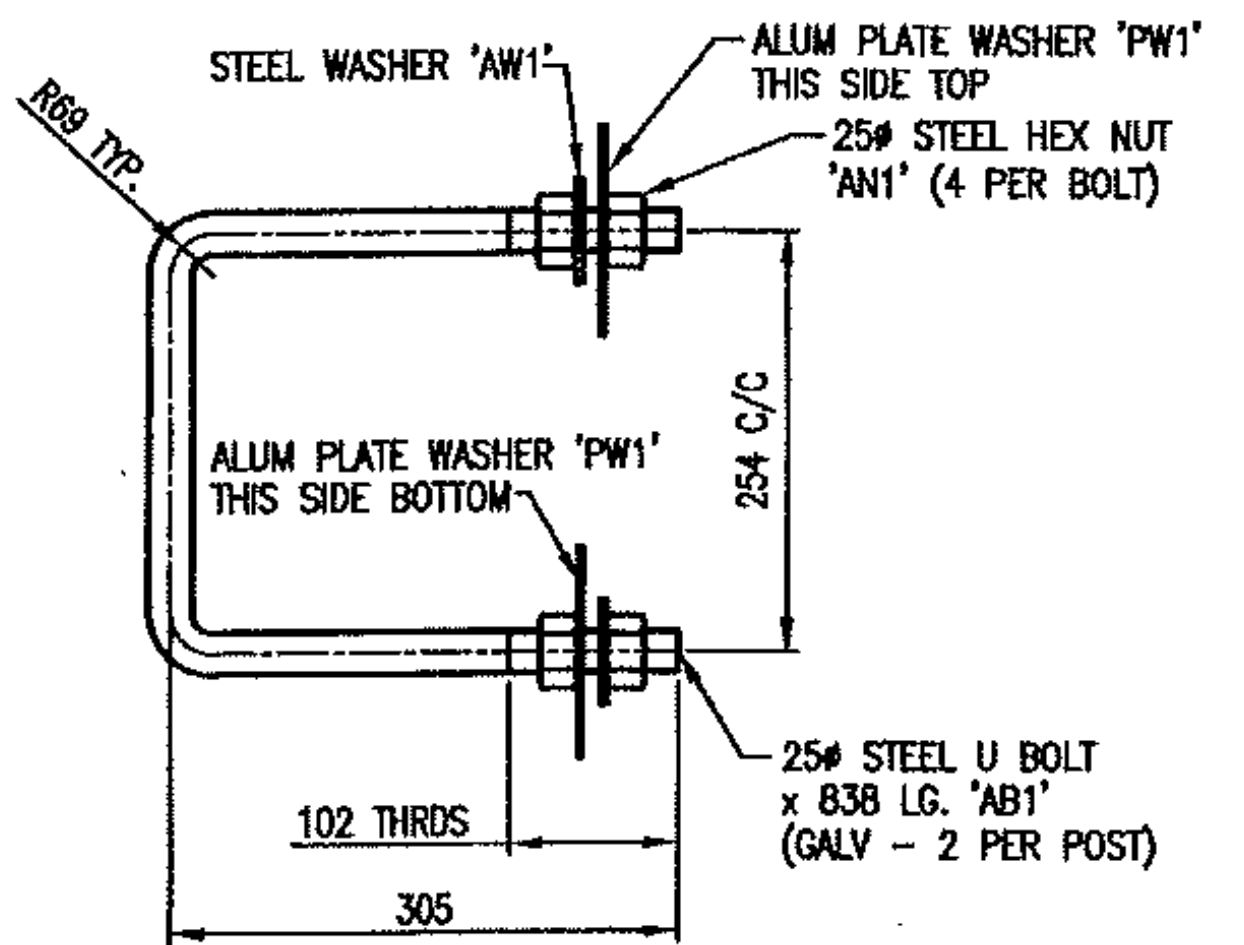
IF CUT THREADS ARE USED, BOLT DIAMETER SHALL NOT BE LESS THAN NOMINAL DIAMETER. IF ROLLED THREADS ARE USED, BOLT DIAMETER SHALL NOT BE LESS THAN THE ROOT DIAMETER OF THREADS.

THE SPLICE BAR SHALL BE ATTACHED TO THE RAIL ELEMENT AS FOLLOWS: THE RAIL SPLICE AT THE BRIDGE EXPANSION JOINT SHALL BE FASTENED ON BOTH SIDES OF THE RAIL SPLICE USING THE FULLY THREADED WASHER FACED BOLTS, TIGHTENED SECURELY TO THE END OF THREADS, AND LEAVING A 3mm GAP, THIS ALLOWS EXPANSION ON BOTH SIDES OF THE JOINT.

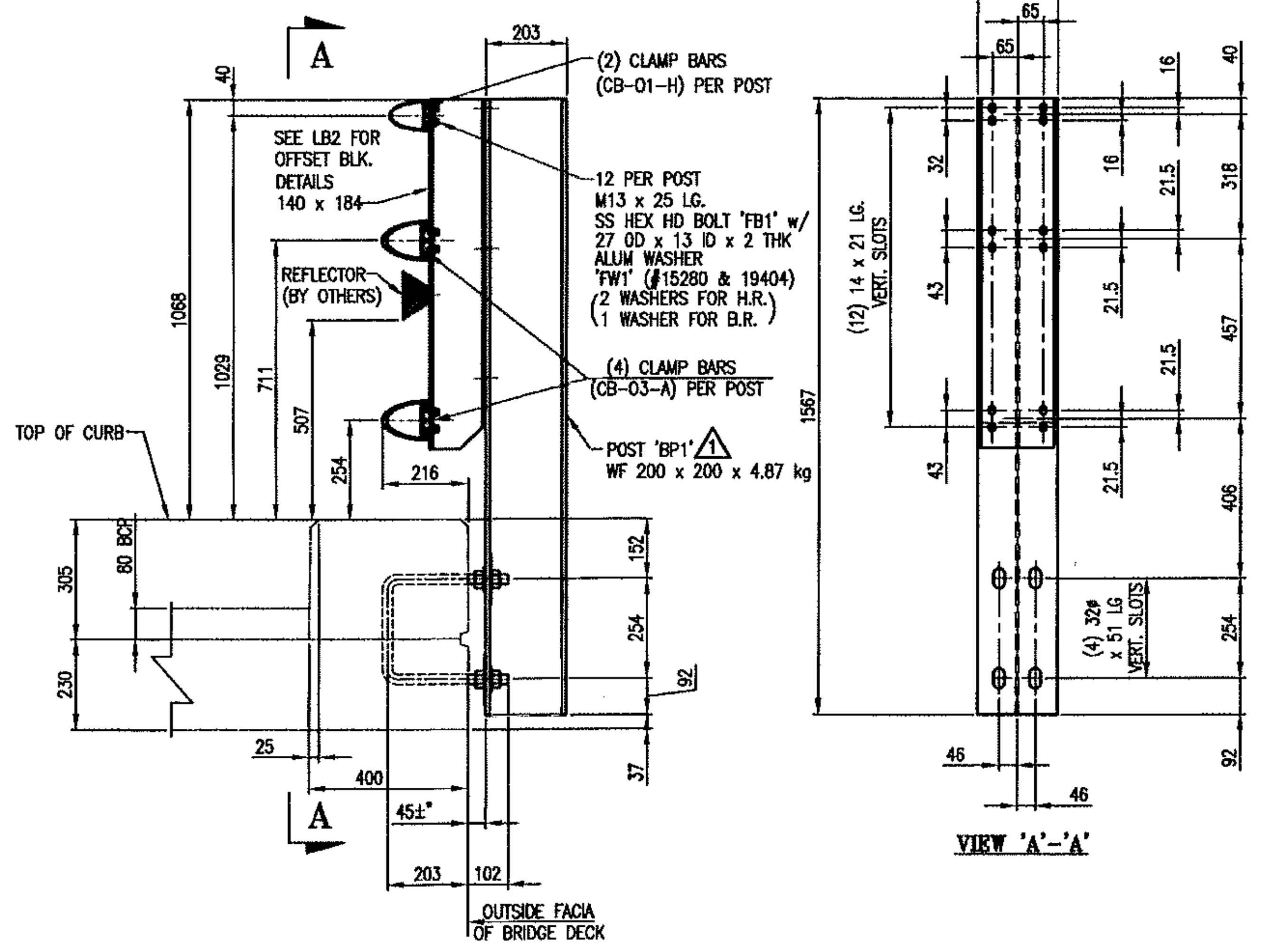
ALL NUTS SHALL COMPLY WITH AMERICAN HEXAGON ANSI SPECIFICATIONS B18.2 FASTENERS & HOLES WILL BE SUPPLIED IN STANDARD US EQUIVALENT UNITS FOR THE METRIC DESIGNATIONS.



92 ~ REQ'D ALUM. PLATE WASHER 'PW1'



46 ~ REQ'D ANCHOR BOLTS AB1



23 ~ REQ'D FABRICATED BRIDGE POSTS BP1 (SPECIAL) (CURB)

**ANODIZED**

- ALL ALUM. COMPONENTS SHALL BE ANODIZED TO A BLACK (HARD SATIN FINISH) COLOR, FED. STD. COLOR No. 27038. THE ANODIC COATING SHALL BE ARCHITECTURAL CLASS I WITH A MIN. THICKNESS OF 0.7 mils AND A MIN. WEIGHT OF 35 mg/sq in.
- ALL VISIBLE STN. STL. HARDWARE SHALL BE FIELD PAINTED BLACK TO MATCH THE ANODIZED RAIL. TOUCH UP PAINT SHALL BE PROVIDED.
- SAMPLES SHALL BE SUBMITTED FOR THE ENGINEER'S APPROVAL.

Vermont Agency of Transportation  
**RECEIVED**

CK'D BY WDL OK'D BY GS

7:54 am, Jul 13, 2011

RESUBMIT APPROVED X  
 BY CWC, Proj. Mgr. DATE 07/13/11  
 PROJECT No. STP 0199 (2) ITEM No. 525.225

APPROVED: \_\_\_\_\_ REC'D APPROVAL \_\_\_\_\_  
 DRAWING

**L.B. FOSTER COMPANY**  
 1016 GREENTREE ROAD  
 PITTSBURGH, PENNSYLVANIA 15220

FOR: F. R. LAFAYETTE, INCORPORATED  
 VERMONT AGENCY OF TRANSPORTATION

TOWN OF HINESBURG, COUNTY OF CHITTENDEN, VT  
 BRIDGE RAILING FOR BRIDGE #10, TOWN HIGHWAY 4 (WAL. COLLECTOR) CLASS 2  
 3L ALUM. BRIDGE RAILING ~ GENERAL NOTES & TYP. DETAILS

REV.	DESCRIPTION	BY	DATE
07		CMS	07/12/11
11			

MADE CMS DATE 06/15/11 JOB No. AR0689 CUST. No. \_\_\_\_\_  
 CHECK\_Dd DATE 06/28/11 DRAWING LB1 INV. No. ONE