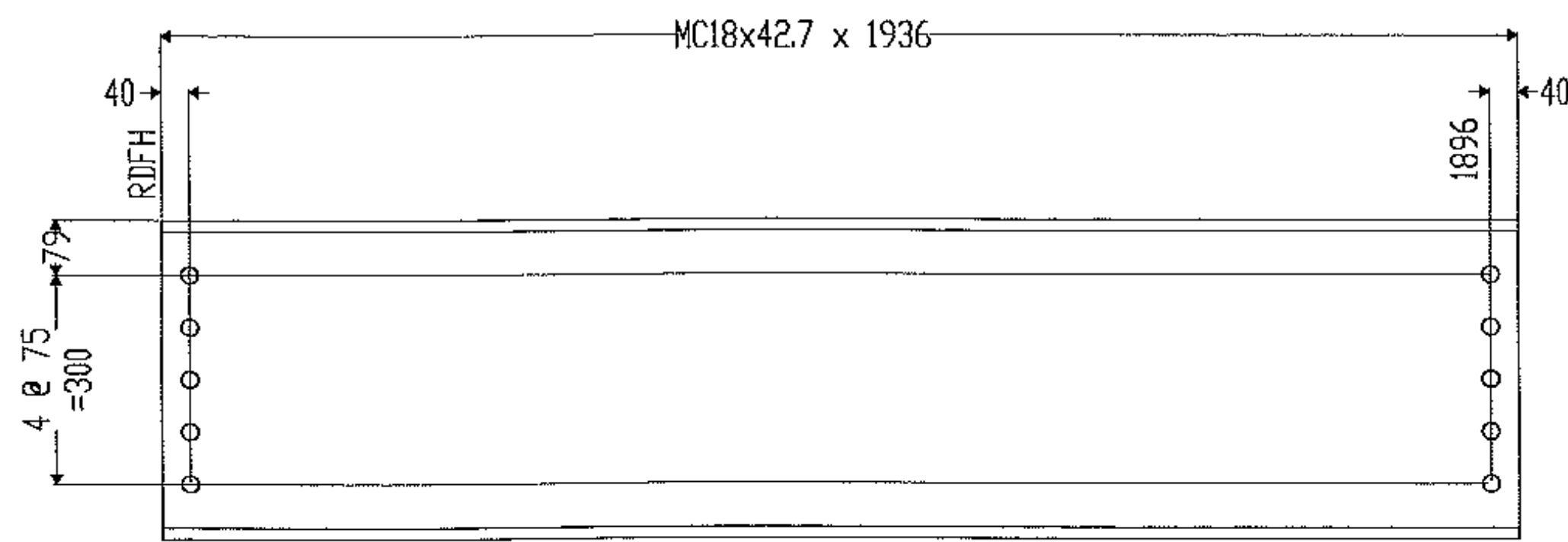


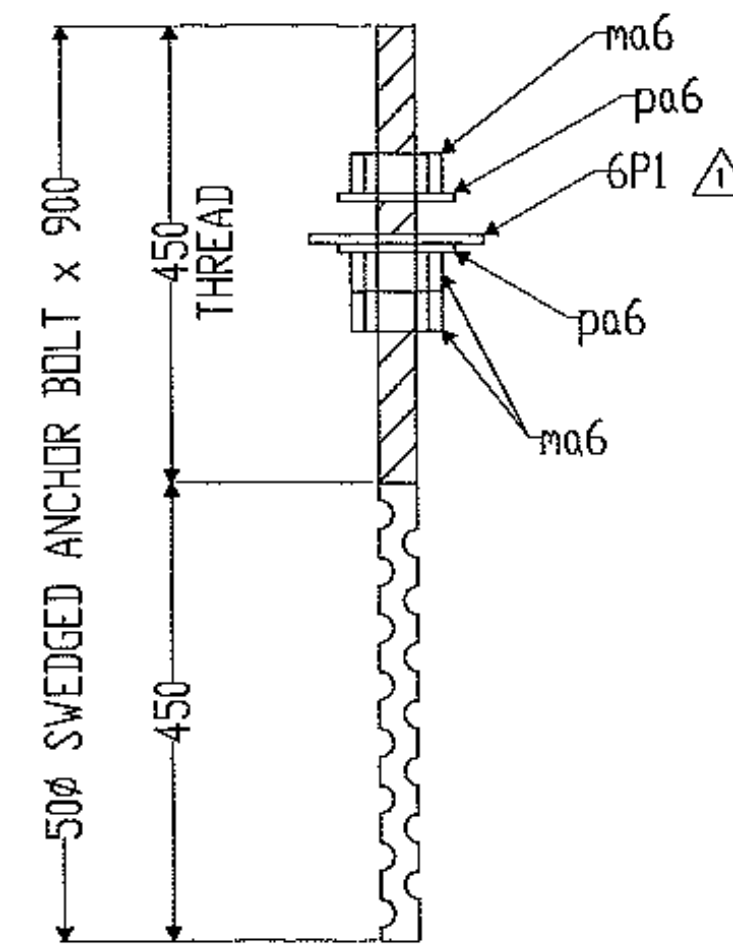
STRUCTURAL STEEL

84



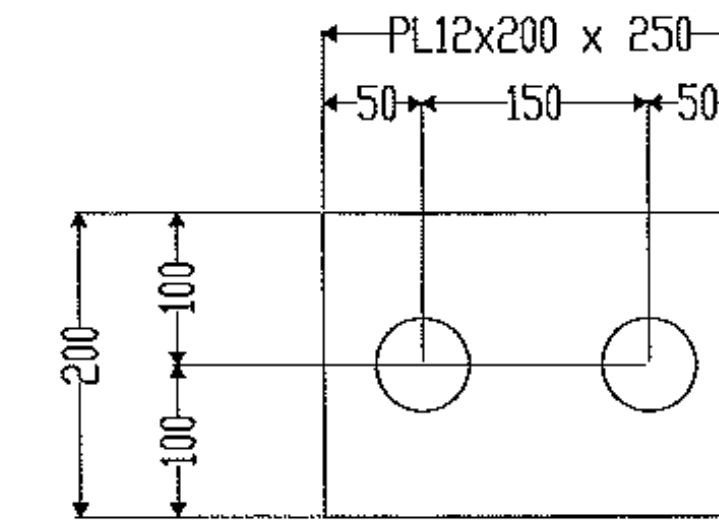
12 ~ DIAPHRAGMS ~ 6D1

3 COAT



20 ~ ANCHOR BOLTS ~ 6M1

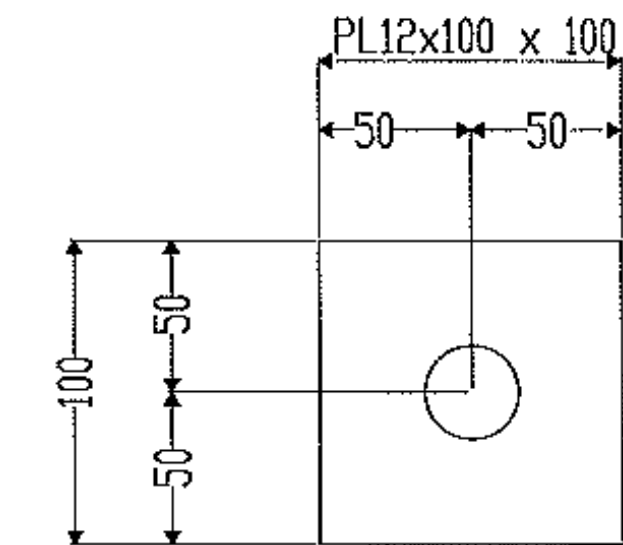
GALVANIZED



10 ~ LEVELING PLATE ~ 6P1

HOLES TO BE 60mmØ  
PRIMER ONLY

SHIPPER		BILL OF MATERIAL						
NO.	MARK	NO.	MARK	SIZE	LENGTH	REMARKS	ITEM	WEIGHT
12	6D1			MC18x42.7	1936			
20	6M1			50Ø SWEDGED ANCHOR BOLT	900	GALV A307		
		60	ma6	50Ø HHN		GALV		
		40	pa6	PL12x100	100	M270 GR 250		
10	6P1			PL12x200	250	M270 GR 250		



DETAIL OF "pa6"

HOLES TO BE 55mmØ  
PRIMER ONLY

Vermont Agency of Transportation

RECEIVED

CK'D BY WDL OK'D BY GS

8:02 am, Jul 25, 2011

RESUBMIT APPROVED X

BY CWC DATE 07/25/11

SHOP NOTE: DIM'S SHOWN  
ARE IN METRIC (mm)

SHOP NOTES  
HOLES: 24Ø UDN  
BOLTS: PER GNI  
PAINT: PER GNI  
WELDS: N.A.  
MATERIAL: M270 GR.50 UDN

3		
2		
1	7.21.11	APPROVER COMMENTS
REV. NO.	DATE	REVISION

DIAPHRAGM DETAIL  
SILVER ST. BRDG - HINESBURG  
STATE OF VERMONT  
PROJECT No. STP 0189(2)

PRECISE STRUCTURAL PRODUCTS  
3 FARM LANE  
GEORGETOWN, MA 01833  
978-352-2591

OWNER: VT AGENCY OF TRANSPORTATION  
CONTRACTOR: A.L. ST.ONCE CONTRACTORS, INC

DRAWN BY	CHECKED BY	APP.	SHOP	DIST.	CONTRACT NO.	SHEET NO.
KC	WL				3578	6
06/24/11	06/28/11					