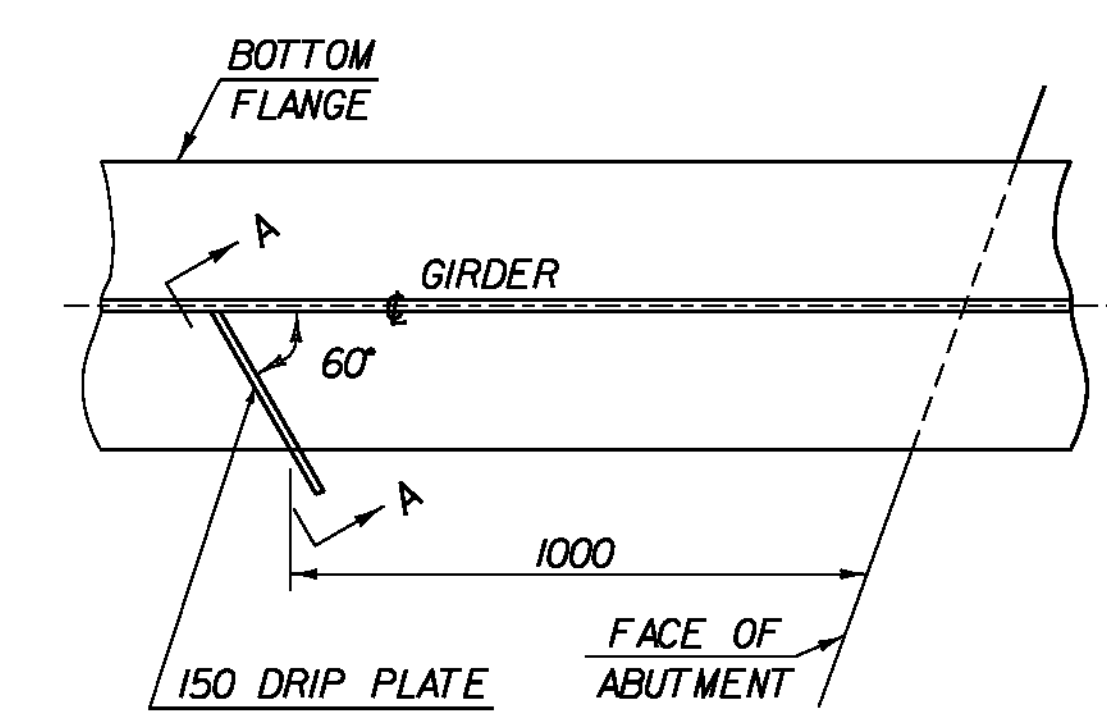
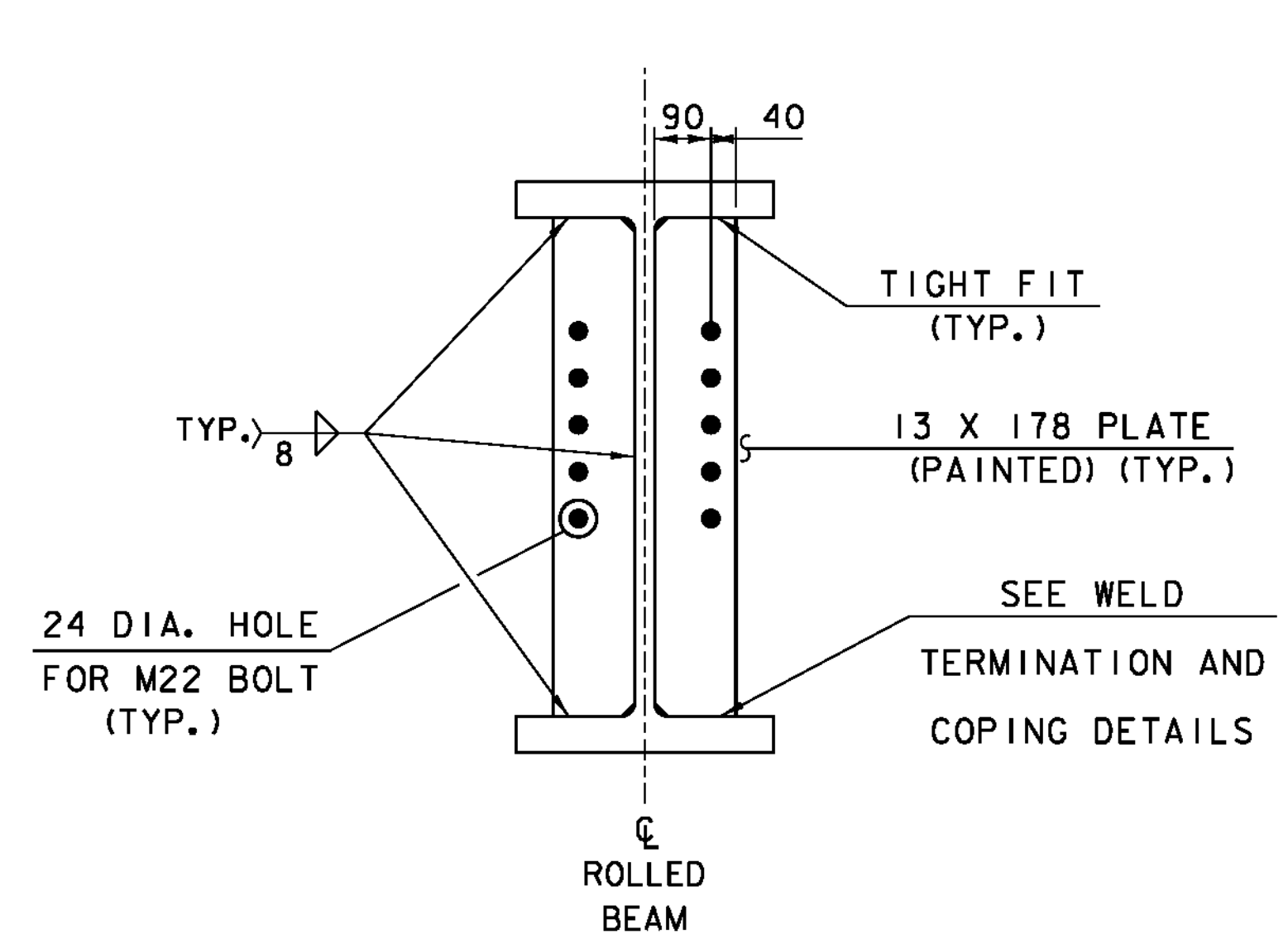


SECTION A - A



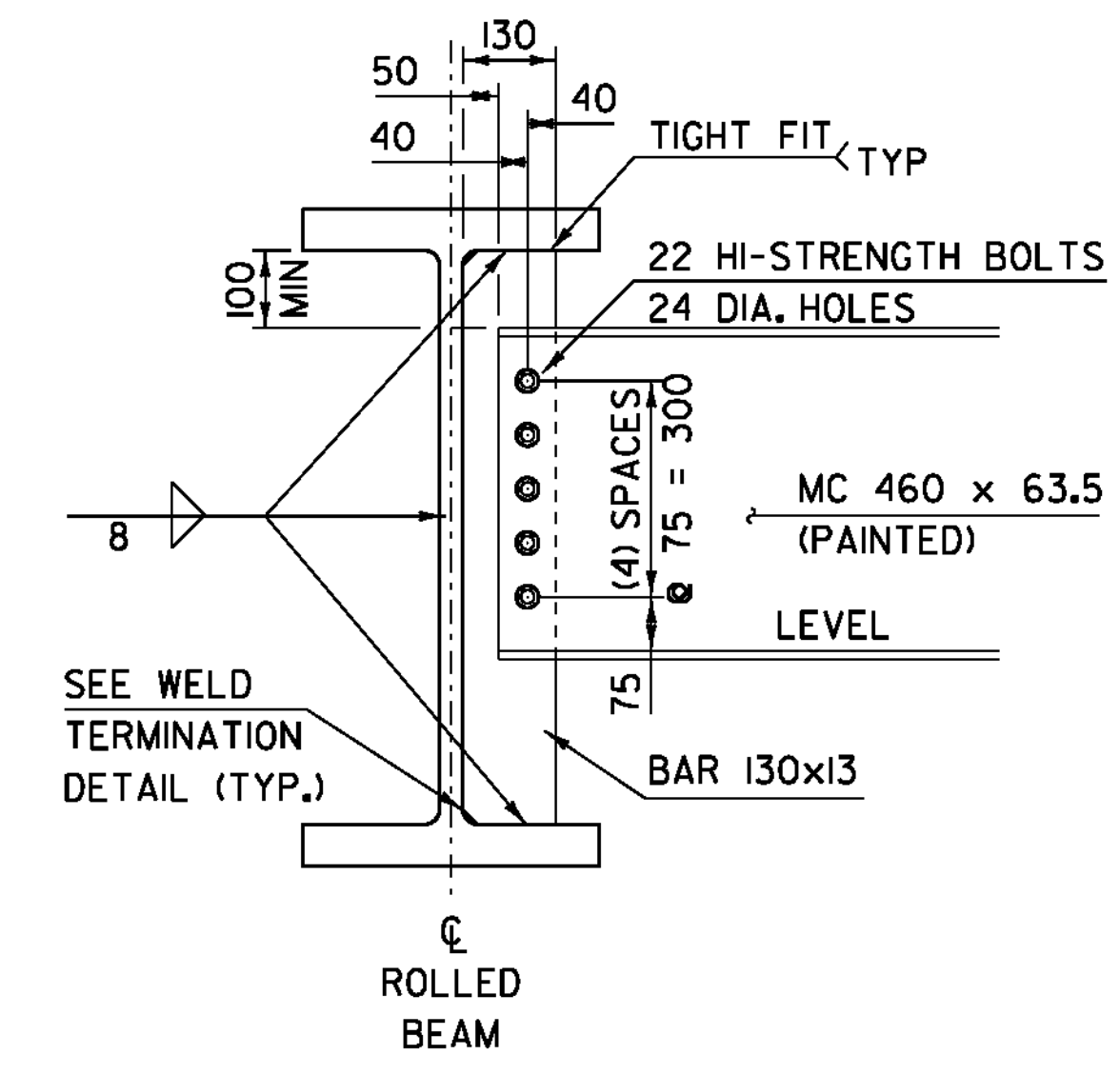
PLAN DRIP PLATE

NOTE: DRIP PLATES SHALL BE PLACED ON OUTSIDE EDGE OF FASCIA GIRDERS ON THE HIGH SIDE OF ALL PIERS AND ABUTMENTS OR AS INDICATED ON PROJECT PLANS.



INTERMEDIATE DIAPHRAGMS CONNECTION PLATE DETAIL

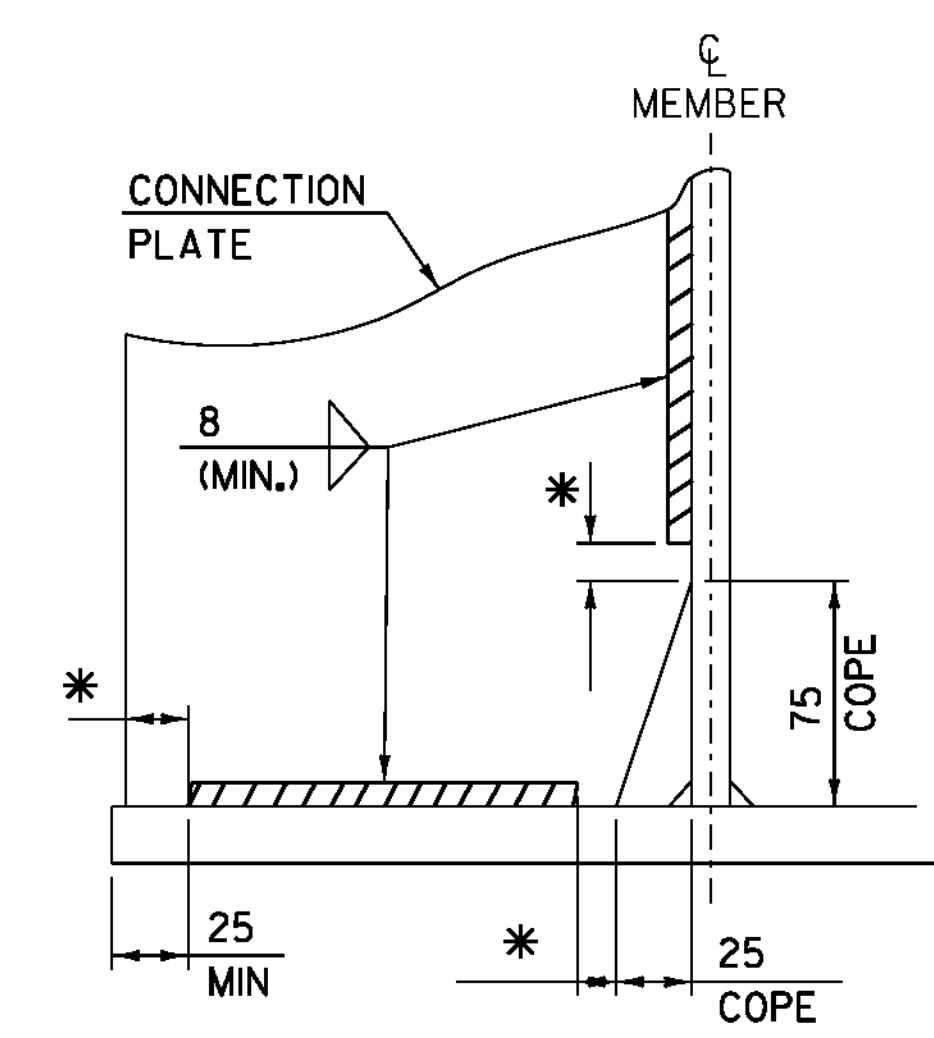
NTS



NOTE: HI-STRENGTH BOLTS, NUTS AND WASHERS SHALL CONFORM TO AASHTO DESIGNATION M164M

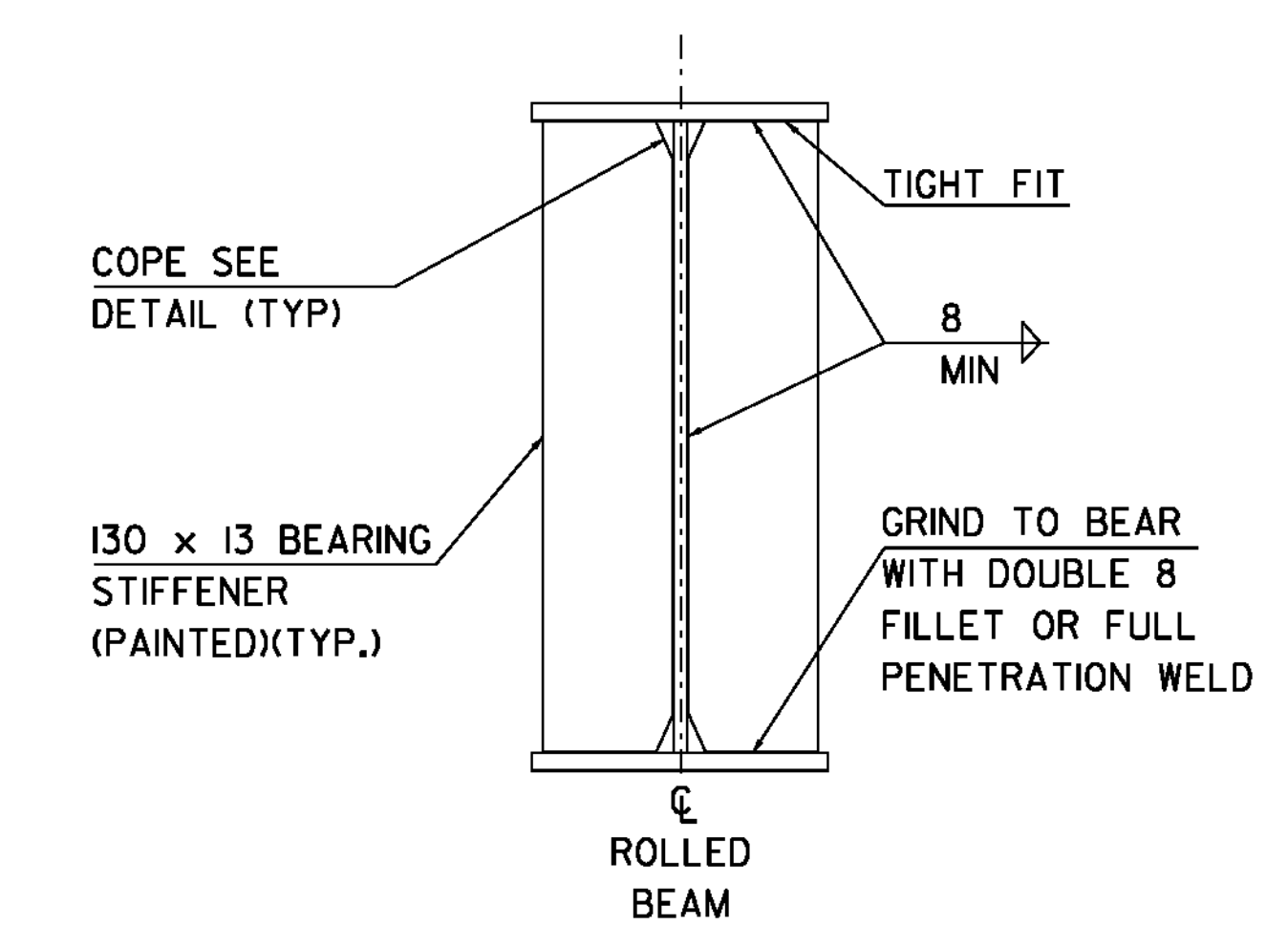
INTERMEDIATE DIAPHRAGMS FOR 840 BEAM

NTS



WELD TERMINATION AND COPING DETAILS FOR STEEL MEMBERS

NTS



ABUTMENT BEARING STIFFENERS

NTS

PROJECT NAME: HINESBURG	PLOT DATE: 02-MAR-2011
PROJECT NUMBER: STP 0199(2)	DRAWN BY: C. MOONEY
FILE NAME: 01J282/str/s01J282 str.dgn	CHECKED BY: C. CARLSON
PROJECT LEADER: C. CARLSON	SHEET 21 OF 56
DESIGNED BY: W. LAMMER	
FRAMING PLAN	