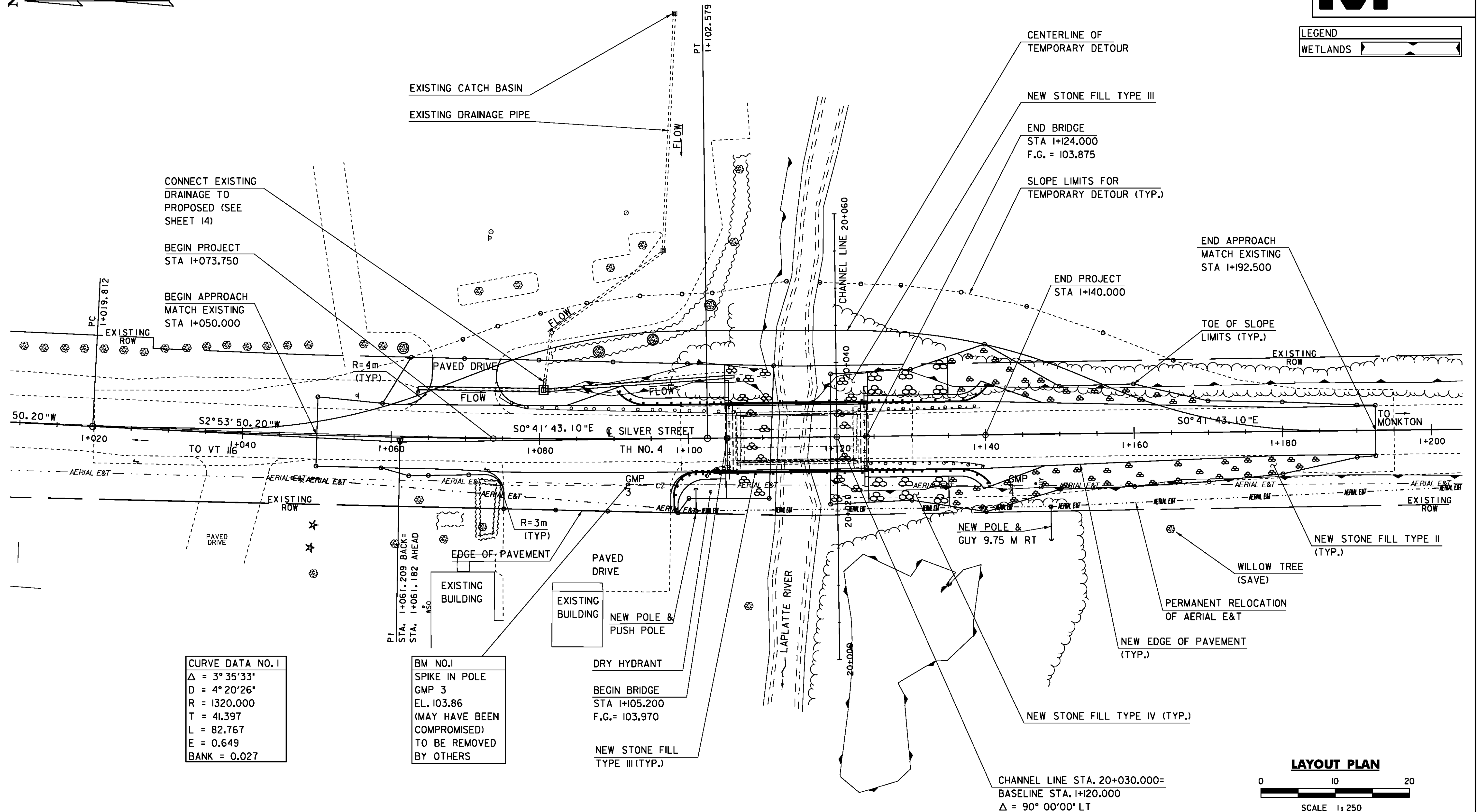


LEGEND	
WETLANDS	

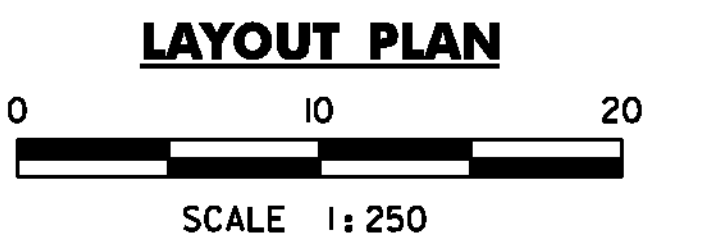


CURVE DATA NO. 1	
$\Delta = 3^\circ 35' 33''$	
$D = 4^\circ 20' 26''$	
$R = 1320.000$	
$T = 41.397$	
$L = 82.767$	
$E = 0.649$	
$BANK = 0.027$	

BM NO. 1	
SPIKE IN POLE	
GMP 3	
EL. 103.86	
(MAY HAVE BEEN COMPROMISED)	
TO BE REMOVED BY OTHERS	

DRY HYDRANT
 BEGIN BRIDGE
 STA 1+105.200
 F.G. = 103.970
 NEW STONE FILL
 TYPE III (TYP.)

NEW POLE & GUY 9.75 M RT
 NEW STONE FILL TYPE IV (TYP.)



450 mm OPTION PIPE
 STA. 1+063.50 LT - STA. 1+079.90 LT
 STA. 1+081.10 LT - STA. 1+108.07 LT

PRECAST REINFORCED CONCRETE
 PIPE DI W/ CAST IRON GRATE
 STA. 1+080.50 LT

BRIDGE RAILING, ANODIZED 3 RAIL ALUMINUM
 STA. 1+103.475 RT - STA. 1+124.125 RT
 STA. 1+105.075 LT - STA. 1+124.125 LT

RELOCATE MAILBOX, SINGLE SUPPORT
 STA. 1+073 RT

ALUMINUM APPROACH RAILING, ANODIZED
 STA. 1+090.400 LT - STA. 1+105.075 LT
 STA. 1+098.020 RT - STA. 1+103.475 RT
 STA. 1+124.125 RT - STA. 1+140.625 RT
 STA. 1+124.125 LT - STA. 1+140.470 LT

100mm WHITE LINE
 STA. 1+020.0 LT - STA. 1+195.0 LT
 STA. 1+020.0 RT - STA. 1+195.0 RT

100mm YELLOW LINE (DOUBLE CENTERLINE)
 STA. 1+020.0 - STA. 1+195.0

REMOVAL AND DISPOSAL OF GUARDRAIL
 STA. 1+074.47 LT - STA. 1+106.27 LT
 STA. 1+102.17 RT - STA. 1+105.60 RT
 STA. 1+122.87 LT - STA. 1+139.29 LT
 STA. 1+123.12 RT - STA. 1+139.80 RT

CONSTRUCT DRIVE
 STA. 1+061.50 LT - STA. 1+078.30 LT
 STA. 1+072.25 RT - STA. 1+100.60 RT

STONE FILL, TYPE II
 STA. 1+135.0 RT - STA. 1+190.0 RT
 STA. 1+135.0 LT - STA. 1+170.0 LT

STONE FILL, TYPE IV
 STA. 1+124.2 RT - STA. 1+135.0 RT
 STA. 1+124.2 LT - STA. 1+135.0 LT

DECIDUOUS TREES (ACER SACCHARUM)
 (B&B) 100mm CAL)
 STA. 1+062 LT
 STA. 1+089 LT
 STA. 1+096 LT
 STA. 1+103 LT

YIELDING MARKER POSTS
 STA. 1+063.525 LT
 STA. 1+106.790 LT

REMOVE TREES (PAID UNDER ITEM 201.10)
 STA. 1+062 LT
 STA. 1+089 LT
 STA. 1+096 LT
 STA. 1+103 LT

EXISTING BRIDGE DATA	
SINGLE SPAN BRIDGE WITH A STEEL BEAM AND CONCRETE DECK SUPERSTRUCTURE ON CONCRETE ABUTMENTS.	
CLEAR SPAN 16.44M.	
FASCIA TO FASCIA WIDTH 7.0M.	

PROJECT NAME:	HINESBURG	FILE NAME:	01J282/str/s01J282bdr.dgn	PLOT DATE:	02-MAR-2011
PROJECT NUMBER:	STP 0199(2)	PROJECT LEADER:	C. CARLSON	DRAWN BY:	C. MOONEY
		DESIGNED BY:	W. LAMMER	CHECKED BY:	C. CARLSON
		LAYOUT PLAN		SHEET 10	OF 56