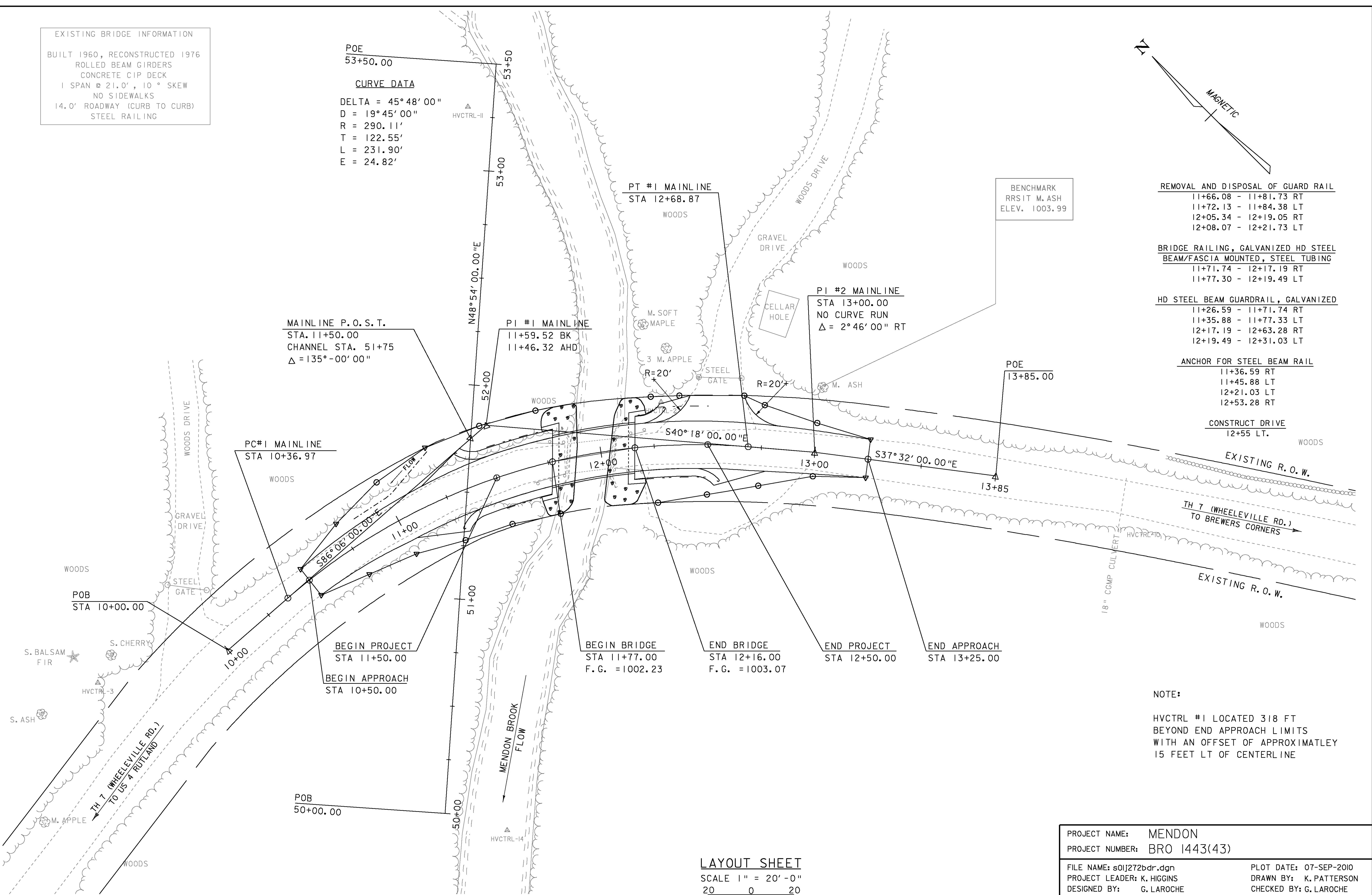
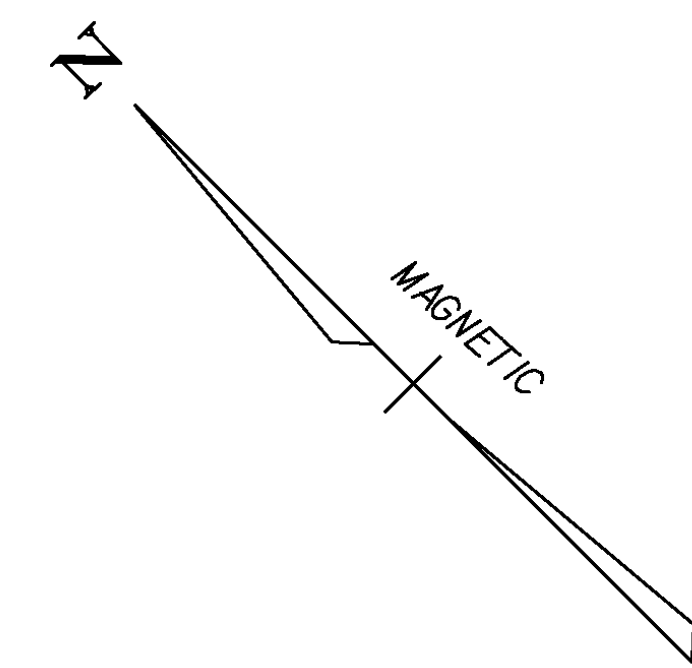


EXISTING BRIDGE INFORMATION
 BUILT 1960, RECONSTRUCTED 1976
 ROLLED BEAM GIRDERS
 CONCRETE CIP DECK
 1 SPAN @ 21.0', 10° SKEW
 NO SIDEWALKS
 14.0' ROADWAY (CURB TO CURB)
 STEEL RAILING

POE
 53+50.00

CURVE DATA
 DELTA = 45° 48' 00"
 D = 19° 45' 00"
 R = 290.11'
 T = 122.55'
 L = 231.90'
 E = 24.82'



- REMOVAL AND DISPOSAL OF GUARD RAIL
 - 11+66.08 - 11+81.73 RT
 - 11+72.13 - 11+84.38 LT
 - 12+05.34 - 12+19.05 RT
 - 12+08.07 - 12+21.73 LT
- BRIDGE RAILING, GALVANIZED HD STEEL BEAM/FASCIA MOUNTED, STEEL TUBING
 - 11+71.74 - 12+17.19 RT
 - 11+77.30 - 12+19.49 LT
- HD STEEL BEAM GUARDRAIL, GALVANIZED
 - 11+26.59 - 11+71.74 RT
 - 11+35.88 - 11+77.33 LT
 - 12+17.19 - 12+63.28 RT
 - 12+19.49 - 12+31.03 LT

- ANCHOR FOR STEEL BEAM RAIL
 - 11+36.59 RT
 - 11+45.88 LT
 - 12+21.03 LT
 - 12+53.28 RT

CONSTRUCT DRIVE
 12+55 LT.

NOTE:
 HVCTRL #1 LOCATED 318 FT BEYOND END APPROACH LIMITS WITH AN OFFSET OF APPROXIMATELY 15 FEET LT OF CENTERLINE

PROJECT NAME: MENDON
 PROJECT NUMBER: BRO 1443(43)

FILE NAME: s01j272bdr.dgn
 PROJECT LEADER: K. HIGGINS
 DESIGNED BY: G. LAROCHE
 LAYOUT SHEET

PLOT DATE: 07-SEP-2010
 DRAWN BY: K. PATTERSON
 CHECKED BY: G. LAROCHE
 SHEET 8 OF 32

LAYOUT SHEET
 SCALE 1" = 20'-0"
 20 0 20