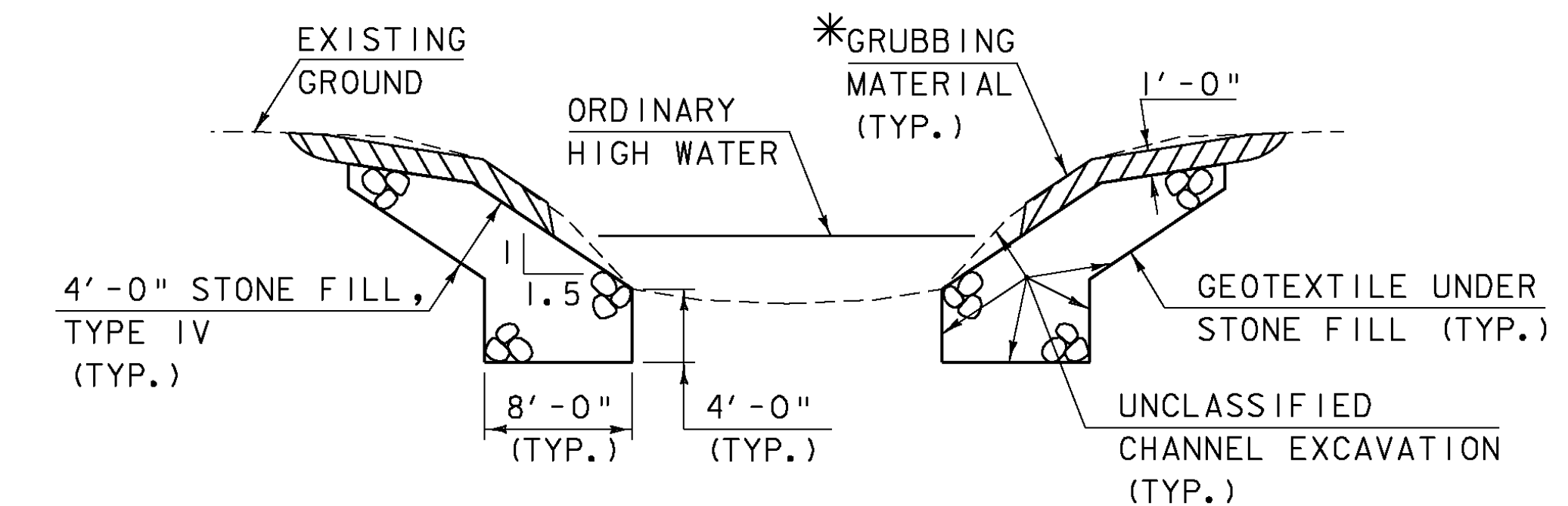


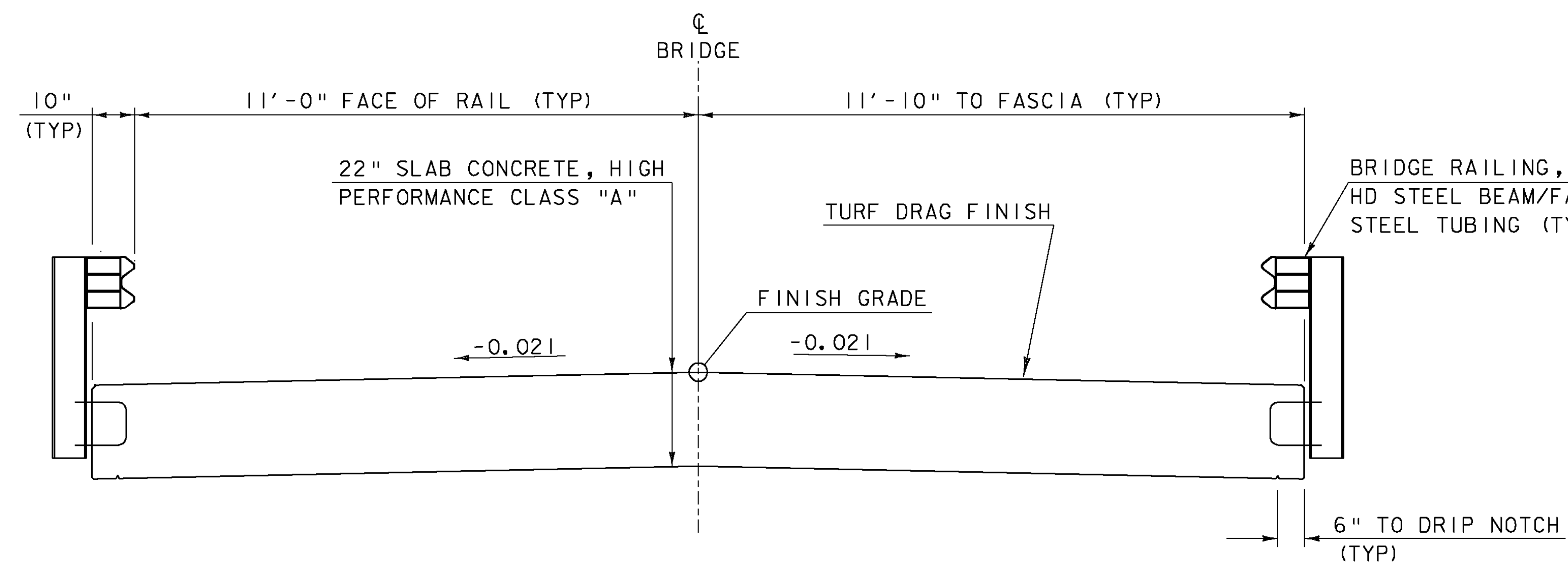
TYPICAL ROADWAY SECTION

SCALE 1/2" = 1'-0"



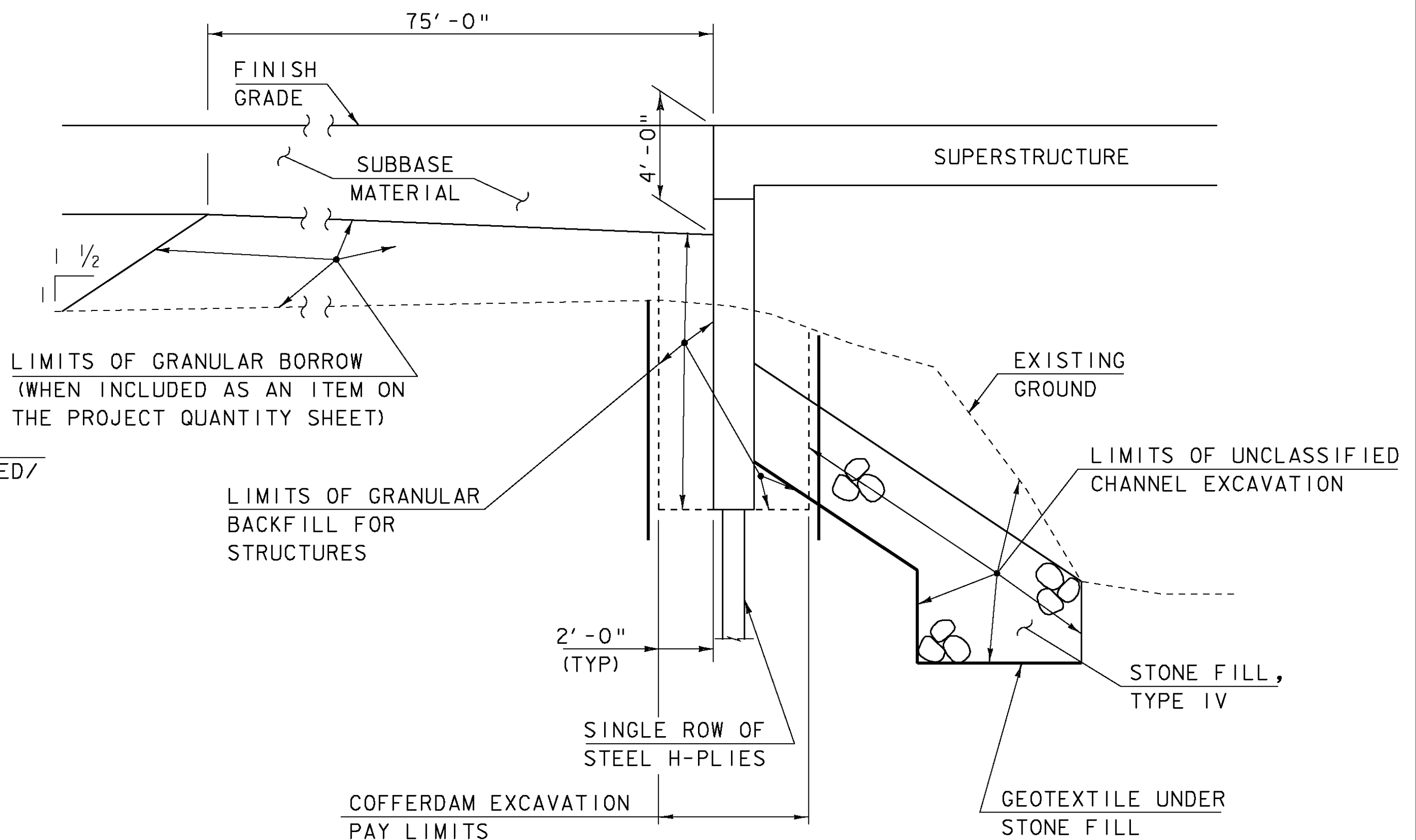
TYPICAL CHANNEL SECTION  
 NOT TO SCALE

\*GRUBBING MATERIAL SHALL NOT BE PLACED ON THE STONE FILL IN THE AREA UNDER THE BRIDGE. WHENEVER CHANNEL SLOPE INTERSECTS ROADWAY SUBBASE, GRUBBING MATERIAL SHALL BEGIN AT THE BOTTOM OF SUBBASE.



TYPICAL BRIDGE SECTION

SCALE 1/2" = 1'-0"



TYPICAL INTEGRAL ABUTMENT SECTION

NOT TO SCALE

**MATERIAL TOLERANCES**

(IF USED ON PROJECT)

SURFACE	
- PAVEMENT (TOTAL THICKNESS)	+/- 1/4"
- AGGREGATE SURFACE COURSE	+/- 1/2"
SUBBASE	+/- 1"
SAND BORROW	+/- 1"

**COFFERDAM NOTES**

1. COFFERDAM DIMENSIONS TO BE DETERMINED BY THE CONTRACTOR.
2. THE PAY LIMITS OF EITHER "COFFERDAM EXCAVATION, EARTH" OR "COFFERDAM EXCAVATION, ROCK" SHALL BE 2'-0" OUTSIDE THE PERIMETER OF THE PILE CAP AND FROM BOTTOM OF EXCAVATION UP TO THE EXISTING GROUND OR BOTTOM OF SUBBASE, WHICHEVER IS LOWER.
3. IF A COFFERDAM IS CONSTRUCTED WHICH IS LARGER THAN THE INDICATED COFFERDAM EXCAVATION PAY LIMITS, PAYMENT FOR ALL UNCLASSIFIED CHANNEL EXCAVATION, INCLUDING THAT PORTION WHICH IS INSIDE THE COFFERDAM BUT OUTSIDE THE COFFERDAM PAY LIMITS, WILL BE MADE AT THE CONTRACT UNIT PRICE FOR UNCLASSIFIED CHANNEL EXCAVATION. NO MEASUREMENT AND PAYMENT WILL BE MADE FOR COFFERDAM EXCAVATION AND GRANULAR BACKFILL FOR STRUCTURES OUTSIDE THE PAY LIMITS DEFINED IN NOTE 2.

PROJECT NAME:	MENDON	PLOT DATE:	07-SEP-2010
PROJECT NUMBER:	BRO 1443 (43)	DRAWN BY:	K. PATTERSON
FILE NAME:	s01j272+yp.dgn	DESIGNED BY:	J. SALVATORI
PROJECT LEADER:	K. HIGGINS	CHECKED BY:	J. SALVATORI
TYPICAL SECTIONS		SHEET	6 OF 32