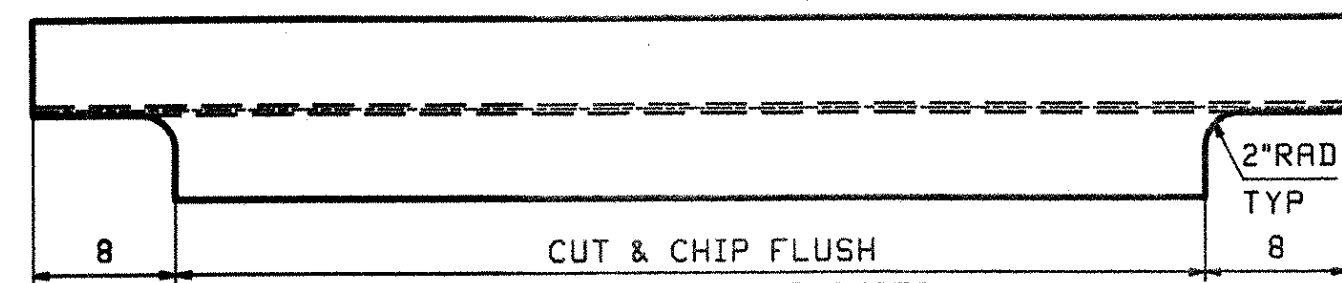
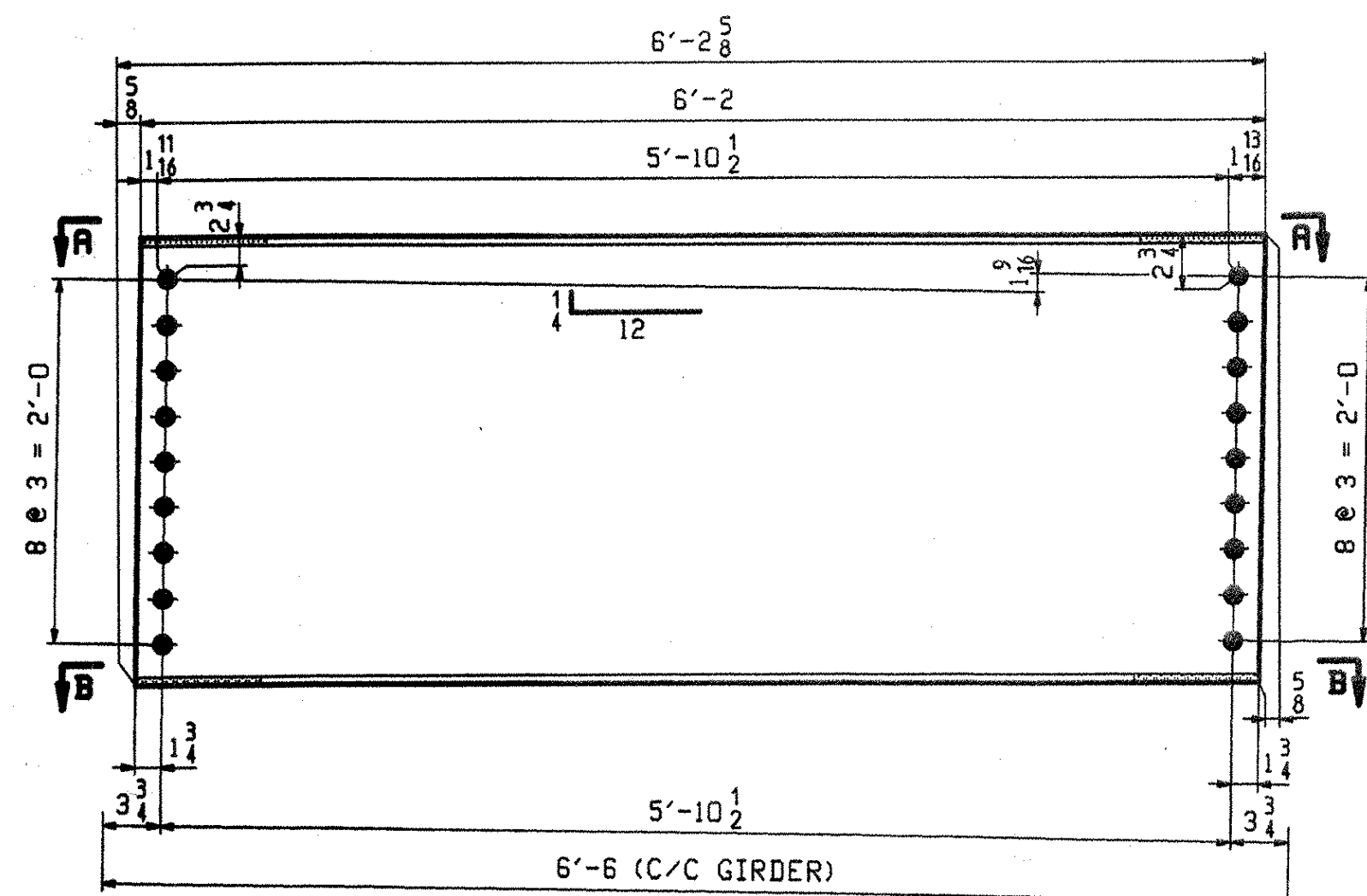


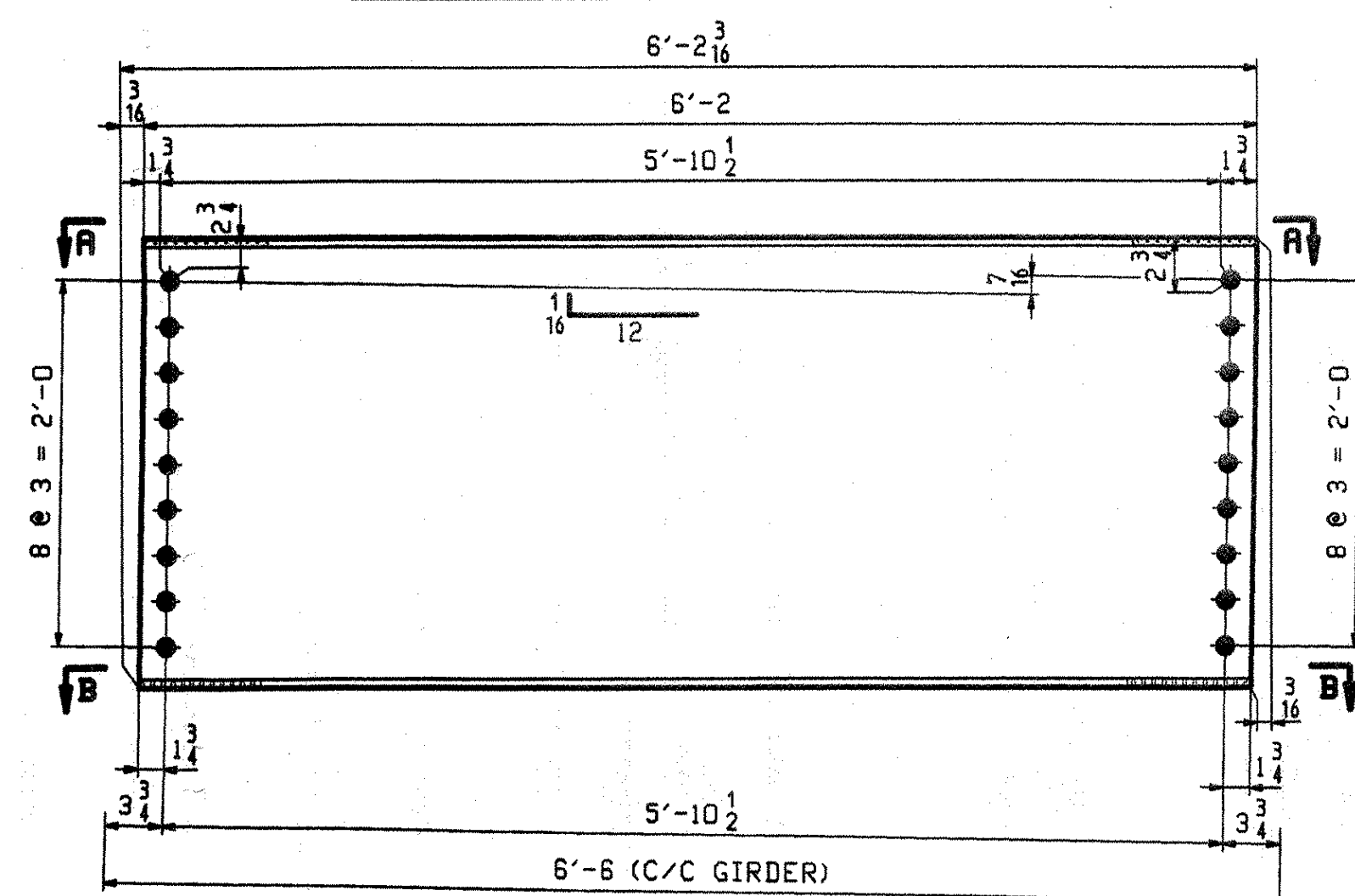
VIEW "A-A" AT 6D1 & 6DIP
SECT "B-B" & 6D3P ONLY



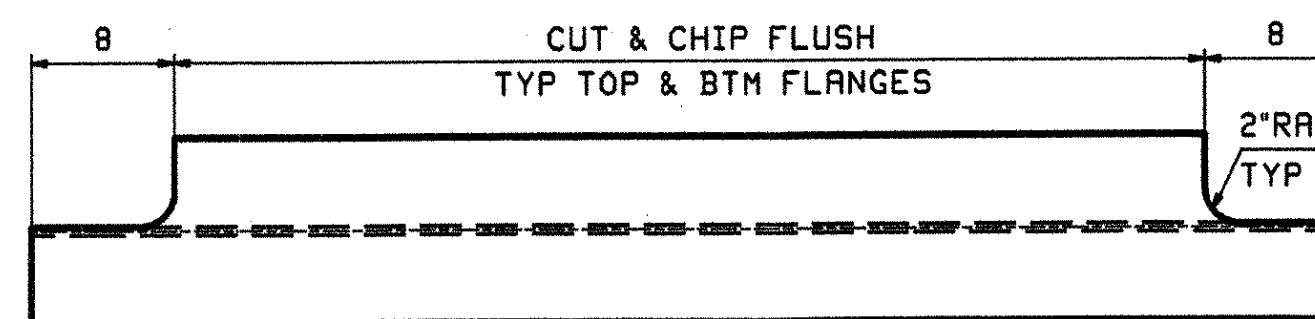
VIEW "A-A" AT 6D2 & 6D2P
SECT "B-B" & 6D4 ONLY



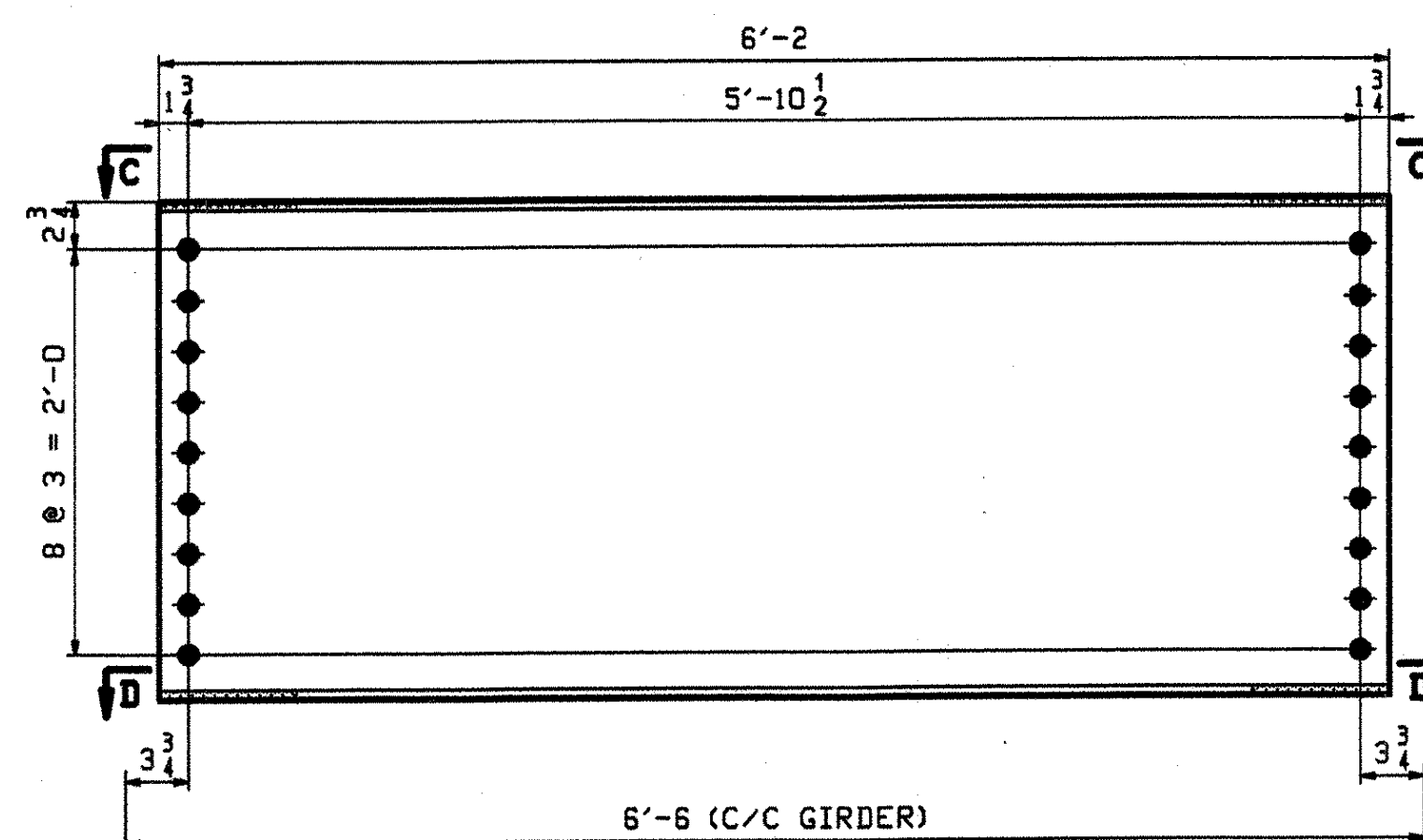
- 1 ~ BRG DIAPHRAGM - 6D1
- 2 ~ BRG DIAPHRAGMS - 6DIP (PAINTED)
- 2 ~ BRG DIAPHRAGMS - 6D2
- 1 ~ BRG DIAPHRAGM - 6D2P (PAINTED)



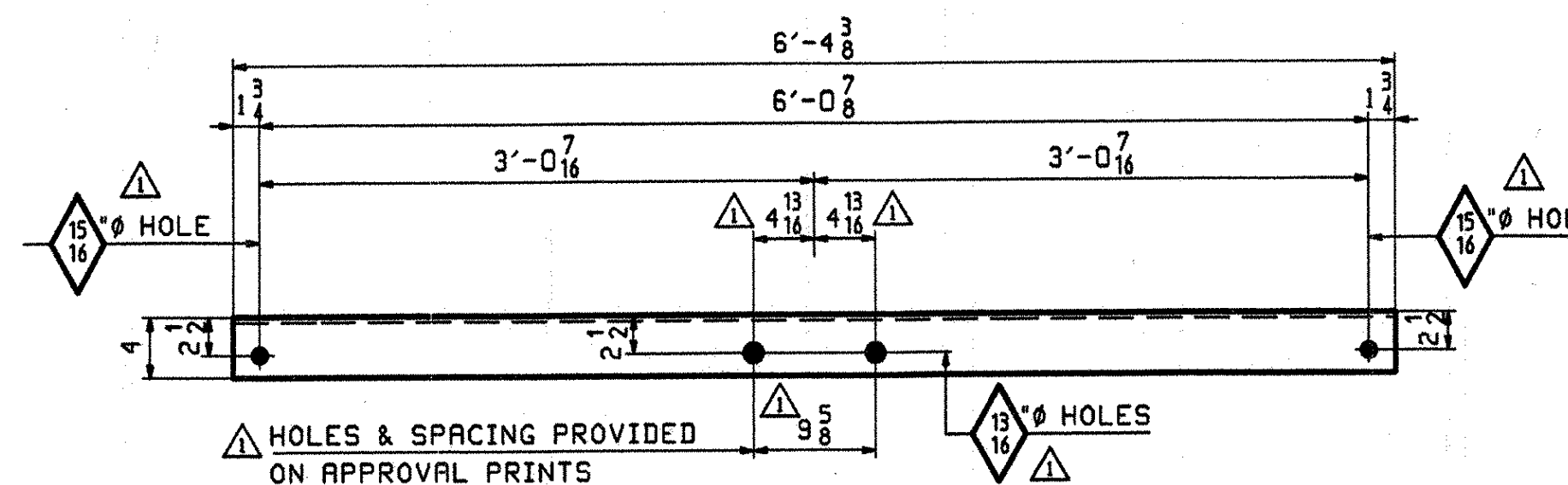
- 1 ~ BRG DIAPHRAGM - 6D3
- 1 ~ BRG DIAPHRAGM - 6D4P (PAINTED)



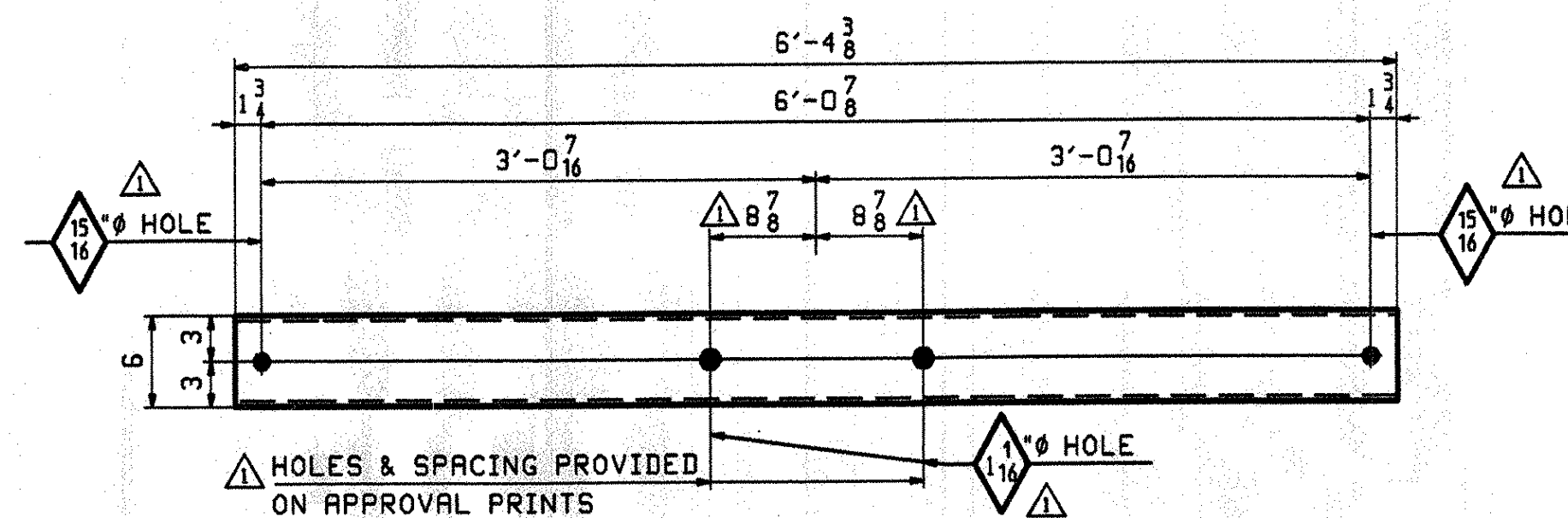
VIEW "C-C"
SECT "D-D"



16 ~ INT. DIAPHRAGMS - 6D5



11 ~ UTILITY SUPPORTS - 6D6
(GALV AFTER FABRICATION)



11 ~ UTILITY SUPPORTS - 6D7
(GALV AFTER FABRICATION)

| JOB NO. | | DRAWING NO. | | REV. |
|----------|------|------------------|-----|--------------------------------------|
| 328 | | 6 | | △ |
| ABN INFO | SHIP | BILL OF MATERIAL | | |
| PAGE | LINE | MARK | QTY | REMARKS |
| | | | | DIAPHRAGMS |
| 2 | J | 6D1 | 1 | H 30x90 6 2 5/8 560 |
| 2 | J | 6DIP | 2 | W 30x90 6 2 5/8 PAINTED 560 |
| 2 | J | 6D2 | 2 | W 30x90 6 2 5/8 560 |
| 2 | J | 6D2P | 1 | H 30x90 6 2 5/8 PAINTED 560 |
| 2 | J | 6D3 | 1 | W 30x90 6 2 3/4 558 |
| 2 | J | 6D4P | 1 | W 30x90 6 2 3/4 PAINTED 558 |
| 2 | J | 6D5 | 16 | W 30x90 6 2 558 |
| | | | | UTILITY SUPPORTS |
| 2 | K | 6D6 | 11 | L 4x4x 3/8 6 4 3/8 (A709-36) GALV 66 |
| 2 | L | 6D7 | 11 | C 6x13 6 4 3/8 (A709-36) GALV 83 |

560
1120
1120
560
558
558
8880

682
913

14951

RECEIVED
JUL 24 2007
DATE 7/11/07

| OUT FOR APPROVAL | 6/4/07 | | | | | | | | | | |
|--|-------------|-------------|-------------|-----|-----|------|-----|------|-----|------------|-------------|
| OUT FOR APPROVAL | 7-20-07 | | | | | | | | | | |
| ISSUED TO SHOP | | | | | | | | | | | |
| FIELD & OFFICE | | | | | | | | | | | |
| APPROVAL COMMENTS | 7/5 2007 | JTB | ELC | | | | | | | | |
| REV. | REMARKS | DATE | DWN | CHK | APP | Q.A. | NO. | DIR. | LGT | TYPE | WASHER |
| MATERIAL: | ELECTRODES: | HOLES: | SHOP BOLTS: | | | | | | | | |
| A709-50W (UN) | | 15/16" (UN) | NONE | | | | | | | | |
| SURFACE PREP. & PAINT: | | | | | | | | | | | |
| SEE DRAWING GNI | | | | | | | | | | | |
| DESCRIPTION: DIAPHRAGMS & UTILITY SUPPORTS | | | | | | | | | | DRAWN BY | DATE |
| JOB: TOWN HIGHWAY #3 OVER WILLOUGHBY RIVER | | | | | | | | | | JTB | 06/07 |
| BRIDGE NO. 61 | | | | | | | | | | CHKD BY | |
| TOWN OF BARTON, VILLAGE OF ORLEANS | | | | | | | | | | ELC | 06/07 |
| COUNTY OF ORLEANS, VERMONT | | | | | | | | | | APPROV BY | |
| CONTRACTOR: JA McDONALD | | | | | | | | | | SUPERVISOR | W. J. GATTI |
| PROJ NO. BRO 1448(29) | | | | | | | | | | Q.A. | |
| CUSTOMER: VERMONT ROT | | | | | | | | | | | |
| CASCO BAY STEEL STRUCTURES, INC. | | | | | | | | | | JOB NO. | DRG. NO. |
| 75 SPRING HILL ROAD SACO, MAINE 04072 | | | | | | | | | | 328 | 6 |
| PHONE (207) 282-7360 FAX. (207) 282-1179 | | | | | | | | | | | REV. △ |

09955