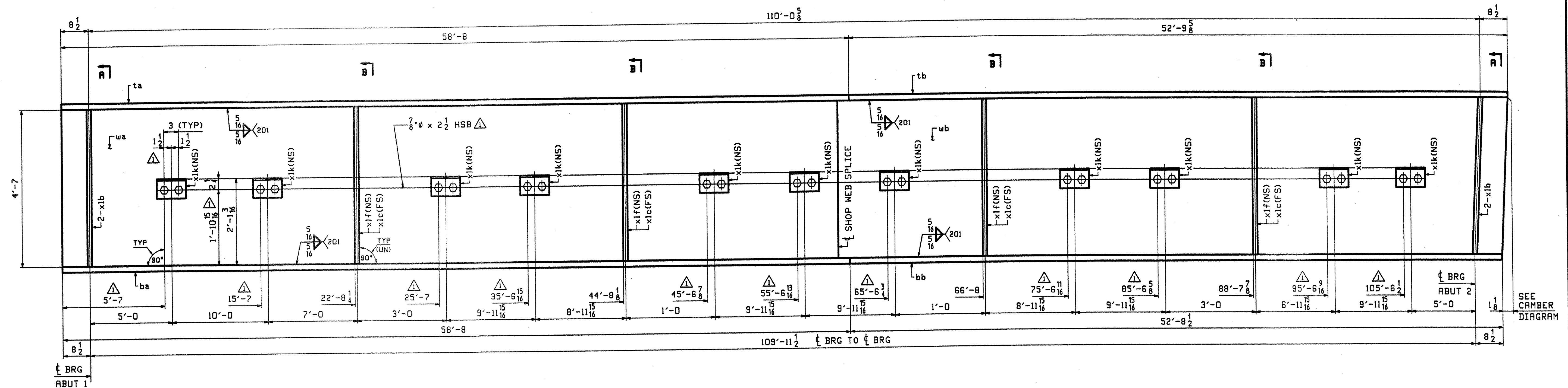


BILL OF MATERIAL							BILL OF MATERIAL													
ABH INFO	SHIP	MARK	QTY	MATERIAL	LENGTH	REMARKS	JOB NO.	DRAWING NO.	REV.	ABH INFO	SHIP	MARK	QTY	MATERIAL	LENGTH	REMARKS	JOB NO.	DRAWING NO.	REV.	
					FT INCHES			4							FT INCHES		328	4		
2	B		4	x1b	PL 1/2 x 7	4 7	(A209-S0W) MIE				4G4	1		GIRDER						
2	C		4	x1c	PL 1/2 x 7	4 7	(A209-S0W)													
2	C		4	x1f	PL 1/2 x 7	4 7	(A209-S0W)													
2	E		11	x1k	L 4 x 4 x 3/8	0 6	(A209-S0W)							1	wa	PL 5/8 x 55	58 3 11/16	(M270-S0WT2) (H2-3)		
4	B		22		7/8 HSB	0 2 1/2	(A325-3)							1	ta	PL 7/8 x 16	58 8	(M270-S0WT2) (H2-3)		
4	D		22		7/8 HSW		(F435W)							1	tb	PL 7/8 x 16	58 8	(M270-S0WT2) (H2-3)		
														1	ba	PL 1/4 x 16	58 8	(M270-S0WT2) (H2-3)		
														1	cb	PL 1/4 x 16	58 8 1/2	(M270-S0WT2) (H2-3)		

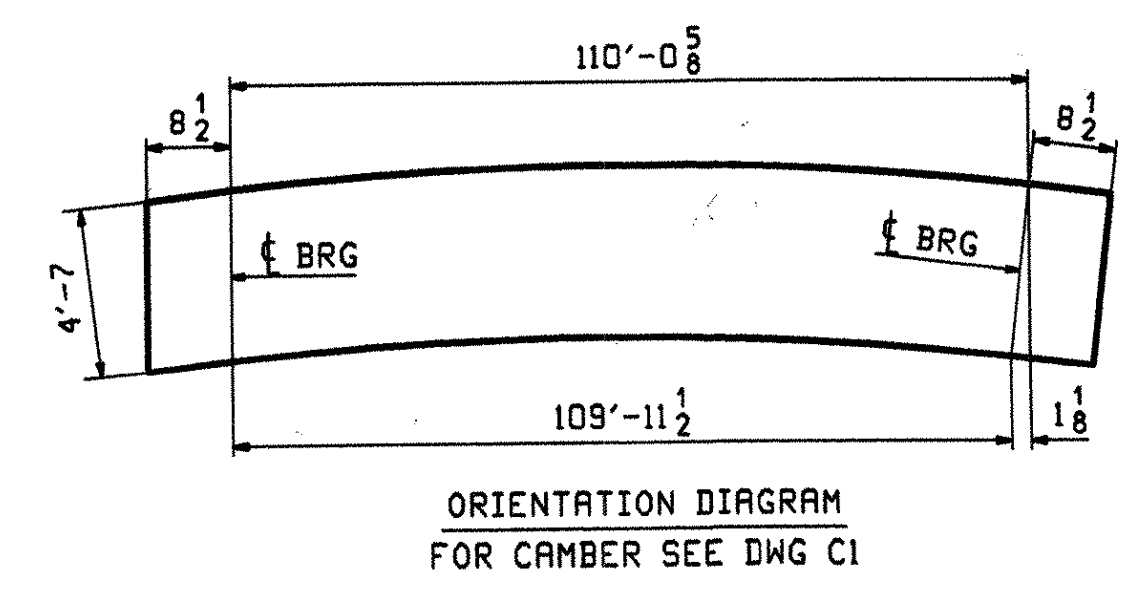
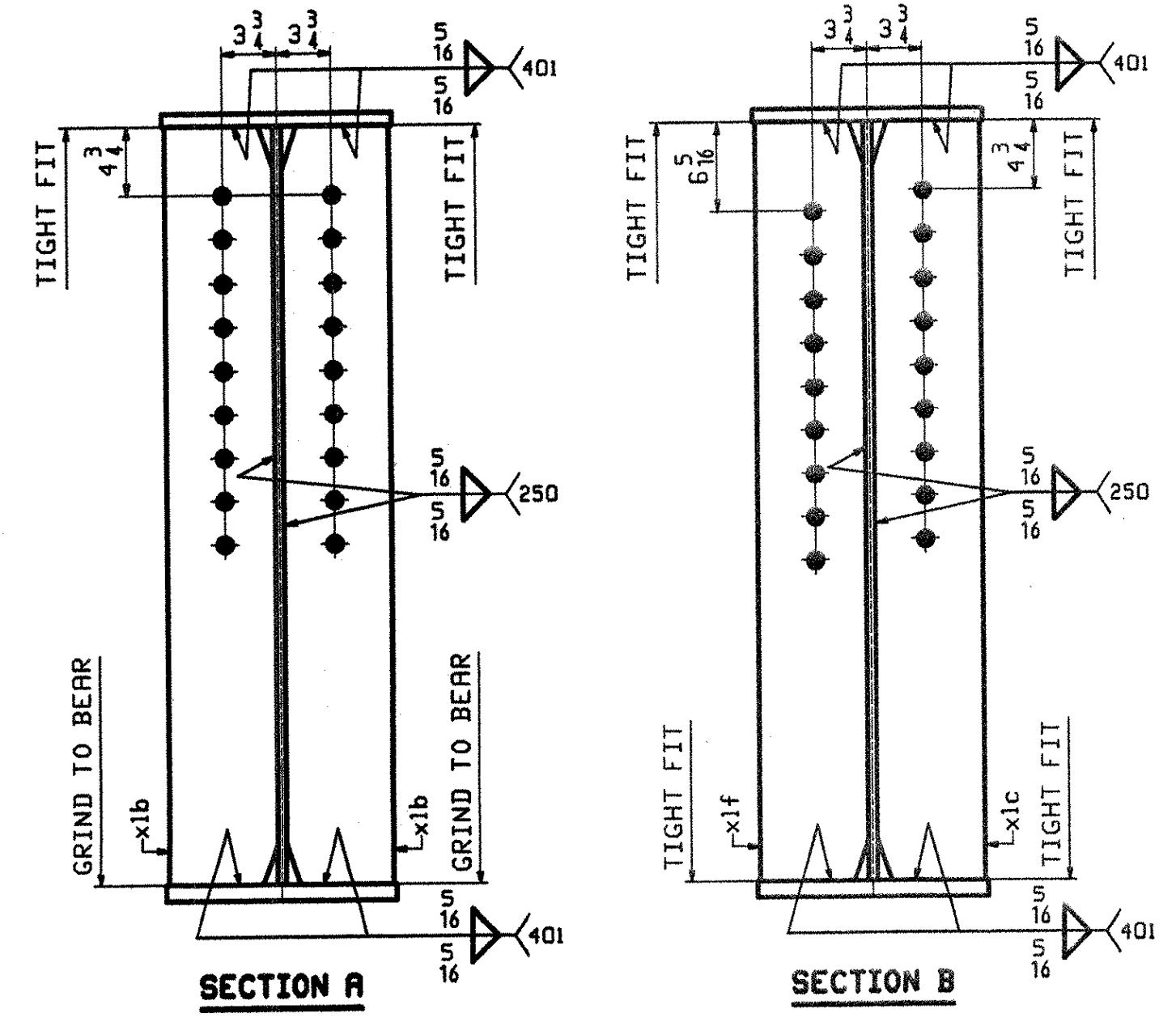
6588  
6450  
2741  
2874  
3976  
3574

26776



**ONE - GIRDER - 4G4**

FOR GIRDER STANDARDS SEE DRAWING X1.  
FOR CAMBER & FLANGE DIAGRAMS SEE DRAWING C1.  
FOR GENERAL NOTES SEE DRAWING GNI.  
H2-3 DENOTES MATERIAL SUBJECT TO CHARPY V-NOTCH TESTING.



RECEIVED  
OK'D BY: JEL OK'D BY: JEL  
JUL 24 2007  
REVISION: APPROVED  
BY: WJ DATE: 7/11/07

OUT FOR APPROVAL	6/14/07																							
OUT FOR APPROVAL	7-20-07																							
ISSUED TO SHOP																								
FIELD & OFFICE																								
APPROVAL COMMENTS	7/5 2007	JTB	ELC																					
REV. REMARKS	DATE	DNW	CHK	APP	Q.A.	NO.	DIA.	LGT	TYPE	WASHER														
MATERIAL:	A709-S0W (UN)	ELECTRODES:		HOLES:	5/16 Ø (UN)	SHOP BOLTS:				NONE														
SURFACE PREP. & PAINT:																								
SEE DRAWING GNI																								
DESCRIPTION:	GIRDER - 4G4										DRAWN BY:	JTB	DATE:	06/07										
JOB:	TOWN HIGHWAY #3 OVER WILLOUGHBY RIVER BRIDGE NO. 61 TOWN OF BARTON, VILLAGE OF ORLEANS COUNTY OF ORLEANS, VERMONT CONTRACTOR: JA McDONALD										CHKD BY:	ELC	DATE:	06/07										
PROJ NO.	BRO 1449(29)										APPROV BY:	W. J. GATTI	SUPERVISOR:	W. J. GATTI										
CUSTOMER:	VERMONT ROT										Q.A.													
CASCO BAY STEEL STRUCTURES, INC.															JOB NO.:	328	DRG. NO.:	4						
75 SPRING HILL ROAD SACO, MAINE 04072															REV.:									
PHONE (207) 282-7360 FAX. (207) 282-1179																								