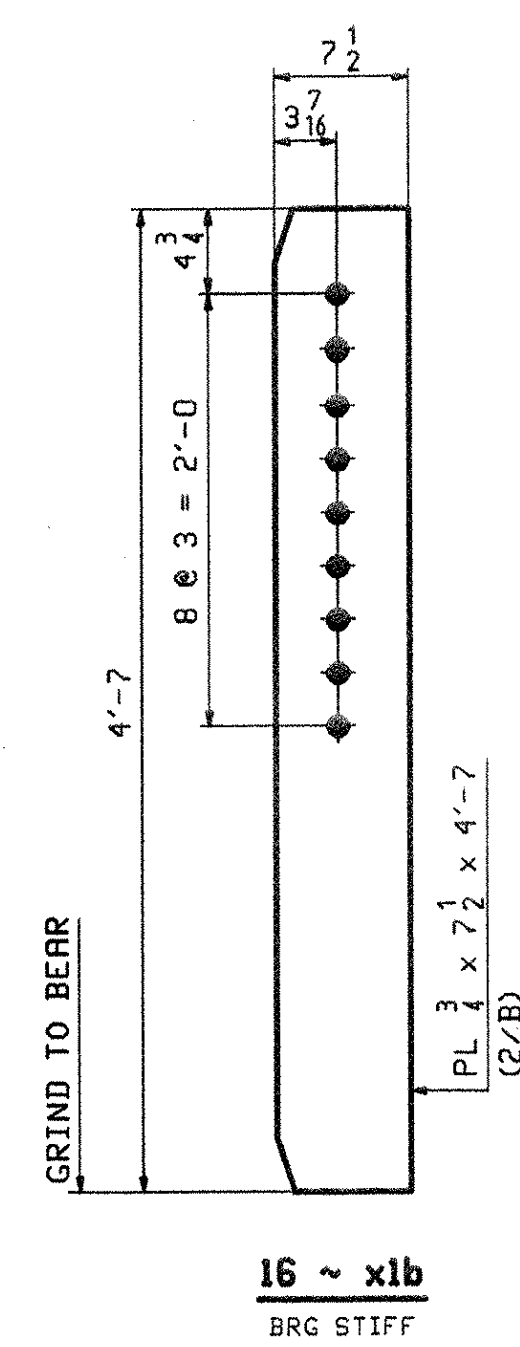
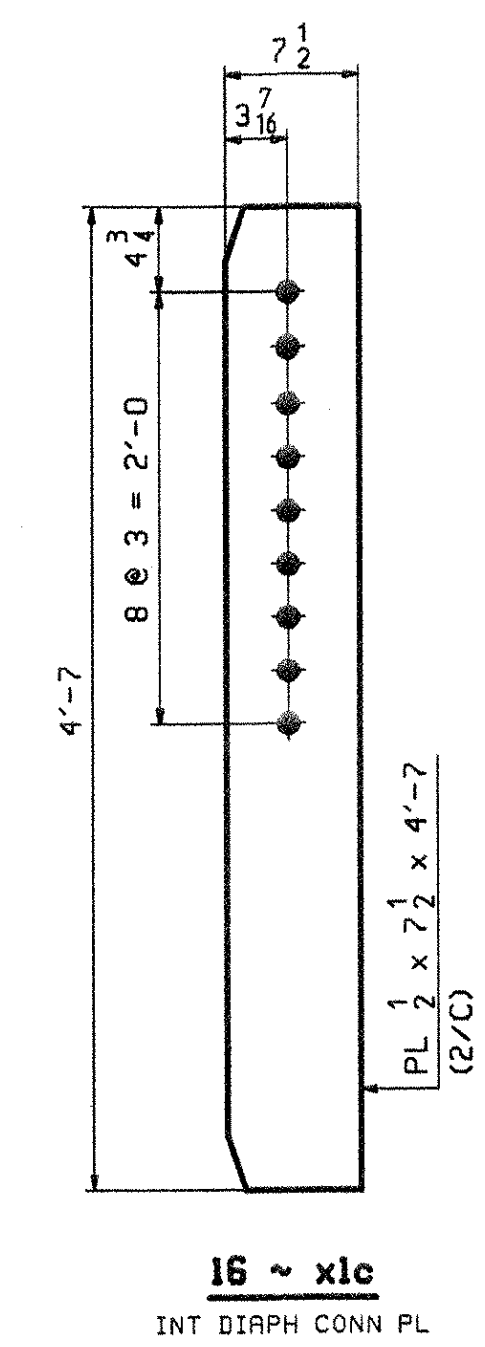


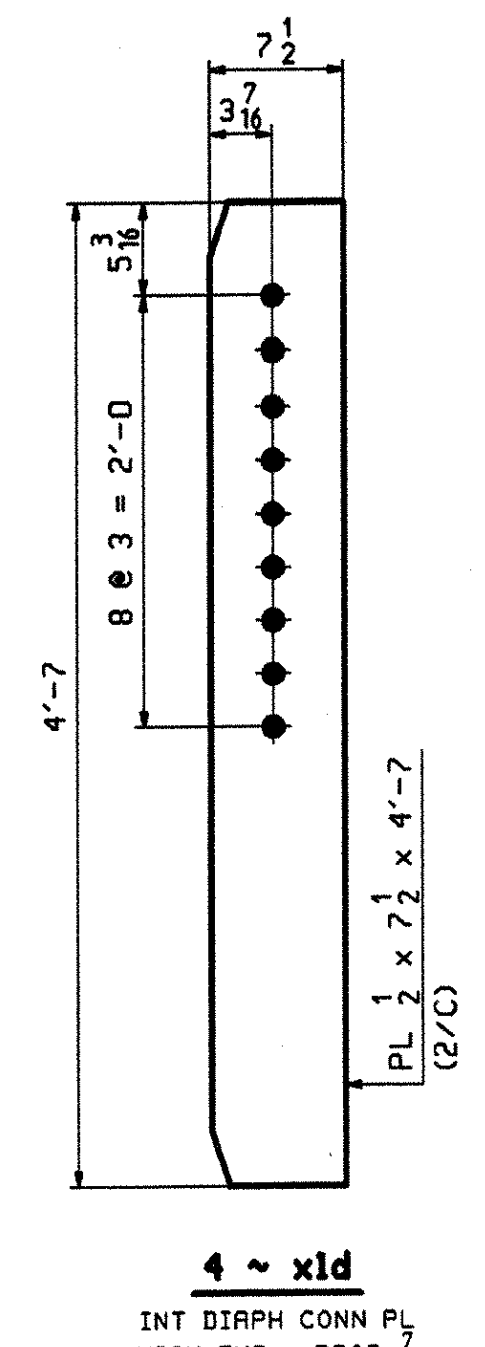
4 ~ xla
BRG STIFF



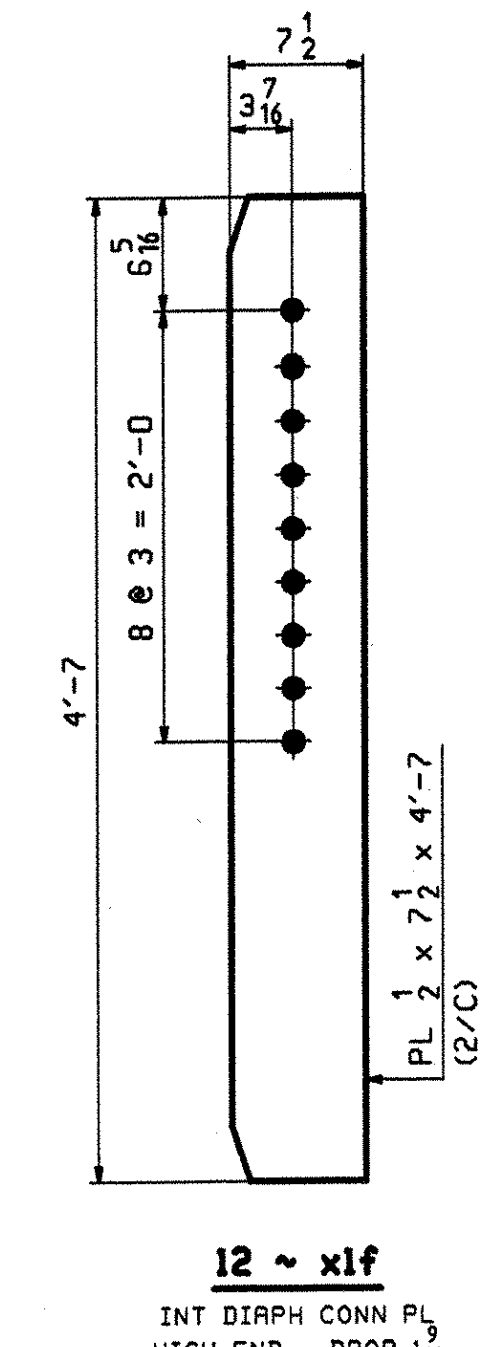
16 ~ xlb
BRG STIFF



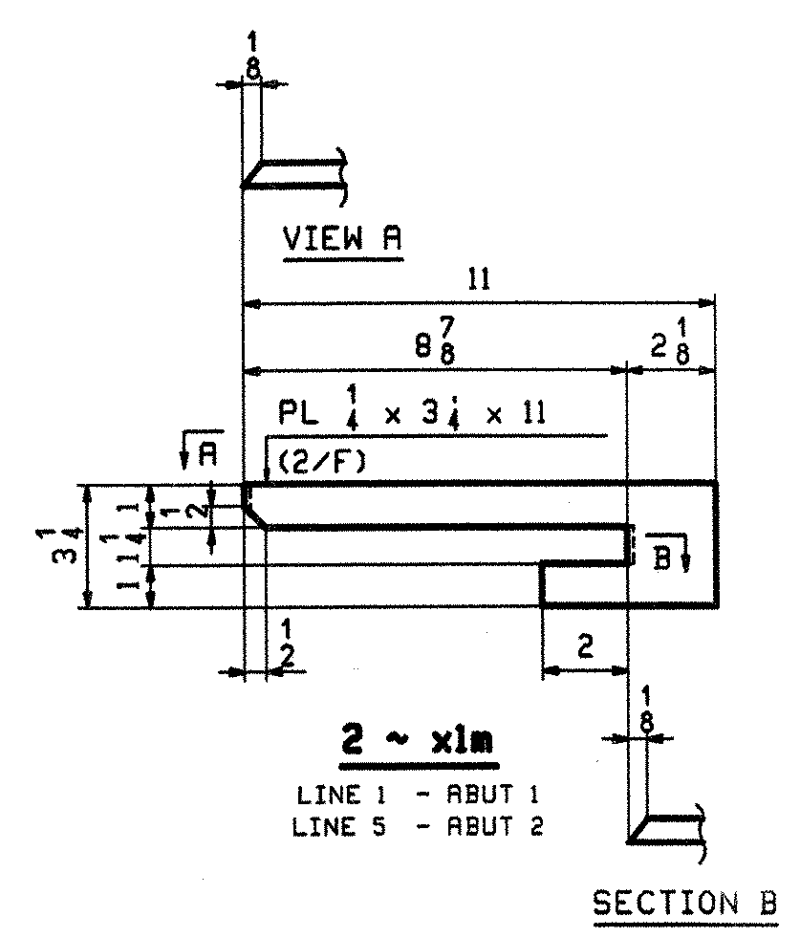
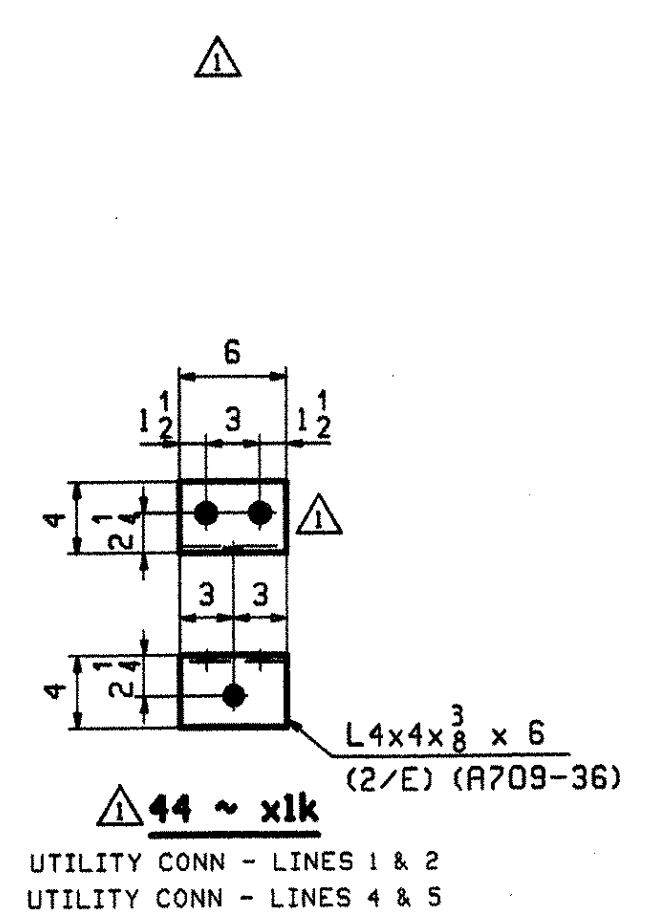
16 ~ xlc
INT DIAPH CONN PL
LOW END



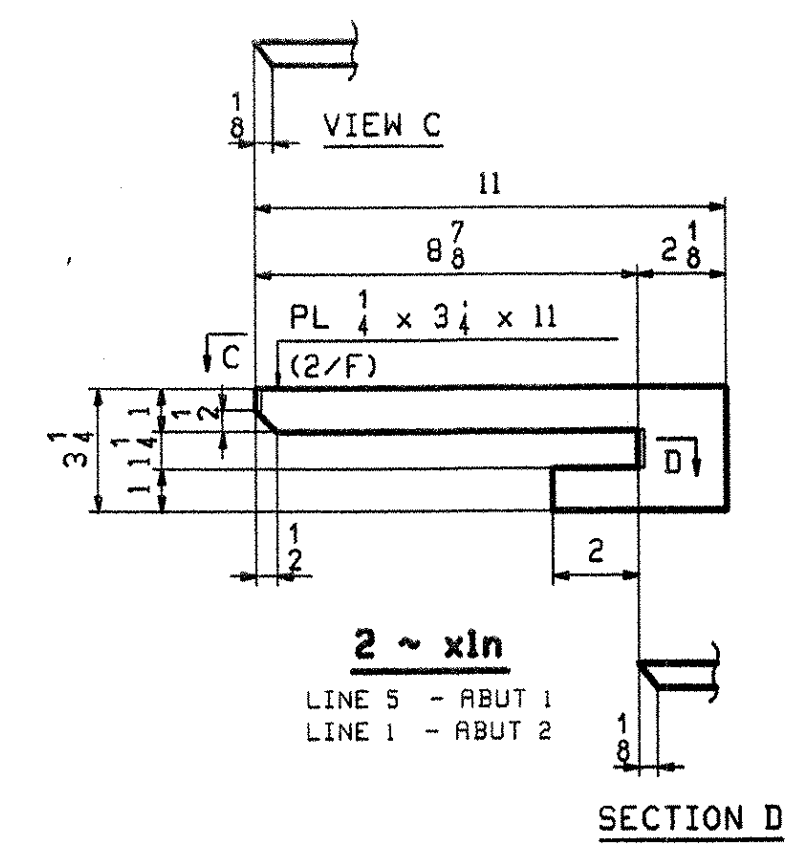
4 ~ xld
INT DIAPH CONN PL
HIGH END - DROP 1/16



12 ~ xlf
INT DIAPH CONN PL
HIGH END - DROP 1/16



2 ~ xln
LINE 1 - ABUT 1
LINE 5 - ABUT 2



2 ~ xln
LINE 5 - ABUT 1
LINE 1 - ABUT 2

RECEIVED
 CR'D BY: JEL OK'D BY: _____
 JUL 24 2007
 RESUBMIT _____ APPROVED: _____
 BY: WY/CF DATE: 7/17/07

OUT FOR APPROVAL	6/14/07																		
OUT FOR APPROVAL	7-20-07																		
ISSUED TO SHOP																			
FIELD & OFFICE																			
APPROVAL COMMENTS	7/5 2007	JTB	ELC																
REV.	REMARKS	DATE	DWN	CHK	APP	Q.A.	NO.	DIA.	LGT	TYPE	WASHER								
MATERIAL:	A709-50W (UN)	ELECTRODES:		HOLES:	15/16" Δ	SHOP BOLTS:	NONE												
SURFACE PREP. & PAINT: SEE DRAWING GNI																			
DESCRIPTION: GIRDER STANDARDS												DRAWN BY		DATE					
JOB: TOWN HIGHWAY #3 OVER WILLOUGHBY RIVER												JTB		06/07					
BRIDGE NO. 61												CHKD BY							
TOWN OF BARTON, VILLAGE OF ORLEANS												ELC		06/07					
COUNTY OF ORLEANS, VERMONT												APPROV BY							
CONTRACTOR: JR McDONALD												SUPERVISOR		W. J. GATTI					
PROJ NO. BRO 1449(29)												Q.A.							
CUSTOMER: VERMONT ROT																			
CASCO BAY STEEL STRUCTURES, INC.												JOB NO.		DRG. NO.					
75 SPRING HILL ROAD												328		X1					
PHONE (207) 282-7360												SACO, MAINE 04072		REV. Δ					
												FAX. (207) 282-1179							

094 SS