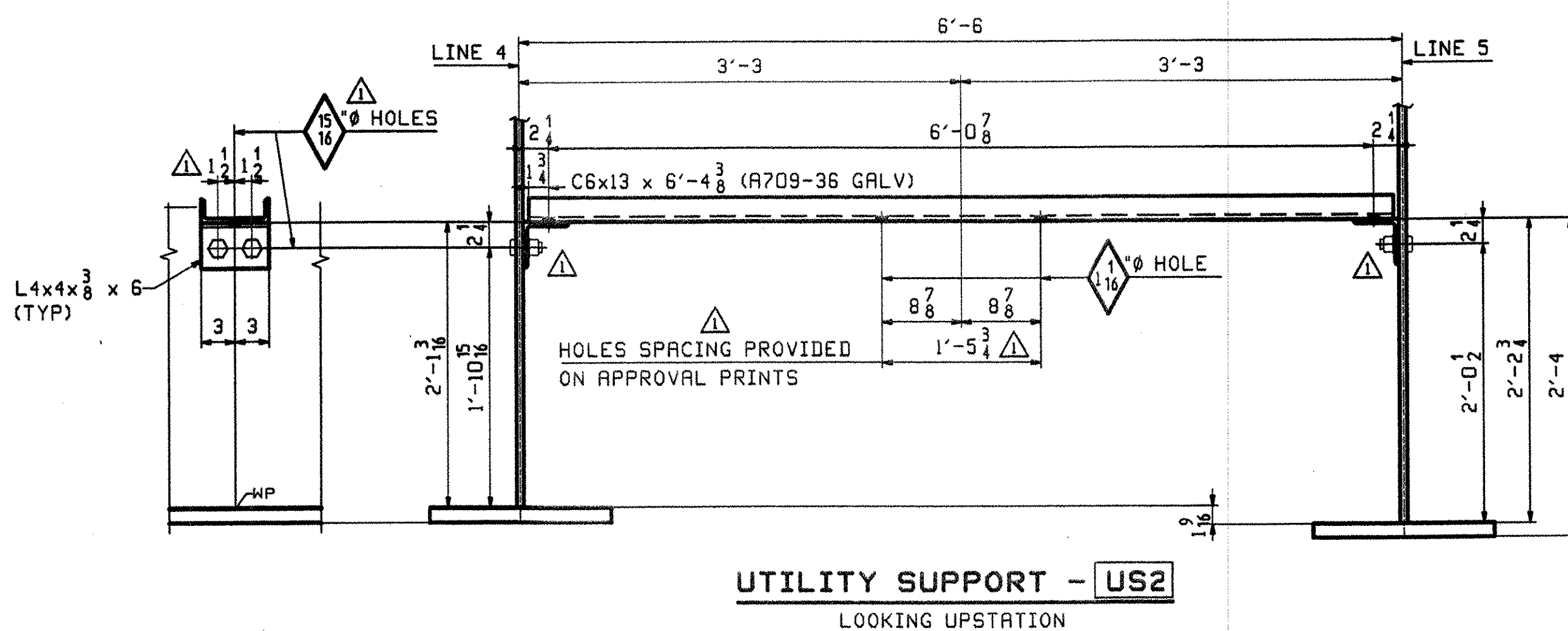
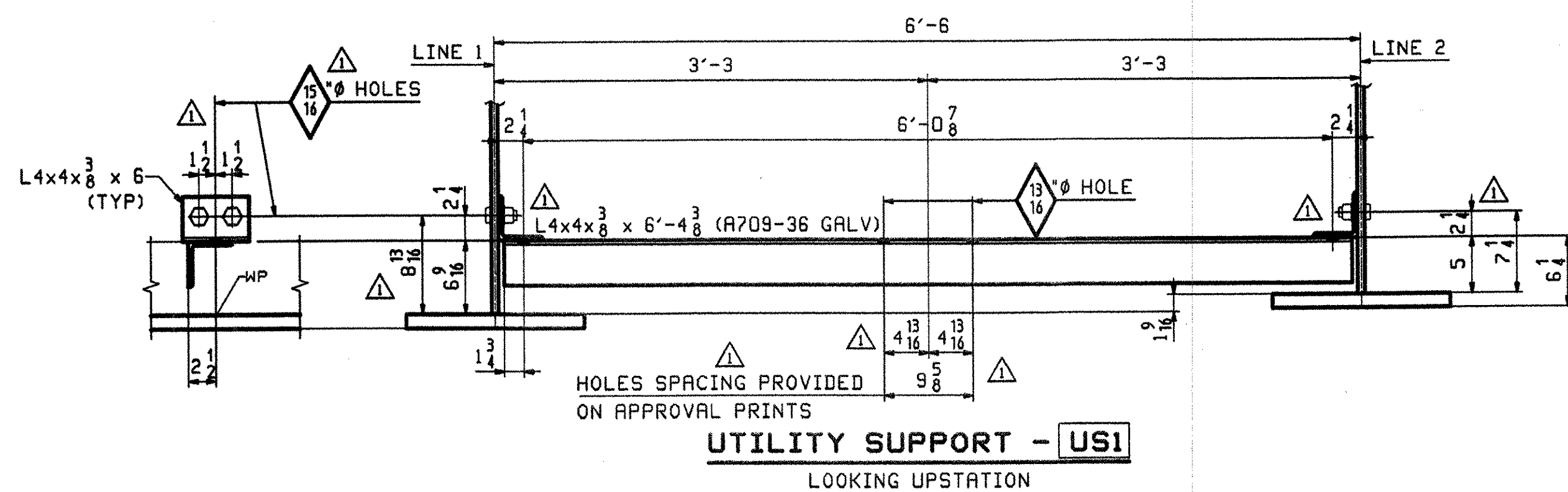
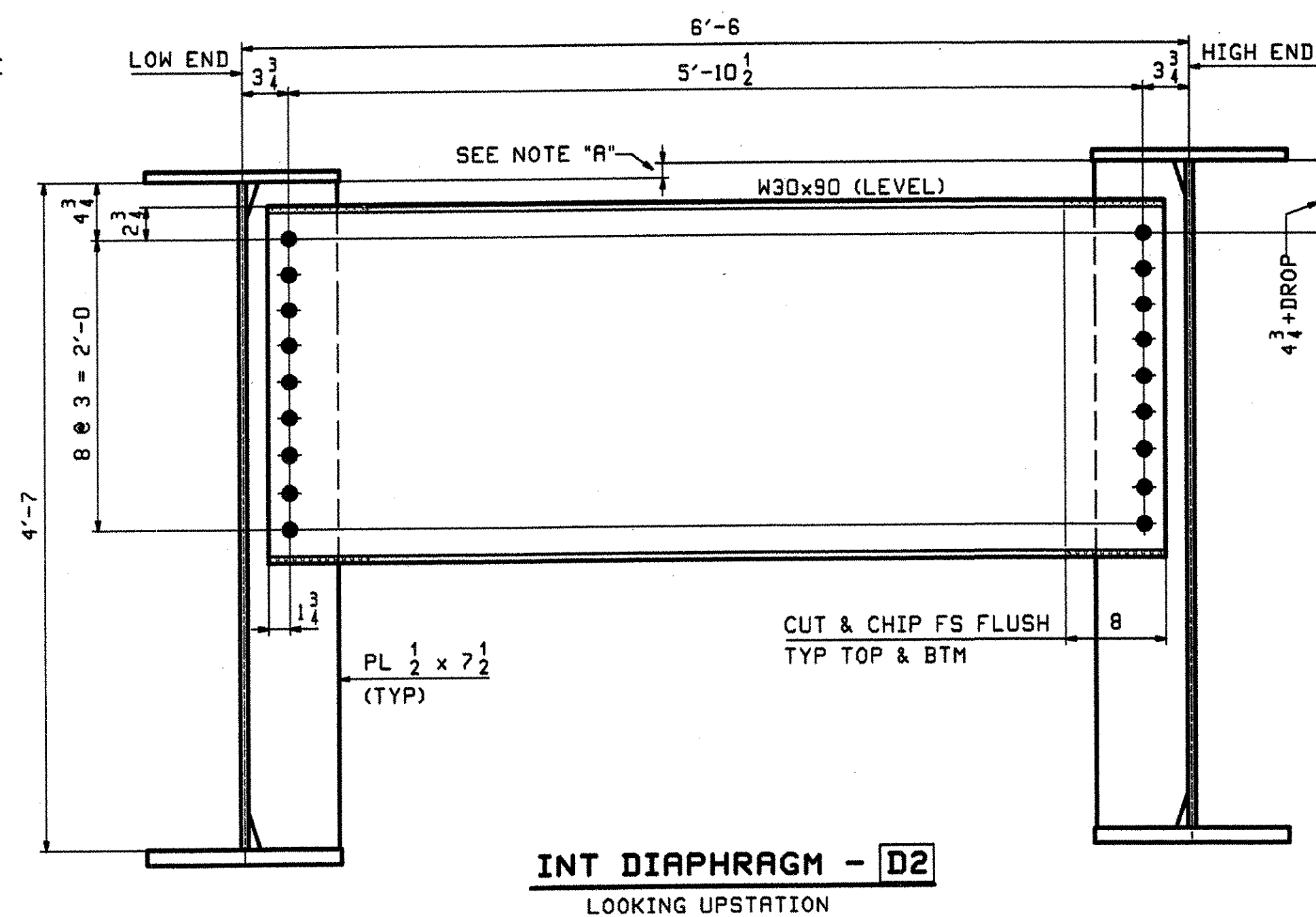


NOTE "A"
 DROP VARIES IN MAGNITUDE
 & DIRECTION (SEE DWG WS1)



- NOTES:
1. MATERIAL SHALL BE AASHTO M270M/M270, GRADE 50W (UN).
 2. ALL BOLTS SHALL BE 7/8" AASHTO M164 TYPE 3 HSB IN 15/16" HOLES (UN).
 3. ALL BOLTS AT ABUTMENT 1 DIAPHRAGMS & UTILITY SUPPORTS SHALL BE AASHTO M164 TYPE 1 (GALV).

RECEIVED
 JUL 24 2007
 APPROVED
 DATE 7/26/07

OUT FOR APPROVAL	6/21/07																			
OUT FOR APPROVAL	7/20/07																			
ISSUED TO SHOP																				
FIELD & OFFICE																				
APPROVAL COMMENTS	7/25/2007	JTB	ELC																	
REV.	REMARKS	DATE	DWN	CHK	APP	O.A.	NO.	DIA.	LGT	TYPE	WASHER									
MATERIAL:	A709-50W (UN)	ELECTRODES:		HOLES:	15/16" (UN)	SHOP BOLTS:	NONE													
SURFACE PREP. & PRINT: SEE DRAWING GNI																				
DESCRIPTION:	LAYOUTS	DRAWN BY	DATE																	
JOB:	TOWN HIGHWAY #3 OVER WILLOUGHBY RIVER BRIDGE NO. 61	JTB	06/06																	
	TOWN OF BARTON, VILLAGE OF ORLEANS COUNTY OF ORLEANS, VERMONT	ELC	06/07																	
	CONTRACTOR: JA McDONALD	APPROV BY																		
PROJ NO.	BRO 1449(28)	SUPERVISOR	W. J. GATTI																	
CUSTOMER:	VERMONT ROT	O.A.																		
	CASCO BAY STEEL STRUCTURES, INC.	JOB NO.	328	DRG. NO.	T D 1															
	75 SPRING HILL ROAD	SACO, MAINE 04072																		
	PHONE (207) 282-7360	FAX. (207) 282-1179																		