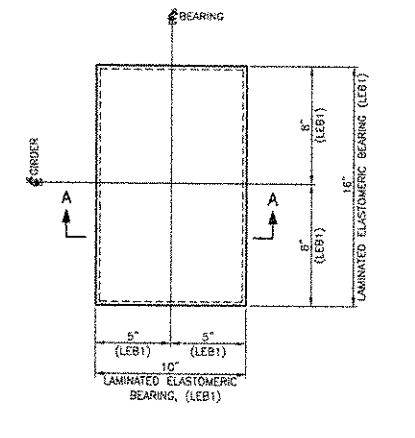
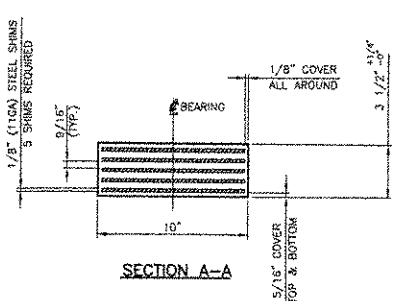
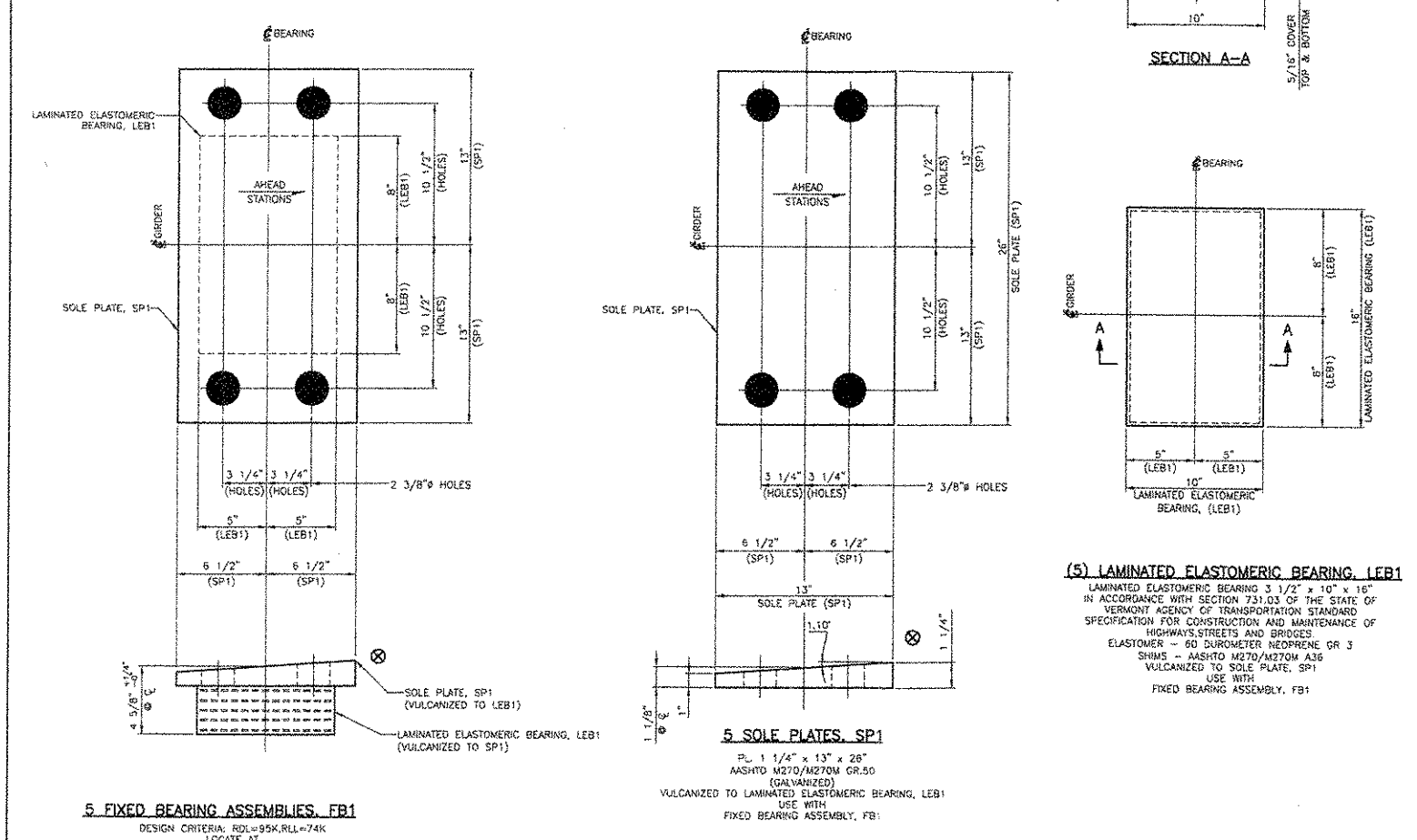


RECEIVED
 JUL 05 2007
 APPROVED FOR
 DATE 7/4/07



(3) LAMINATED ELASTOMERIC BEARING, LEI1
 LAMINATED ELASTOMERIC BEARING, LEI1
 1/2\"/>

- SHOP NOTES:
1. GOLF PLACES SHALL BE ASHED WITH/OUTON GLESS (CONCRETE)
 2. ELASTOMER-60 DIMENSION MEASURE RUBBER G.A. A
 3. BRIMS-AMOUNT WITH/OUTON DR 20
 4. ALL DIMENSIONS ARE IN INCHES
 5. DESIGN CRITERIA: $SEI = 22.5$
 6. MAX CUSTOMER SHEAR MODULUS BETWEEN -1000 & 0.200
 7. Δ SHOP TO MARK HORIZON OF PLATE AND WEAR SURFACE AS NOTED
 8. ALL REQUIRED FABRICATION OF BEARINGS SHALL OCCUR BEFORE VULCANIZATION PROCESS.

FIXED BEARING ASSEMBLY TYPE: F31		
STATE	COUNTY	PROJECT NAME
Vermont	Colchester	BARTON
PROJECT NO. 020-145(05)		
DYNAMIC RUBBER		
DATE	SCALE	DESIGNED BY
NOV 2006	AS SHOWN	DRP
DATE	SCALE	CHECKED BY
JAN 2007	AS SHOWN	DRP
DATE	SCALE	APPROVED BY
JAN 2007	AS SHOWN	DRP

NO.	REV.	DATE	BY	CHKD.	DESCRIPTION
1	0	07/04/07	DRP	DRP	DRP NO. 0470
2	1	07/04/07	DRP	DRP	DRP NO. 0470

087 bt