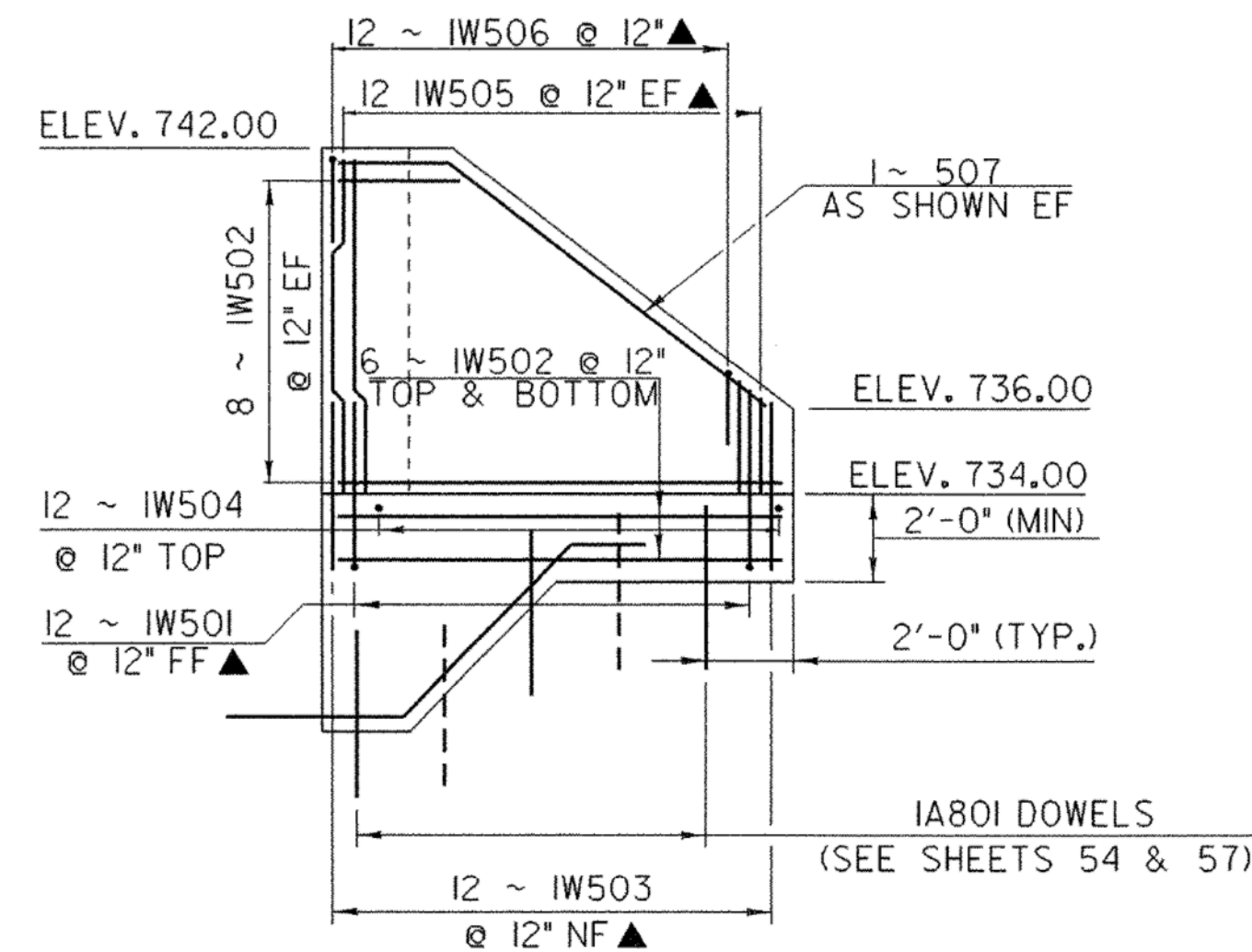


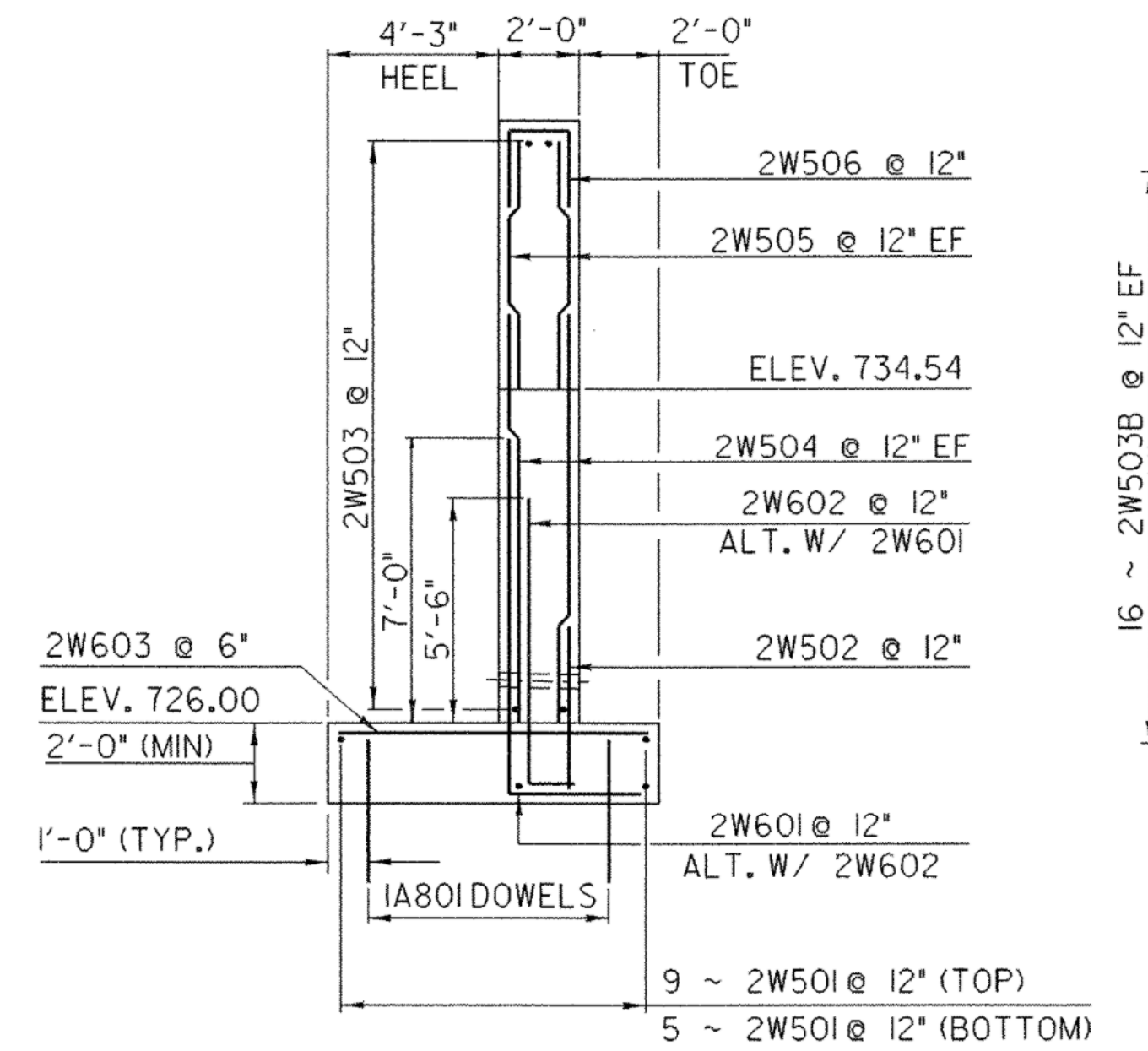
**WINGWALL #1 SECTION**

SCALE 1/4" = 1'-0"  
1 0 2 4 6



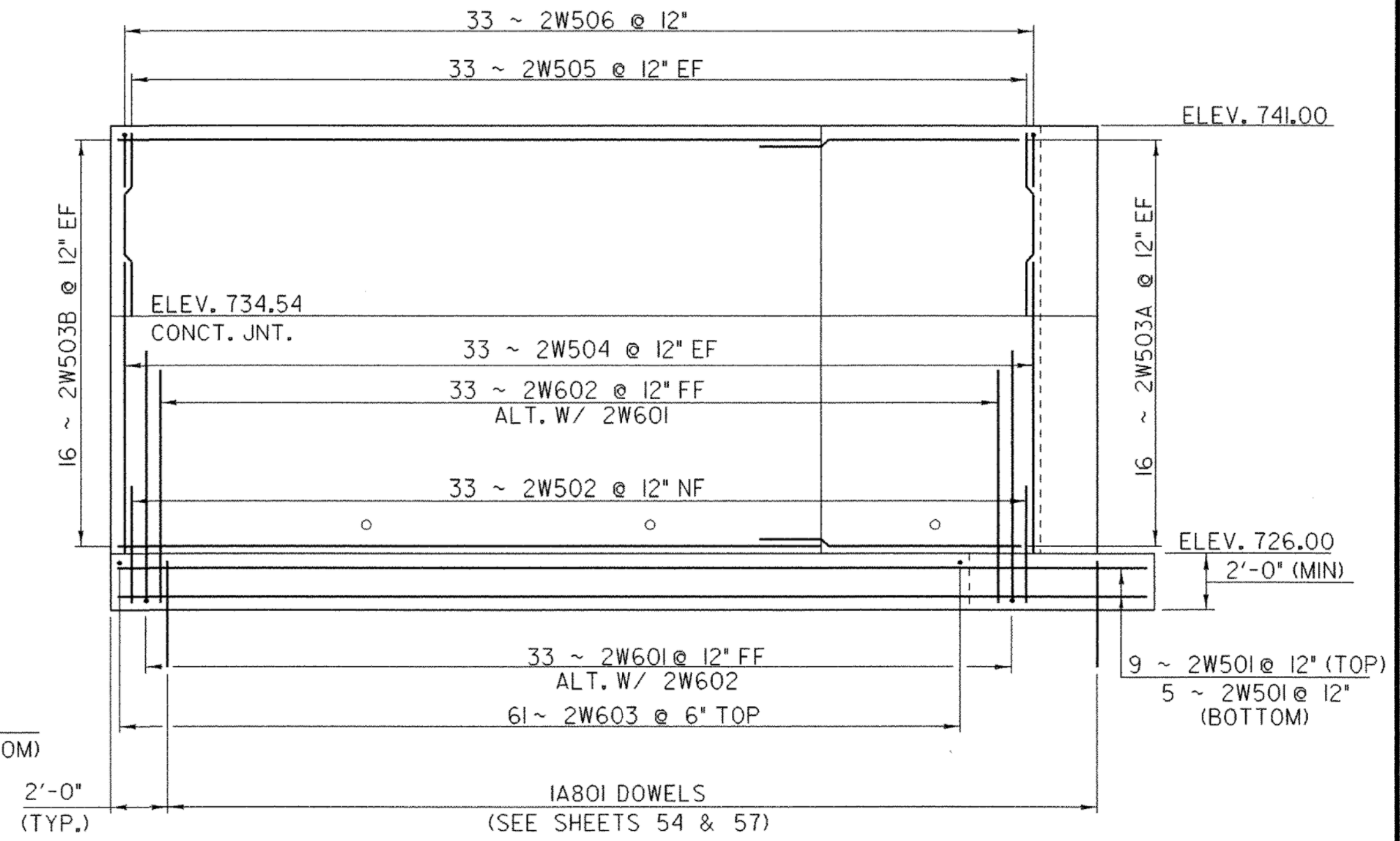
**WINGWALL #1 ELEVATION**

SCALE 1/4" = 1'-0"  
1 0 2 4 6



**WINGWALL #2 SECTION**

SCALE 1/4" = 1'-0"  
1 0 2 4 6

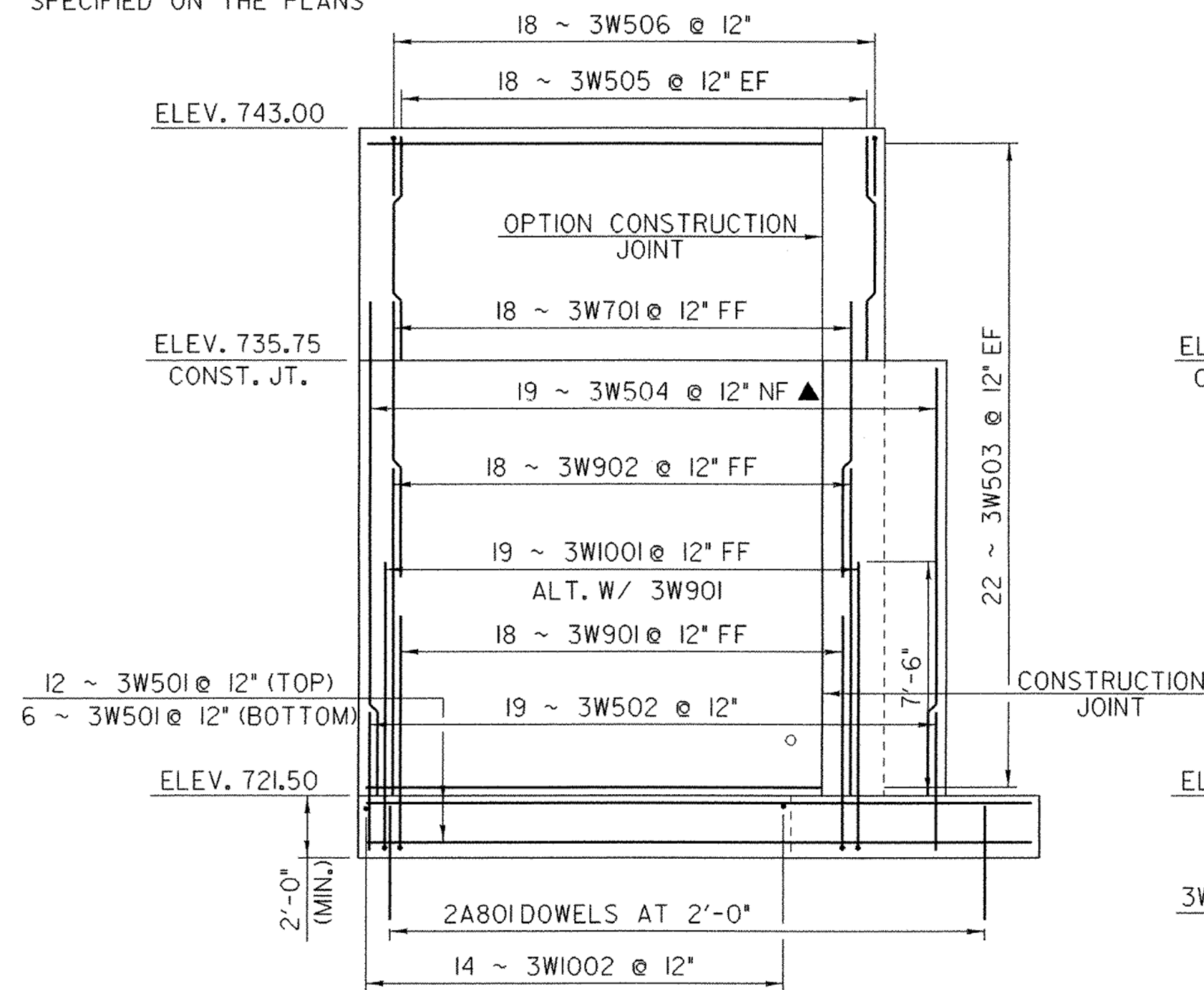


**WINGWALL #2 ELEVATION**

SCALE 1/4" = 1'-0"  
1 0 2 4 6

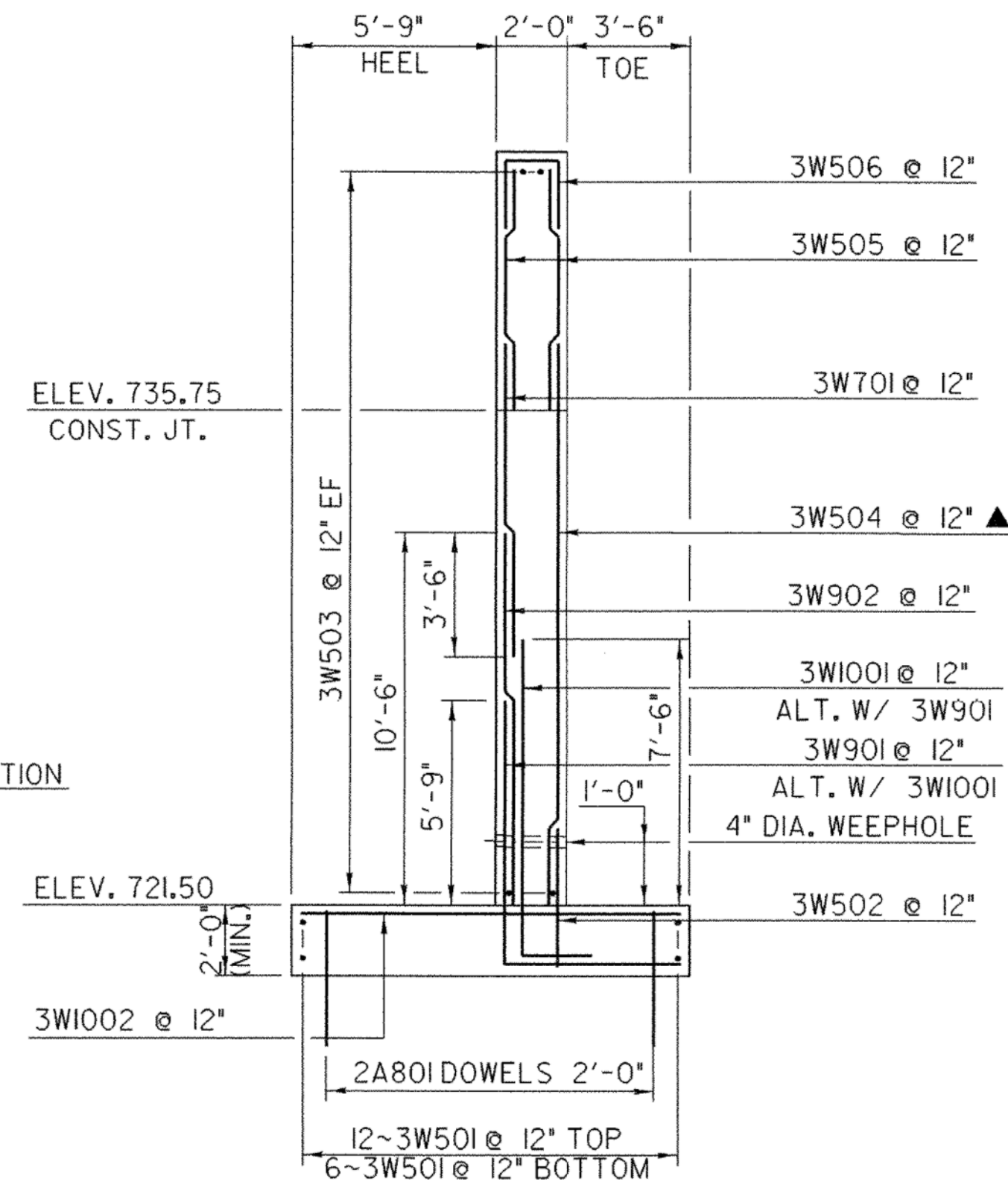
**NOTE:**

- NF = NEAR FACE
- FF = FAR FACE
- EF = EACH FACE
- ▲ = CUT TO FIT IN FIELD
- 3" CLEAR UNLESS OTHERWISE SPECIFIED ON THE PLANS
- 2'-2" BAR LAP UNLESS OTHERWISE SPECIFIED ON THE PLANS



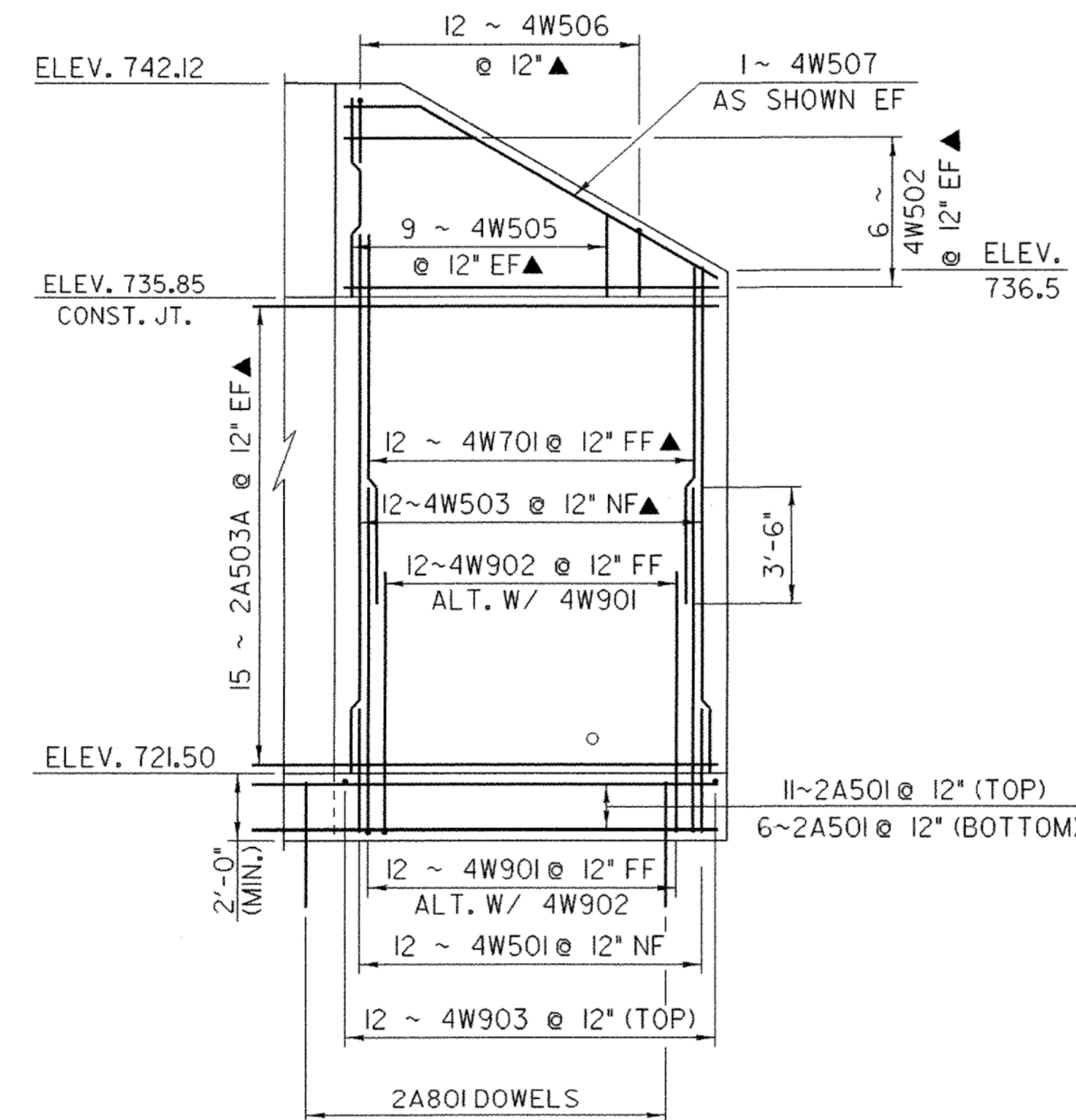
**WINGWALL #3 ELEVATION**

SCALE 1/4" = 1'-0"  
1 0 2 4 6



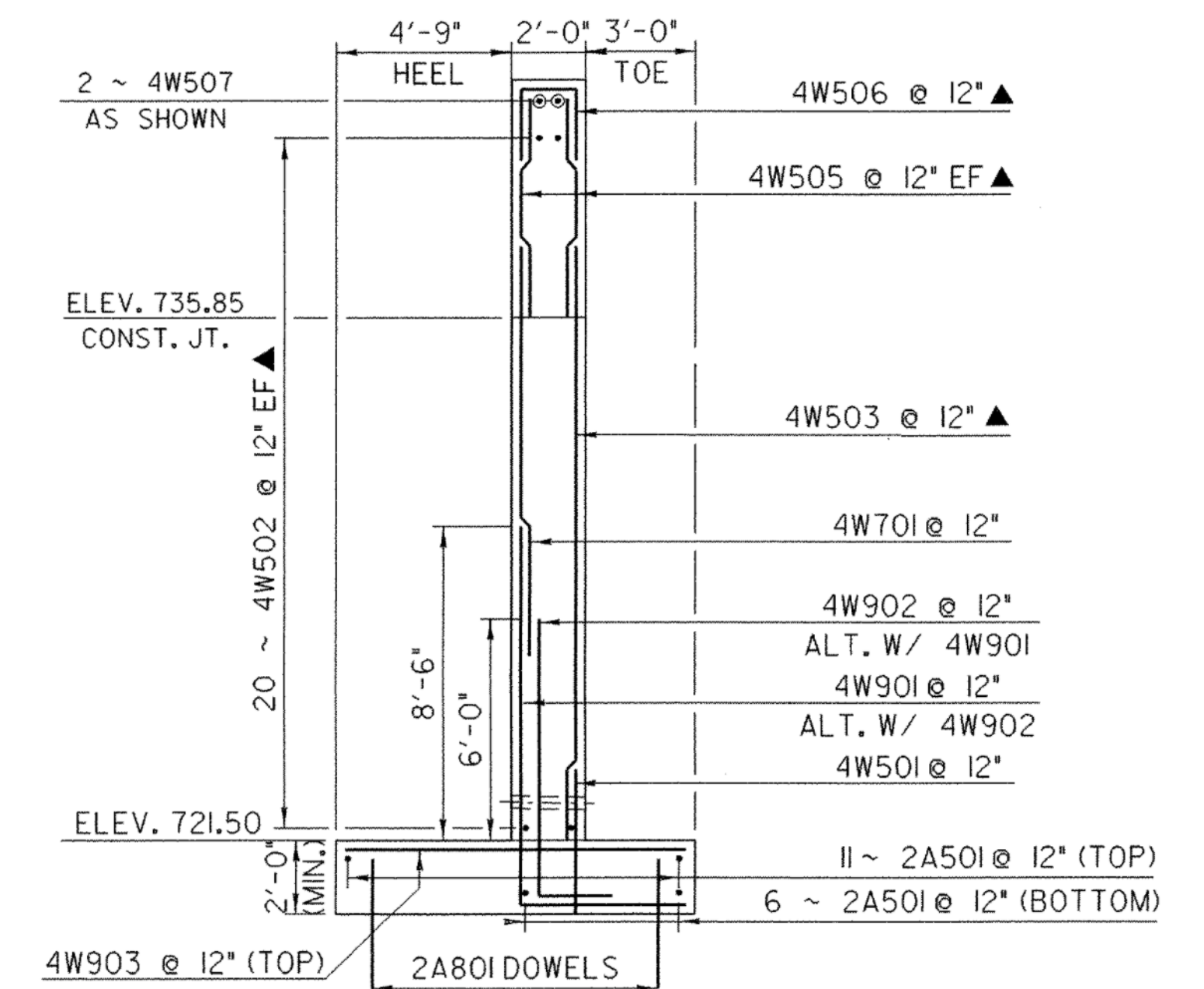
**WINGWALL #3 SECTION**

SCALE 1/4" = 1'-0"  
1 0 2 4 6



**WINGWALL #4 ELEVATION**

SCALE 1/4" = 1'-0"  
1 0 2 4 6



**WINGWALL #4 SECTION**

SCALE 1/4" = 1'-0"  
1 0 2 4 6

ABUTMENT #2 AND WINGWALL #4 HAVE BEEN REVISED DUE TO THE OCCURRENCE OF COMPETENT BEDROCK SHALLOWER THEN EXPECTED. SEE SHEET PLOT DATE OF 11-JUL-2007.

PROJECT NAME:	BARTON	PLOT DATE:	02-APR-2007
PROJECT NUMBER:	BRO 1449 (29)	DRAWN BY:	J. SALVATORI
FILE NAME:	/str5/01j168/sj168sub.dgn	CHECKED BY:	T. SUMNER
PROJECT LEADER:	W. SYMONDS	SHEET	58 OF 84
DESIGNED BY:	J. LACROIX		
	sj168ww.i		