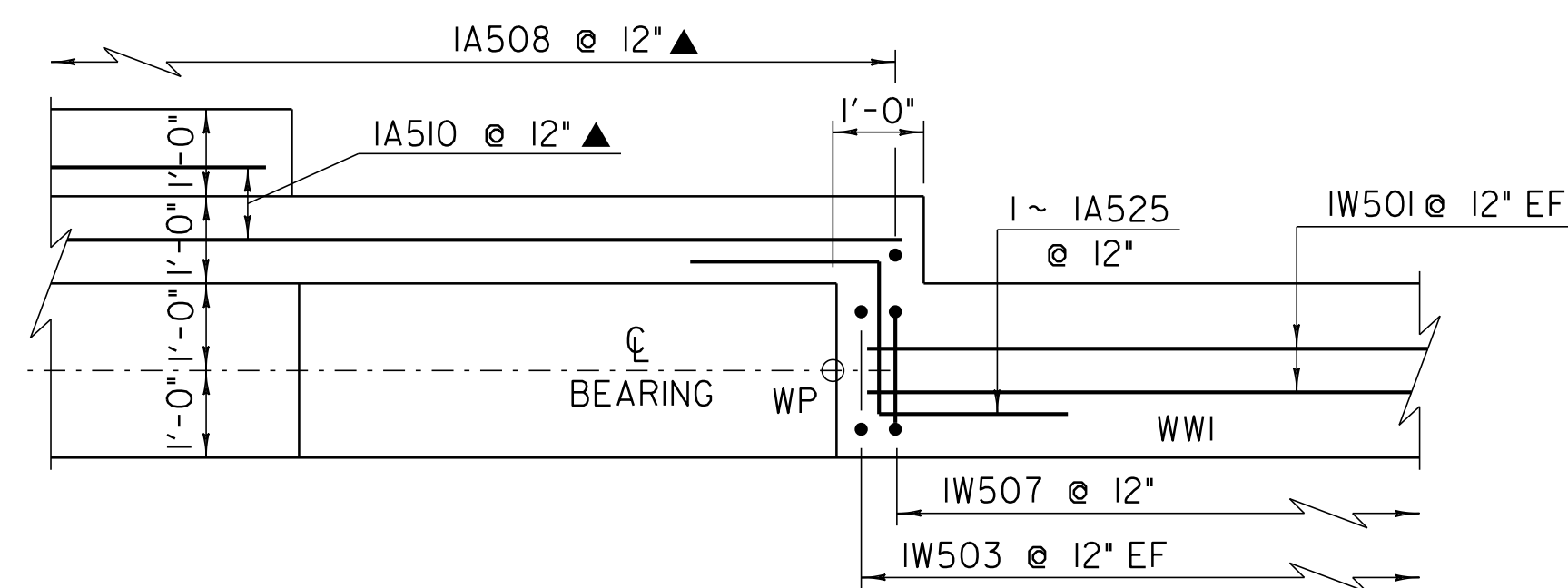


ABUTMENT #2B SECTION

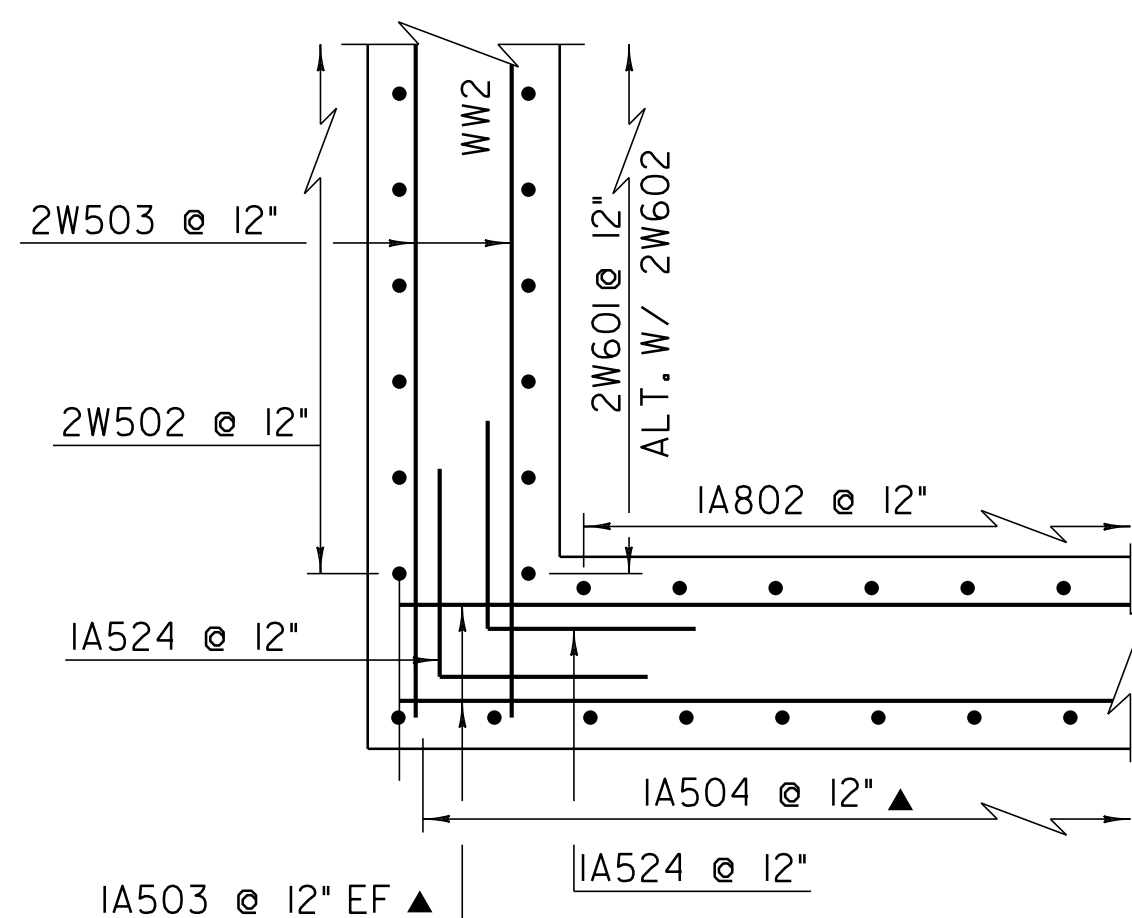
SCALE 1/2" = 1'-0"

**ABUTMENT #2 AND WINGWALL #4
HAVE BEEN REVISED DUE TO THE
OCCURRENCE OF COMPETENT BEDROCK
SHALLOWER THEN EXPECTED**



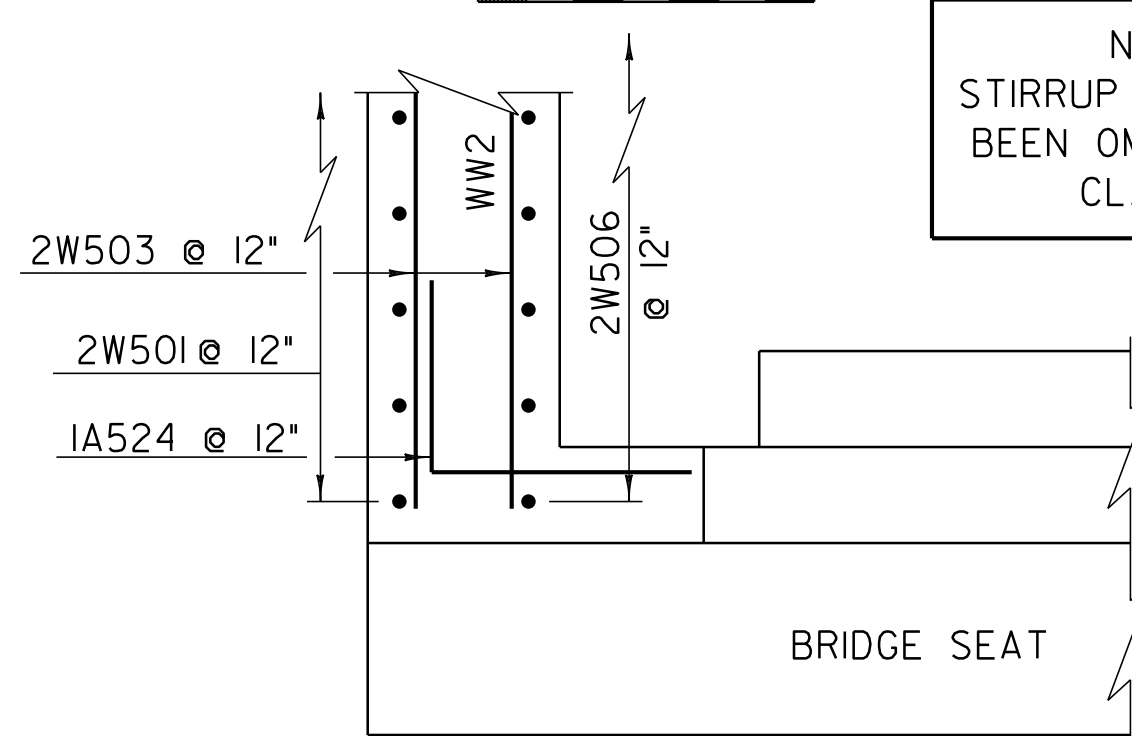
CORNER DETAIL WW1
ABOVE BRIDGE SEAT

SCALE 1/2" = 1'-0"



CORNER DETAIL WW2
BELOW BRIDGE SEAT

SCALE 1/4" = 1'-0"



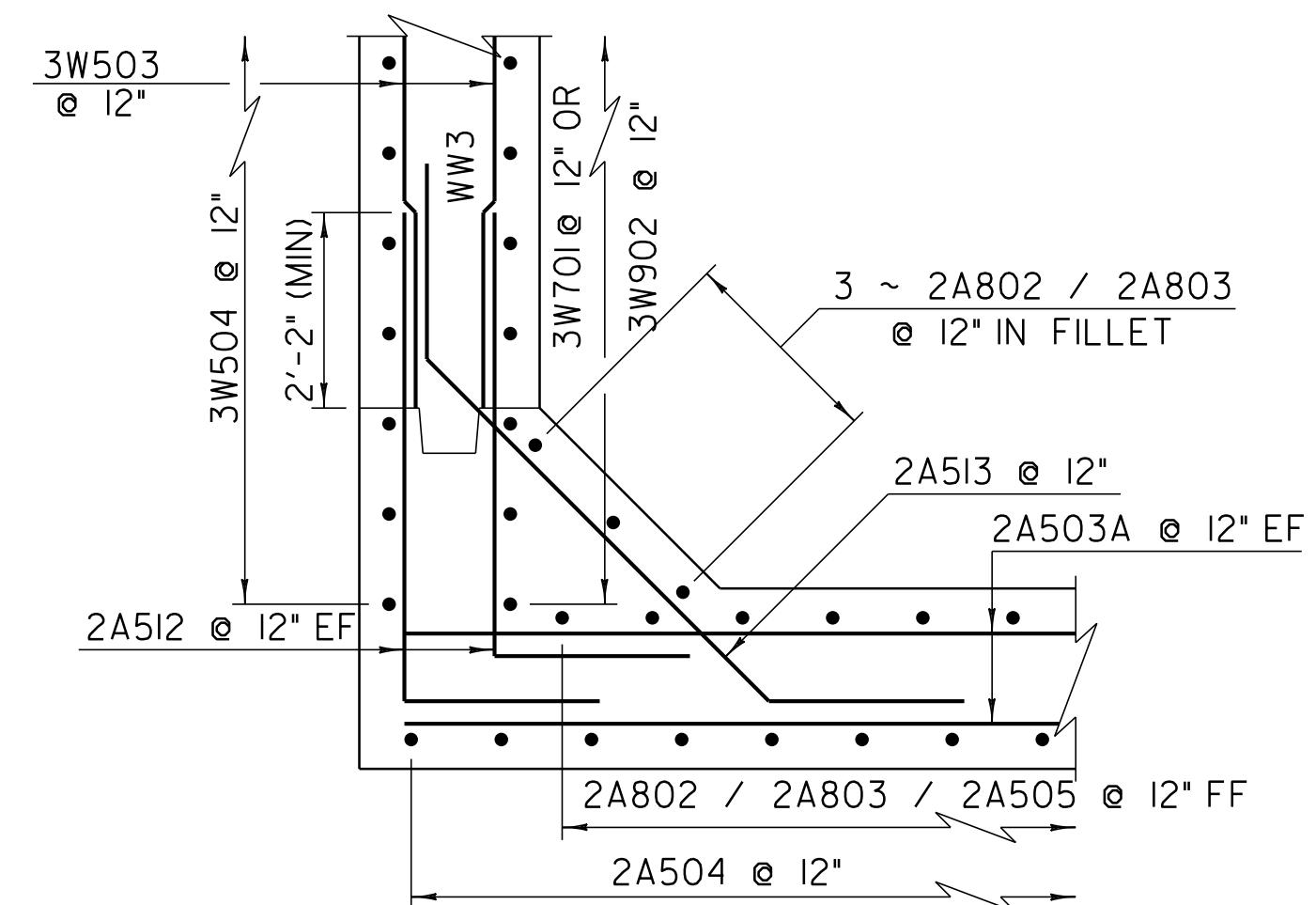
CORNER DETAIL WW2
ABOVE BRIDGE SEAT

SCALE 1/4" = 1'-0"

NOTE:
STIRRUP BARS HAVE
BEEN OMITTED FOR
CLARITY.

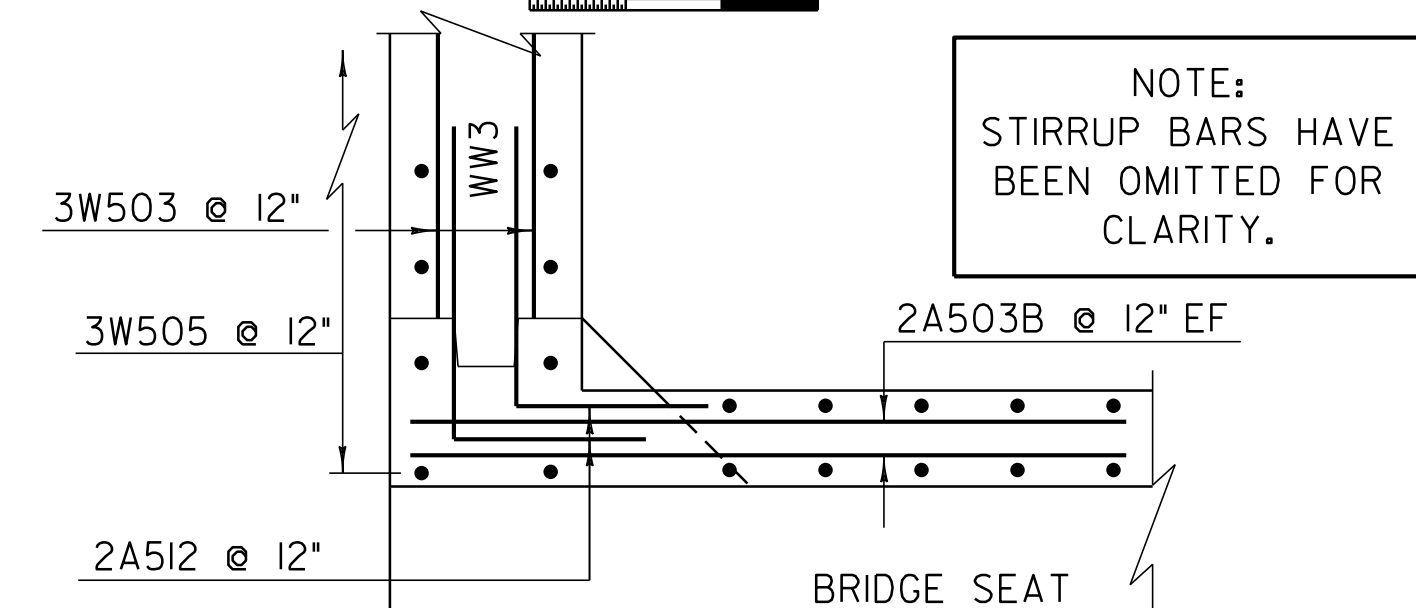
NOTE:

NF = NEAR FACE
FF = FAR FACE
EF = EACH FACE
▲ = CUT TO FIT IN FIELD
3" CLEAR UNLESS OTHERWISE
SPECIFIED ON THE PLANS
2'-2" BAR LAP UNLESS OTHERWISE
SPECIFIED ON THE PLANS



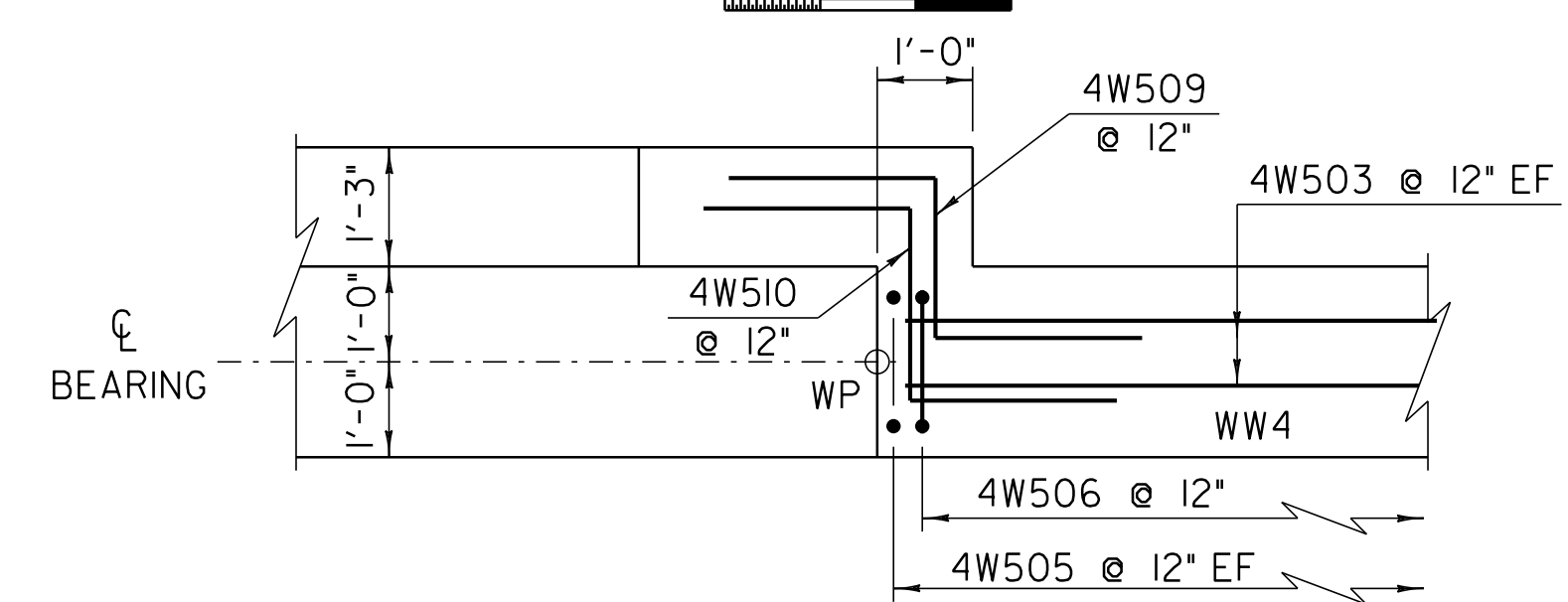
CORNER DETAIL WW3
BELOW BRIDGE SEAT

SCALE 1/2" = 1'-0"



CORNER DETAIL WW3
ABOVE BRIDGE SEAT

SCALE 1/2" = 1'-0"



CORNER DETAIL WW4
ABOVE BRIDGE SEAT

SCALE 1/2" = 1'-0"

CORNER DETAIL

PROJECT NAME: BARTON
PROJECT NUMBER: BRO 1449 (29)

FILE NAME: /str5/01j168/sj168sub.dgn PLOT DATE: 12-SEP-2011
PROJECT LEADER: W. SYMONDS DRAWN BY: J. SALVATORI
DESIGNED BY: J. LACROIX CHECKED BY: T. SUMNER
sj168abs.i SHEET 56 OF 84