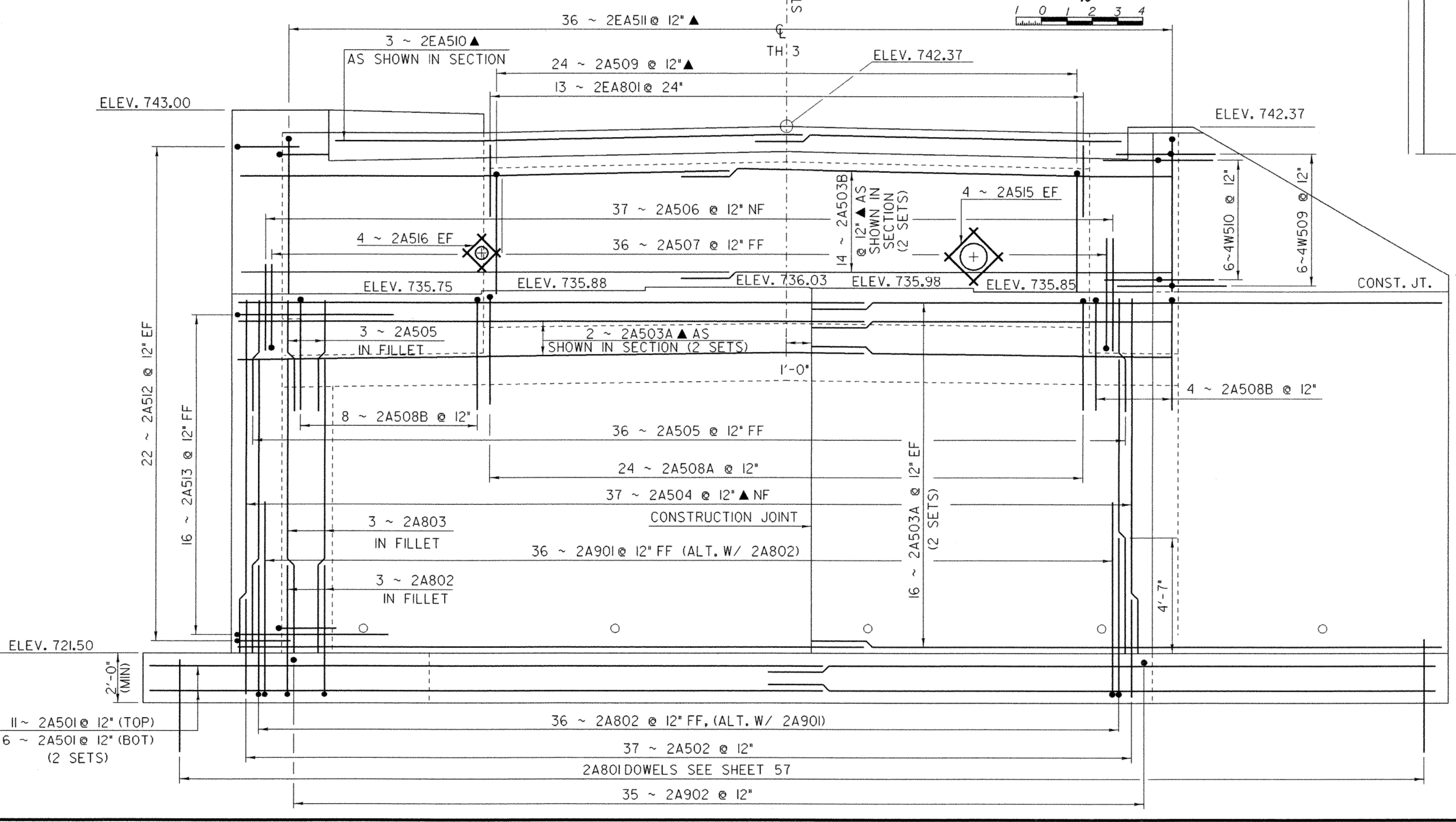
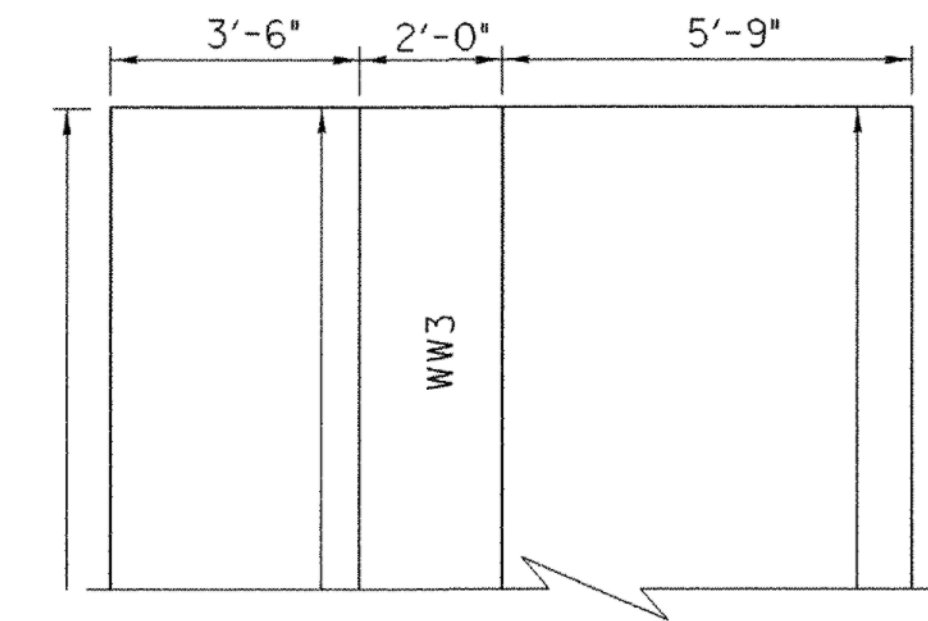


ABUTMENT #2 FOOTING PLAN

SCALE 3/8" = 1'-0"
1 0 1 2 3 4



* THIS DIMENSION IS THEORETICAL AND MAY CHANGE DEPENDING UPON THE OUTCOME OF THE BEAM PROFILES.

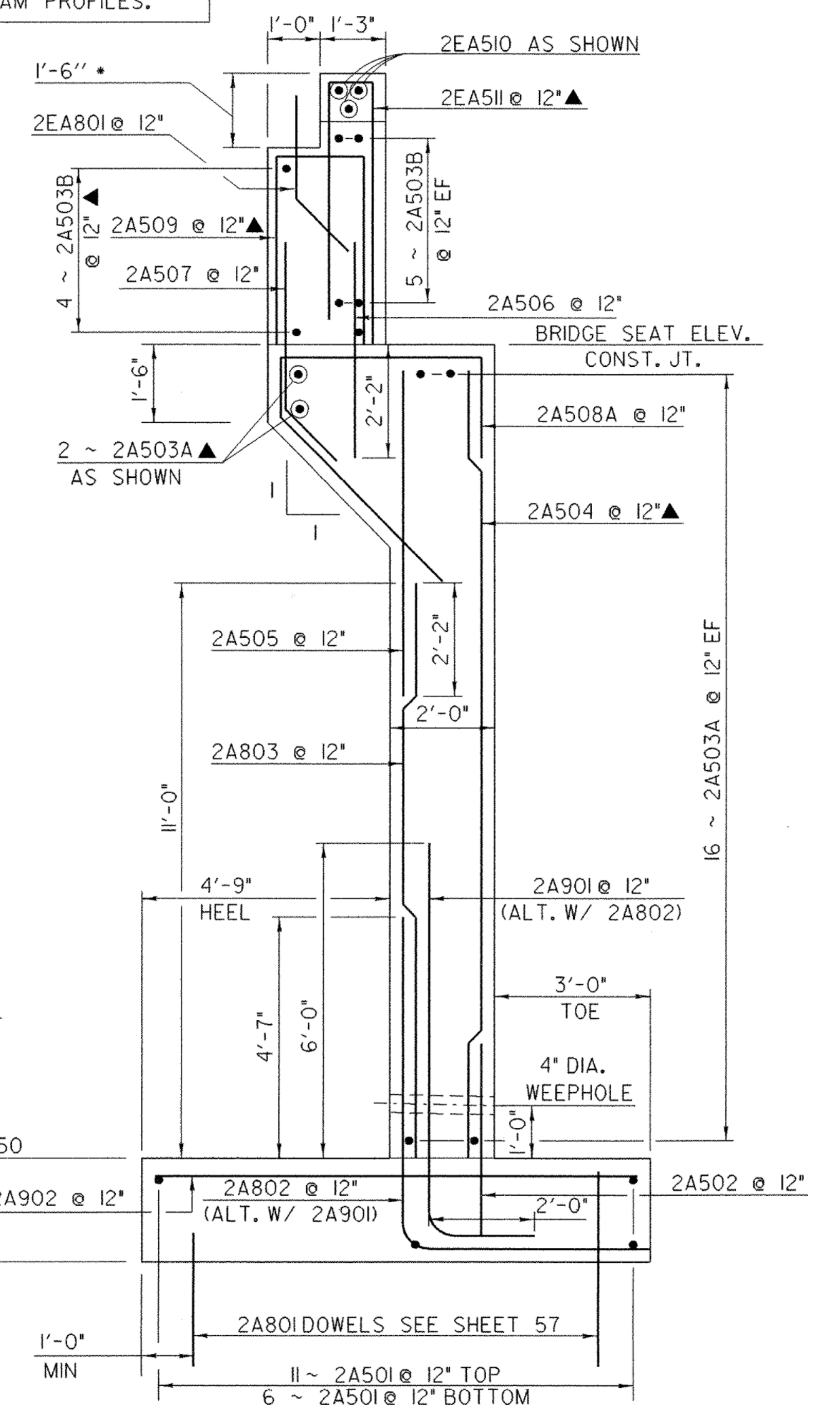


NOTE:
 NF = NEAR FACE
 FF = FAR FACE
 EF = EACH FACE
 ▲ = CUT TO FIT IN FIELD
 3" CLEAR UNLESS OTHERWISE SPECIFIED ON THE PLANS
 2'-2" BAR LAP UNLESS OTHERWISE SPECIFIED ON THE PLANS

ABUTMENT #2

ELEVATION

SCALE 3/8" = 1'-0"
1 0 1 2 3 4



ABUTMENT #2 SECTION

SCALE 1/2" = 1'-0"
1 0 1 2

ABUTMENT #2 AND WINGWALL #4 HAVE BEEN REVISED DUE TO THE OCCURRENCE OF COMPETENT BEDROCK SHALLOWER THEN EXPECTED. SEE REVISED SHEET, PLOT DATE OF 06-JUL-2007

ABUTMENT #2 DETAILS

PROJECT NAME:	BARTON
PROJECT NUMBER:	BRO 1449 (29)
FILE NAME: /str5/01j168/sj168sub.dgn	PLOT DATE: 02-APR-2007
PROJECT LEADER: W. SYMONDS	DRAWN BY: J. SALVATORI
DESIGNED BY: J. LACROIX	CHECKED BY: T. SUMNER
sj168ab2.i	SHEET 55 OF 84