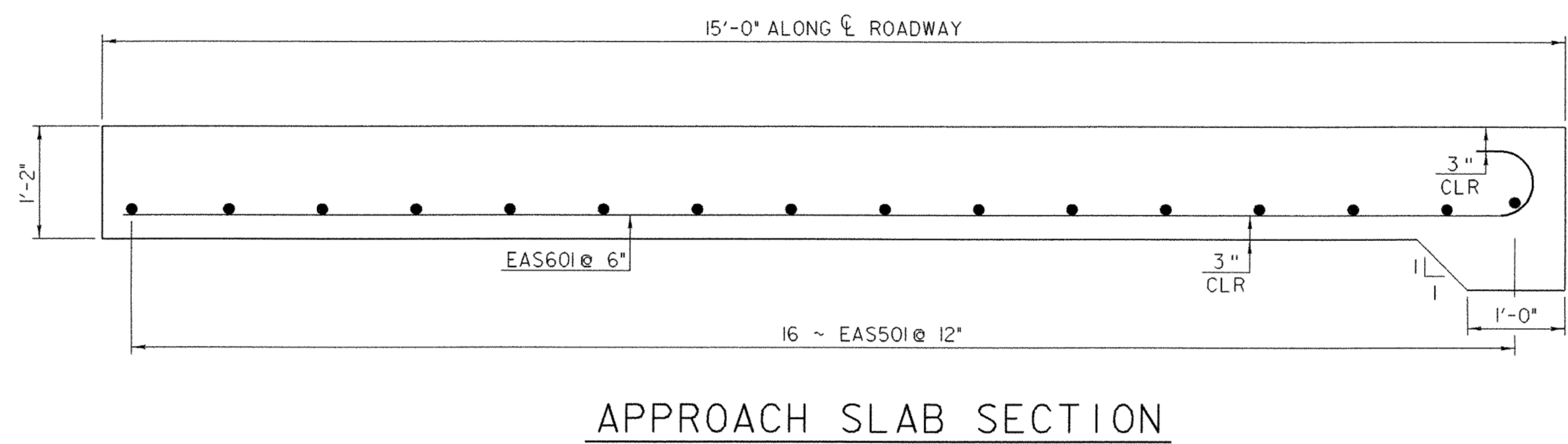
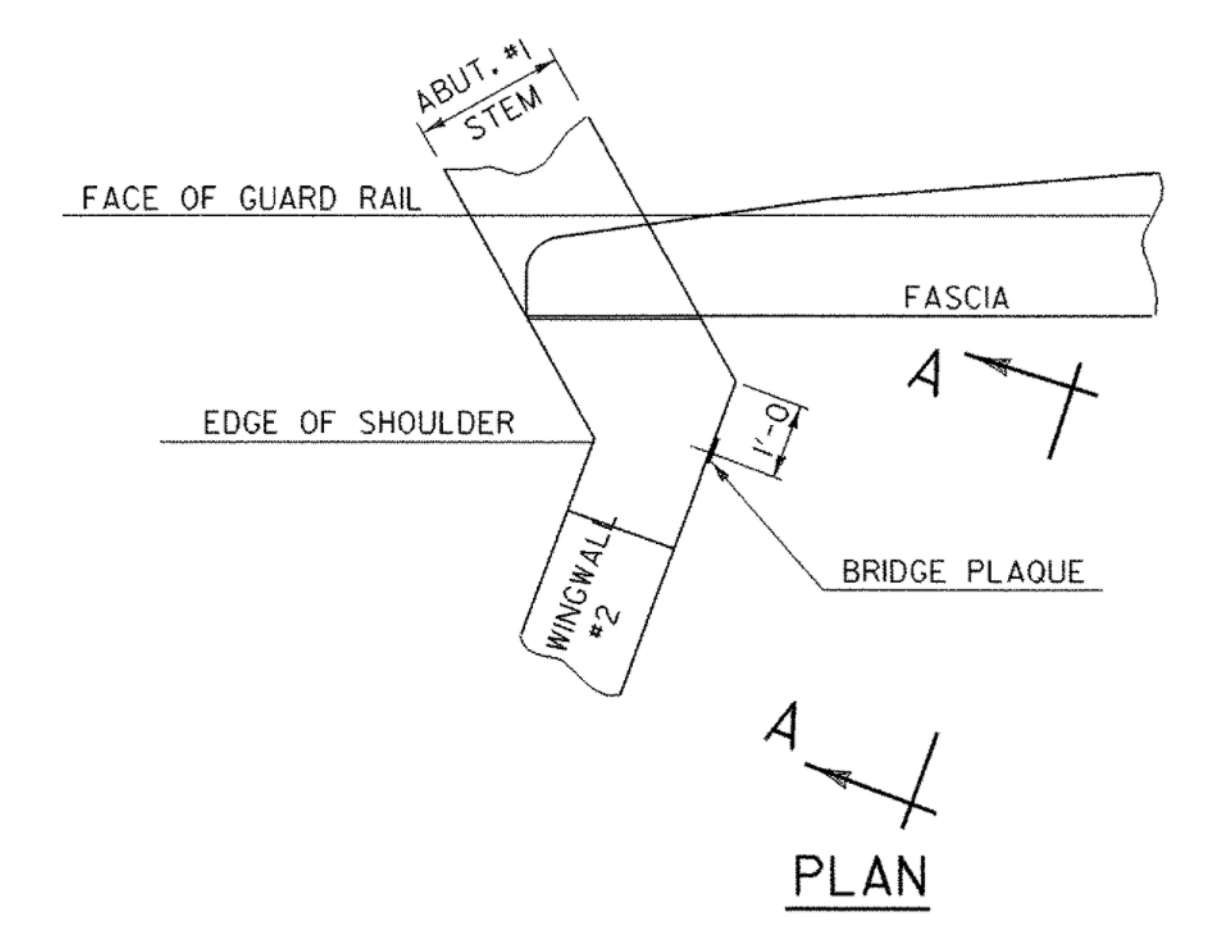
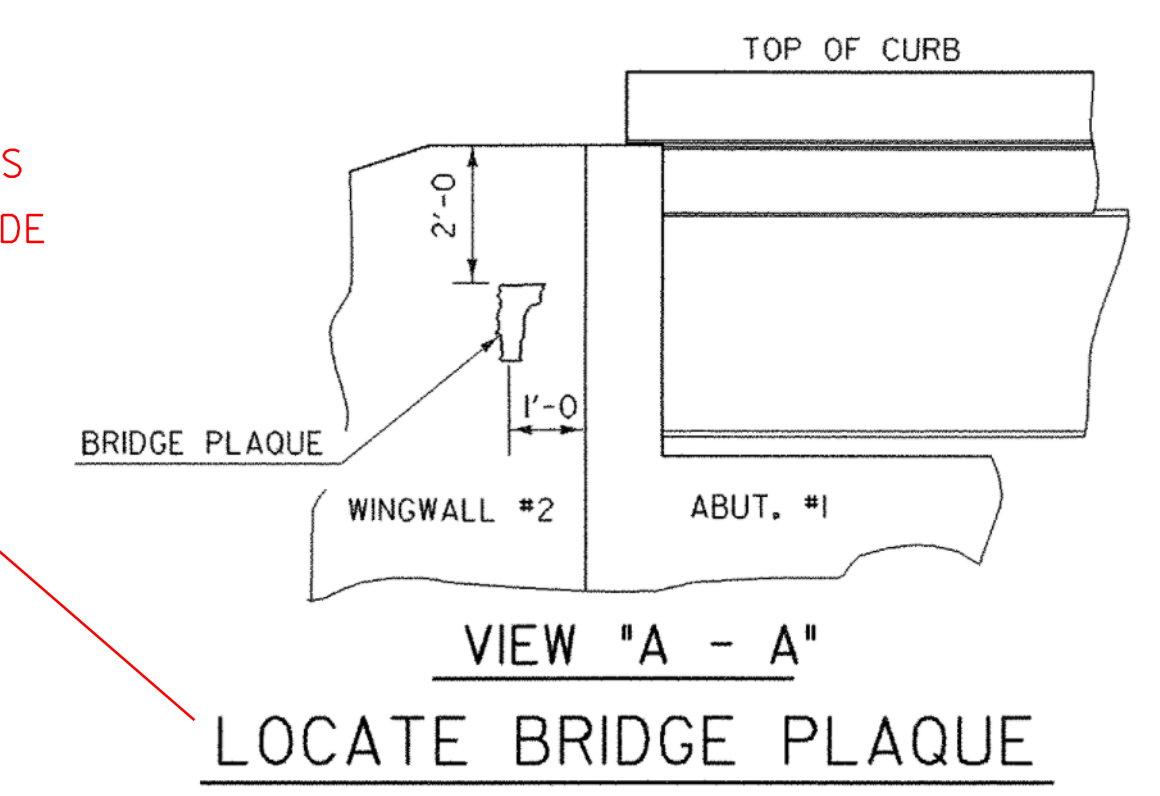


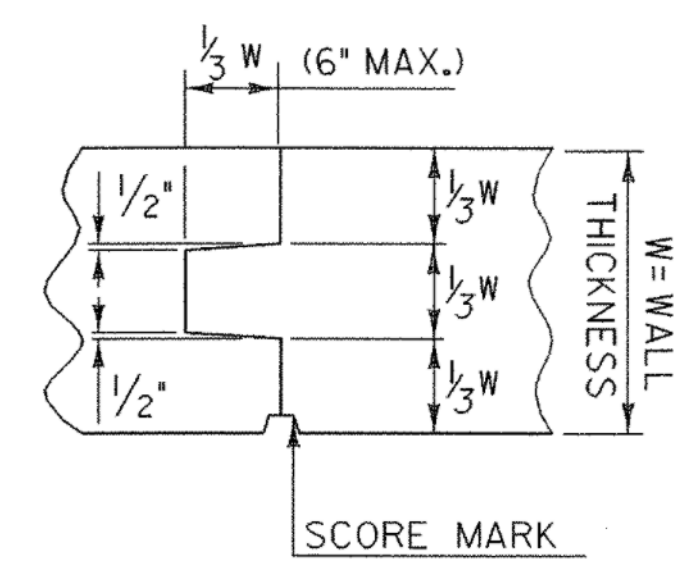
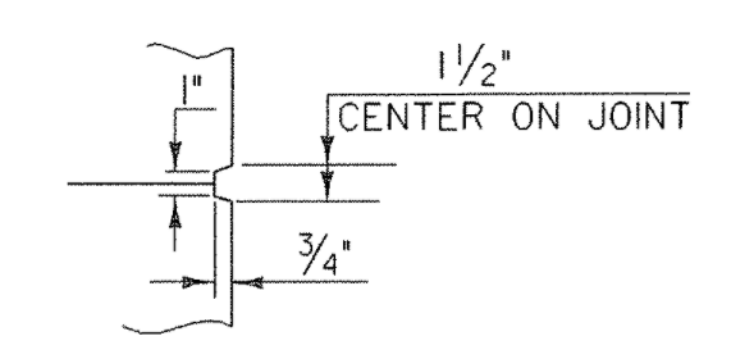
- LONGITUDINAL CONSTRUCTION JOINT**
1. THE SURFACE OF THE CONCRETE CONSTRUCTION JOINTS SHALL BE CLEANED AND FREE OF LAITENANCE AND SHALL BE ROUGHENED TO AN AMPLITUDE OF 1/4"
  2. IMMEDIATLY BEFORE NEW CONCRETE IS PLACED, ALL CONSTRUCTION JOINTS SHALL BE WETTED AND STANDING WATER REMOVED.



NOTE: BRIDGE PLAQUE LOCATED ON INNER FACE OF TEXAS RAIL ON DOWNSTREAM SIDE OF BRIDGE.



THE BRIDGE PLAQUE WILL BE SUPPLIED BY THE AGENCY OF TRANSPORTATION AND SHALL BE INSTALLED BY THE CONTRACTOR AT ABUTMENT #1 ON THE RIGHT SIDE AS SHOWN OR AS DIRECTED BY THE ENGINEER.



**NOTE:**  
NF = NEAR FACE  
FF = FAR FACE  
EF = EACH FACE  
▲ = CUT TO FIT IN FIELD  
3" CLEAR UNLESS OTHERWISE SPECIFIED ON THE PLANS

**APPROACH SLAB DETAILS**

PROJECT NAME:	BARTON
PROJECT NUMBER:	BRO 1449 (29)
FILE NAME: /str5/01j168/sj168sup.dgn	PLOT DATE: 02-APR-2007
PROJECT LEADER: W. SYMONDS	DRAWN BY: J. GILMORE
DESIGNED BY: J. REED	CHECKED BY: J. REED
sj168asd.i	SHEET 49 OF 84

TYPICAL VERTICAL CONCRETE CONSTRUCTION JOINT