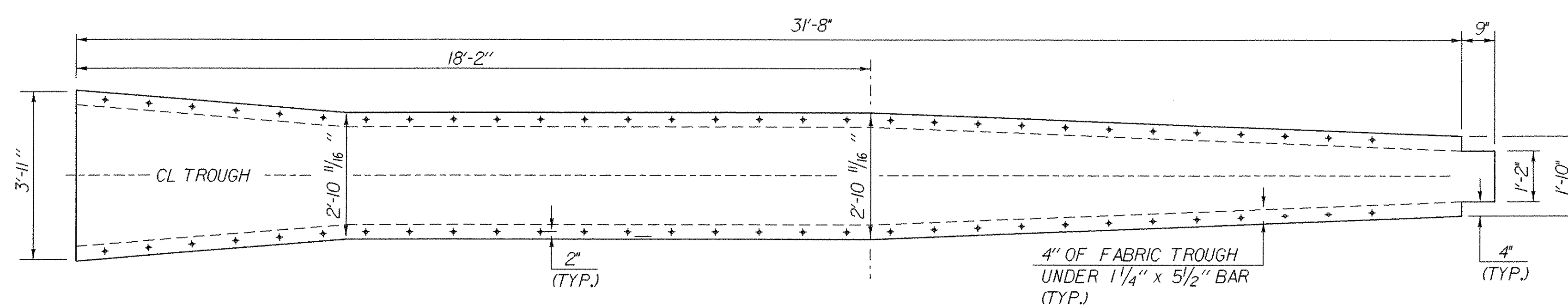


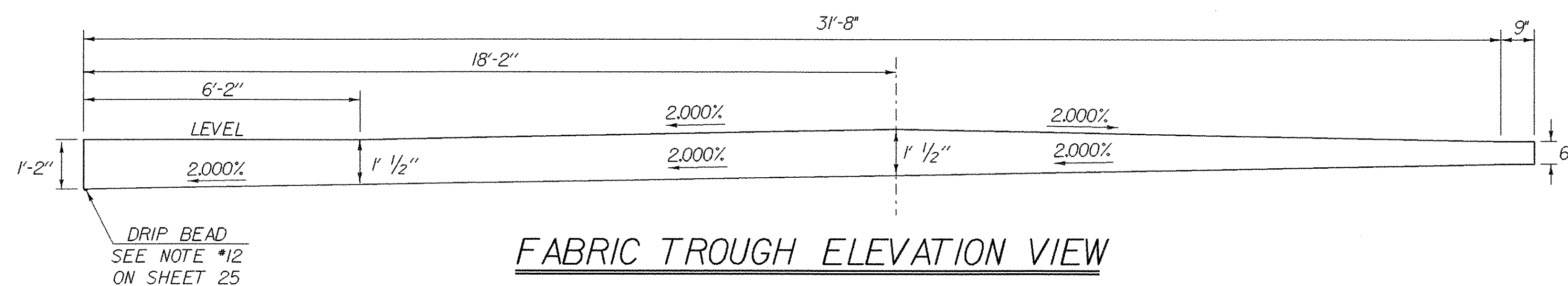
**EXPANSION JOINT PLAN VIEW**

SCALE 1/2" = 1'-0"  
 1 0 1 2



**FABRIC TROUGH PLAN VIEW**

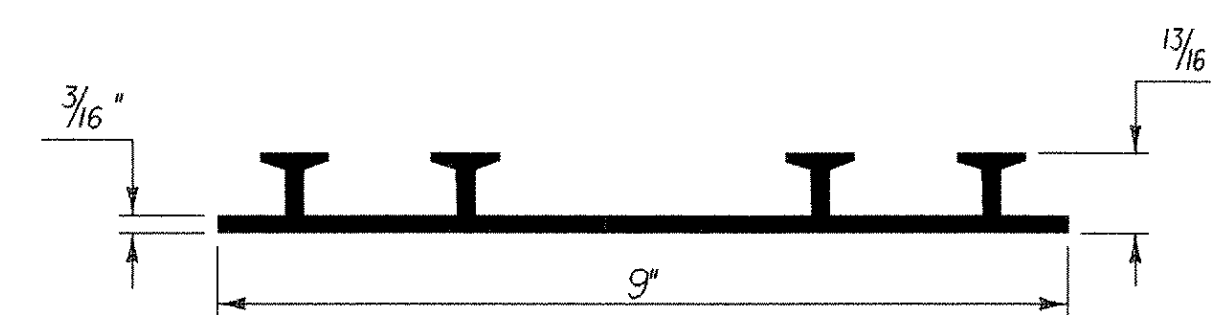
SCALE 1/2" = 1'-0"  
 1 0 1 2



**FABRIC TROUGH ELEVATION VIEW**

SCALE 1/2" = 1'-0"  
 1 0 1 2

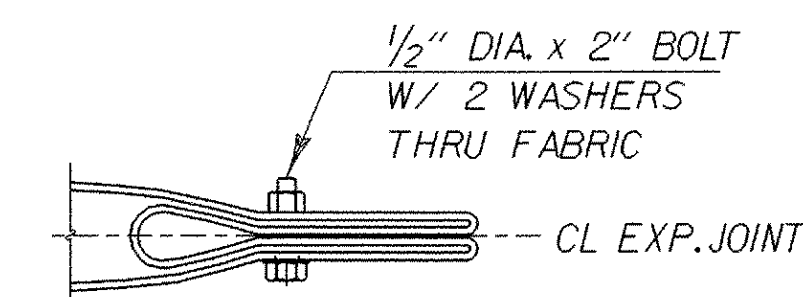
NOTE: THE LOCATION OF THE FERRULES AND STUDS MAY NEED TO BE ADJUSTED IN THE AREAS OF THE BRACKETS.



**P.V.C. WATERSTOP FOR CONSTRUCTION JOINTS**

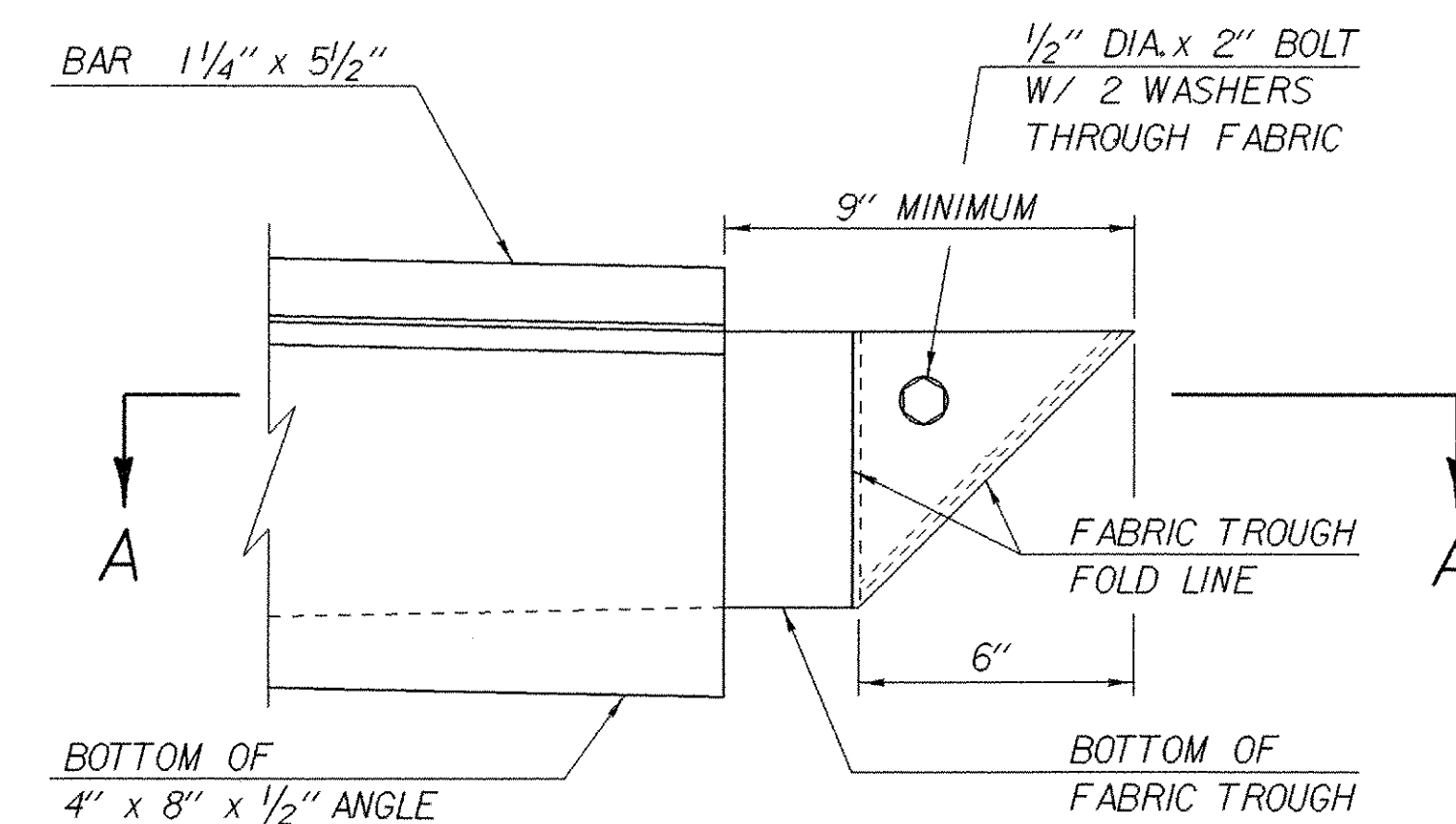
NOT TO SCALE

THE COSTS FOR P.V.C. WATERSTOP SHALL BE INCLUDED IN THE UNIT PRICE BID FOR HIGH PERFORMANCE CLASS B CONCRETE. OTHER CONFIGURATIONS MAY BE USED UPON APPROVAL OF THE STRUCTURES ENGINEER.



**VIEW A - A**

NTS



**ELEVATION**

**FOLDED TROUGH END DETAILS**

NTS

**ROADWAY EXPANSION JOINT DETAILS**

PROJECT NAME:	BARTON
PROJECT NUMBER:	BRO 1449 (29)
FILE NAME: /str5/01j168/sj168sup.dgn	PLOT DATE: 02-APR-2007
PROJECT LEADER: W. SYMONDS	DRAWN BY: J. GILMORE
DESIGNED BY: J. REED	CHECKED BY: J. REED
sj168exjr.i	SHEET 42 OF 84