

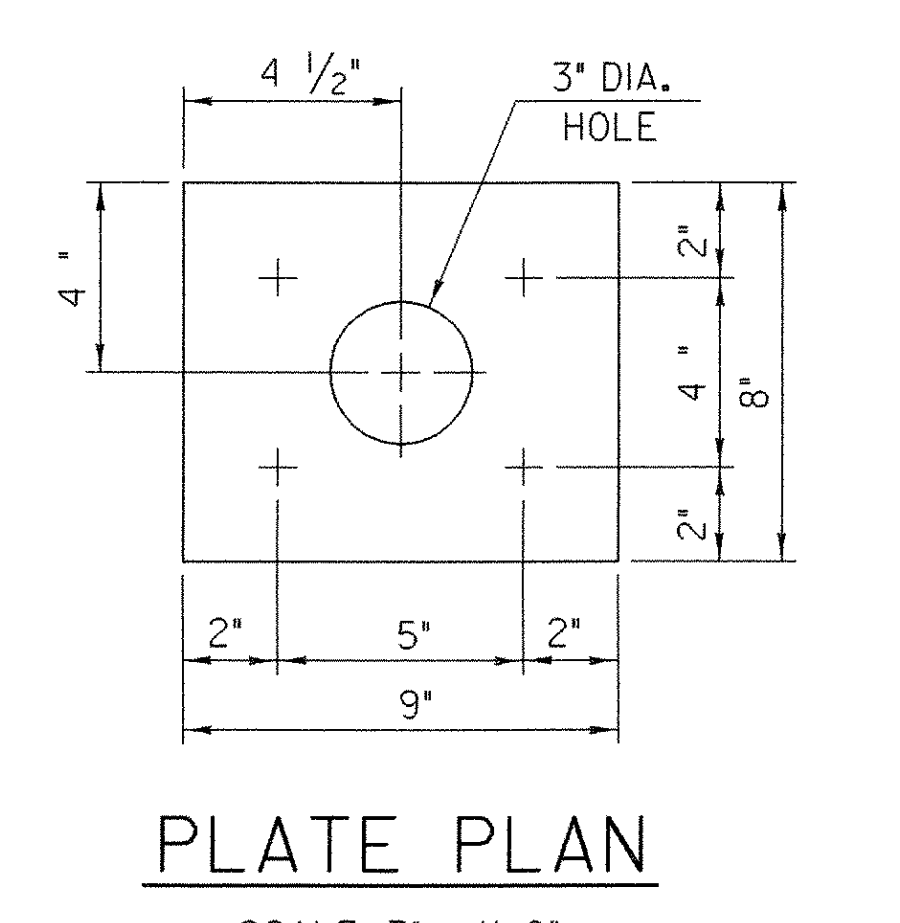
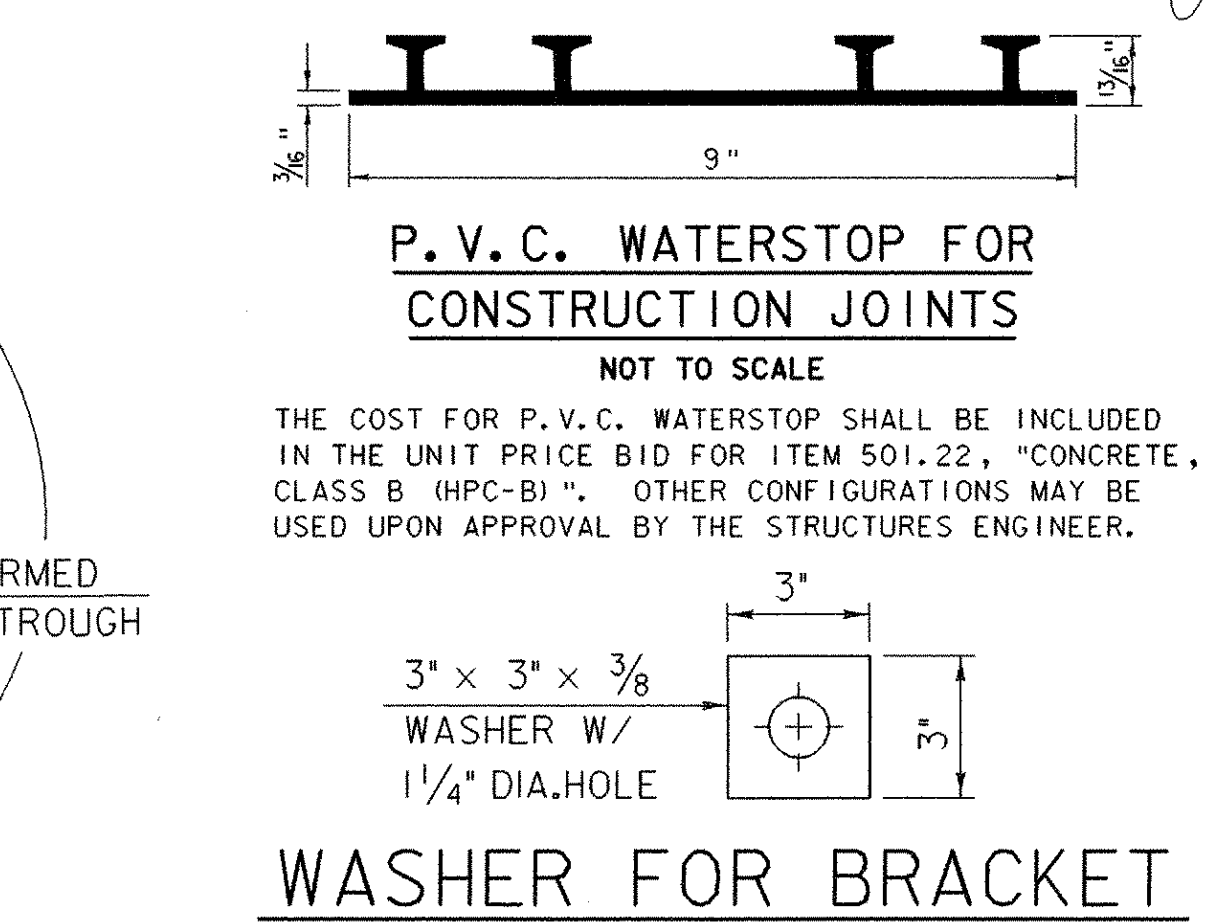
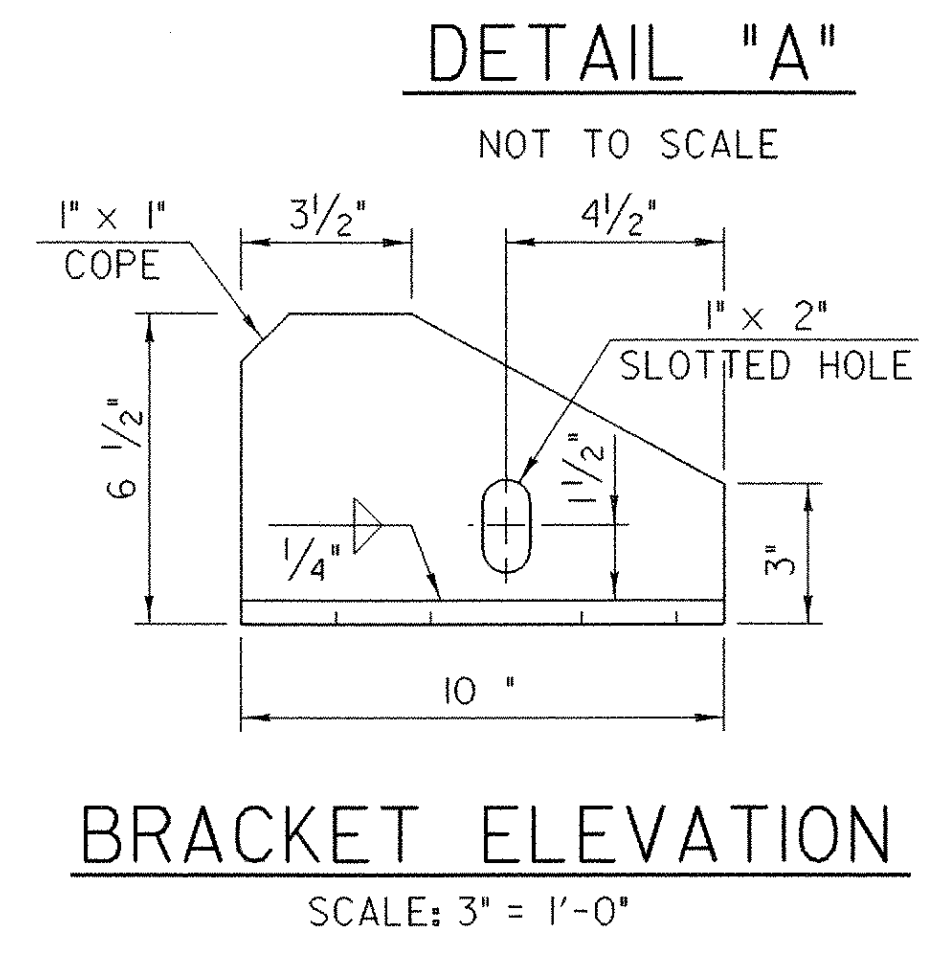
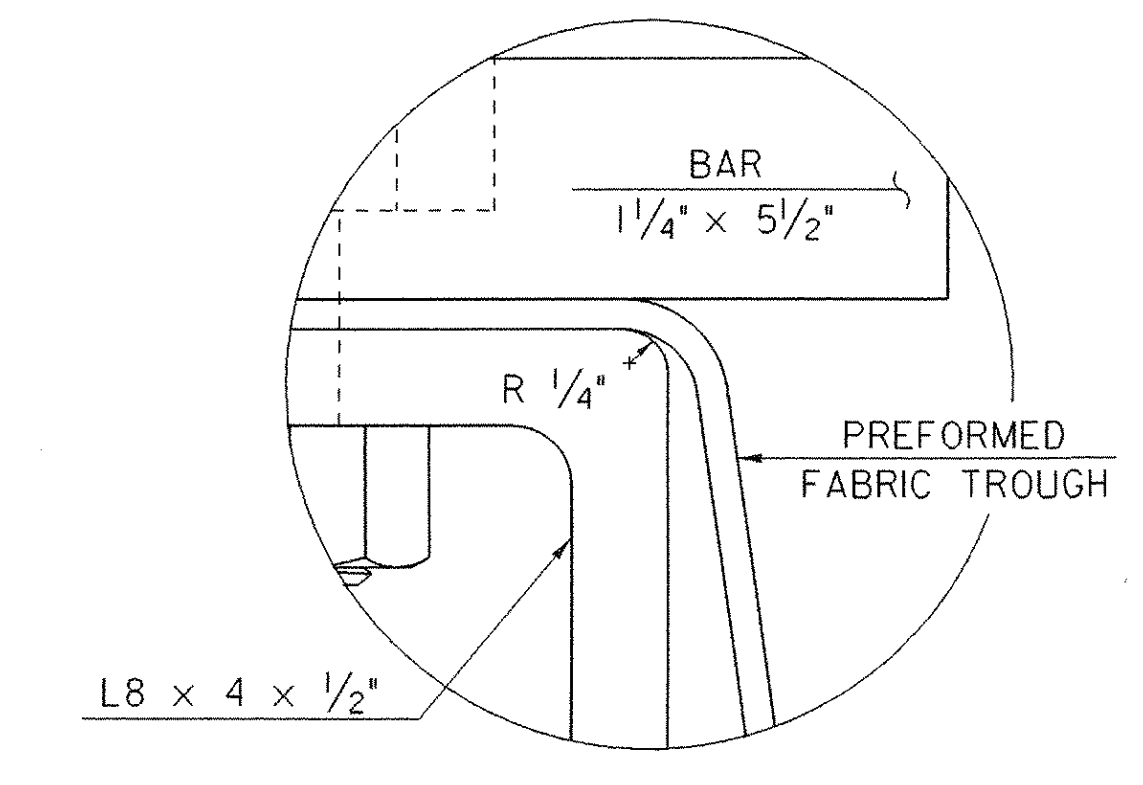
TABLE "A"

TEMP	"A" DIST.
0° F	1 3/8"
15° F	1 1/4"
30° F	1 1/8"
45° F	1"
60° F	7/8"
75° F	3/4"
90° F	5/8"
105° F	1/2"

"A" IS THE SETTING CONDITION BEFORE ANY LOADS ARE IN PLACE.

EXPANSION JOINT NOTES

1. DETAILS ON THIS SHEET ARE FOR ITEM 516.11 "BRIDGE EXPANSION JOINT, VERMONT".
2. PREFORMED FABRIC MATERIAL SHALL BE CONTINUOUS AND SHALL CONFORM TO SUBSECTION 707.07 OF THE SPECIFICATIONS.
3. BUTYL RUBBER TAPE SHALL CONFORM TO SUBSECTION 707.12 OF THE SPECIFICATIONS.
4. THE FINAL FINISH OF THE EXPANSION DEVICE SHALL BE COVERED DURING THE PLACING OF BRIDGE DECK CONCRETE.
5. ALL STEEL COMPONENTS SHALL BE AASHTO M270/M270M GRADE 36 GALVANIZED OR METALIZED AS PER SUBSECTION 506.15 (a) OR (b) UNLESS OTHERWISE SPECIFIED. THREADED RODS SHALL CONFORM TO ASTM A307, GRADE C. THE NUTS FOR THE THREADED RODS BE ASTM A563.
6. THE ITEM "BRIDGE EXPANSION JOINT, VERMONT" SHALL INCLUDE THE FABRICATION AND ERECTION OF THE COMPLETE JOINT ASSEMBLY INCLUDING ALL STEEL PLATES, BRACKETS, ANGLES, WELDED STUDS OR RODS, PREFORMED FABRIC DRAIN TROUGH MATERIAL AND PLASTIC DRAIN TUBES, BUTYL RUBBER TAPE AND ANY OTHER MISCELLANEOUS MATERIAL NECESSARY TO INSTALL THE JOINT.
7. THE 8 x 4 x 1/2 ANGLES SHALL BE FURNISHED AS ONE CONTINUOUS PIECE. THE 1 1/4 x 5 1/2 BARS EACH SIDE OF THE JOINT SHALL BE PROVIDED IN TWO EQUAL LENGTHS.
8. COAT CONCRETE CONTACT SURFACES WITH EPOXY BONDING COMPOUND. REFER TO SUBSECTION 516.05. PAYMENT SHALL BE INCLUDED IN THE UNIT PRICE BID FOR ITEM 516.11 "BRIDGE EXPANSION JOINT, VERMONT".
9. A 1" DIAMETER PLASTIC DRAIN TUBE PER SPECIFICATION 740.01 SHALL BE INSTALLED AS SHOWN AT THE FACE OF CURB. THE UPPER END IS TO BE PLUGGED AND WITH STEEL WOOL AND THE LOWER END IS TO EXTEND BELOW THE BOTTOM OF THE ADJACENT GIRDER. THE DRAIN TUBES SHALL BE FASTENED TO THE STRINGERS USING A METHOD APPROVED BY THE ENGINEER. PAYMENT FOR DRAIN TUBES AND THEIR INSTALLATION SHALL BE MADE INCIDENTAL TO ITEM 501.33. HIGH PERFORMANCE CONCRETE, CLASS A.
10. FILL COUNTERBORED HOLES WITH HOT POURED JOINT SEALER PER SPECIFICATION 707.04 AFTER BOLT INSTALLATION. PAYMENT FOR THE WORK SHALL BE INCIDENTAL TO ITEM 516.11 BRIDGE EXPANSION JOINT, VERMONT.
11. PAYMENT FOR WATERSTOP SHALL BE INCIDENTAL TO ITEM 501.34, CONCRETE, HIGH PERFORMANCE CLASS B.
12. A DRIP BEAD OF 1/4" x 7" STRIP OF PREFORMED MATERIAL SHALL BE CEMENTED TO THE BOTTOM OF THE FABRIC TROUGH USING AN ADHESIVE APPROVED BY THE MANUFACTURER. THE DRIP BEAD SHALL BE APPLIED 1" FROM THE DOWNSPOUT END OF THE TROUGH.
13. FABRIC TROUGH SHALL BE THOROUGHLY CLEANED AND FLUSHED AFTER PAVING OPERATIONS.
14. THE EXPANSION JOINT SHALL BE SHOP ASSEMBLED AND SHIPPED AS ONE UNIT.



ALL PLATES 1/2" THICK UNLESS OTHERWISE NOTED

EXPANSION JOINT TYPICAL SECTION

PROJECT NAME:	BARTON
PROJECT NUMBER:	BRO 1449 (29)
FILE NAME: /str5/01j168/sj168sup.dgn	PLOT DATE: 02-APR-2007
PROJECT LEADER: W. SYMONDS	DRAWN BY: J. GILMORE
DESIGNED BY: J. REED	CHECKED BY: J. REED
sj168ex2.i	SHEET 40 OF 84