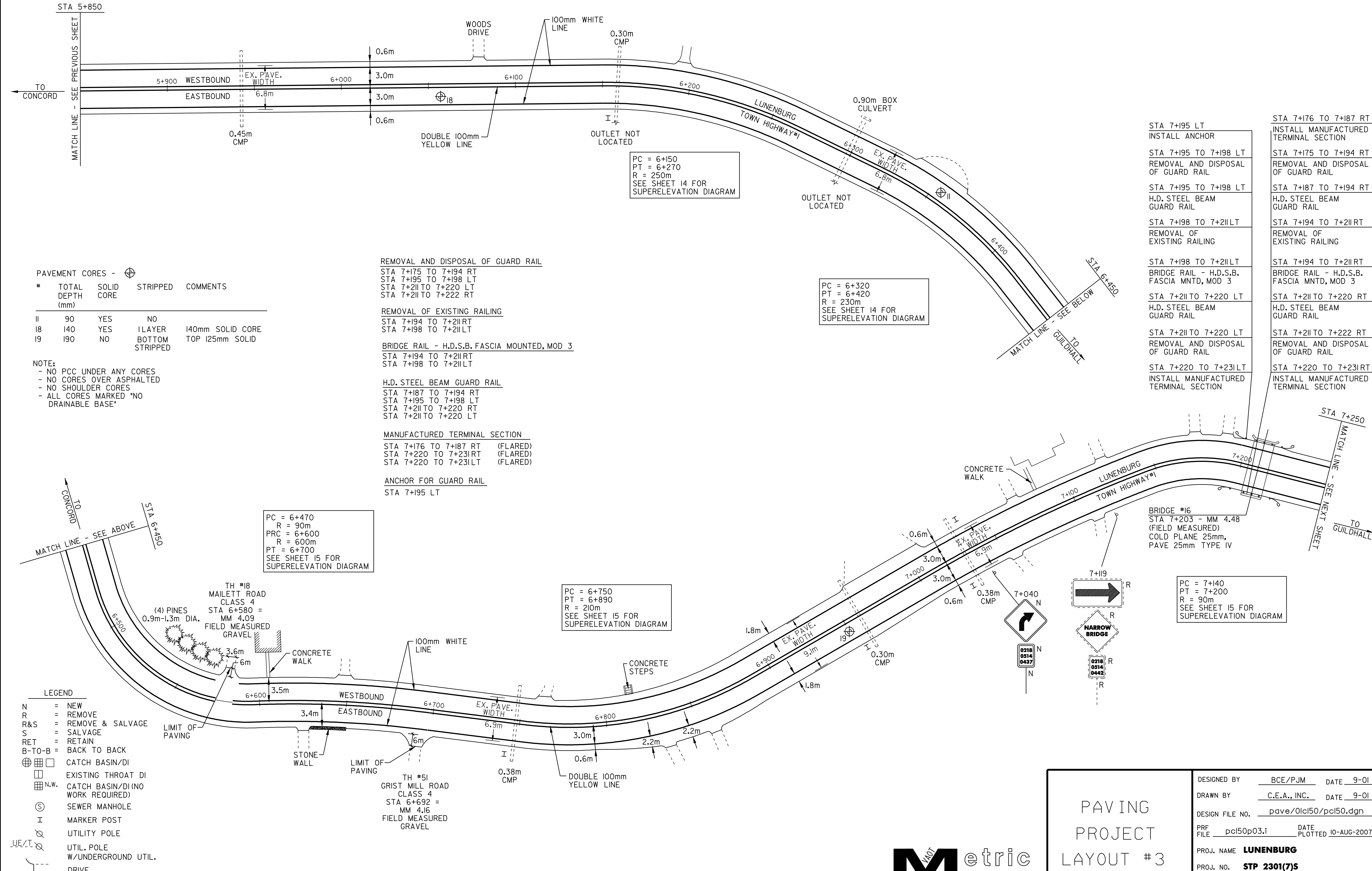


TEMPORARY AND 100mm YELLOW LINE
 STA 5+850 TO 7+250 SOLID LT&RT
 (WITH CENTERLINE BREAKS FOR TOWN HIGHWAYS)

TEMPORARY AND 100mm WHITE LINE
 STA 5+850 TO 7+250 SOLID LT&RT
 (WITH EDGELINE BREAKS FOR TOWN HIGHWAYS)

YIELDING MARKER POSTS
 STA 6+155 RT
 STA 6+748 RT
 STA 6+960 RT
 STA 7+030 LT&RT
 REMOVING SIGNS
 3



PAVEMENT CORES - ⊕

#	TOTAL DEPTH (mm)	SOLID CORE	STRIPPED	COMMENTS
11	90	YES	NO	
18	140	YES	1 LAYER	140mm SOLID CORE
19	190	NO	BOTTOM STRIPPED	TOP 125mm SOLID

NOTE:
 - NO PCC UNDER ANY CORES
 - NO CORES OVER ASPHALTED
 - NO SHOULDER CORES
 - ALL CORES MARKED "NO DRAINABLE BASE"

LEGEND

N	= NEW
R	= REMOVE
R&S	= REMOVE & SALVAGE
S	= SALVAGE
RET	= RETAIN
B-TO-B	= BACK TO BACK
⊕	CATCH BASIN/DI
⊕	EXISTING THROAT DI
⊕ N.W.	CATCH BASIN/DI (NO WORK REQUIRED)
⊙	SEWER MANHOLE
I	MARKER POST
⊕	UTILITY POLE
⊕	UTIL. POLE
⊕	W/UNDERGROUND UTIL.
---	DRIVE

DESIGNED BY BCE/PJM DATE 9-01
 DRAWN BY C.E.A., INC. DATE 9-01
 DESIGN FILE NO. pave/01cl50/pcl50.dgn
 PRF FILE pcl50p03.1 DATE PLOTTED 10-AUG-2007 14:
 PROJ. NAME **LUNENBURG**
 PROJ. NO. **STP 2301(7)S**
 SHEET **10** OF **20** SHEETS

PAVING PROJECT LAYOUT #3