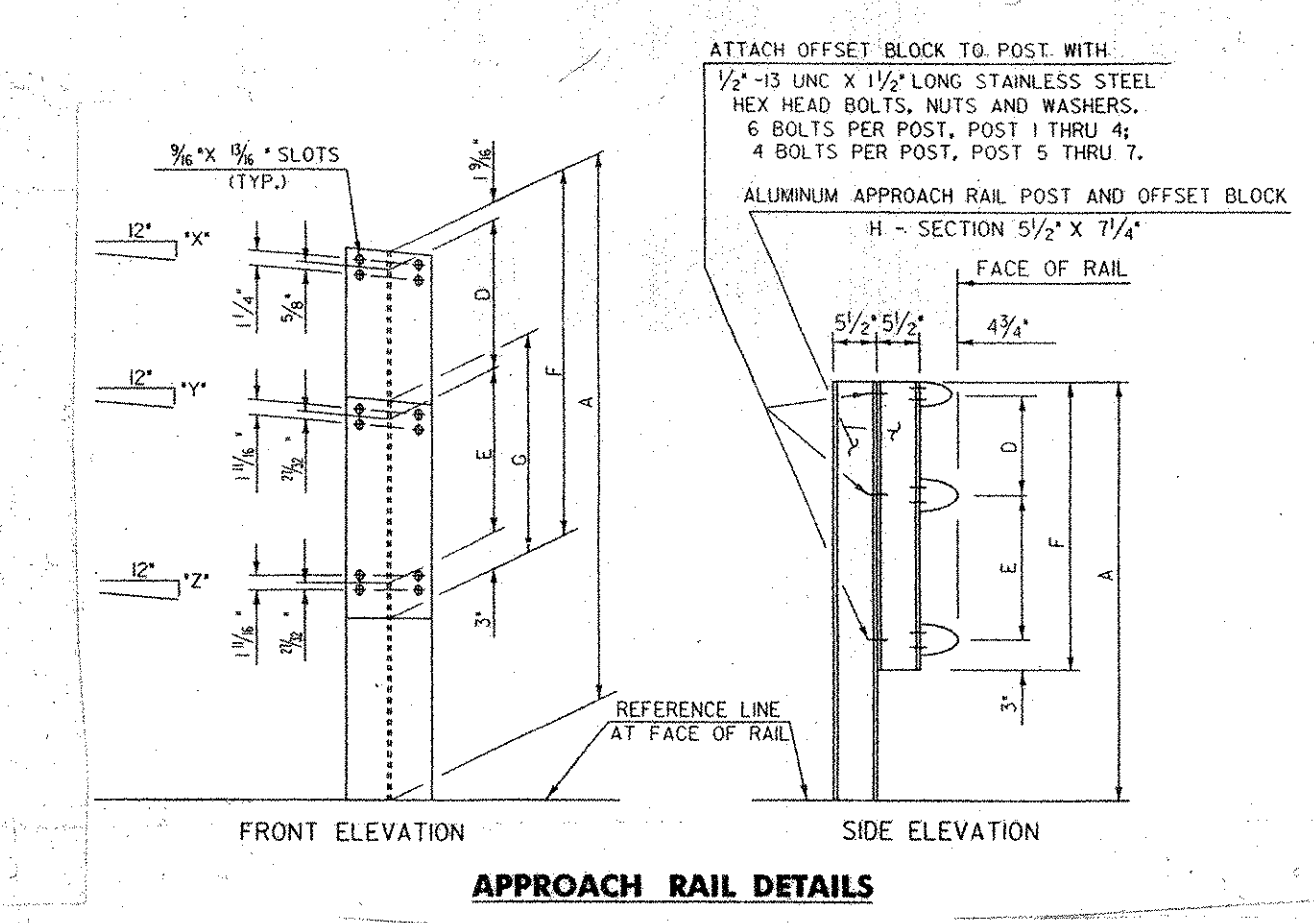


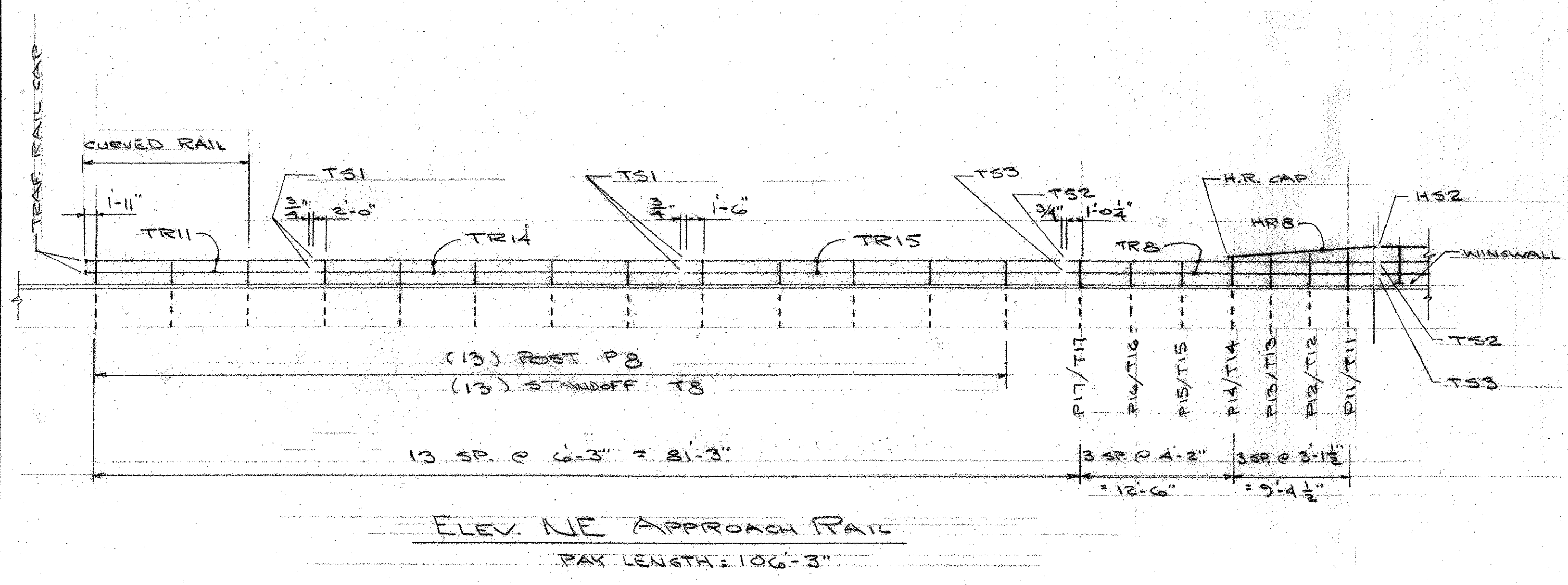
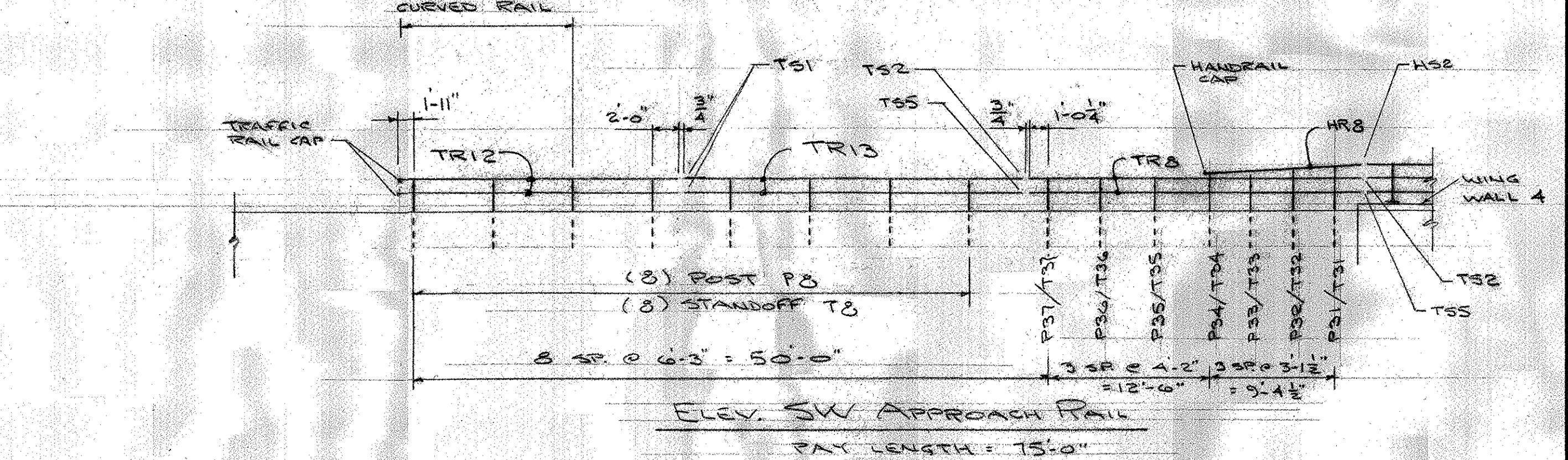
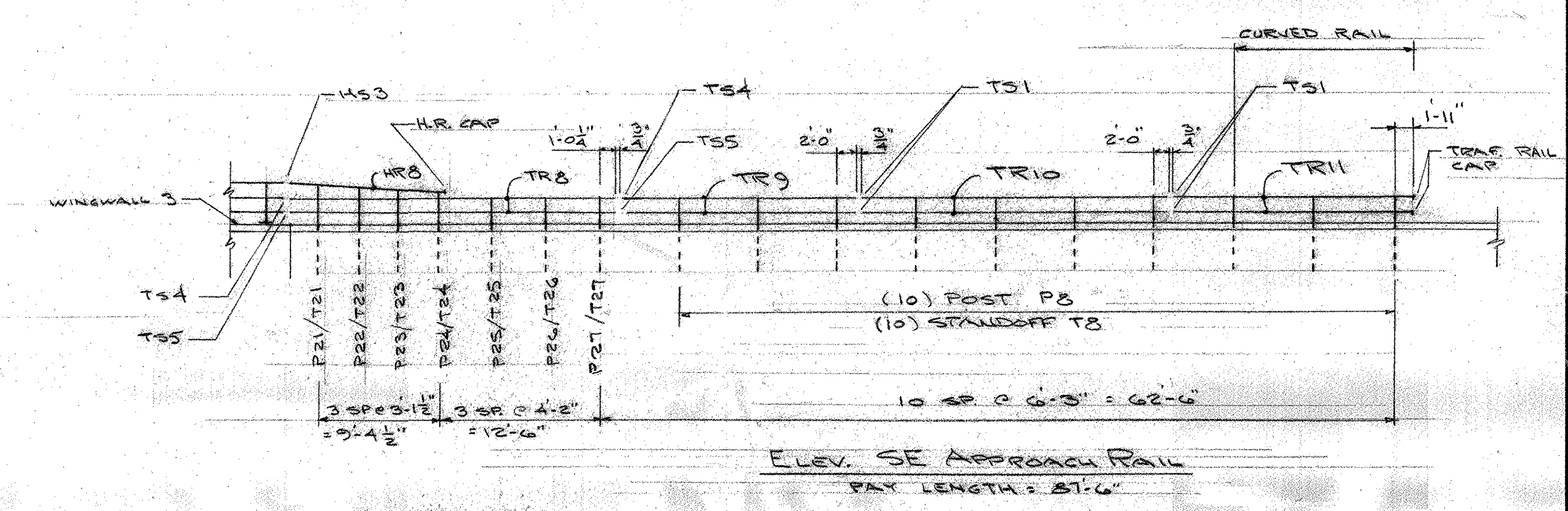
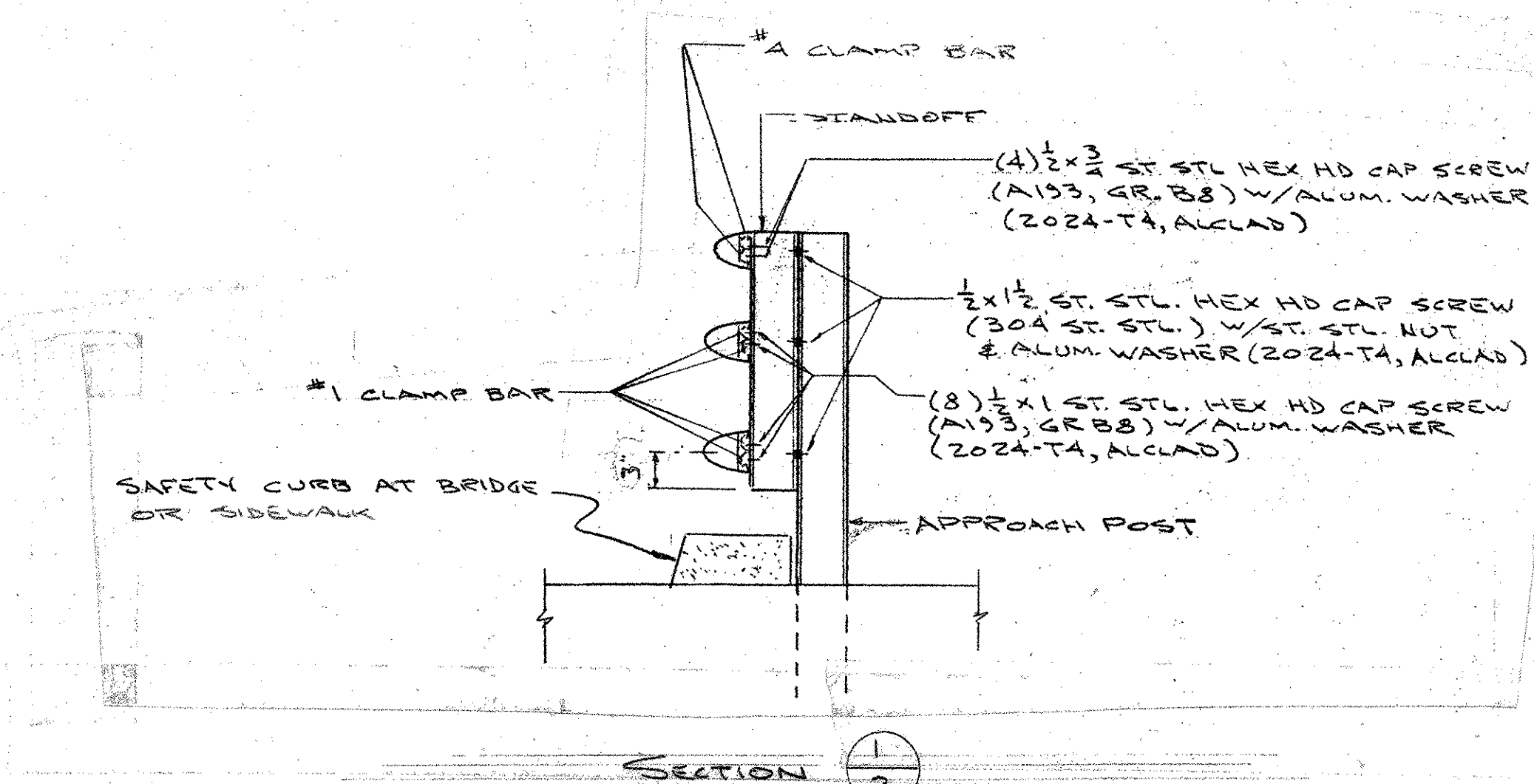
	NE SIDE	SE SIDE	SW SIDE
1'	1/4"	3/8"	1/2"
2'	3/8"	3/4"	1"



NE ALUMINUM RAIL DIMENSIONS							SE ALUMINUM RAIL DIMENSIONS							SW ALUMINUM RAIL DIMENSIONS						
POST NO.	RAIL HEIGHT DIMENSIONS			OFFSET BLOCK DIMENSIONS			POST NO.	RAIL HEIGHT DIMENSIONS			OFFSET BLOCK DIMENSIONS			POST NO.	RAIL HEIGHT DIMENSIONS			OFFSET BLOCK DIMENSIONS		
A	B	C	D	E	F	G	A	B	C	D	E	F	G	A	B	C	D	E	F	G
1.1	3'-4"	2'-5 1/2"	1'-4 1/2"	8 1/2"	1'-0 1/2"	2'-4 1/2"	2.1	3'-4 1/2"	2'-5 1/2"	1'-4 1/2"	8 1/2"	1'-0 1/2"	2'-4 1/2"	3.1	4'-0 1/2"	3'-1 1/2"	1'-8 1/2"	8 1/2"	1'-5 1/2"	2'-9 1/2"
1.2	3'-0 1/2"	2'-3 1/2"	1'-3 1/2"	9 1/2"	1'-1 1/2"	2'-2 1/2"	2.2	3'-3 1/2"	2'-5 1/2"	1'-5 1/2"	9 1/2"	1'-1 1/2"	2'-2 1/2"	3.2	3'-5 1/2"	2'-10 1/2"	1'-7 1/2"	8 1/2"	1'-2 1/2"	2'-3 1/2"
1.3	2'-9 1/2"	2'-2 1/2"	1'-2 1/2"	8 1/2"	1'-8 1/2"	1'-8 1/2"	2.3	3'-1 1/2"	2'-5 1/2"	1'-6 1/2"	8 1/2"	1'-1 1/2"	1'-8 1/2"	3.3	3'-2 1/2"	2'-10 1/2"	1'-7 1/2"	8 1/2"	1'-2 1/2"	2'-3 1/2"
1.4	2'-9 1/2"	2'-3 1/2"	1'-4 1/2"	6 1/2"	1'-9 1/2"	1'-2 1/2"	2.4	2'-11 1/2"	2'-5 1/2"	1'-7 1/2"	6 1/2"	1'-9 1/2"	1'-2 1/2"	3.4	3'-2 1/2"	2'-8 1/2"	1'-7 1/2"	6 1/2"	1'-4 1/2"	2'-0 1/2"
1.5	2'-5 1/2"	2'-7 1/2"	1'-7 1/2"	9 1/2"	1'-2 1/2"	1'-2 1/2"	2.5	2'-5 1/2"	1'-7 1/2"	1'-7 1/2"	9 1/2"	1'-2 1/2"	1'-2 1/2"	3.5	2'-5 1/2"	1'-7 1/2"	1'-7 1/2"	9 1/2"	1'-4 1/2"	1'-4 1/2"
1.6	2'-4 1/2"	1'-7 1/2"	1'-7 1/2"	8 1/2"	1'-3 1/2"	1'-3 1/2"	2.6	2'-4 1/2"	1'-7 1/2"	1'-7 1/2"	8 1/2"	1'-3 1/2"	1'-3 1/2"	3.6	2'-5 1/2"	1'-7 1/2"	1'-7 1/2"	9 1/2"	1'-2 1/2"	1'-2 1/2"
1.7	2'-3 1/2"	1'-7 1/2"	1'-7 1/2"	7 1/2"	1'-0 1/2"	1'-0 1/2"	2.7	2'-3 1/2"	1'-7 1/2"	1'-7 1/2"	7 1/2"	1'-0 1/2"	1'-0 1/2"	3.7	2'-3 1/2"	1'-7 1/2"	1'-7 1/2"	8 1/2"	1'-0 1/2"	1'-0 1/2"

ALL REMAINING POSTS TO HAVE THE SAME DIMENSIONS AS POST NO. 7

TYP. DETAILS AT APPROACH RAILING
SE CORNER AS SHOWN
NE & SW CORNERS OPP. HAND



SHOP DRAWINGS ARE REVIEWED UNLESS NOTED OTHERWISE
NO EXCEPTION TAKEN
REVISE AS NOTED
RESUBMISSION NOT REQUIRED
REVISE AS NOTED
RESUBMISSION REQUIRED
REJECTED

DATE: 3/26/07
SIGNATURE: Michael Donetti

REVIEWED BY STANTEC IS FOR THE SOLE PURPOSE OF ASCERTAINING GENERAL CONFORMITY WITH DESIGN. CONTRACTOR IS RESPONSIBLE FOR DIMENSIONS, FABRICATION AND CONSTRUCTION METHODS. COORDINATION OF SUB TRADE DETAIL DESIGN OF COMPONENTS AND ERRORS OR OMISSIONS ON SHOP DRAWINGS.

RECEIVED
CR'D BY: [Signature]
DATE: FEB 28 2007
RESUBMIT BY: [Signature]
APPROVED DATE: [Signature]

AUCIELLO IRON WORKS INC
560 MAIN ST. HUDSON, MA (978) 568-8382

VT. AGENCY OF TRANSPORTATION
HUNTINGTON PROJ. BRO 1445 (29)
BRIDGE # 42
EAST ST. OVER HUNTINGTON RIVER

AL APPROACH RAILING

SURFACE PREP: NONE	FINISH: MILL FINISH
FOR: A.D. ROSSI CORP.	DR: W.M. 2-16-07
CHK'D: 2-18-07	DWG. NO. BR-2398
JOB NO. AB70002-1001	SHEET 3 OF 3