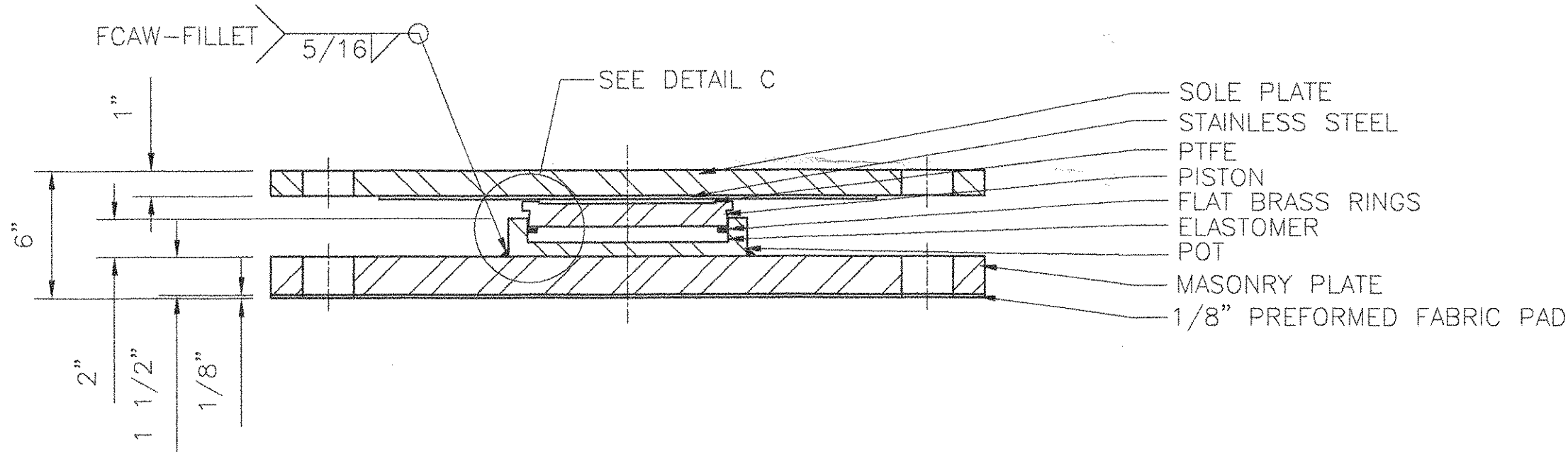


PLAN



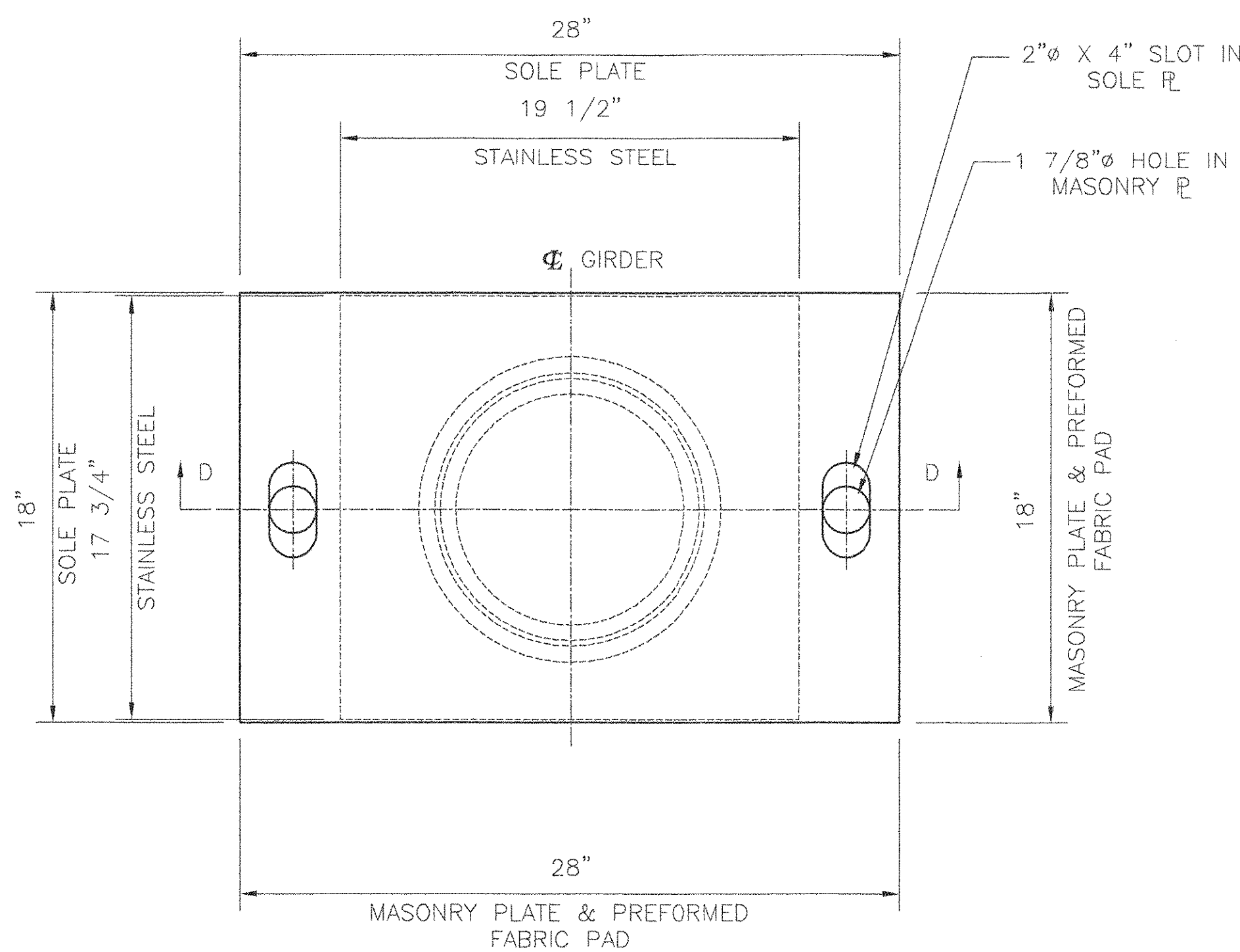
SECTION C - C

**COSMEC NON-GUIDED EXPANSION POT BEARING**

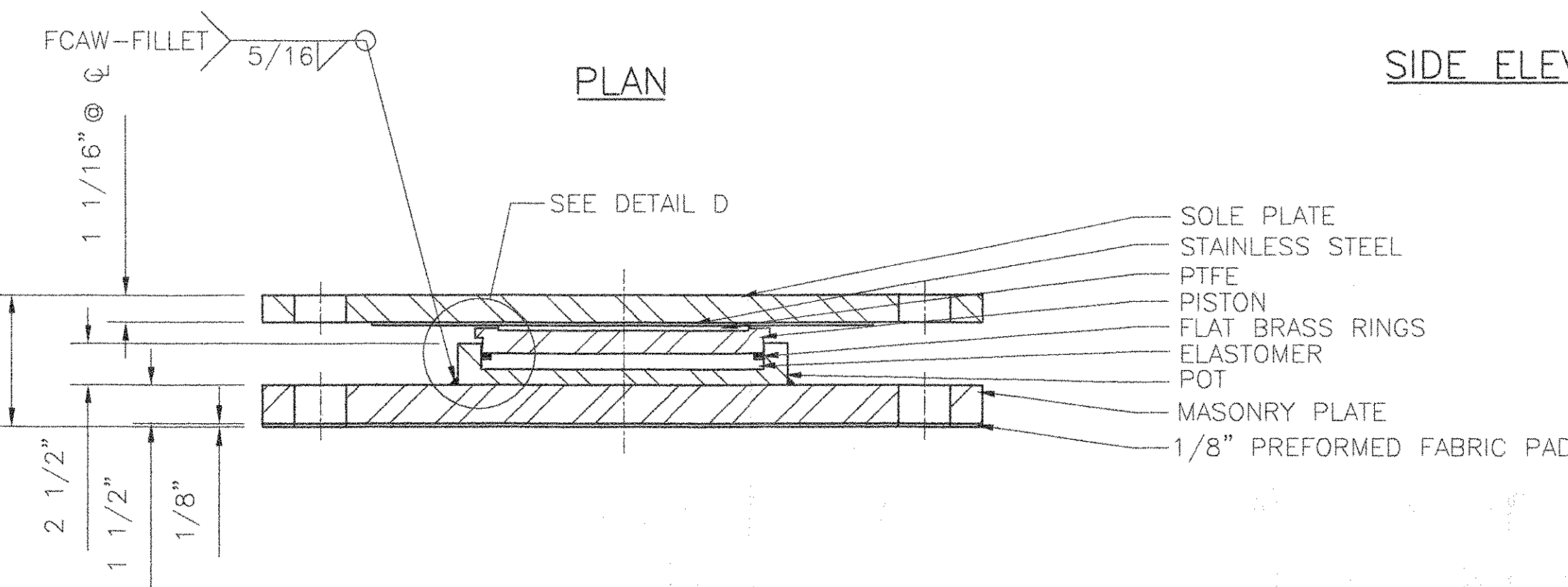
QUANTITY: 2  
 LOCATION: ABUTMENT 1, GIRDERS 1 & 4  
 VERTICAL LOAD CAPACITY: 170 KIPS  
 TRANSVERSE LOAD CAPACITY: N/A  
 LONGITUDINAL LOAD CAPACITY: N/A  
 MOVEMENT CAPACITY: 2 1/2"  
 ROTATION CAPACITY: .020 RADANS

**BEARING NOTES**

1. ALL MATERIALS USED IN THE FABRICATION OF THESE BEARINGS SHALL BE MADE IN THE U.S.A.
2. BEARINGS ARE TO BE SHIPPED AS COMPLETE UNITS, STEEL BANDED, AND SHALL BE WRAPPED TO PROTECT FROM MOISTURE AND DIRT DURING TRANSIT AND STORAGE.
3. LOCATION OF FABRICATION PLANT - 70 SOUTH STREET WALPOLE, MA 02081
4. COSMEC, INC. REPRESENTATIVE - MR. MATT McANDREWS (508) 668-6600
5. BEARINGS SHALL BE STORED IN A CLEAN, DRY, LEVEL UPRIGHT POSITION.
6. BEARINGS MUST NOT BE DISASSEMBLED
7. PROTECT PTFE & S.S. SURFACES FROM DIRT, WELD SPATTER, & ANY OTHER FOREIGN SUBSTANCES.



PLAN



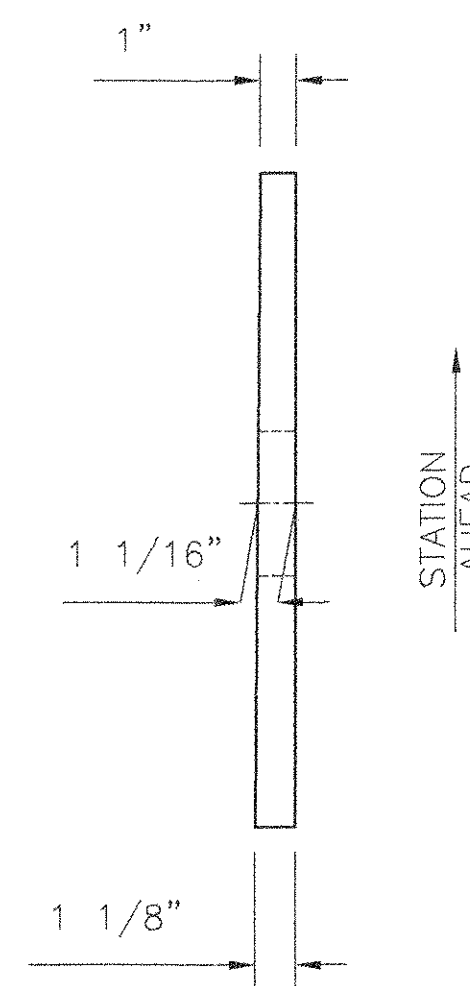
SECTION D - D

**COSMEC NON-GUIDED EXPANSION POT BEARING**

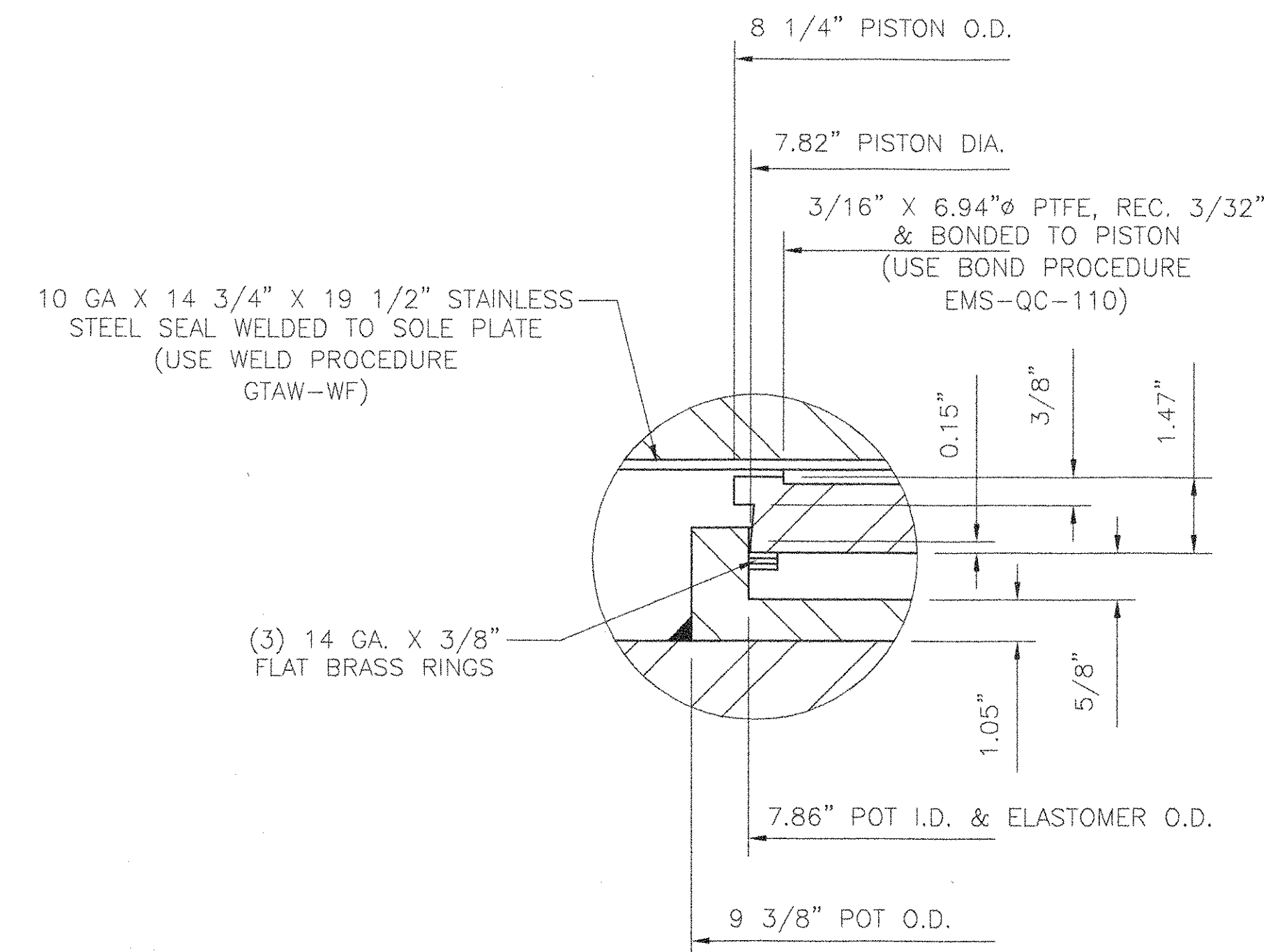
QUANTITY: 2  
 LOCATION: PIER, GIRDERS 1 & 4  
 VERTICAL LOAD CAPACITY: 335 KIPS  
 TRANSVERSE LOAD CAPACITY: N/A  
 LONGITUDINAL LOAD CAPACITY: N/A  
 MOVEMENT CAPACITY: 1 1/2"  
 ROTATION CAPACITY: .015 RADANS

**MATERIALS**

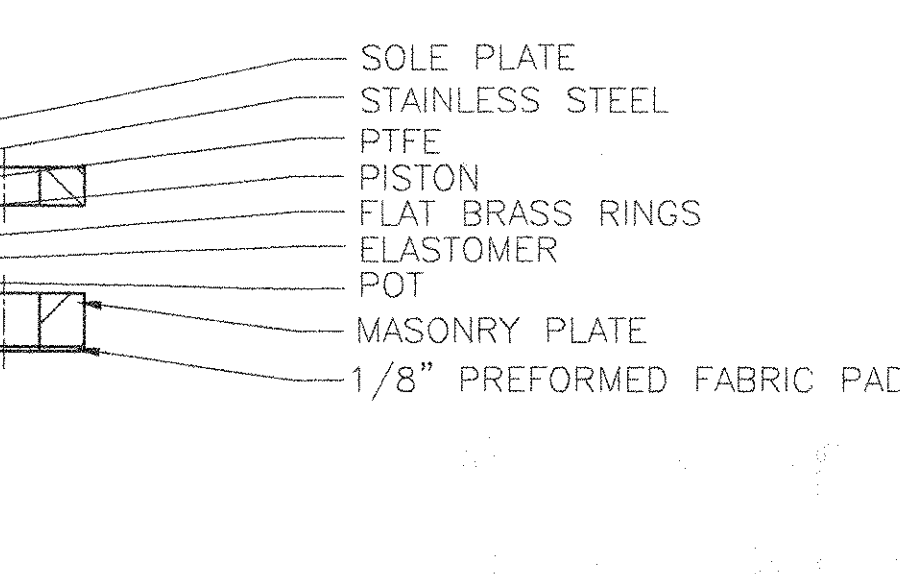
STEEL - ASTM A709 GRADE 36, ZINC METALLIZED  
 STAINLESS STEEL - ASTM A240 TYPE 304, WITH 20 RMS FINISH OR LESS  
 PREFORMED FABRIC PAD - AASHTO DIV. II SPEC. 18.4.9.1  
 ANCHOR BOLTS - SEE ANCHOR BOLT DETAIL  
 PTFE - ASTM D.4894 VIRGIN UNFILLED  
 ELASTOMER - AASHTO SHORE A DUROMETER 50 ± 5 DUROMETER  
 BRASS SEALING RINGS - ASTM B.36 HALF HARD



SIDE ELEVATION



DETAIL C  
N.T.S.



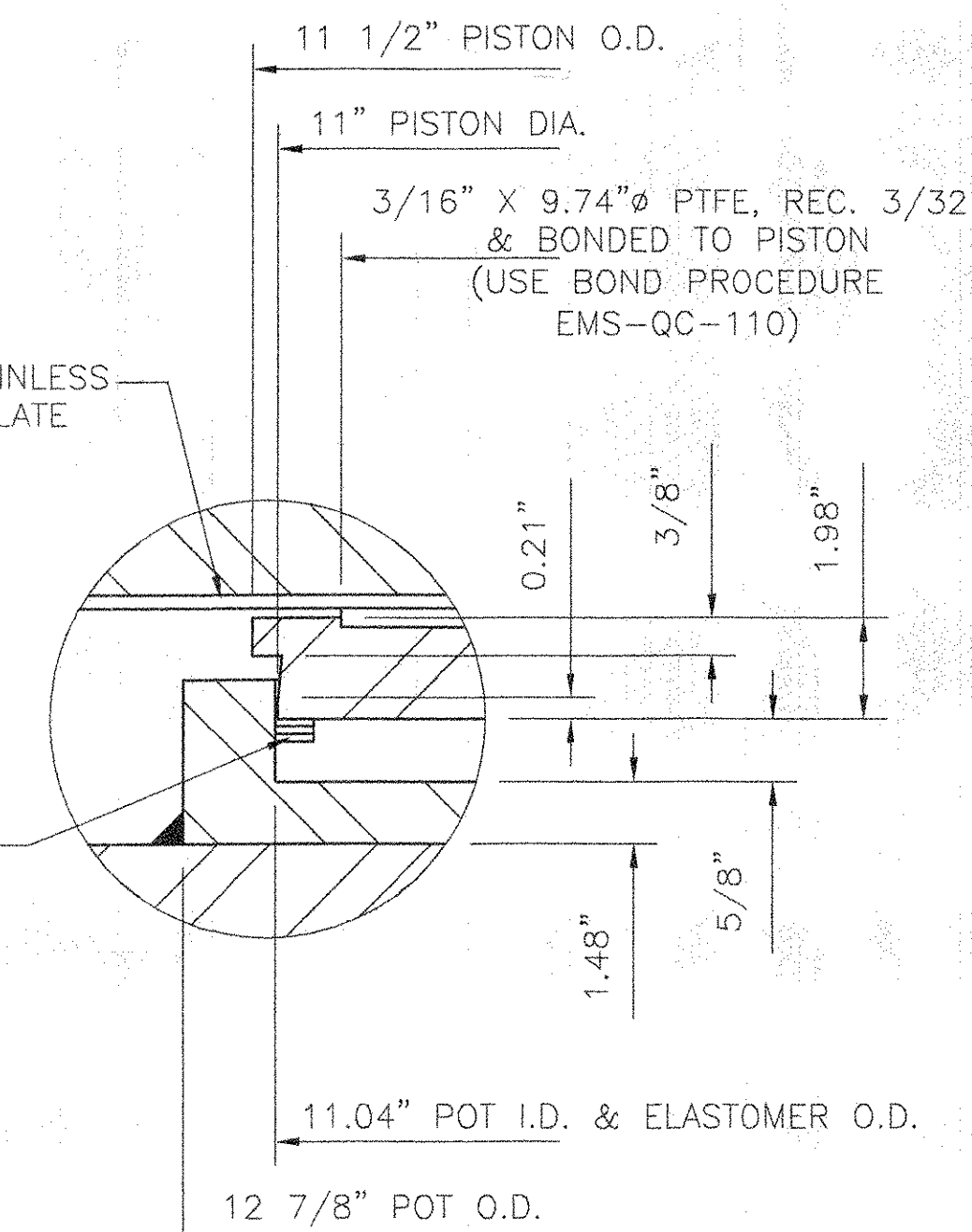
SECTION D - D

**COSMEC NON-GUIDED EXPANSION POT BEARING**

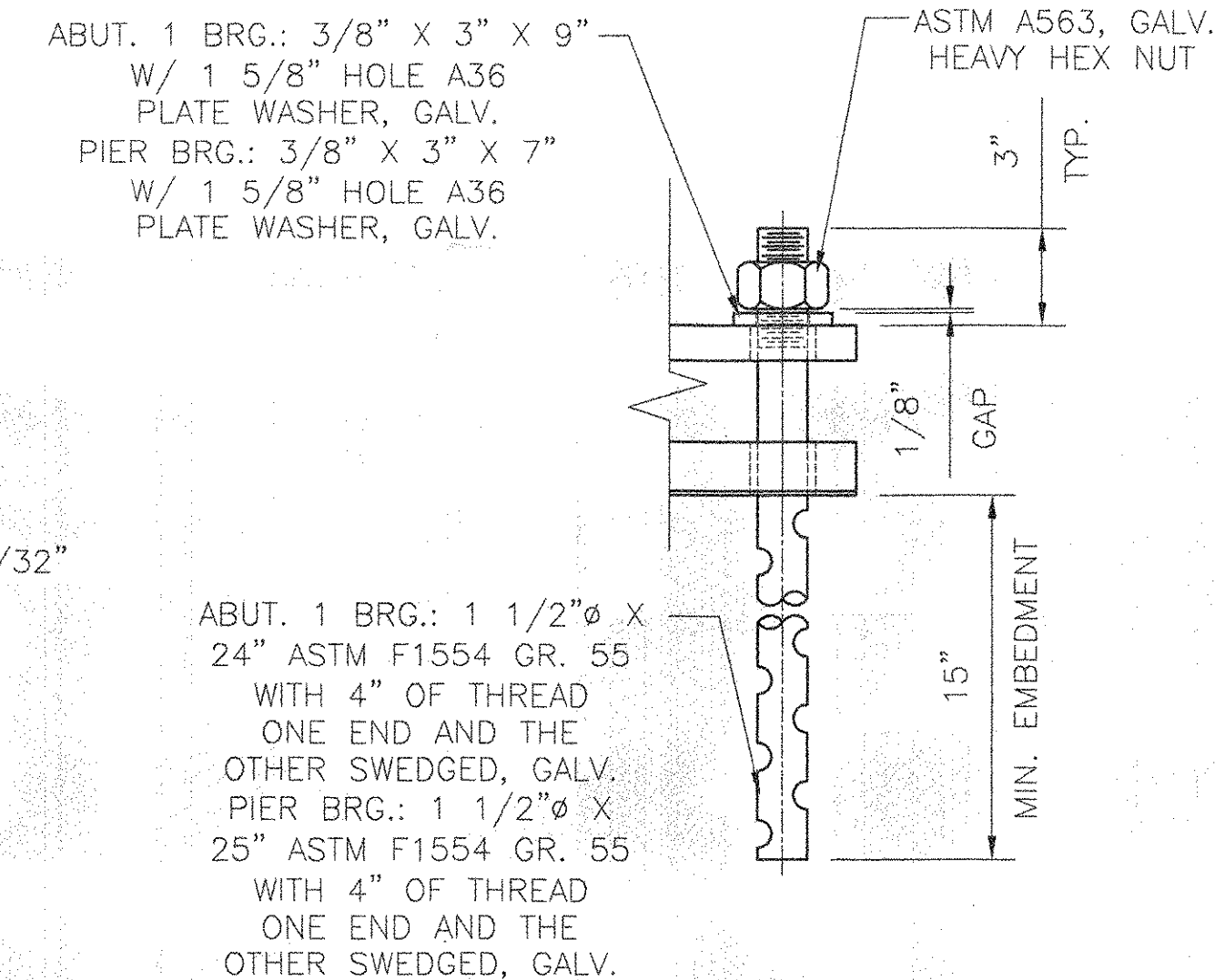
QUANTITY: 2  
 LOCATION: PIER, GIRDERS 1 & 4  
 VERTICAL LOAD CAPACITY: 335 KIPS  
 TRANSVERSE LOAD CAPACITY: N/A  
 LONGITUDINAL LOAD CAPACITY: N/A  
 MOVEMENT CAPACITY: 1 1/2"  
 ROTATION CAPACITY: .015 RADANS

**MATERIALS**

STEEL - ASTM A709 GRADE 36, ZINC METALLIZED  
 STAINLESS STEEL - ASTM A240 TYPE 304, WITH 20 RMS FINISH OR LESS  
 PREFORMED FABRIC PAD - AASHTO DIV. II SPEC. 18.4.9.1  
 ANCHOR BOLTS - SEE ANCHOR BOLT DETAIL  
 PTFE - ASTM D.4894 VIRGIN UNFILLED  
 ELASTOMER - AASHTO SHORE A DUROMETER 50 ± 5 DUROMETER  
 BRASS SEALING RINGS - ASTM B.36 HALF HARD



DETAIL D  
N.T.S.



ANCHOR BOLT DETAIL

VERMONT  
 AGENCY OF TRANSPORTATION  
 HUNTINGTON  
 PROJECT BRO 1445(29)  
 EAST STREET (T.H.#4) OVER  
 HUNTINGTON RIVER  
 BRIDGE NO. 42

<b>COSMEC, INC.</b>		70 SOUTH STREET WALPOLE, MA 02081	
SCALE: 3/16"=1"	DRAWN BY: MRR	CHECKED BY: MCM	
DATE: 11/16/06	DATE: 11/16/06	DATE: 12/8/06	
<b>COSMEC POT BEARINGS</b>			
CUSTOMER PARENT CONSTRUCTION INC.	S.O. NUMBER 60630	DRAWING NUMBER 5058	REV.

RECEIVED  
 CK'D BY: [Signature]  
 DEC 14 2006  
 RESUBMIT APPROVED: [Signature]  
 BY: [Signature] DATE: 12/27/06

REV.	BY	DATE	CK'D	DATE