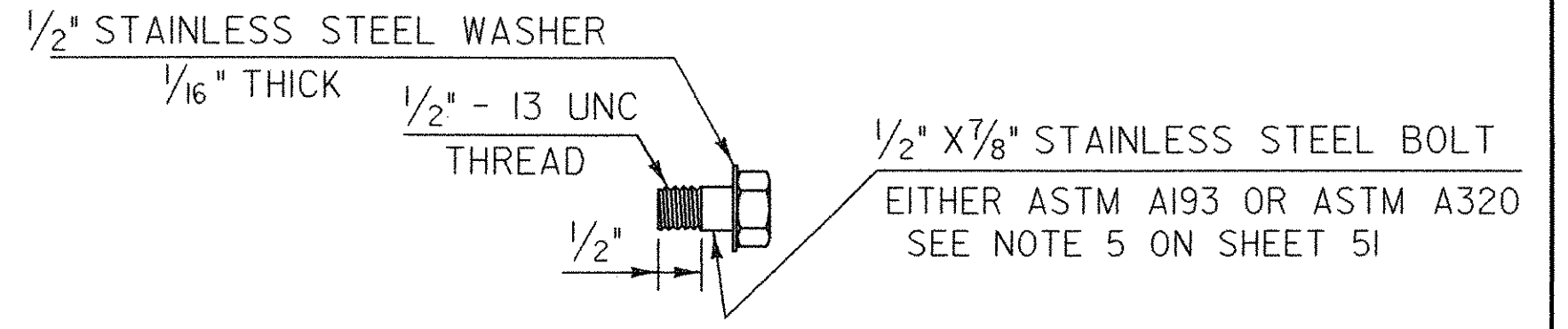
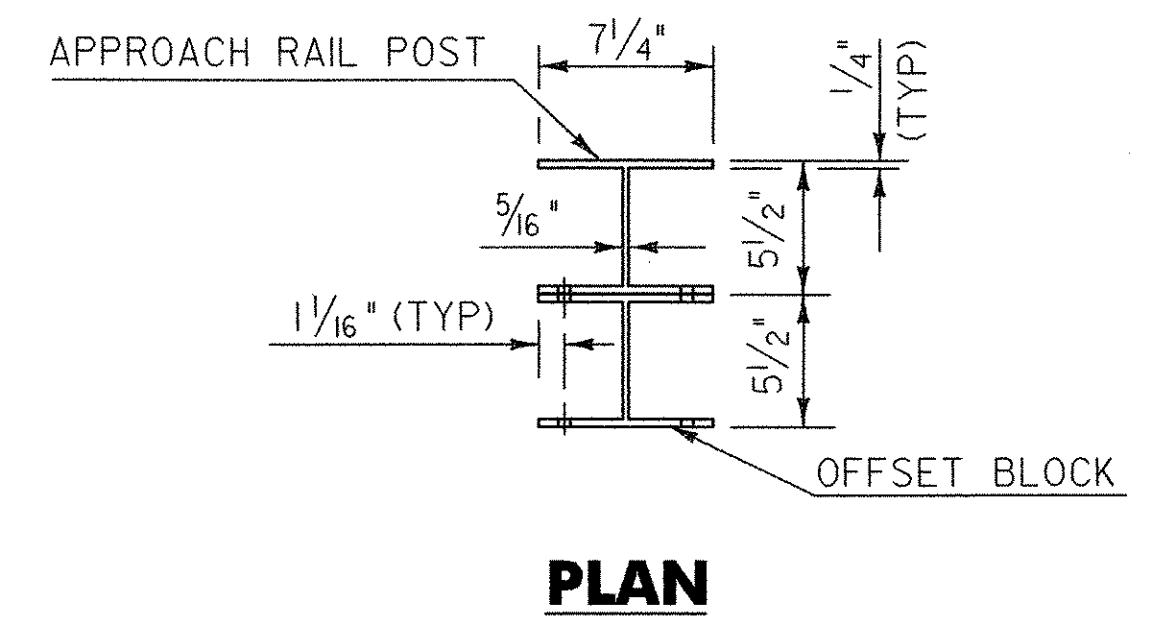
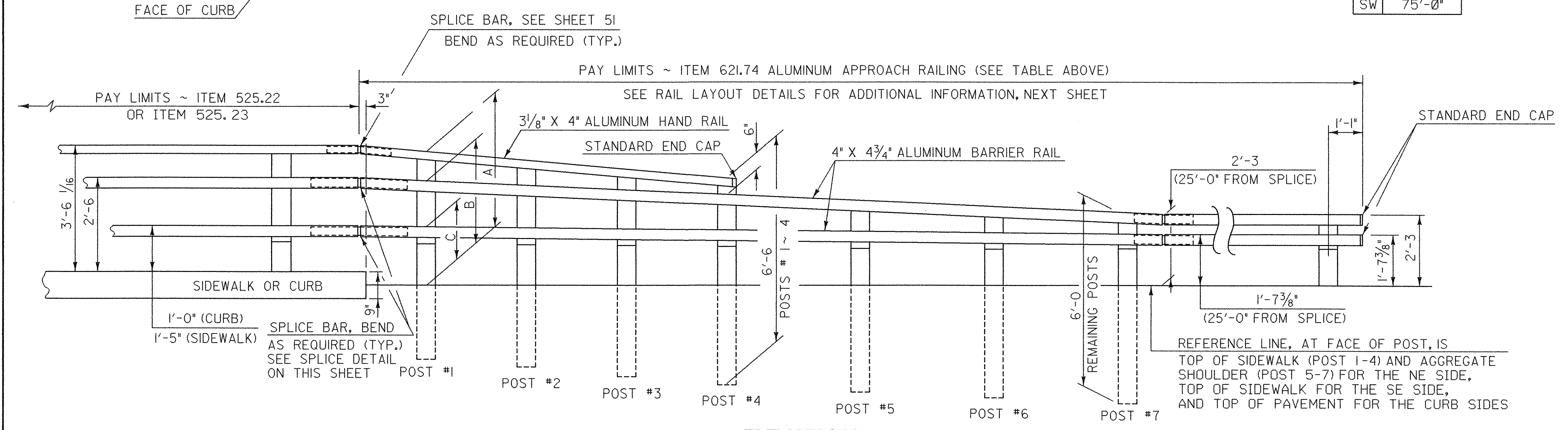


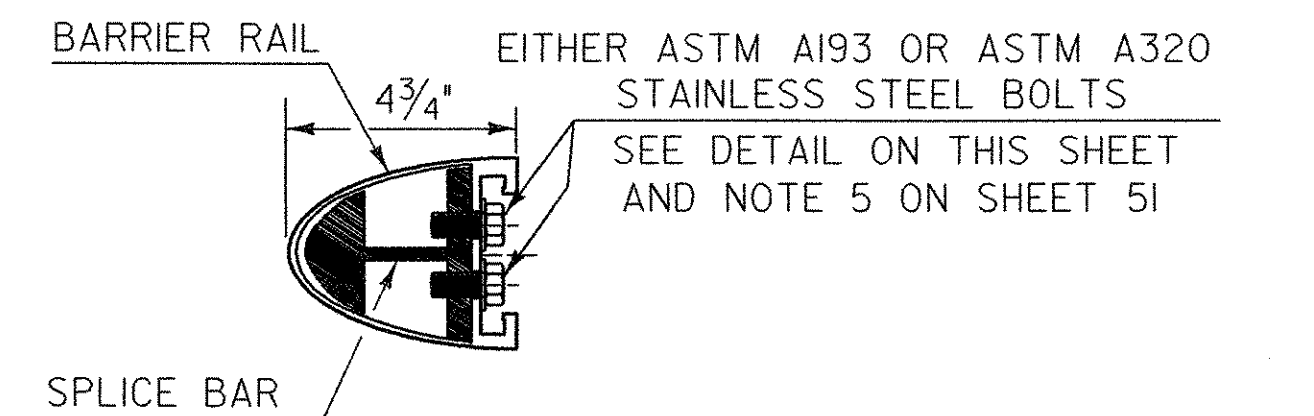
- NOTES**
1. ALL POSTS SHALL BE EXTRUDED ALUMINUM.
 2. ALL STRUCTURAL STEEL SHALL BE AASHTO M270 GRADE 36 GALVANIZED AFTER FABRICATION.
 3. ALL ITEMS NOT OTHERWISE INDICATED SHALL MEET THE SPECIFICATION REQUIREMENTS OF THE STANDARD SHEETS ON WHICH THEY ARE DETAILED.
 4. SEE SHEETS 50 AND 51 FOR ALUMINUM BRIDGE RAILING DETAILS.
 5. THE COST OF ALL MATERIALS AND LABOR FOR THE SPLICE BETWEEN THE ALUMINUM APPROACH RAILING AND THE STEEL BEAM GUARD RAIL SHALL BE INCIDENTAL TO ITEM 621.74, ALUMINUM APPROACH RAILING.
 6. DETAILS ARE SHOWN FOR TRANSITION TO A 3 RAIL ALUMINUM BRIDGE RAILING.
 7. DIMENSIONS SHOWN ARE FROM A REFERENCE LINE AT THE FACE OF POST FOR A NORMAL CROWNED SECTION. APPROPRIATE CORRECTIONS SHALL BE MADE FOR CROSS SLOPES OTHER THAN A NORMAL SECTION.

PAY LIMITS - ITEM 621.74 ALUMINUM APPROACH RAILING

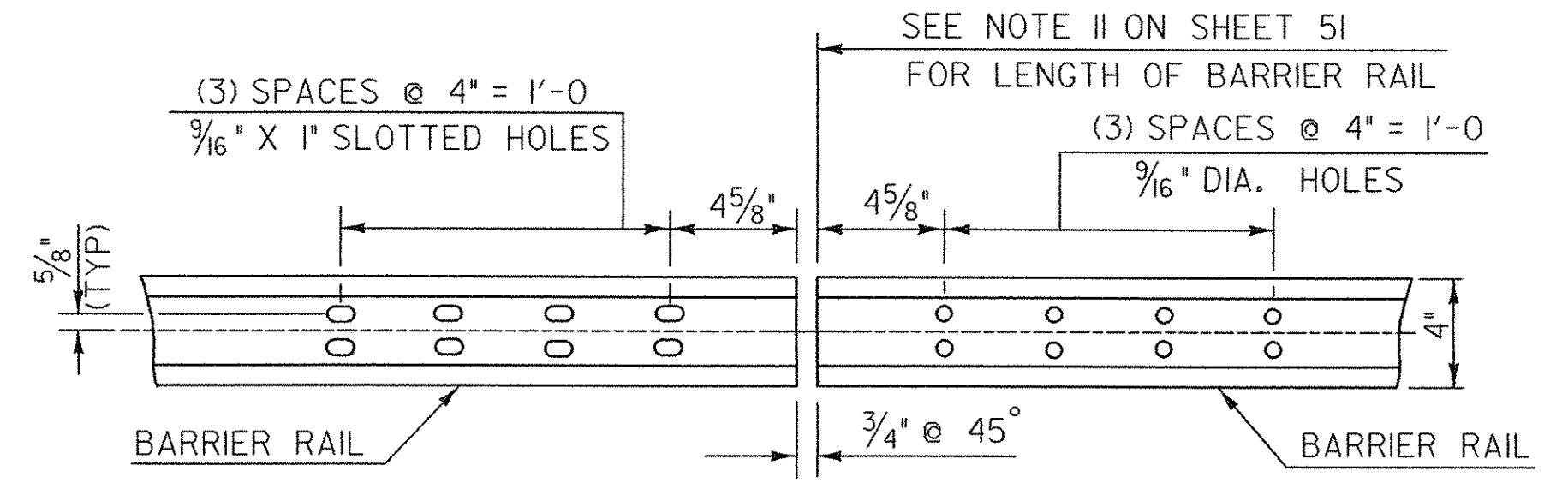
| | |
|----|---------|
| NE | 106'-3" |
| SE | 87'-6" |
| NW | 12'-6" |
| SW | 75'-0" |



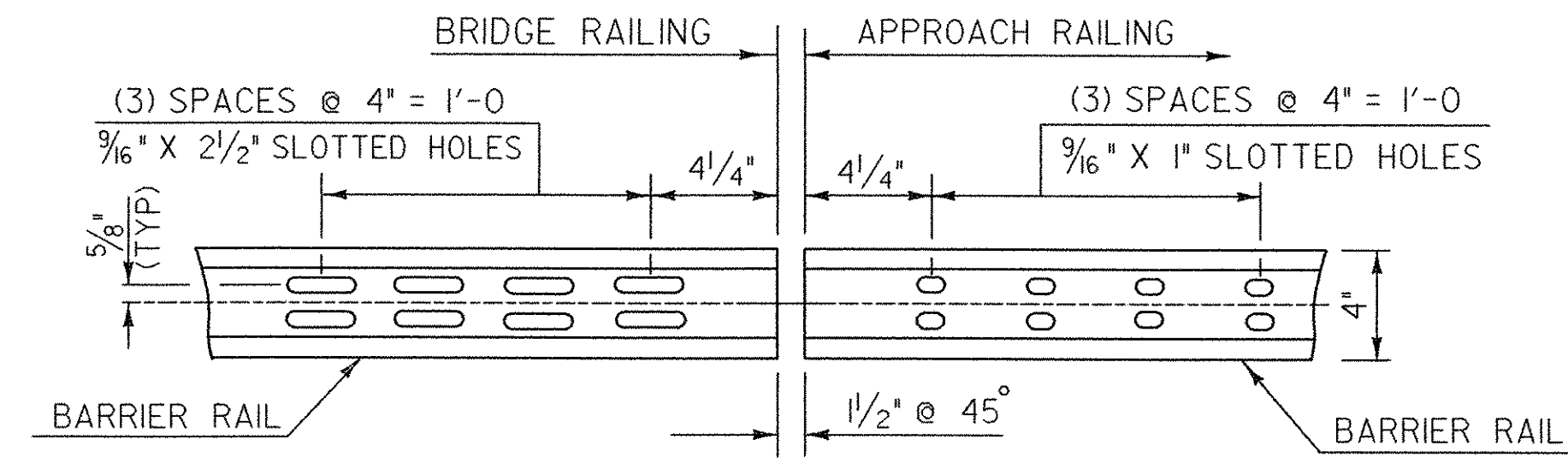
STAINLESS STEEL BOLT DETAILS



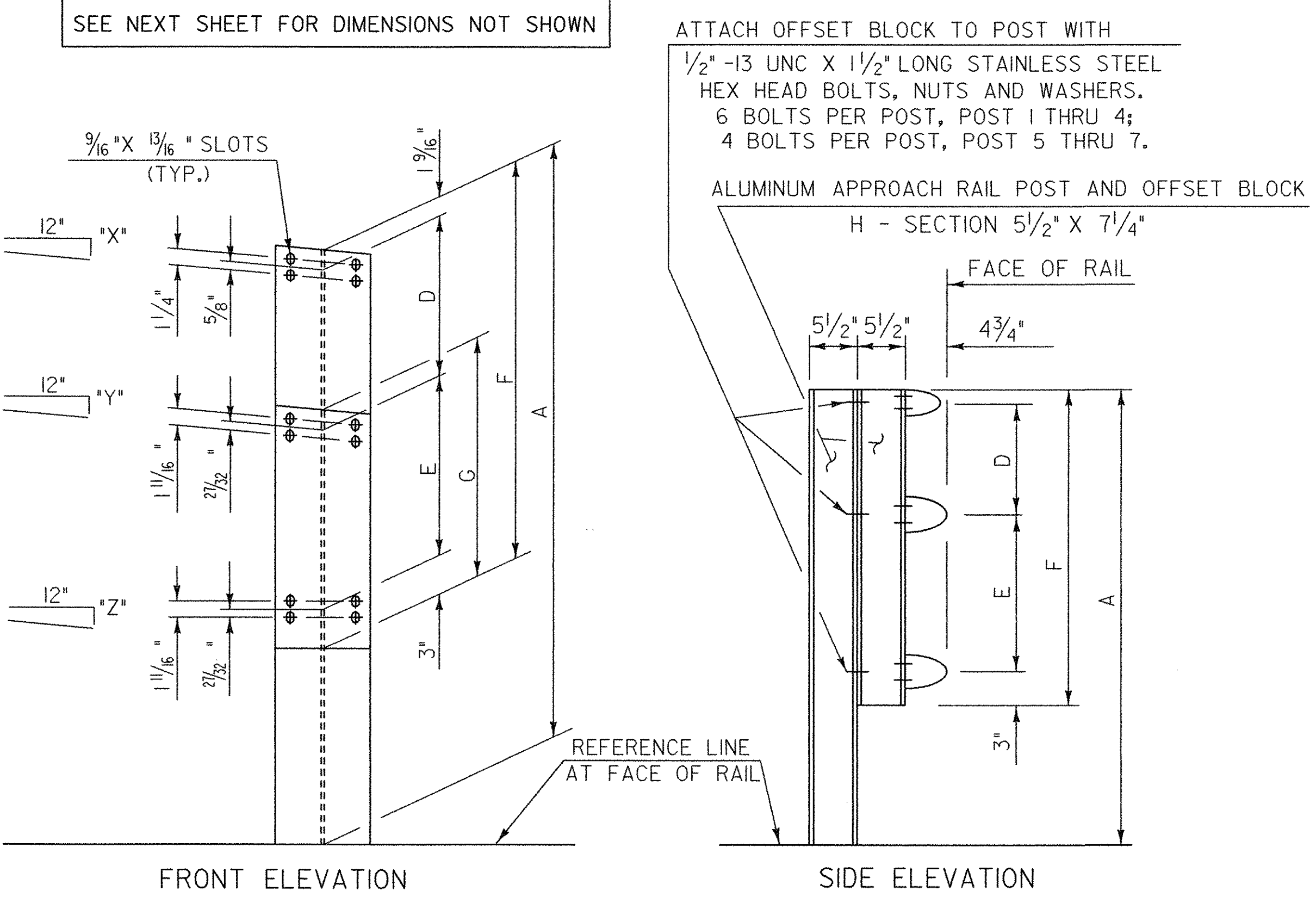
TYPICAL SECTION THROUGH BARRIER RAIL SPLICE



ELEVATION OF BARRIER RAIL (FROM BACK) AT ALL INTERMEDIATE RAIL SPLICES



ELEVATION OF BARRIER RAIL (FROM BACK)



APPROACH RAIL DETAILS

STATE OF VERMONT AGENCY OF TRANSPORTATION

| | | | |
|---|----------------------|--------------------------|----------------|
| Town Of | HUNTINGTON | Bridge No. | 42 |
| Highway No. | T.H. 4 | Log Sta. | |
| | | Surv. Sta. | |
| EAST STREET (T.H. #4) OVER HUNTINGTON RIVER | | | |
| ALUMINUM APPROACH RAILING DETAILS | | | |
| Designed By | VTrans/D-H | Drawn By | VTrans/D-H |
| Checked By | Date | Bridge Design Supervisor | Date |
| M. CHENETTE | 08/05 | M. CHENETTE | 09/05 |
| PROJECT | HUNTINGTON | PROJECT NO. | BRO 1445 (29) |
| DH Dgn. ... \Cadd\Trans\201302airrail.dgn | Plot Date: 1/12/2006 | Bridge Sheet No. | Sheet 52 of 63 |