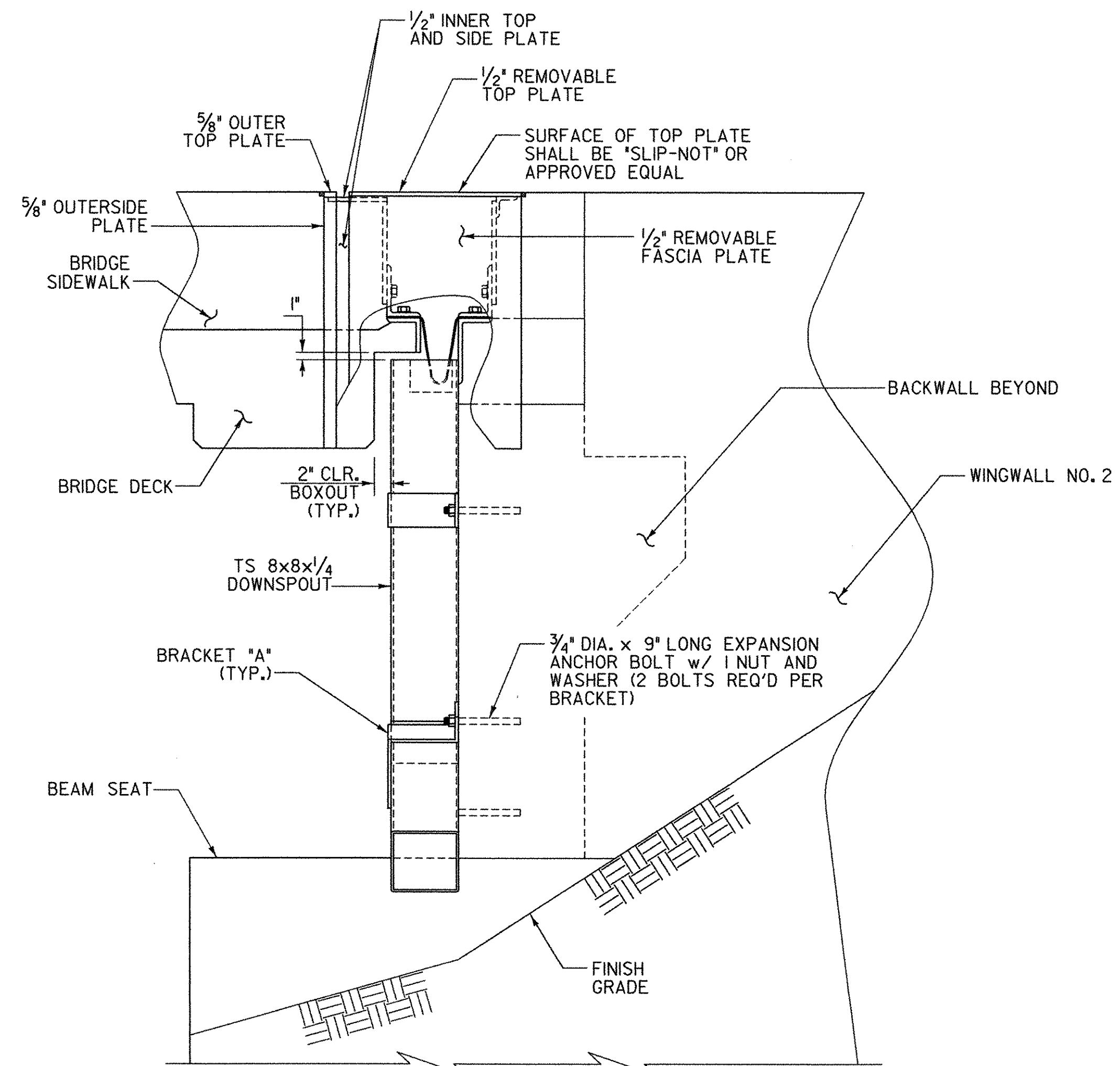
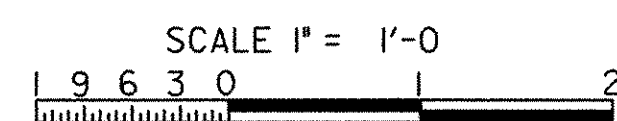


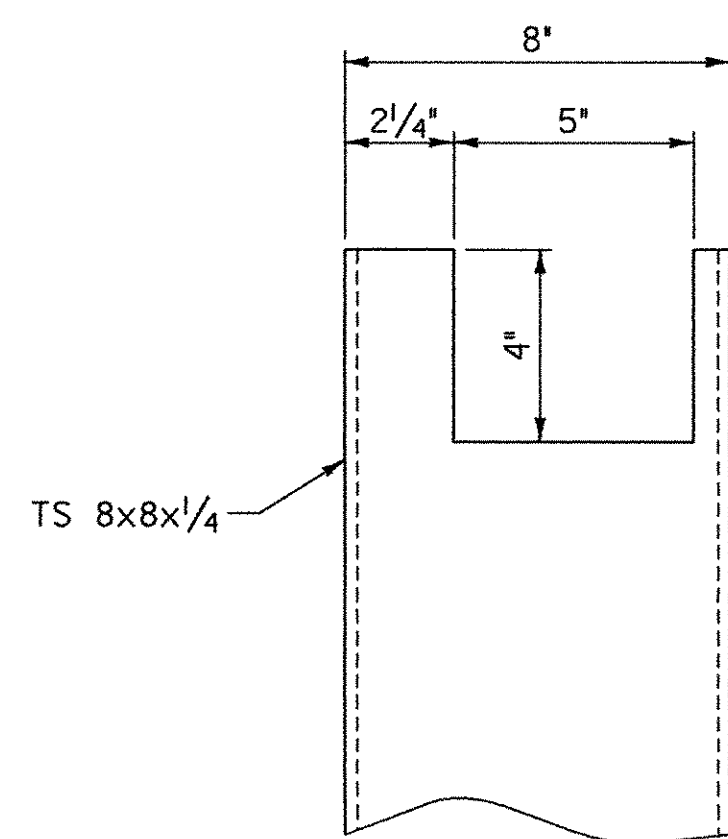
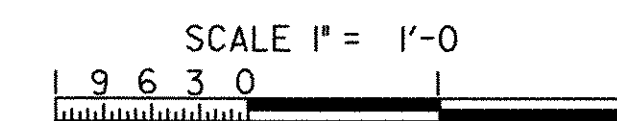
SEE EXPANSION JOINT PLAN FOR INFORMATION NOT SHOWN

DOWNSPOUT FRONT ELEVATION

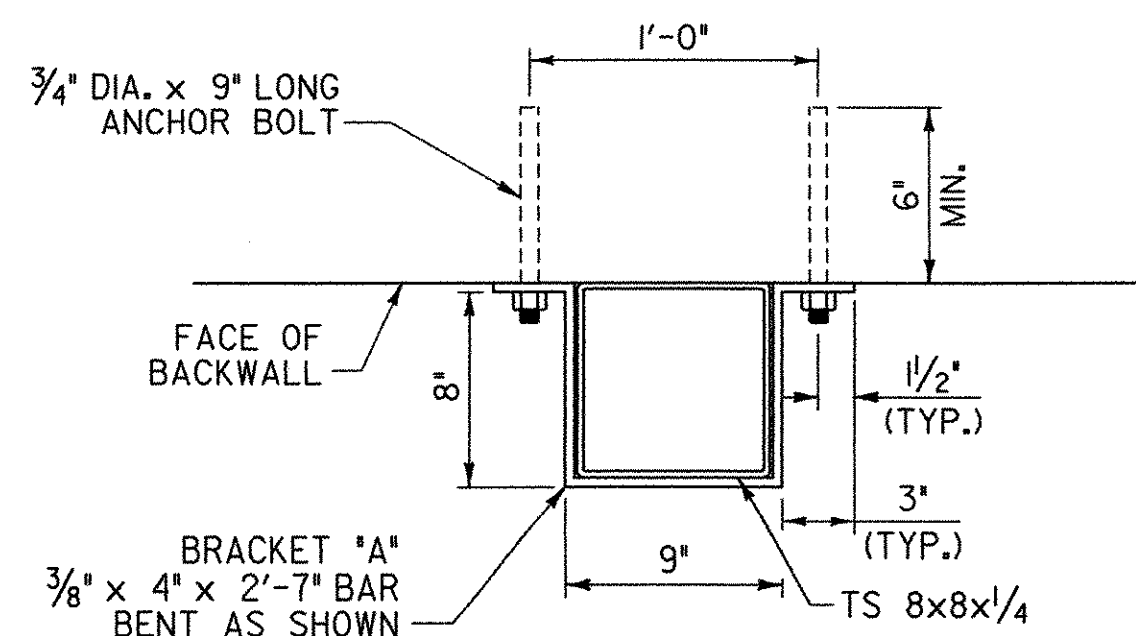
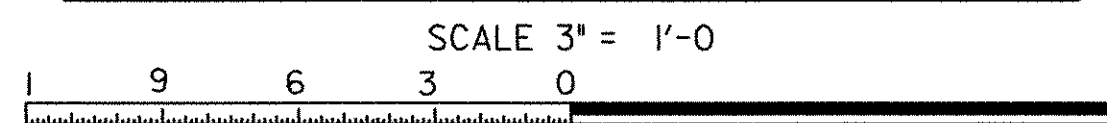


SEE EXPANSION JOINT PLAN FOR INFORMATION NOT SHOWN

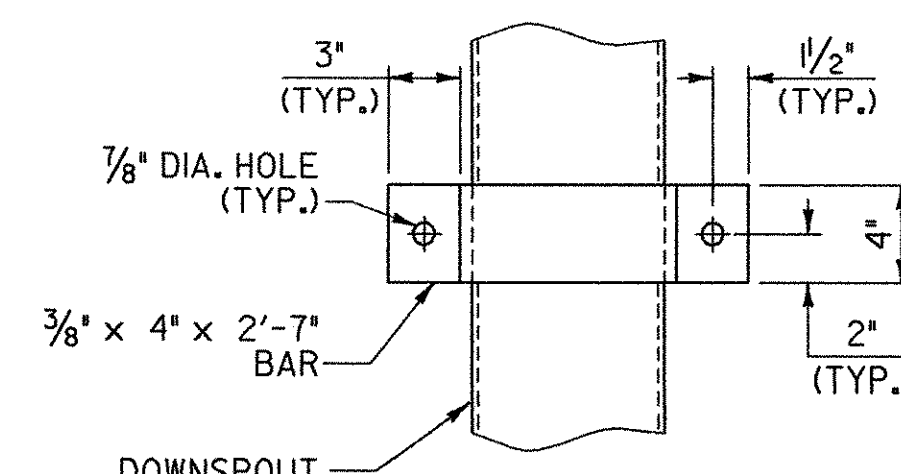
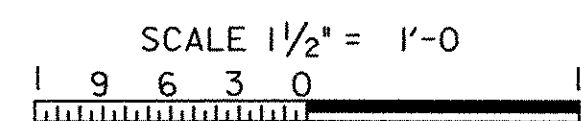
DOWNSPOUT SIDE ELEVATION



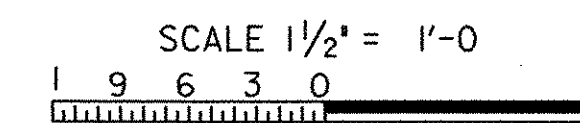
DOWNSPOUT CUTOUT FOR TROUGH



DETAIL FOR ATTACHING DOWNSPOUT TO BACKWALL



ELEVATION VIEW OF BRACKET A



DOWNSPOUT NOTES

- HOLLOW STRUCTURAL STEEL TUBING SHALL CONFORM TO ASTM A500 OR A501.
- ALL PLATES, BARS, AND ANGLES SHALL CONFORM TO AASHTO M270 GRADE 36.
- DOWNSPOUTS SHALL BE GALVANIZED IN ACCORDANCE WITH ASTM A-123 AFTER FABRICATION.
- ALL BOLTS AND RELATED HARDWARE SHALL BE ASTM A307 AND SHALL BE GALVANIZED IN ACCORDANCE WITH ASTM A513 (AASHTO M232).
- IN AREAS WHERE THE GALVANIZING HAS BEEN REMOVED FROM THE DOWNSPOUT EITHER BY CUTTING, BURNING, WELDING, PLACING, OR ANY OTHER MEANS, IT SHALL BE REPAIRED BY THOROUGHLY CLEANING THE DAMAGED AREAS WITH A WIRE BRUSH AND PAINTING THE DAMAGED AREAS WITH TWO COATS OF AN APPROVED SEALANT.
- ALL MATERIALS AND INSTALLATION COSTS FOR THE DOWNSPOUT, INCLUDING STEEL TUBING, RELATED HARDWARE, AND ANCHOR BOLTS SHALL BE PAID FOR UNDER ITEM 506.55 "STRUCTURAL STEEL (PLATE GIRDER)".

STATE OF VERMONT AGENCY OF TRANSPORTATION

Town Of	HUNTINGTON	Bridge No.	42
Highway No.	T.H. 4	Log Sta.	
		Surv. Sta.	
EAST STREET (T.H. #4) OVER HUNTINGTON RIVER			
DOWNSPOUT DETAILS			
Designed By	S. BURBANK	Drawn By	J. SOTER
Checked By	Date	Bridge Design Supervisor	Date
M. CHENETTE	08/05	M. CHENETTE	09/05
PROJECT	HUNTINGTON	PROJECT NO.	BRO 1445 (29)
DH Dgn.: ...Cadd\Trans\z01302ds.dgn		Plot Date:	1/12/2006
Bridge Sheet No.		Sheet	40 of 63