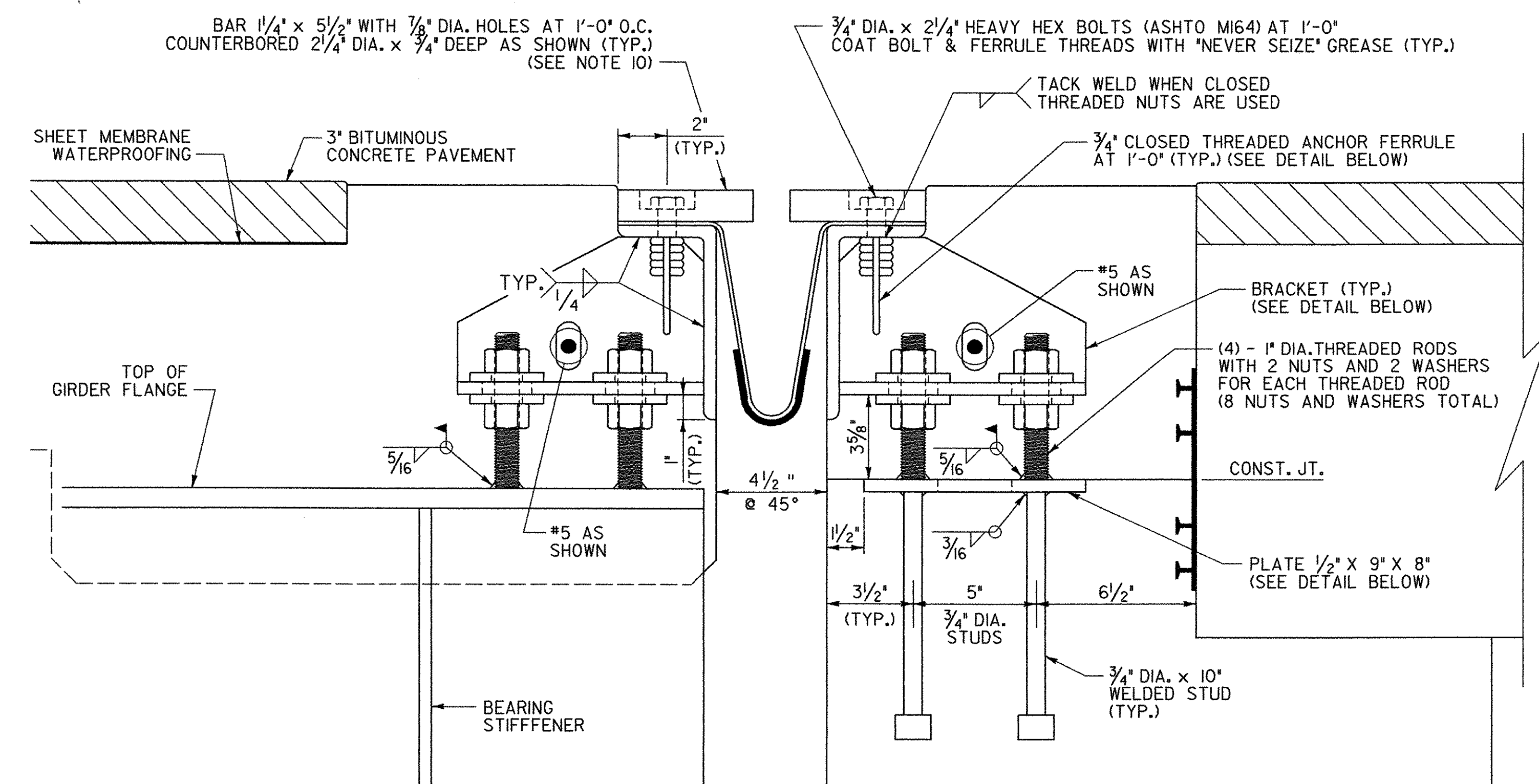
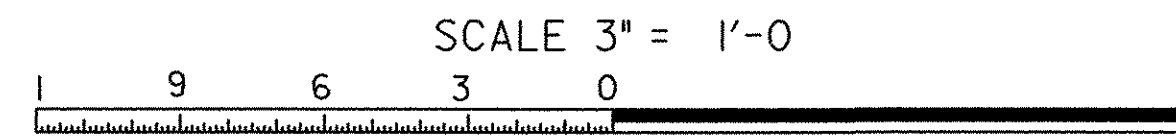


TYPICAL SECTION BETWEEN GIRDERS

(NORMAL TO \odot BEARING)



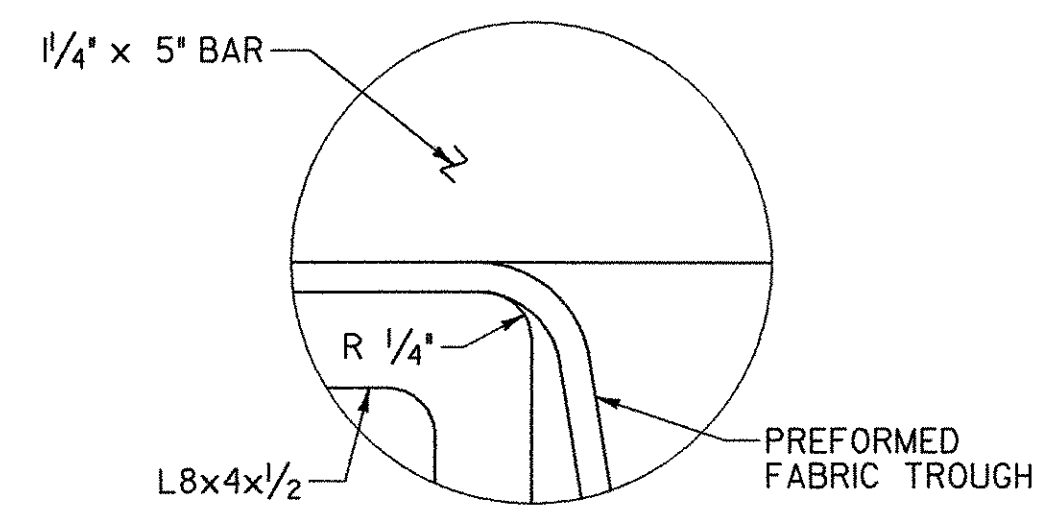
TYPICAL SECTION AT GIRDERS

(NORMAL TO \odot BEARING)

SCALE 3" = 1'-0"



1. DETAILS ON THIS SHEET AND THE EXPANSION JOINT PLAN SHEET ARE FOR ITEM 516.10 "BRIDGE EXPANSION JOINT (VERMONT)".
2. PREFORMED FABRIC MATERIAL SHALL BE CONTINUOUS AND SHALL CONFORM TO SUBSECTION 707.07 OF STANDARD SPECIFICATIONS.
3. BUTYL RUBBER TAPE SHALL CONFORM TO AASHTO SPECIFICATION M-198, TYPE II.
4. THE FINAL FINISH OF THE EXPANSION DEVICE SHALL BE COVERED DURING THE PLACING OF BRIDGE DECK CONCRETE.
5. ALL STEEL COMPONENTS SHALL BE AASHTO M270 GRADE 36 GALVANIZED OR METALIZED AS PER SUBSECTION 506.15(a) OR (b) OF THE STANDARD SPECIFICATIONS UNLESS OTHERWISE SPECIFIED. THREADED RODS SHALL CONFORM TO ASTM A307, GRADE C. THE NUTS FOR THE THREADED RODS SHALL BE ASTM A563.
6. THE ITEM "BRIDGE EXPANSION JOINT (VERMONT)" SHALL INCLUDE THE FABRICATION AND ERECTION OF THE COMPLETE JOINT ASSEMBLY INCLUDING ALL STEEL PLATES, BRACKETS, ANGLES, WELDED STUDS OR RODS, PREFORMED FABRIC DRAIN TROUGH MATERIAL, BUTYL RUBBER TAPE AND ANY OTHER MISCELLANEOUS MATERIAL NECESSARY TO INSTALL JOINT.
7. THE 4" x 8" x 1/2" ANGLES SHALL BE FURNISHED AS ONE CONTINUOUS PIECE. THE 1/4" x 5" BARS EACH SIDE OF THE JOINT SHALL BE PROVIDED IN TWO EQUAL LENGTHS.
8. COAT CONCRETE CONTACT SURFACES WITH EPOXY BONDING COMPOUND MEETING THE REQUIREMENTS OF SUBSECTION 719.02 OF THE STANDARD SPECIFICATIONS. PAYMENT SHALL BE INCLUDED IN THE UNIT PRICE BID FOR ITEM 516.10 "BRIDGE EXPANSION JOINT (VERMONT)".
9. FILL COUNTERBORED HOLES WITH HOT POURED JOINT SEALER AFTER BOLT INSTALLATION. PAYMENT FOR THE WORK SHALL BE INCIDENTAL TO ITEM 516.10.
10. PAYMENT FOR PVC WATERSTOP SHALL BE INCIDENTAL TO THE CONCRETE PAY ITEM.
11. A DRIP BEAD OF 1/4" x 7" STRIP OF PREFORMED MATERIAL SHALL BE CEMENTED TO THE BOTTOM OF THE FABRIC TROUGH USING AN ADHESIVE APPROVED BY THE MANUFACTURER. THE DRIP BEAD SHALL BE APPLIED 1" FROM THE DOWNSPOUT END OF THE TROUGH.
12. THE FABRIC TROUGH SHALL BE THOROUGHLY CLEANED AND FLUSHED AFTER THE PAVING OPERATION.
13. THE EXPANSION JOINT SHALL BE SHOP ASSEMBLED AND SHIPPED AS ONE UNIT.

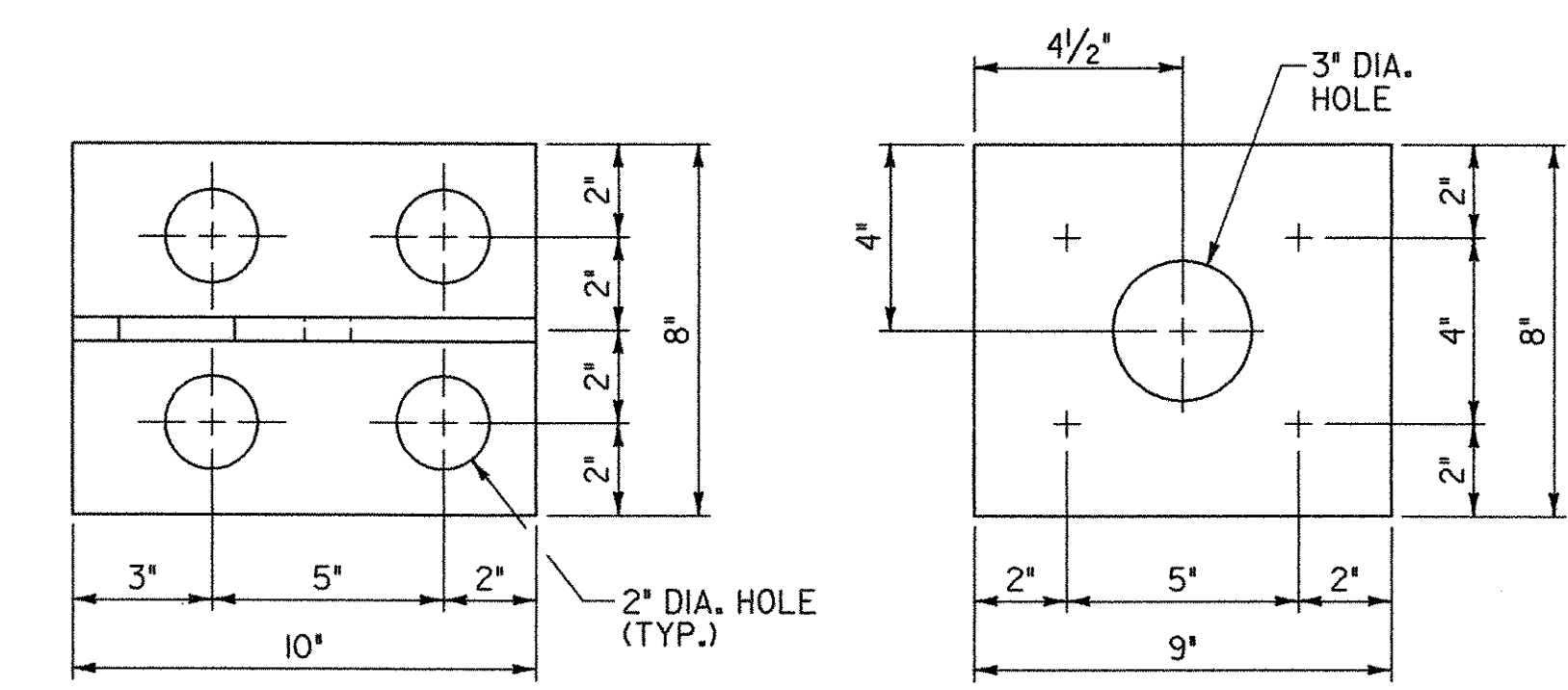


DETAIL "A"

NOT TO SCALE

TEMP	"A" DIST.
0° F	2"
15° F	1 1/8"
30° F	1 1/4"
45° F	1 1/2"
60° F	1 5/8"
75° F	1 3/4"
90° F	1"
105° F	1 1/8"

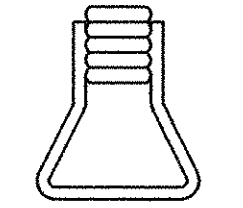
"A" IS THE SETTING BEFORE DEAD LOADS ARE IN PLACE.



PLAN

PLATE PLAN

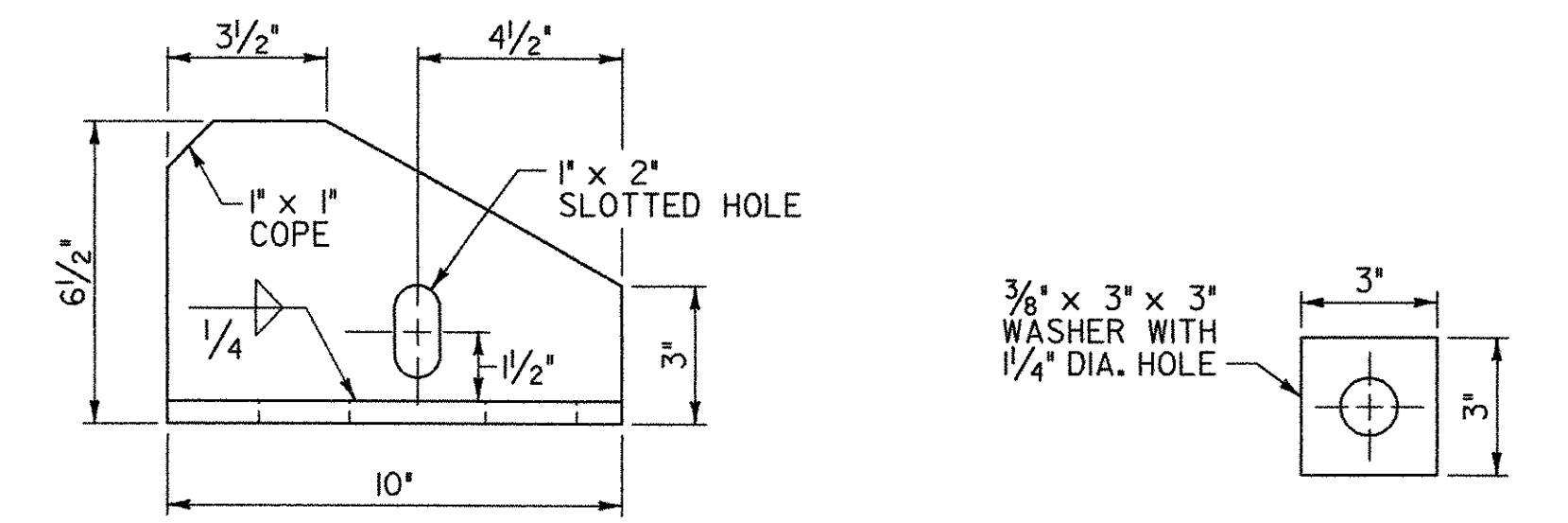
DAYTON/RICHMOND TYPE LF, 3/4" DIA. CLOSED FERRULE OR EQUIVALENT



NOTE: CLOSED THREADED FERRULE NUTS WITHOUT ANCHOR LOOPS MAY BE USED.

ANCHOR FERRULE DETAIL

NOT TO SCALE



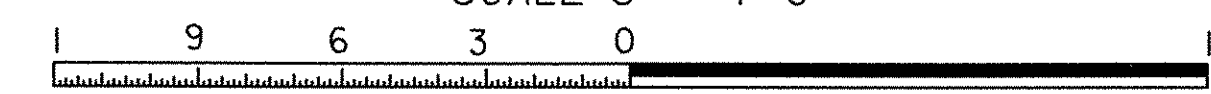
ELEVATION

WASHER FOR BRACKET

NOTE: ALL PLATES SHALL BE 1/2" THICK U.N.O.

BRACKET DETAILS

SCALE 3" = 1'-0"



STATE OF VERMONT
AGENCY OF TRANSPORTATION

Town Of	HUNTINGTON	Bridge No.	42
Highway No.	T.H. 4	Log Sta.	
		Surv. Sta.	
EAST STREET (T.H. #4) OVER HUNTINGTON RIVER			
EXPANSION JOINT DETAILS SHEET 2			
Designed By	S. BURBANK	Drawn By	S. BURBANK
Checked By	Date	Bridge Design Supervisor	Date
M. CHENETTE	08/05	M. CHENETTE	09/05
PROJECT	HUNTINGTON	PROJECT NO.	BRO 1445 (29)
DH Dgn.: ...Cadd\Trans\201302exp\j3.dgn		Plot Date: 11/2/2006	
Bridge Sheet No.		Sheet	39 of 63