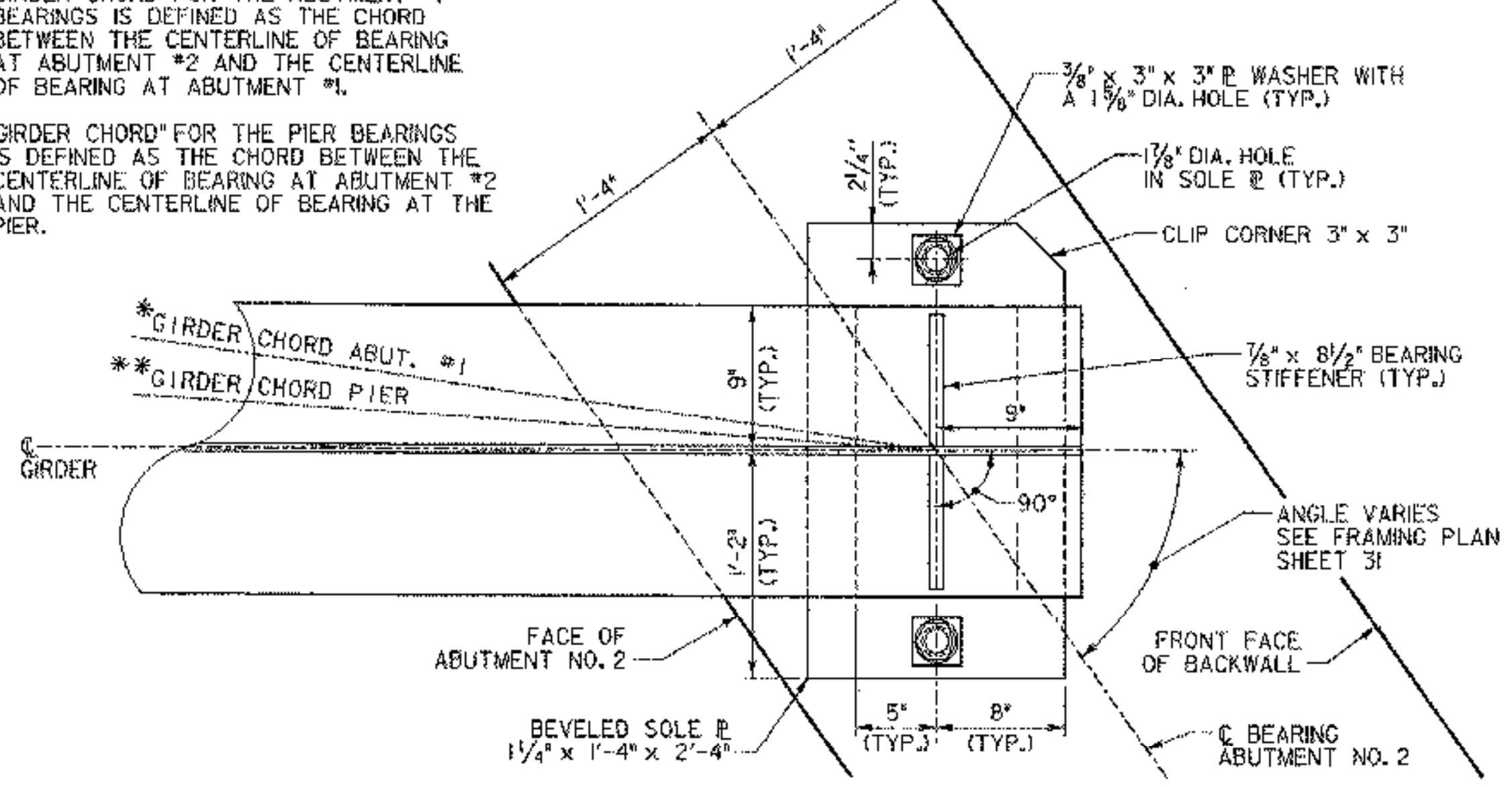
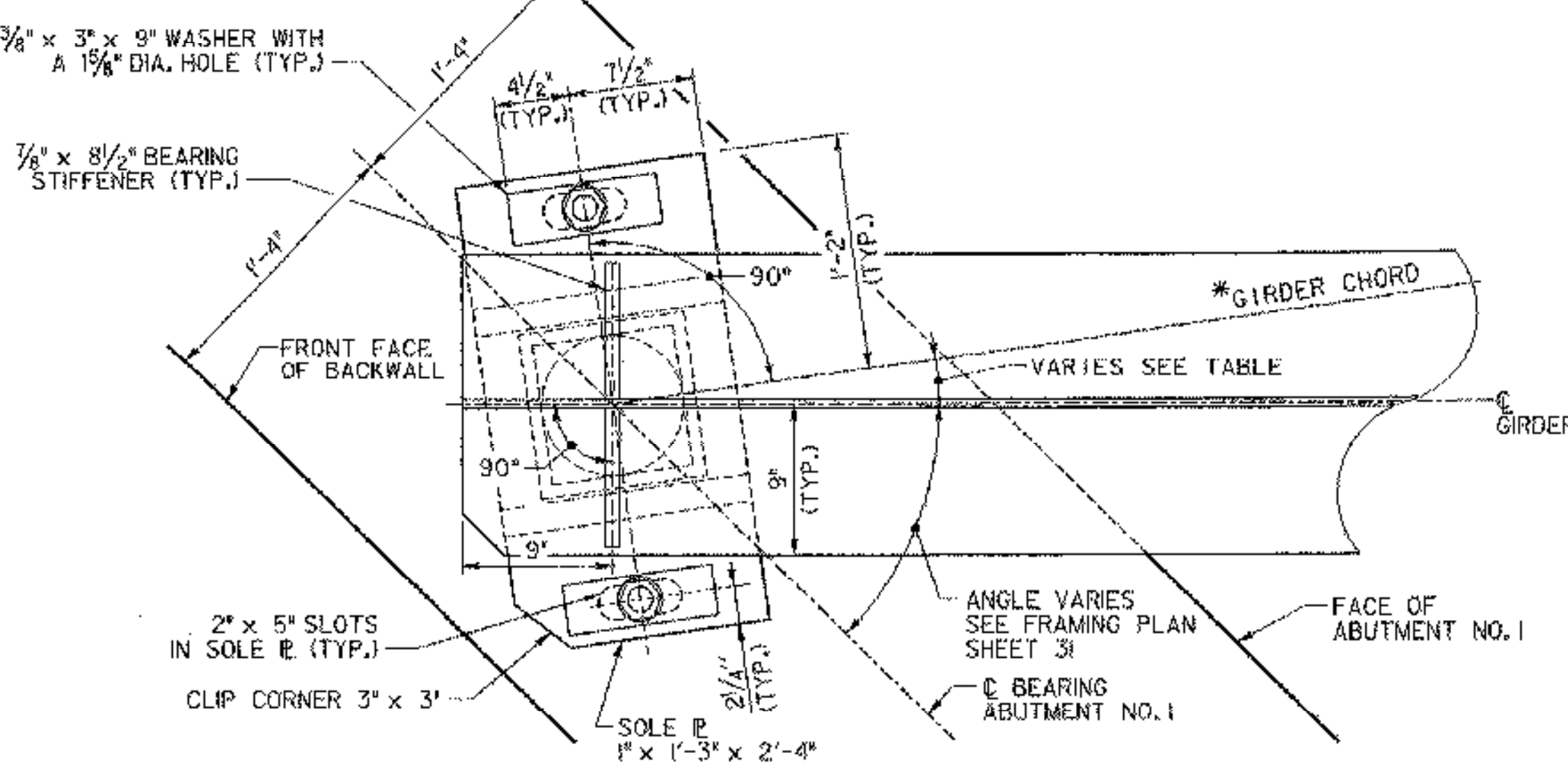


GIRDER CHORD ANGLE TABLE

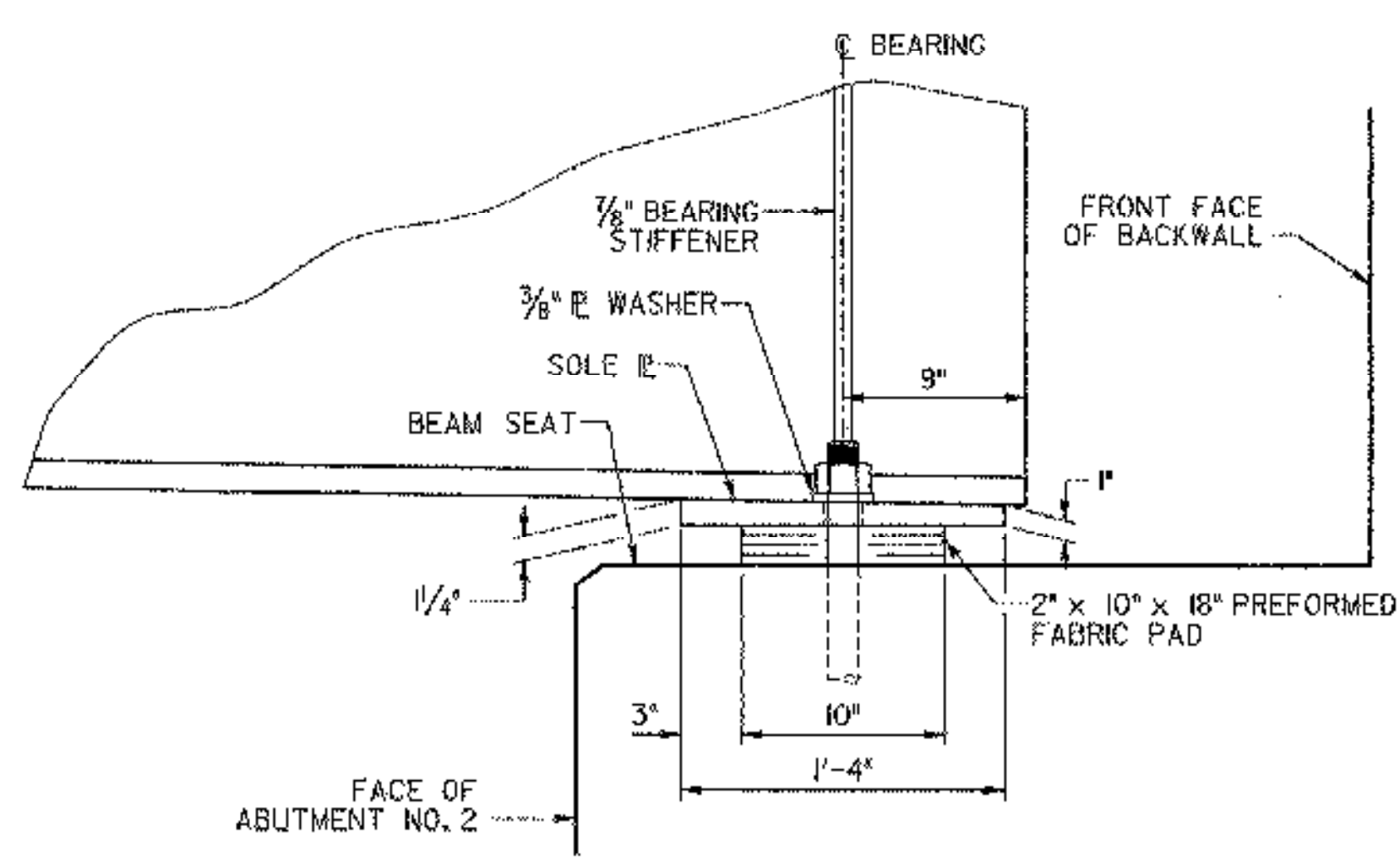
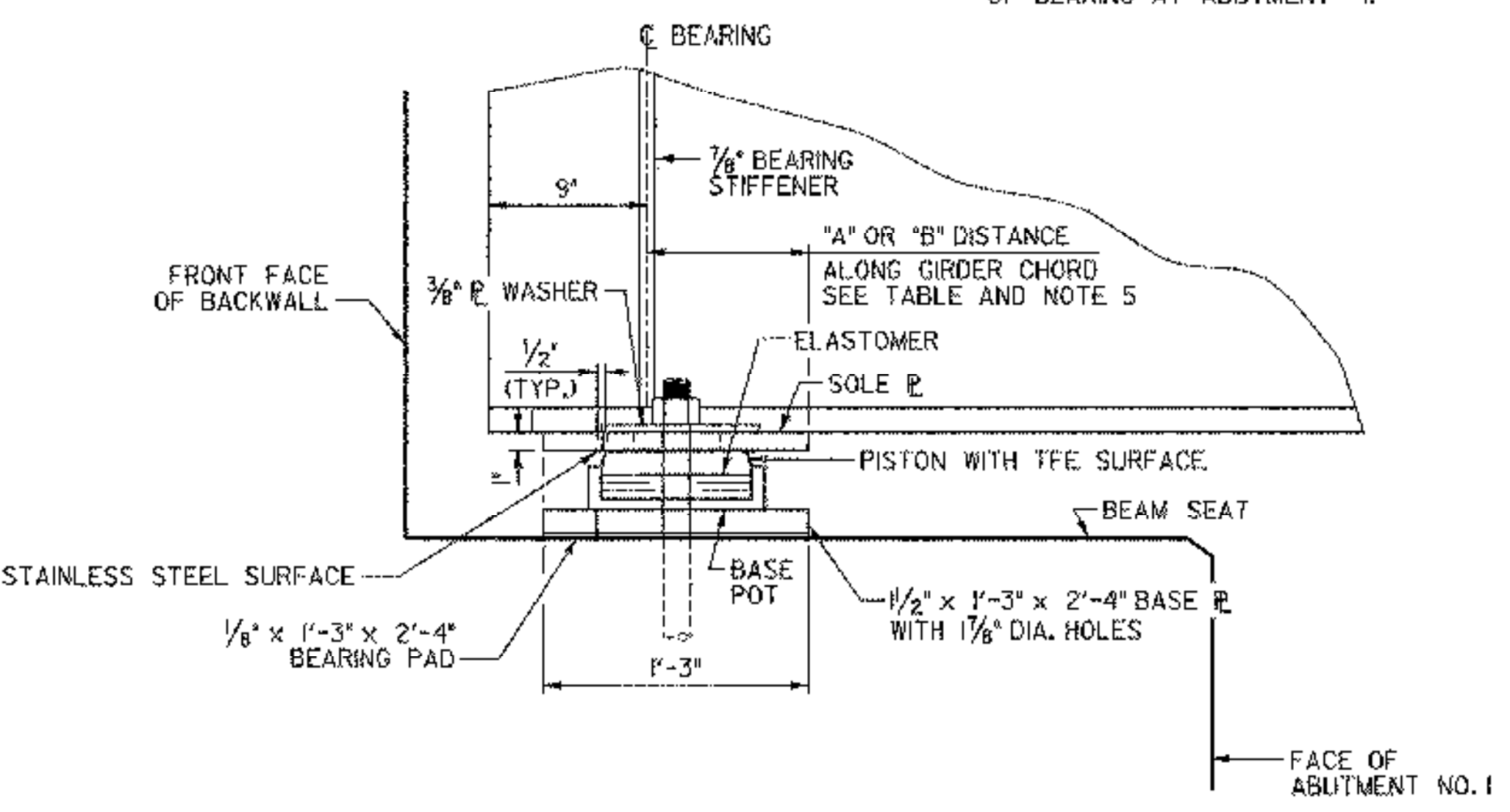
LOCATION	ANGLE BETWEEN GIRDER CHORD AND THE TANGENT AT C BRG. FOR ABUTMENT
GIRDER NO. 4	8° 12' 24"
GIRDER NO. 3	8° 05' 05"
GIRDER NO. 2	7° 58' 11"
GIRDER NO. 1	7° 51' 37"

1" PER TOM KNIGHT

* - "GIRDER CHORD" FOR THE ABUTMENT #1 BEARINGS IS DEFINED AS THE CHORD BETWEEN THE CENTERLINE OF BEARING AT ABUTMENT #2 AND THE CENTERLINE OF BEARING AT ABUTMENT #1.
 ** - "GIRDER CHORD" FOR THE PIER BEARINGS IS DEFINED AS THE CHORD BETWEEN THE CENTERLINE OF BEARING AT ABUTMENT #2 AND THE CENTERLINE OF BEARING AT THE PIER.



PLAN
 SCALE 1 1/2" = 1'-0"
 1 2 3 4



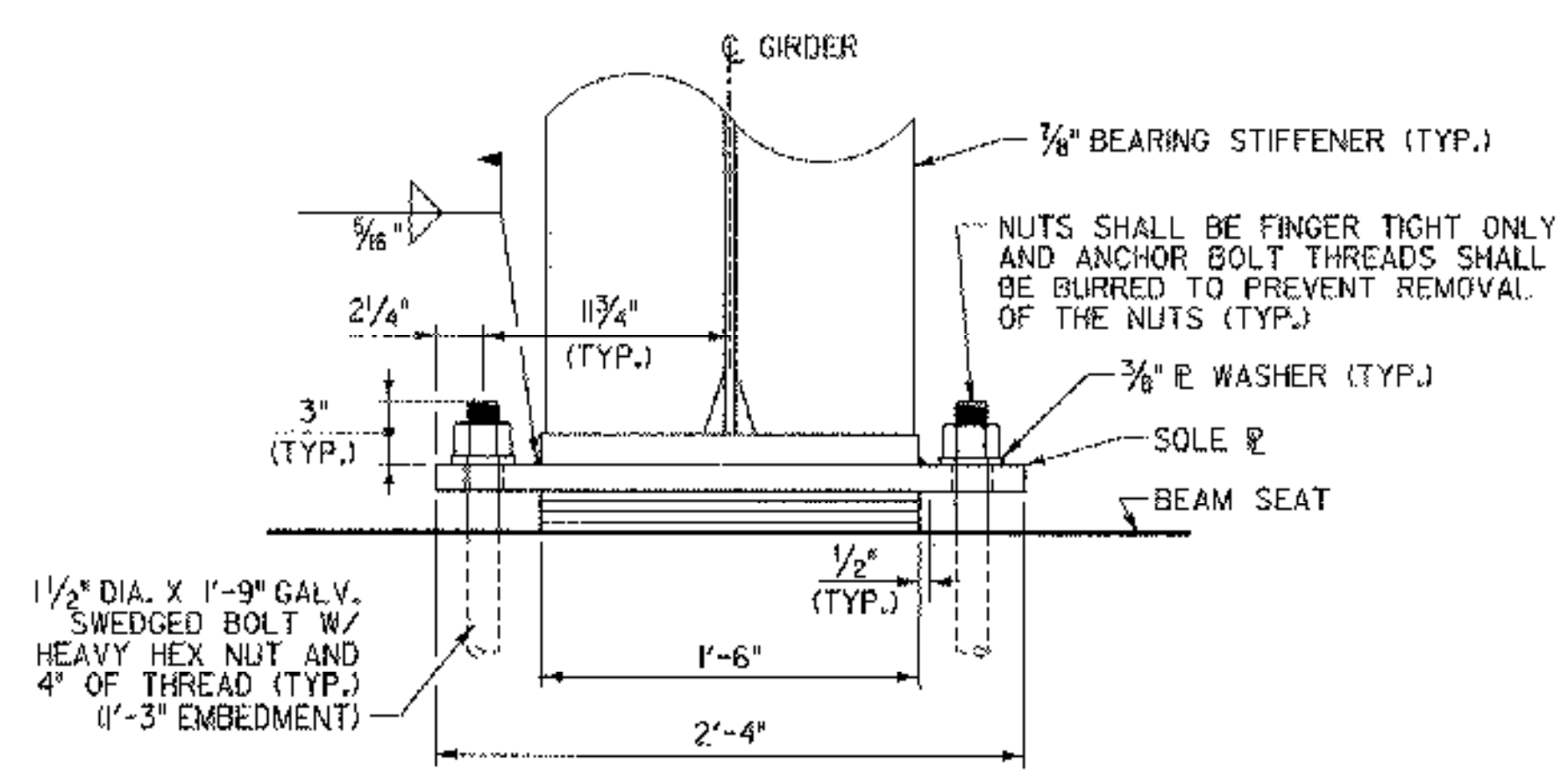
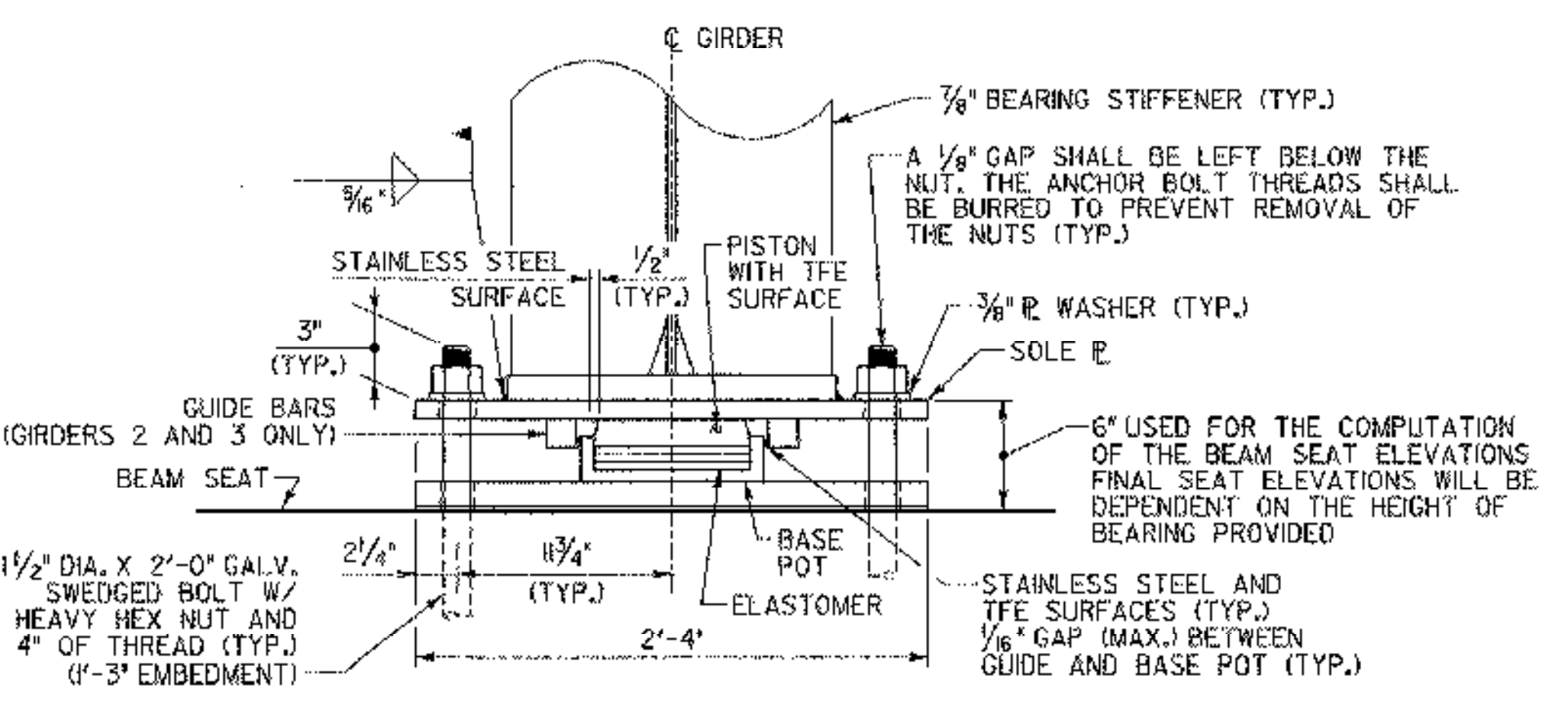
SIDE ELEVATION
 SCALE 1 1/2" = 1'-0"
 1 2 3 4

TEMPERATURE SETTING TABLE

TEMP.	"A" DIST.	"B" DIST.
0° F	8 5/16"	8 1/16"
15° F	8 7/16"	7 7/8"
30° F	8 1/4"	7 11/16"
45° F	8 1/16"	7 1/2"
60° F	7 7/8"	7 3/16"
75° F	7 11/16"	7 1/8"
90° F	7 1/2"	6 5/16"
105° F	7 5/16"	6 3/4"

SEE NOTE 5 ON SHEET 36

SEE SHEET 36 FOR BEARING NOTES



FRONT VIEW
 SCALE 1 1/2" = 1'-0"
 1 2 3 4

FIXED BEARING DETAILS @ ABUTMENT NO. 2

EXPANSION BEARING DETAILS @ ABUTMENT NO. 1

STATE OF VERMONT AGENCY OF TRANSPORTATION

Town Of	HUNTINGTON	Bridge No.	42
Highway No.	T.H. 4	Log Sta.	
		Surv. Sta.	
EAST STREET (T.H. #4) OVER HUNTINGTON RIVER			
ABUTMENT BEARING DETAILS			
Designed By	T. KNIGHT	Drawn By	S. BURBANK
Checked By	Date	Bridge Design Supervisor	
M. CHENETTE	08/05	M. CHENETTE	Date 09/05
PROJECT	HUNTINGTON	PROJECT NO.	BRO 1445 (29)
DH Dgn: ...Cadd\Trans\201302brge1.dgn	Plot Date: 01/31/2006	Bridge Sheet No.	Sheet 35 of 63