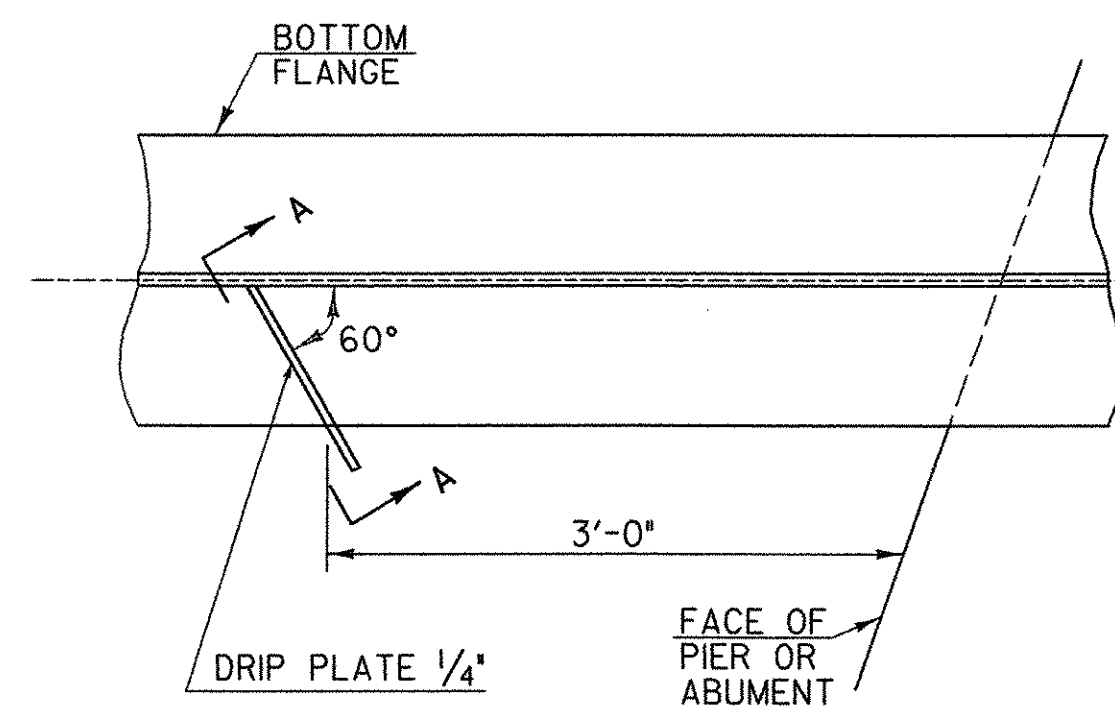
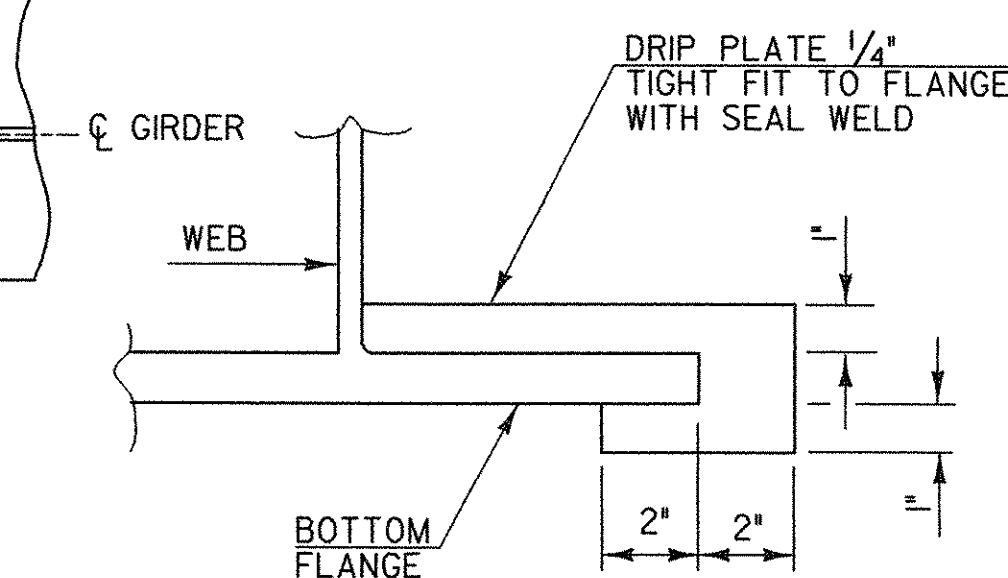


PLAN VIEW OF ABUTMENT No. 2 CROSSFRAME
(ABUTMENT No. 1 SIMILAR)

SCALE 1" = 1'-0"
1 9 6 3 0 2

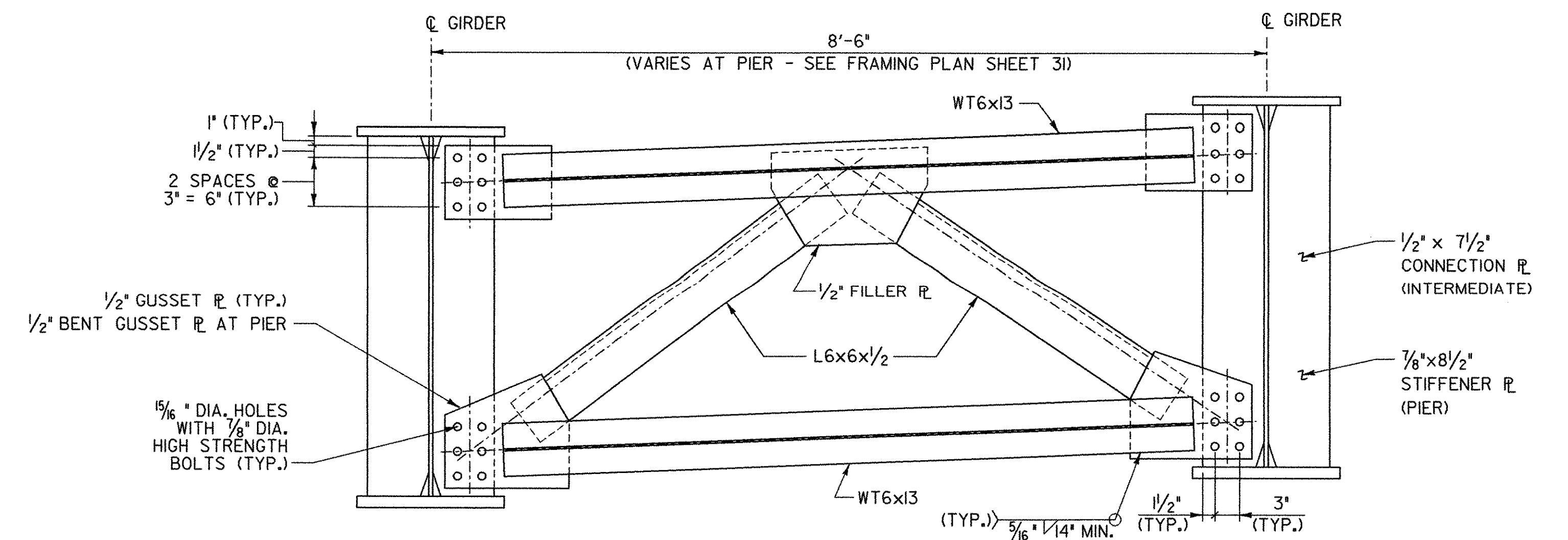


PLAN DRIP PLATE



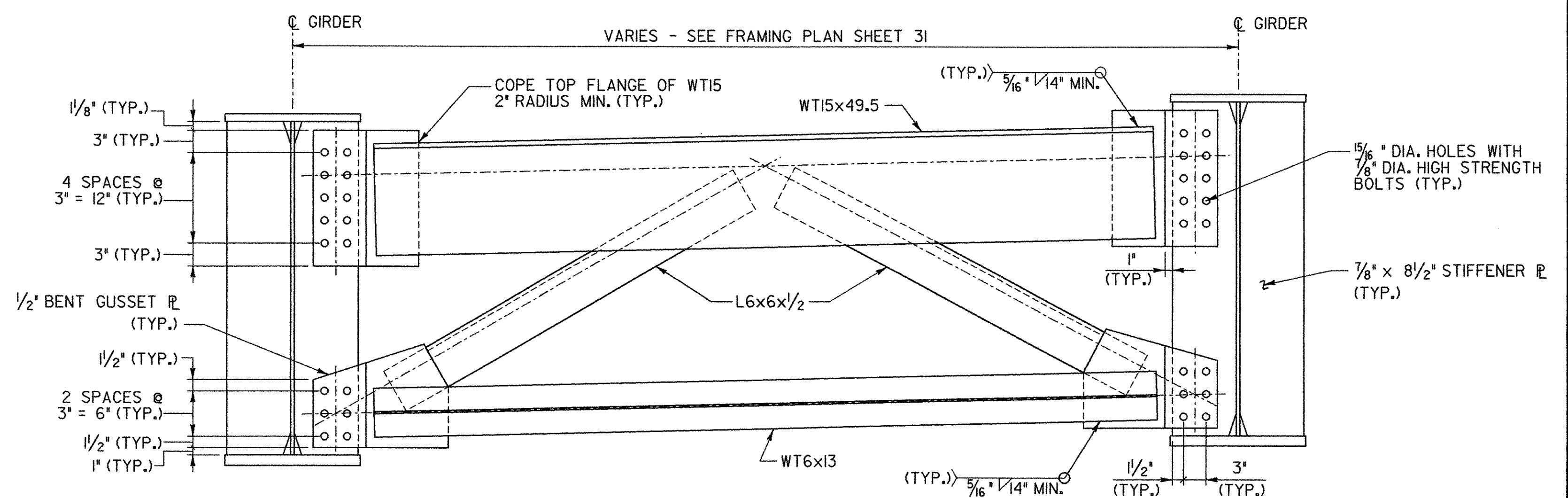
SECTION A-A

NOTE: DRIP PLATES SHALL BE PLACED ON OUTSIDE EDGE OF FASCIA GIRDERS ON THE HIGH SIDE OF ALL PIERS AND ABUTMENTS OR AS INDICATED ON PROJECT PLANS.



INTERMEDIATE AND PIER CROSSFRAME

SCALE 1" = 1'-0"
1 9 6 3 0 2



ABUTMENT CROSSFRAME

SCALE 1" = 1'-0"
1 9 6 3 0 2

**STATE OF VERMONT
AGENCY OF TRANSPORTATION**

Town Of	HUNTINGTON	Bridge No.	42
Highway No.	T.H. 4	Log Sta.	
		Surv. Sta.	

EAST STREET (T.H. #4) OVER HUNTINGTON RIVER

CROSSFRAME DETAILS

Designed By	G. BOGUE	Drawn By	J. SOTER
Checked By	S. BURBANK	Bridge Design Supervisor	M. CHENETTE
Date	06/05	Date	09/05

PROJECT	HUNTINGTON	PROJECT NO.	BRO 1445 (29)
---------	------------	-------------	---------------

DH Dgn: ...Cadd\Trans\201302xfdet.dgn Plot Date: 1/12/2006