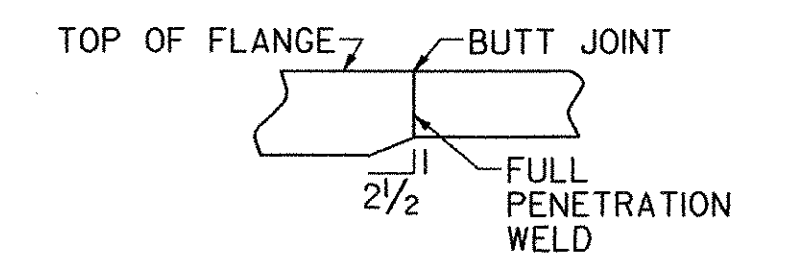


GIRDER ANGLE TABLE

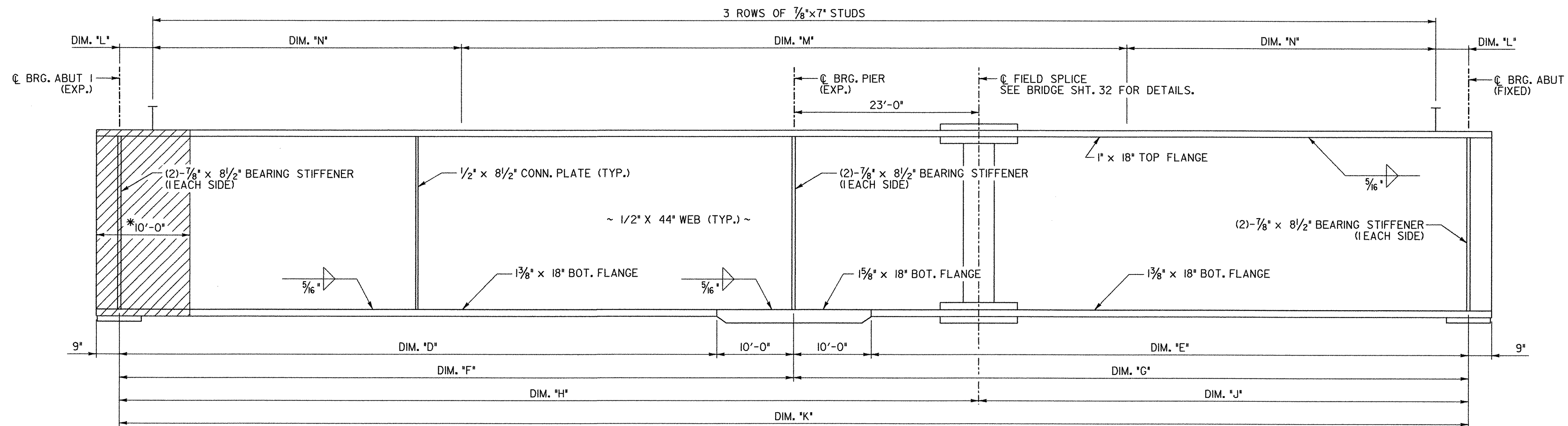
GIRDER NO.	ANGLE "A"	ANGLE "B"	ANGLE "C"
4	43° 29' 36"	45° 41' 05"	54° 00' 04"
3	44° 17' 06"	46° 25' 07"	54° 32' 56"
2	45° 02' 44"	47° 07' 31"	55° 04' 43"
1	45° 46' 36"	47° 48' 21"	55° 35' 30"



FLANGE TRANSITION DETAIL

NOTES:

- GIRDER DIMENSIONS ARE ALONG C. OF GIRDER.
- FOR CAMBER AND DEAD LOAD DEFLECTION DIAGRAMS, SEE SHEET 32.
- THE INTERMEDIATE CROSSFRAMES ARE PLACED ALONG LINES THAT ARE RADIAL TO THE CURVE.
- THE INTERMEDIATE CROSSFRAMES' SPACING NOT SHOWN ALONG GIRDERS 2 AND 3 ARE PROPORTIONAL TO THE SPACINGS GIVEN ALONG GIRDERS 1 AND 4.
- FOR CROSSFRAME DETAILS, SEE SHEET 33.
- THE ENDS OF GIRDERS SHALL BE VERTICAL UNDER DEAD LOAD.
- THE BEARING STIFFENERS SHALL BE PERPENDICULAR TO THE FLANGES AND WEB IN THE FINAL POSITION.
- CHARPY V-NOTCH TESTING REQUIRED ON ALL STRUCTURAL STEEL, EXCEPT IN THE DOWNSPOUTS.

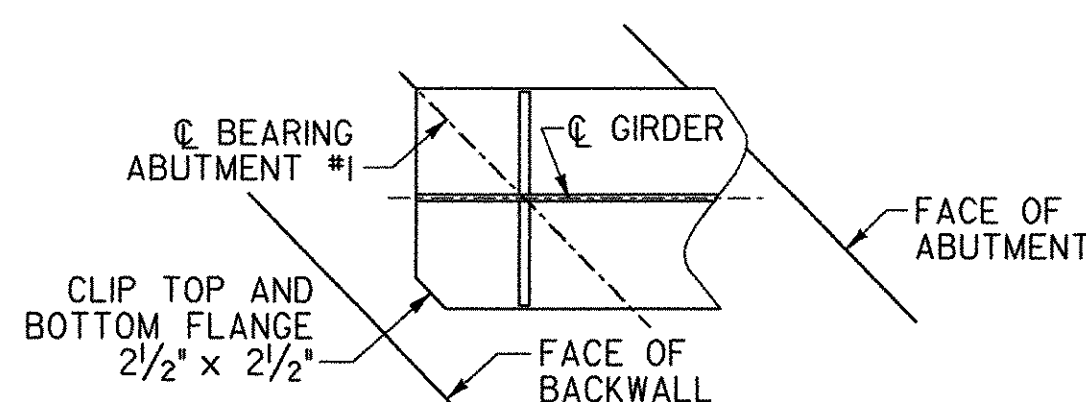


* - THE EXPANSION ENDS OF THE GIRDERS SHALL BE PAINTED AND GREASED SEE NOTE 27 ON SHEET 28

GIRDER ELEVATION

GIRDER DIMENSION TABLE

GIRDER NO.	RADIUS	DIM "D"	DIM "E"	DIM "F"	DIM "G"	DIM "H"	DIM "J"	DIM "K"	DIM "L"	DIM "M"	DIM "N"
4	635.229'	79'-9 1/4"	82'-2 7/16"	89'-9 1/4"	92'-2 7/16"	112'-9 1/4"	69'-2 7/16"	181'-11 1/16"	3 3/8" (-)	105 SPACES @ 9" = 78'-9"	56 SPACES @ 11" = 51'-4"
3	643.729'	80'-3 5/16"	81'-4 1/8"	90'-3 5/16"	91'-4 1/8"	113'-3 5/16"	68'-4 1/8"	181'-8 1/16"	1 1/2" (+)	105 SPACES @ 9" = 78'-9"	56 SPACES @ 11" = 51'-4"
2	652.229'	80'-10 7/8"	80'-6 7/16"	90'-10 7/8"	90'-6 7/16"	113'-10 7/8"	67'-6 7/16"	181'-5 5/16"	4 5/8" (+)	104 SPACES @ 9" = 78'-0"	56 SPACES @ 11" = 51'-4"
1	660.729'	81'-6 1/16"	79'-9 9/16"	91'-6 1/16"	89'-9 9/16"	114'-6 1/16"	66'-9 9/16"	181'-3 1/2"	3 3/4" (+)	104 SPACES @ 9" = 78'-0"	56 SPACES @ 11" = 51'-4"



FLANGE COPING DETAIL

STATE OF VERMONT AGENCY OF TRANSPORTATION

Town Of	HUNTINGTON	Bridge No.	42
Highway No.	T.H. 4	Log Sta.	
		Surv. Sta.	
EAST STREET (T.H. #4) OVER HUNTINGTON RIVER			
FRAMING PLAN			
Designed By	G. BOGUE	Drawn By	T. KNIGHT
Checked By	Date	Bridge Design Supervisor	
S. BURBANK	03/06	M. CHENETTE	Date 03/06
PROJECT	HUNTINGTON	PROJECT NO.	BRO 1445 (29)
DH Dgn.: ...Cadd\Trans\201302\fra.dgn		Plot Date:	3/28/2006
Bridge Sheet No.		Sheet	31 of 63