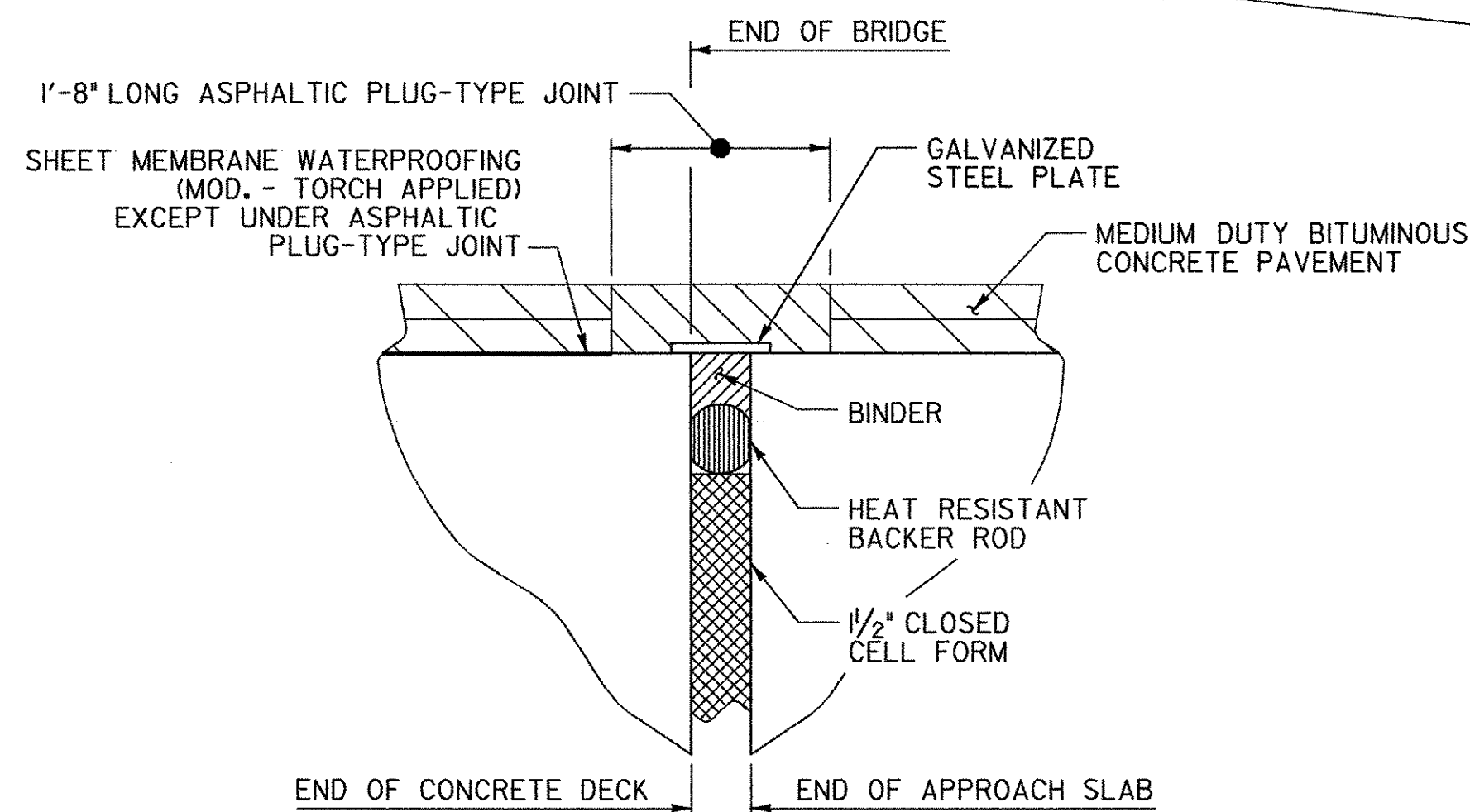
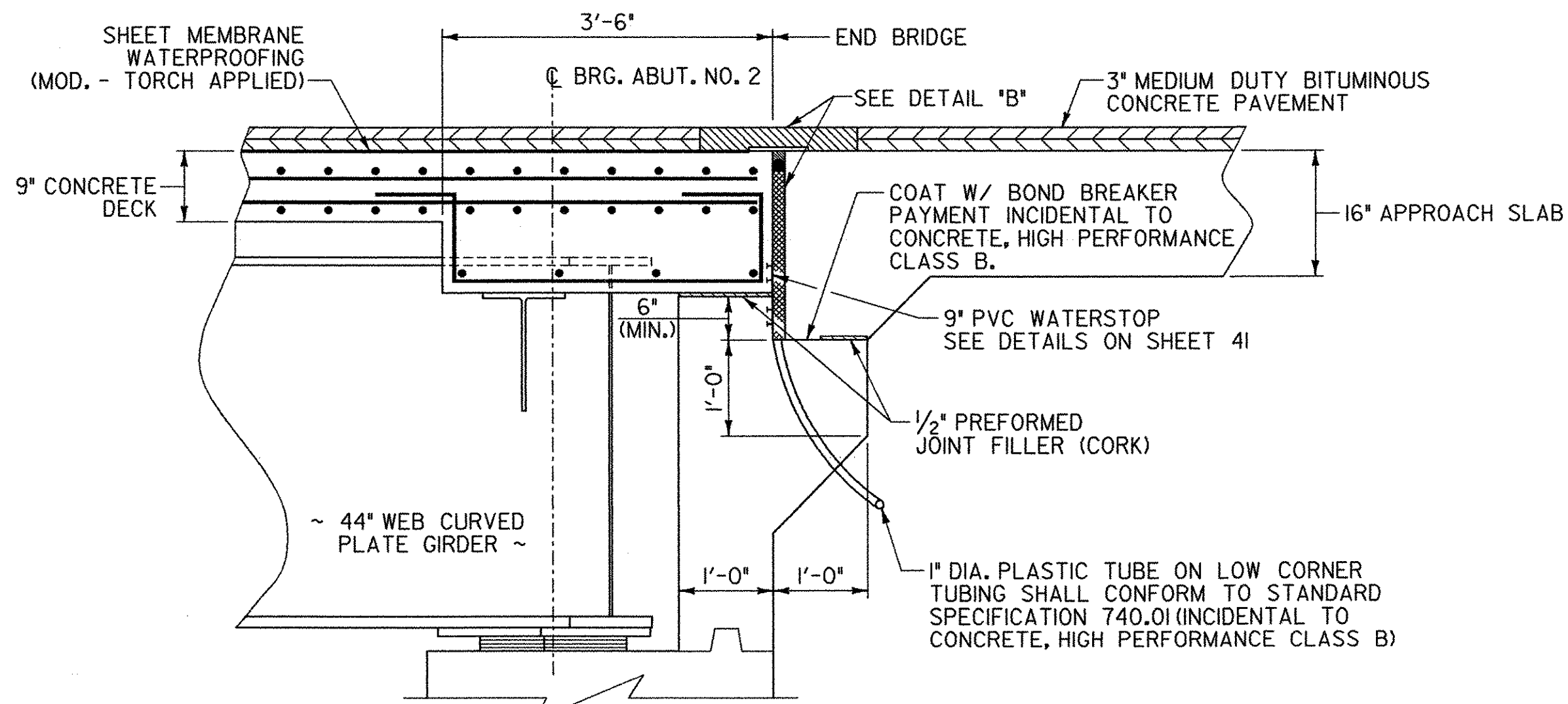


**DECK REINFORCING PLAN**

SCALE 1/8" = 1'-0"  
 10 2 4 6 8

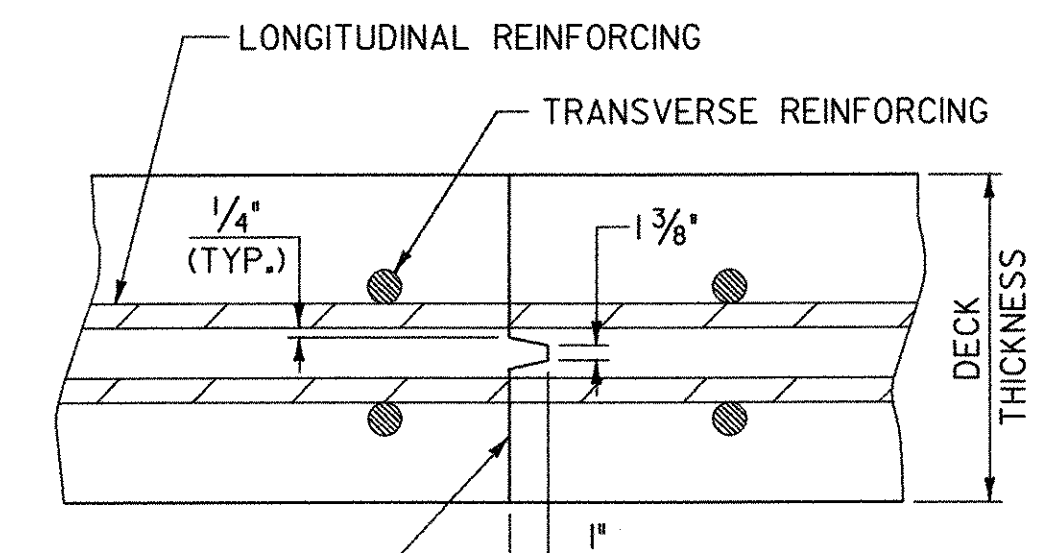


**DETAIL "B"**  
 NOT TO SCALE



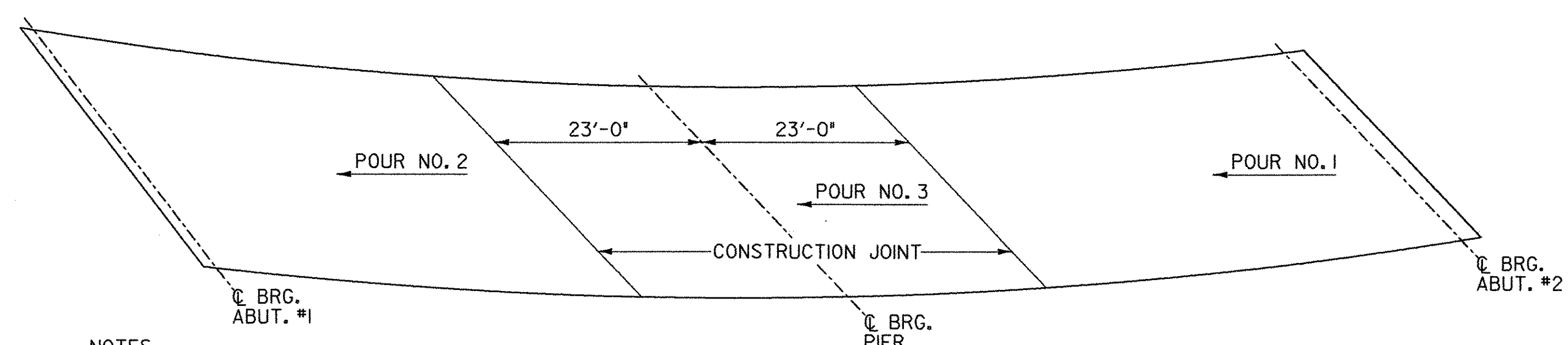
**SECTION A-A**

SCALE 3/4" = 1'-0"  
 0 2



APPLY EPOXY BONDING COMPOUND BEFORE PLACING NEW CONCRETE, INCLUDE WITH COST BID FOR CONCRETE, HIGH PERFORMANCE CLASS A

**TRANSVERSE BRIDGE SLAB CONSTRUCTION JOINT DETAILS**  
 NOT TO SCALE



**NOTES:**

1. THE ARROWS INDICATE THE DIRECTION OF THE CONCRETE PLACEMENT.
2. THE CONCRETE SHALL BE DEPOSITED PARALLEL TO THE CENTERLINE OF BEARING SO AS TO LOAD THE GIRDERS EQUALLY.
3. TRANSVERSE BRIDGE SLAB CONSTRUCTION JOINTS, AS SHOWN ON THIS SHEET, SHALL BE USED BETWEEN ADJACENT DECK POURS.
4. IF APPROVED BY THE ENGINEER, POURS NO. 1 AND NO. 2 MAY BE POURED THE SAME DAY PROVIDED THAT THE MAXIMUM TIME SPAN OF THE POURS IS EIGHT HOURS, THE INDICATED POURING SEQUENCE SHALL BE FOLLOWED AND A RETARDING ADMIXTURE USED SO THAT THE DECK CONCRETE WILL NOT SET UP UNTIL ALL THE CONCRETE HAS BEEN POURED. THE RETARDING ADMIXTURE SHALL BE INCIDENTAL TO ITEM 501.33, CONCRETE HIGH PERFORMANCE CLASS A.
5. A NINETY-SIX (96) HOUR DELAY BETWEEN THE COMPLETION OF ONE DAY'S POUR AND THE BEGINNING OF ANY OTHER POUR SHALL BE OBSERVED.
6. THE CONTRACTOR MAY SUBMIT, IN WRITING, AN ALTERNATE POUR SEQUENCE TO THE ENGINEER FOR REVIEW.

**DECK POUR SEQUENCE**

NOT TO SCALE

**STATE OF VERMONT AGENCY OF TRANSPORTATION**

Town Of	HUNTINGTON	Bridge No.	42
Highway No.	T.H. 4	Log Sta.	
		Surv. Sta.	

EAST STREET (T.H. #4) OVER HUNTINGTON RIVER

**DECK REINFORCING PLAN**

Designed By	S. BURBANK	Drawn By	S. BURBANK
Checked By	T. KNIGHT	Date	08/05
		Bridge Design Supervisor	M. CHENETTE
		Date	09/05

PROJECT	HUNTINGTON	PROJECT NO.	BRO 1445 (29)
---------	------------	-------------	---------------

DH Dgn: ... \Cadd\Trans\201302deck.dgn Plot Date: 03/30/2006

Bridge Sheet No. Sheet 30 of 63

